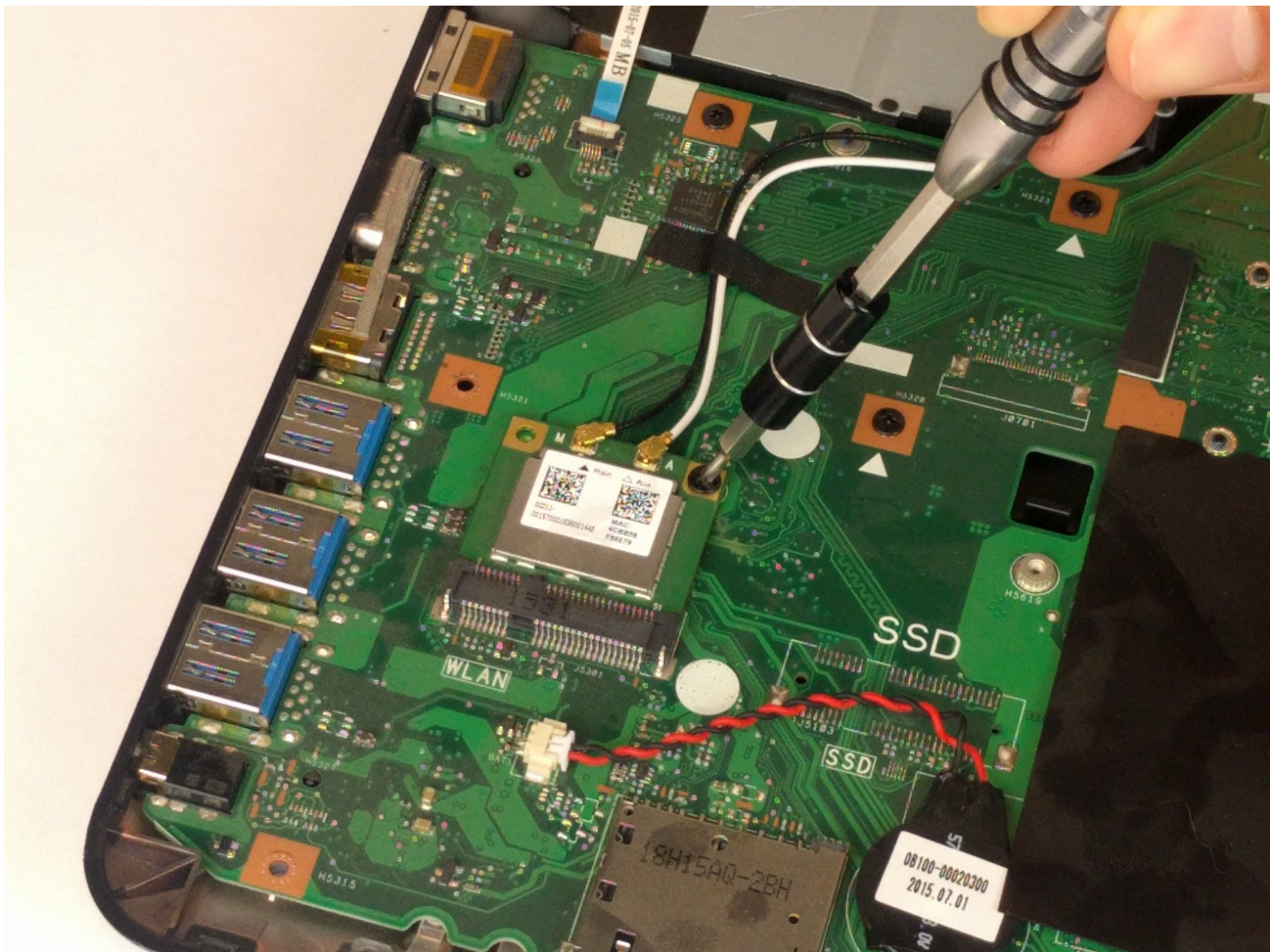




Asus X751L Wireless Card Replacement

This guide will assist you in replacing the wireless card in your ASUS X751L.

Written By: Matthew Martin



INTRODUCTION

This guide will assist you in replacing a faulty wireless card in your ASUS X751L.



TOOLS:

- [iFixit Opening Tools](#) (1)
 - [Phillips #00 Screwdriver](#) (1)
-

Step 1 — Keyboard



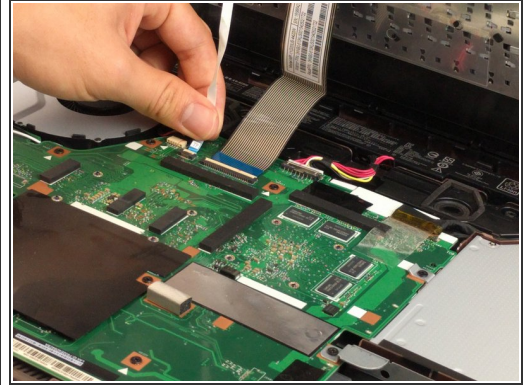
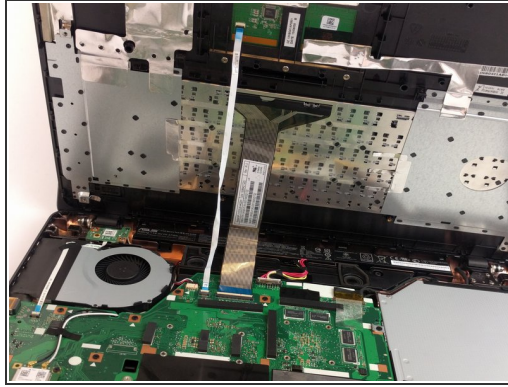
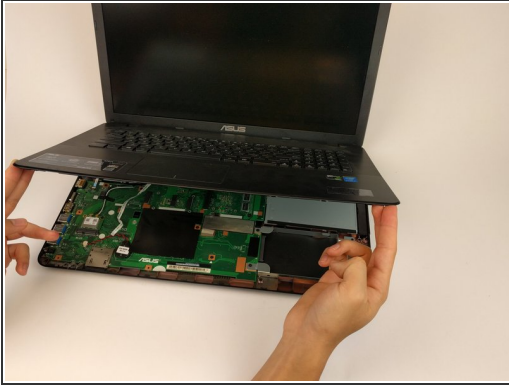
- With the screen closed, place your laptop upside-down with the front facing you.
- Remove the six 14.6mm Phillips #00 screws.
- Remove the four 6.6mm Phillips #00 screws.

Step 2



- Flip the laptop over and open the lid.
 - Pry around the edges of the laptop base using the plastic opening tool.
- ⚠ Prying too hard can break the plastic clips.

Step 3



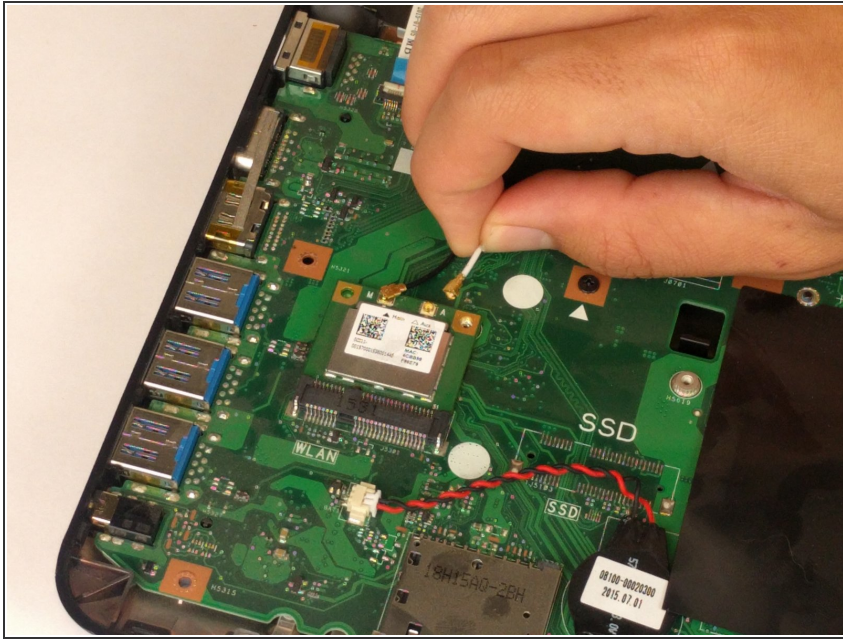
- Carefully lift the keyboard up.
 - ⚠ Be very careful when lifting the keyboard up. Two zero insertion force (ZIF) cables are between the keyboard assembly and the motherboard. Do not lift the assembly too high.
- Disconnect the two ZIF connectors from the motherboard using your fingernail to lift the cream-colored tab.

Step 4 — Wireless Card



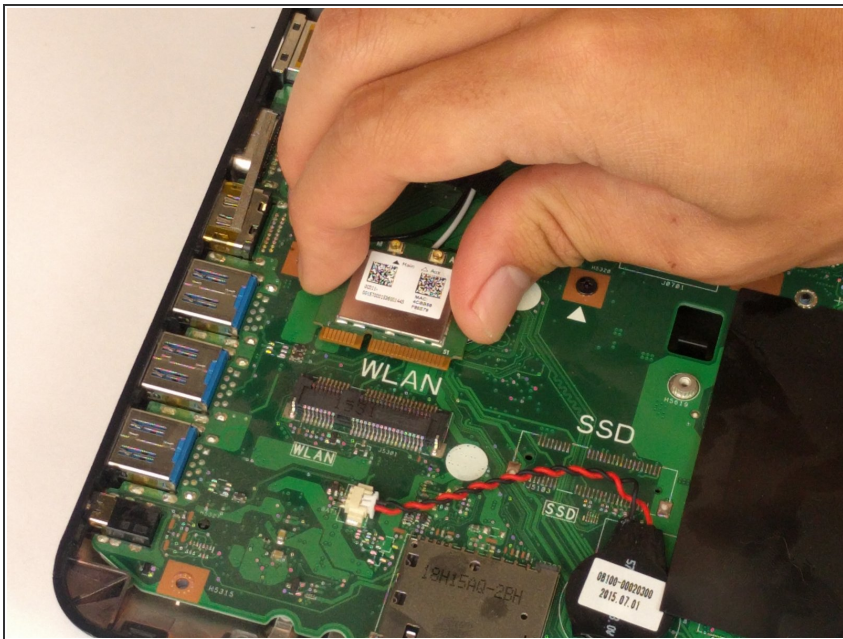
- Remove the single 4.7mm PH00 screw holding the wireless card to the motherboard.


Step 5



- Using your fingers, lightly lift up on the black and white antenna cords.

Step 6



- With your fingers lightly pull the wireless card out of the slot.
 Make sure to keep the card parallel with the motherboard when removing from the slot.

To reassemble your device, follow these instructions in reverse order.