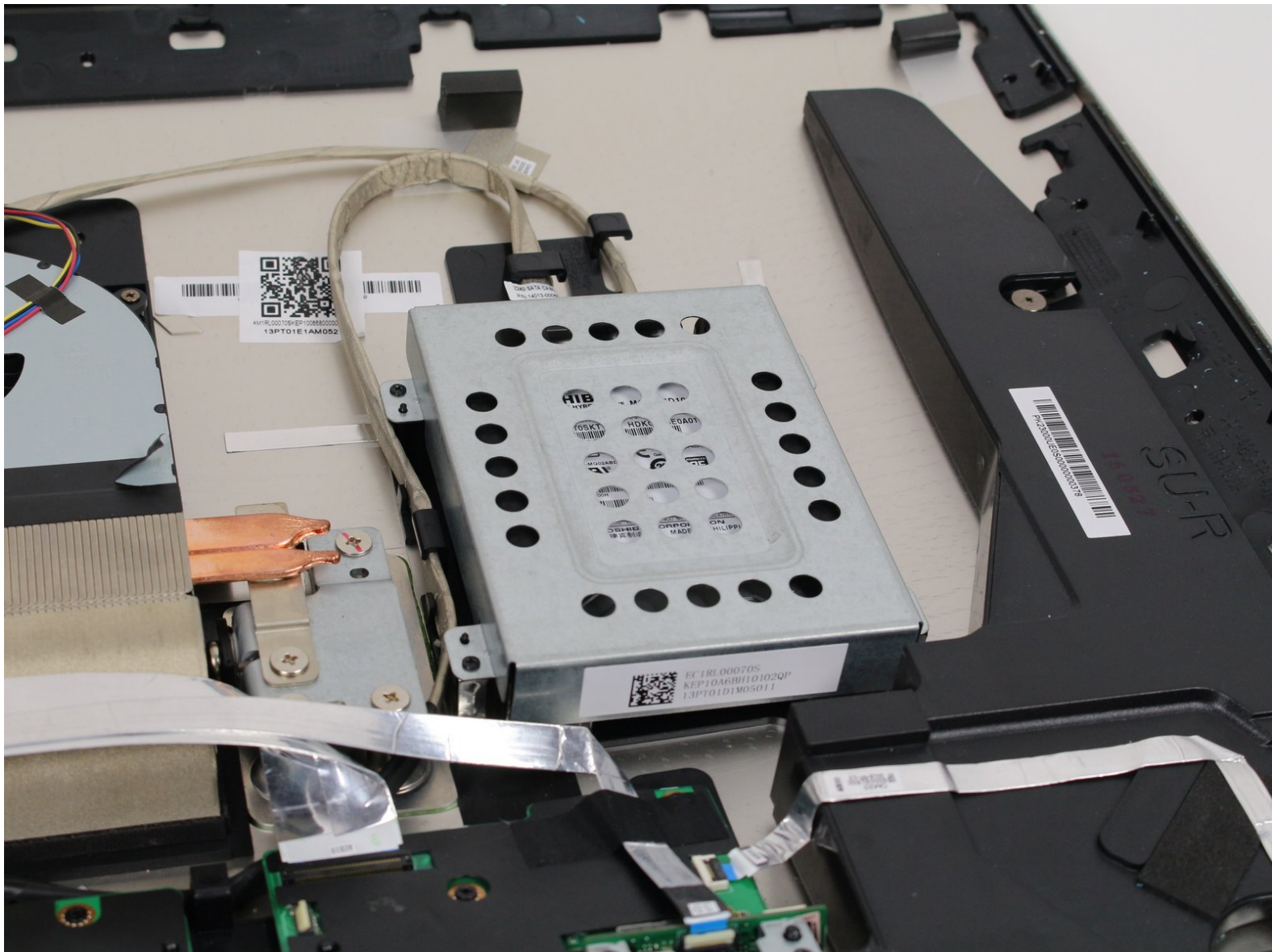




# Asus Zen AiO Pro Z240IC Hard Drive Replacement

This guide will show you how to replace the hard drive on your Asus Zen AiO Pro Z240IC to increase total memory storage and improve boot times.

Written By: Anthony Muench



# INTRODUCTION

This guide will show you how to replace the hard drive on your Asus Zen AiO Pro Z240IC to increase total memory storage and improve boot times.



## TOOLS:

- [Phillips #0 Screwdriver](#) (1)
- [Phillips #1 Screwdriver](#) (1)
- [iFixit Opening Tools](#) (1)



## PARTS:

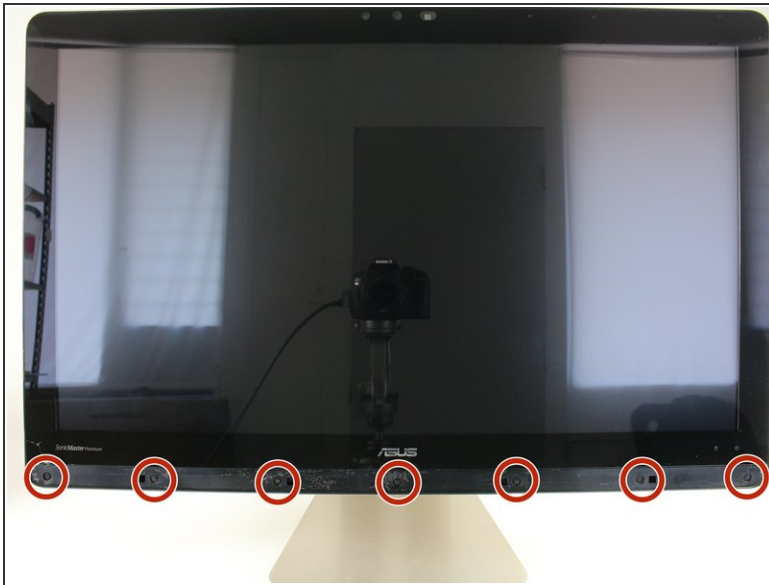
- [1 TB SSD / Upgrade Bundle](#) (1)
- [250 GB SSD / Upgrade Bundle](#) (1)
- [500 GB SSD / Upgrade Bundle](#) (1)
- [2 TB SSD / Upgrade Bundle](#) (1)

## Step 1 — Screen



- Use the plastic opening tool to pry off the black plastic strip at the bottom of the screen by wiggling the tool between the strip and the screen.
- ⓘ The strip is held in place with adhesive. You may hear a crackling sound as the strip is peeled off.
- Run the opening tool slowly along the base of the screen, peeling the black strip back, until the opposite end of the screen is reached.



## Step 2



- Use a Phillips #1 screwdriver to remove the seven (7) 4.8 mm screws from the base of the screen.

### Step 3



- Place the computer on its back, facing up.
  - Wedge the plastic opening tool in between the screen and the bezel of the aluminum computer casing.
  - Move the tool along the entire edge of the screen with an up-and-down prying motion to loosen the screen from the casing. Do not lift the entire screen away from the computer yet.
-  The screen is held in place by plastic tabs. These will create a popping sound when loosened.
-  The screen assembly will flex as it is pried off. Do not bend the screen too far or the glass screen could shatter.

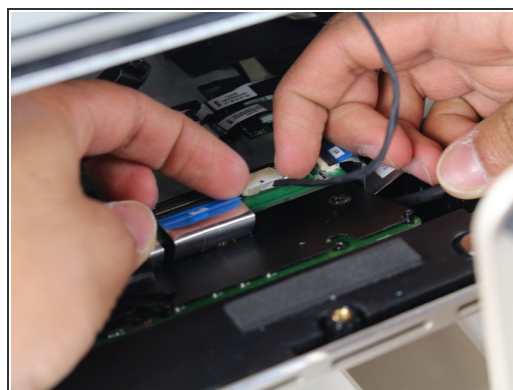
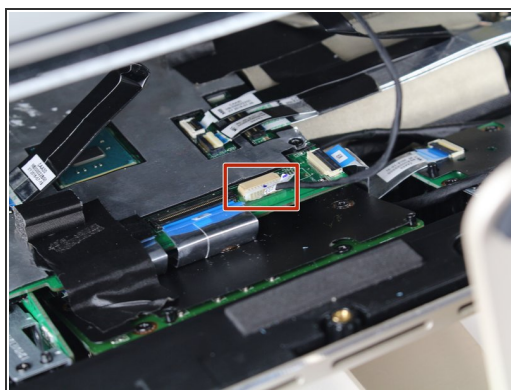
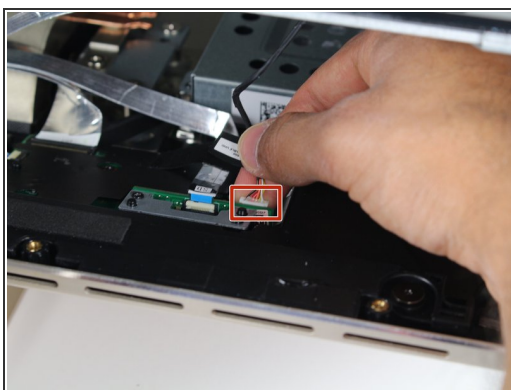


## Step 4



- Lift the screen from the bottom edge by about 6 inches. Prop it open with one hand.
- Look inside the computer and locate five (5) cables that connect the embedded components of the screen (camera, microphone, etc.) to the rest of the computer.

## Step 5



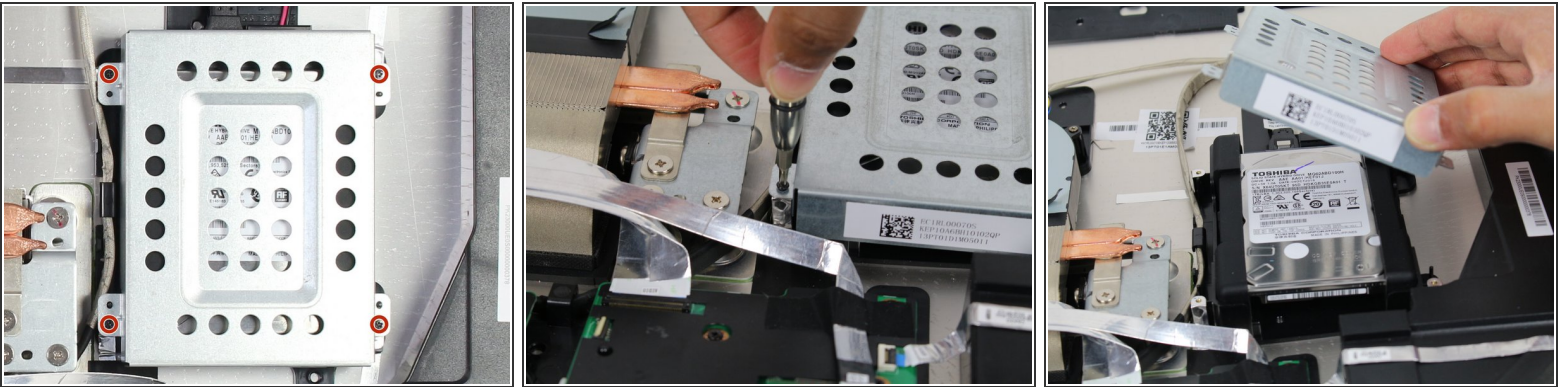
- Remove the two (2) cables that are connected to the computer by white, rectangular terminal blocks by pulling straight out on the plug.
- ⓘ The cables and wires in these steps are delicate; do not tug on the individual wires that make up each cable.

## Step 6



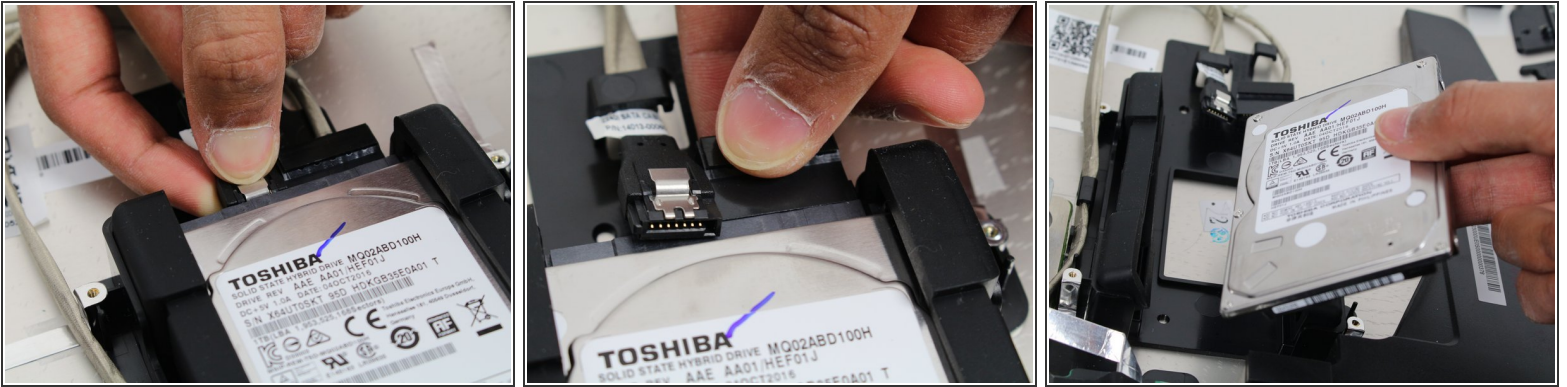
- Use a finger to lift the plastic locking flaps that hold the remaining three (3) ribbon cables in place.
- Remove the cables from their terminals by slipping them away from their connectors.
- ☑ The black line on the ribbon cables mark the connecting region. When reinstalling, insert the cable up to the this line so the locking flap covers it.

## Step 7 — Hard Drive



- Use a Phillips #0 to remove the four (4) 3.2 mm screws on the metal casing enclosing the hard drive.
- Remove the metal casing by lifting it up.

## Step 8



- Remove the SATA cable by pushing down on the metal tab and pulling the cable away from the drive.
- Remove the power cable by pinching the black connector and pulling the cable out.
- Take out the drive by lifting it out of its rubber seat.

To reassemble your device, follow these instructions in reverse order.