



# Asus ZenBook UX330U Wi-Fi Adapter Replacement

This guide can be used to remove the Wi-Fi adapter for your Asus ZenBook UX330U or UX330UA.

Written By: Hasan Akpunar



## INTRODUCTION

If your Asus ZenBook UX330U or UX330UA cannot connect to Wi-Fi, then you may need to replace your Wi-Fi adapter. Before using this guide, look at the troubleshooting page located [here](#) for possible fixes that do not require any disassembly. This guide can be used to remove the Wi-Fi adapter for the ASUS ZenBook UX330U or UX330UA.

Before beginning any device disassembly, please power off and unplug your device.



### TOOLS:

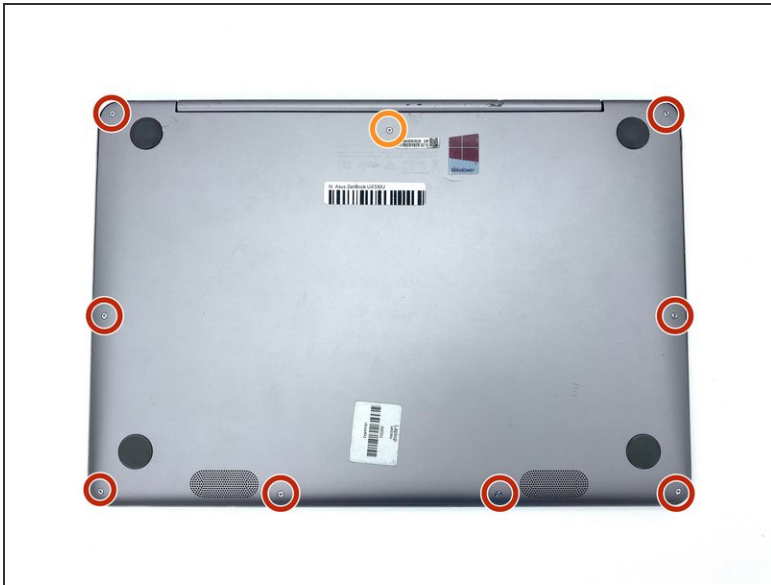
- [T5 Torx Screwdriver](#) (1)
  - [Phillips #0 Screwdriver](#) (1)
  - [Anti-Static Wrist Strap](#) (1)
  - [Jimmy](#) (1)
  - [ESD Safe Tweezers Blunt Nose](#) (1)
  - [Suction Handle](#) (1)
-


## Step 1 — Battery



- Before starting any device disassembly, please put on the anti-static bracelet provided by iFixit. Make sure the metal part of the bracelet is touching your skin.
  - Remove the alligator clip at the end of the bracelet by simply pulling it off, to reveal the bullet connector.
  - Insert the bullet connector into the ground port of an outlet.
- i** Make sure to keep the bracelet on at all times while disassembling your device, or you may risk causing a short in one of the components.

## Step 2



 Power off the device and make sure it is physically unplugged before starting any disassembly procedures.

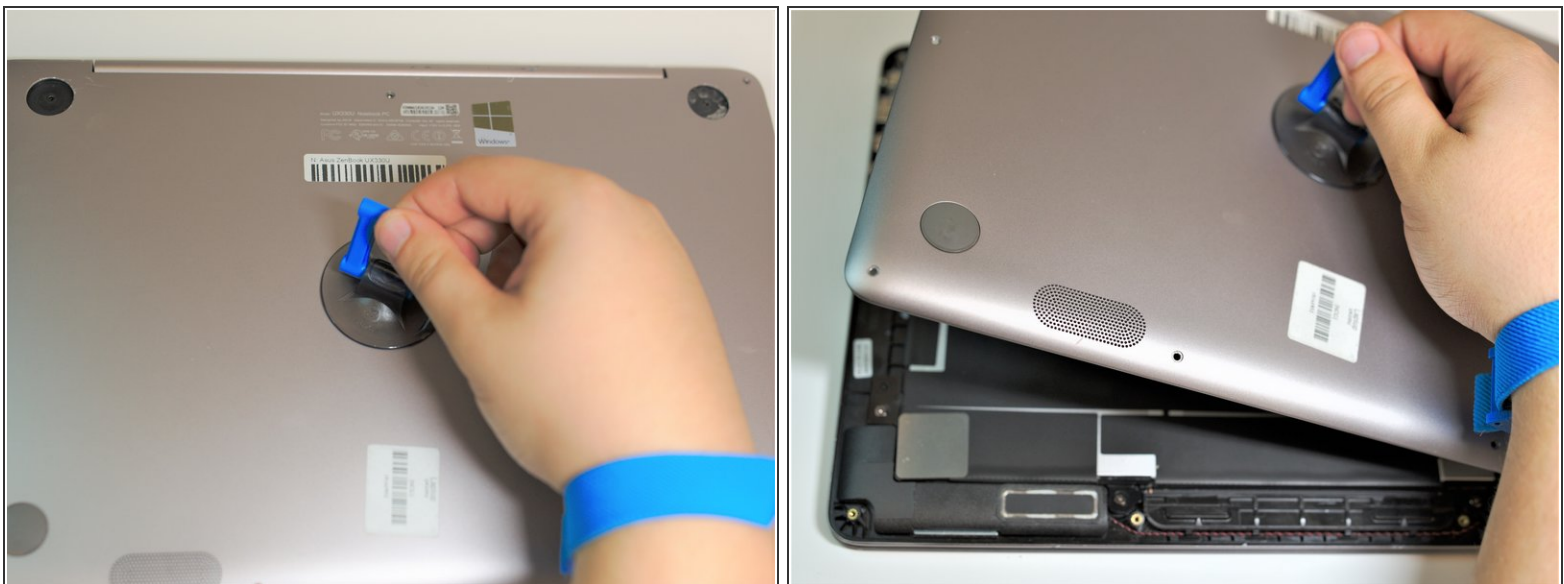
- Remove the eight 3.1mm screws using the T5 Torx screwdriver bit.
- Remove the longer 5.1mm screw using the T5 Torx screwdriver bit.

### Step 3



- Pry off the rubber feet that are closest to the hinge using the jimmy.
  - Unscrew the two 5.6mm screws that were underneath the rubber feet using the Philips #0 screwdriver bit.
- i** The rubber feet may be difficult to remove. Do not hesitate to use more force to remove the feet, if necessary.

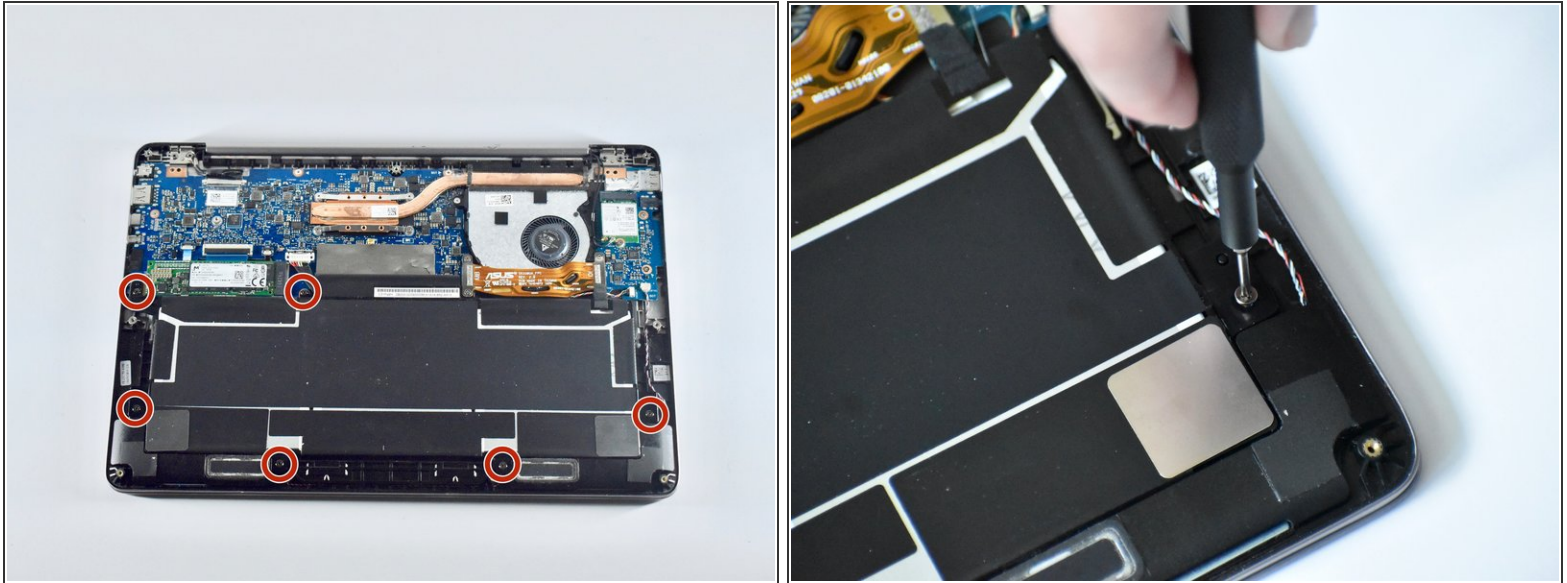
### Step 4



- Press the suction handle on the center of the back cover, and gently lift up.
- !** You may need to wiggle the back cover as you lift it in order to take it off easily.



## Step 5



- Unscrew the six 3.7mm screws using the Philips #0 screwdriver bit.

⚠ Be extra cautious when handling the battery. If the battery looks swollen or damaged, consult [this guide](#).

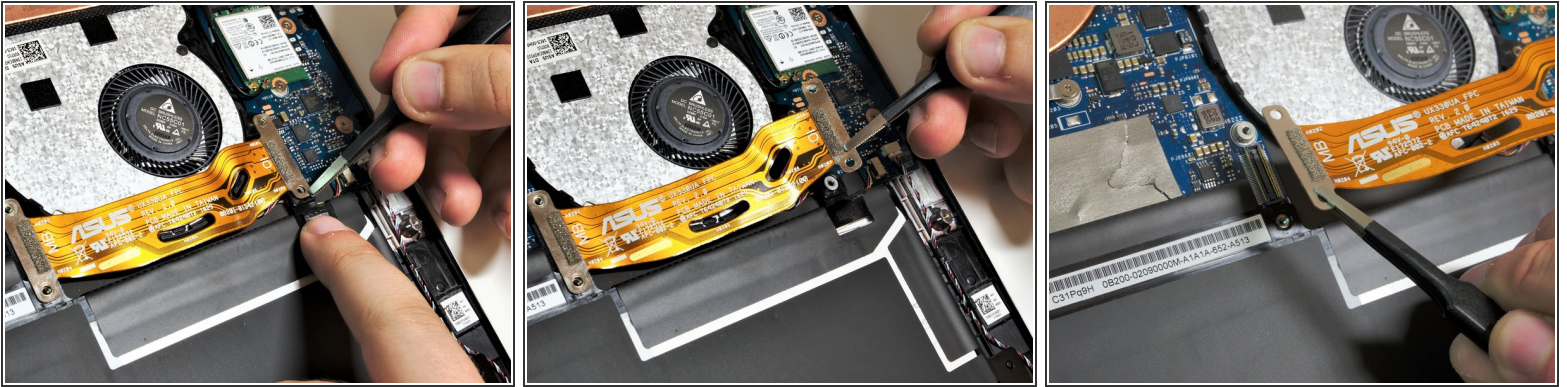
## Step 6



- Remove the four 2.8mm screws from the motherboard ribbon connector using the Philips #0 screwdriver bit.

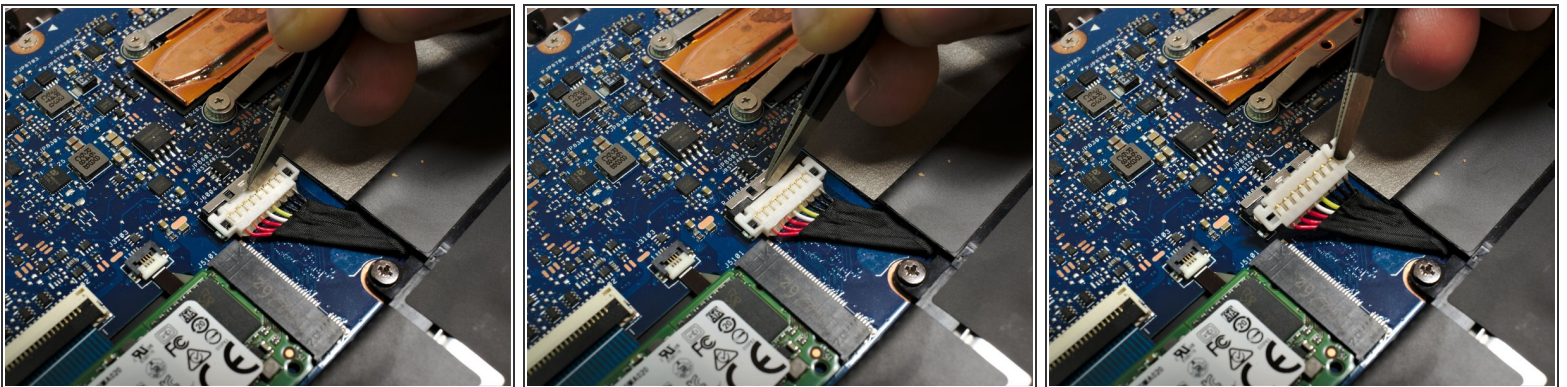
**i** You may have to pull back the black tape located on the bottom right motherboard connector screw. This tape is not necessary for the functionality of the device and can be discarded if necessary.

## Step 7



- Remove the motherboard ribbon connector by pulling up on the metal ends with the blunt nose tweezers.
- ❗ You may have to hold down the black tape in order to be able to lift up the connector.
- 🔧 To reconnect the motherboard ribbon, simply press the ends of the ribbon on top of the connector. This should require minimal force.

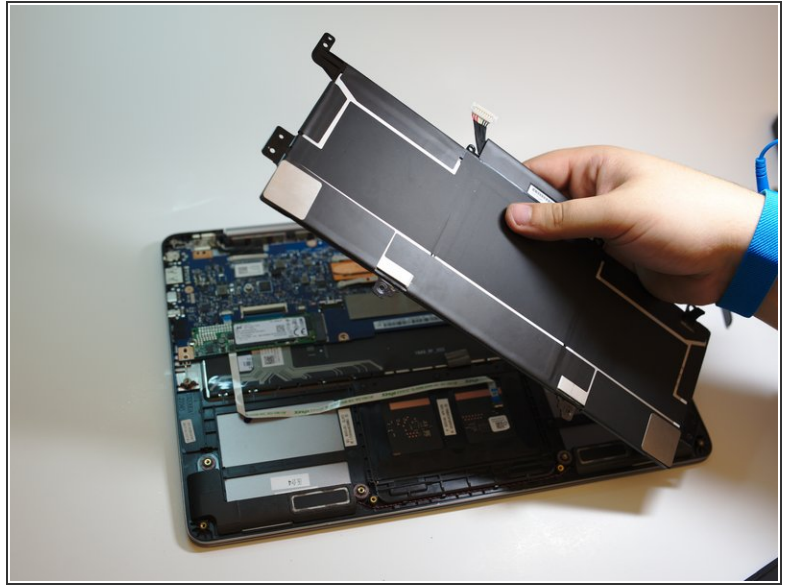
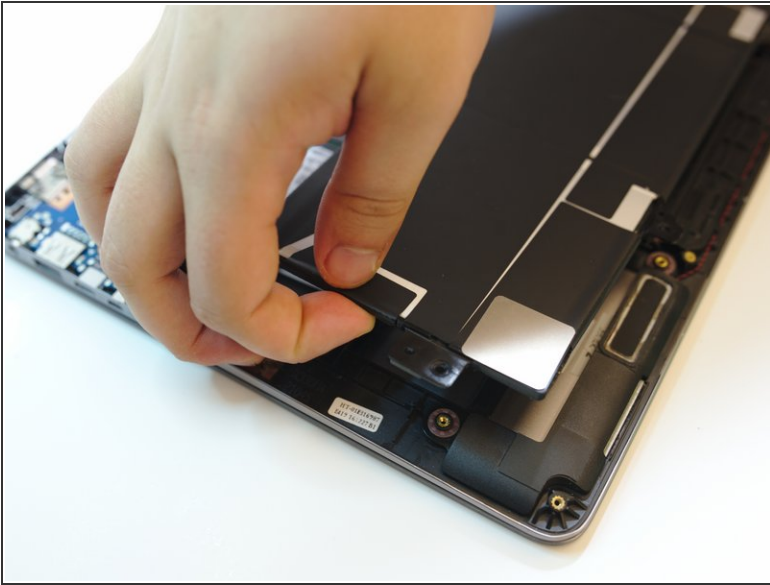
## Step 8



- Pull back the silver battery connector lock with the blunt nose tweezers. This should slide back and should require minimal force.
- Lift the battery connector vertically using the blunt nose tweezers to remove it from the socket.



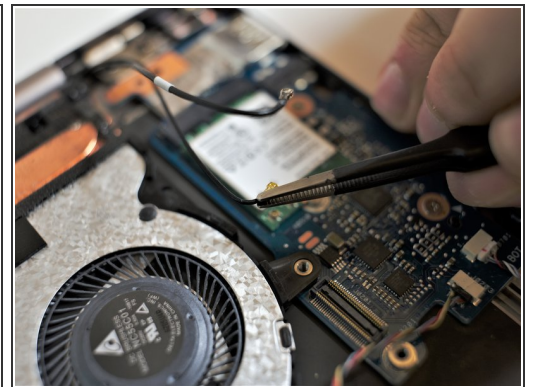
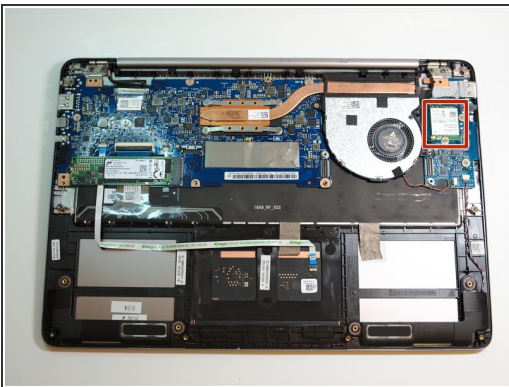
## Step 9



- Gently lift the battery out of the chassis of the device.

⚠ Make sure that you do not bend the battery. Store the battery in a safe area once it has been removed.

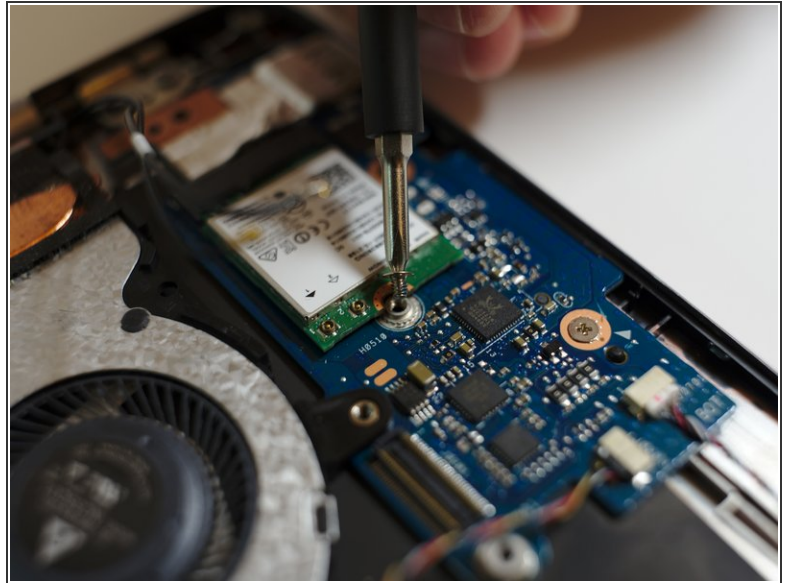
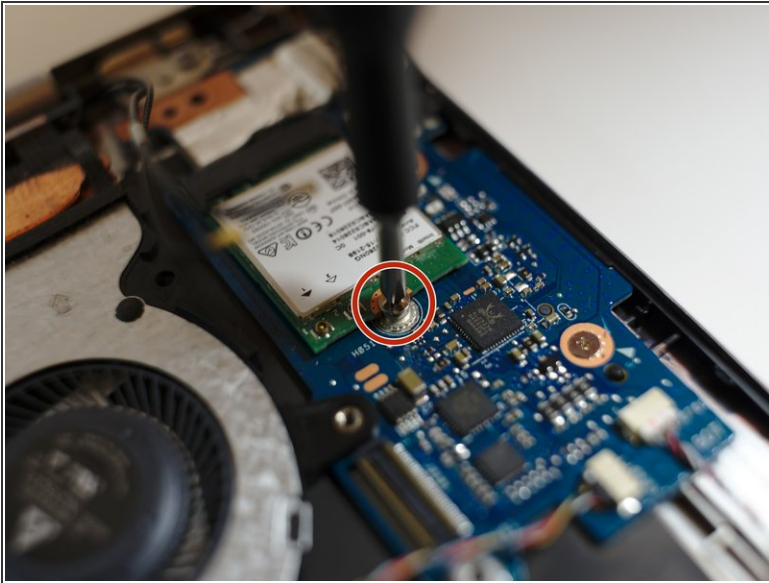
## Step 10 — Wi-Fi Adapter



- Disconnect the two UFL female connector cables by gently prying up with the blunt nose tweezers.
- ☑ Remember which connector was connected to which port. The connector cable with the white strip connects to the port with the white arrow labeled "2".

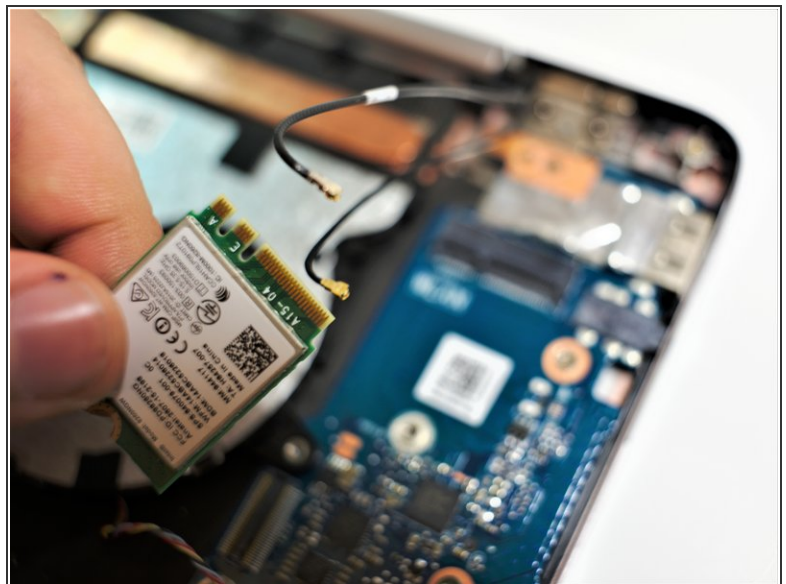
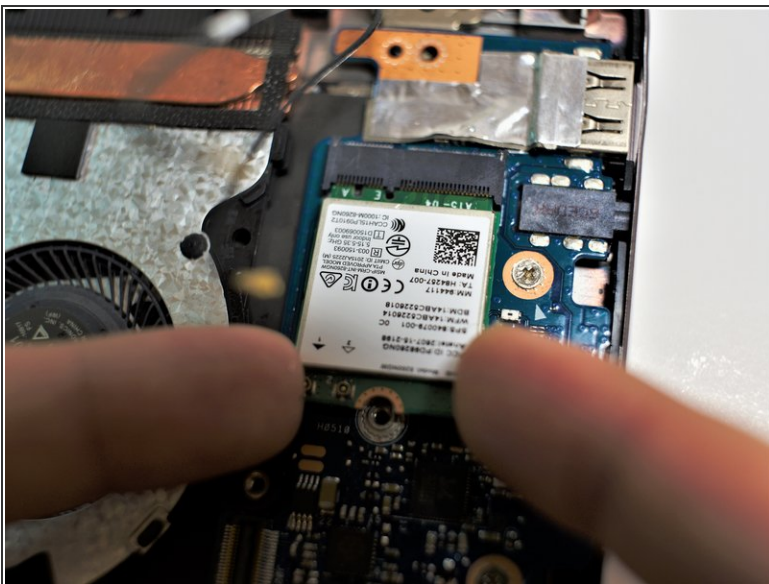


## Step 11



- Remove the single 2.7 mm screw holding the Wi-Fi adapter using the Philips #0 screwdriver bit.

## Step 12



- Gently grip the Wi-Fi adapter by the sides and pull it out with gentle pressure. You may need to slightly wiggle the adapter to get it to slide out easily.

To reassemble your device, follow these instructions in reverse order.