



Atari 5200 Entertainment System Power Button Replacement

A guide to disassembling the Atari Entertainment System to give its user access to repairing the Power Button.

Written By: Alan Abelson



This document was generated on 2019-09-19 06:44:10 AM (MST).

INTRODUCTION

If your Atari Entertainment System has a power button that needs to be repaired, this guide will take you step-by-step on how to gain access to the power button in order to repair it.



TOOLS:

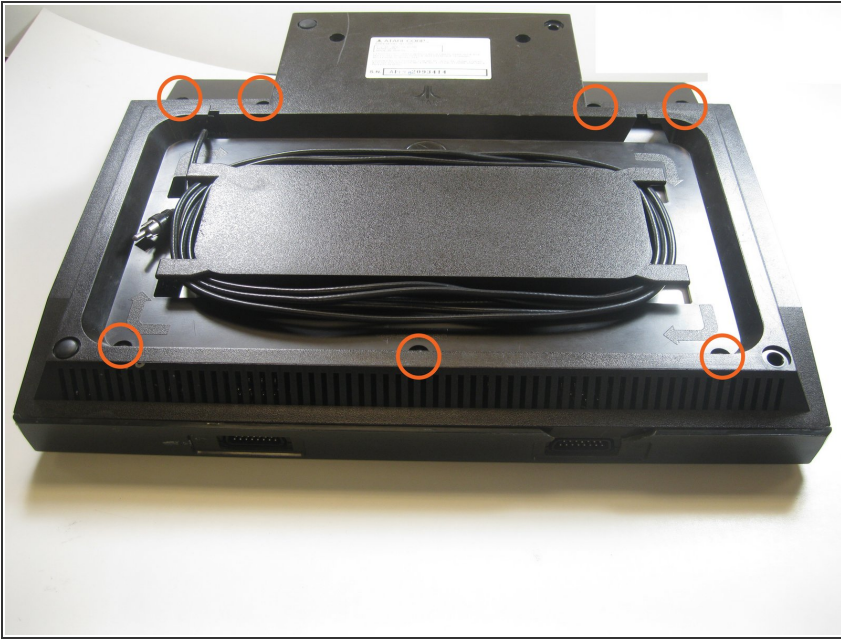
- [Phillips #0 Screwdriver](#) (1)



PARTS:

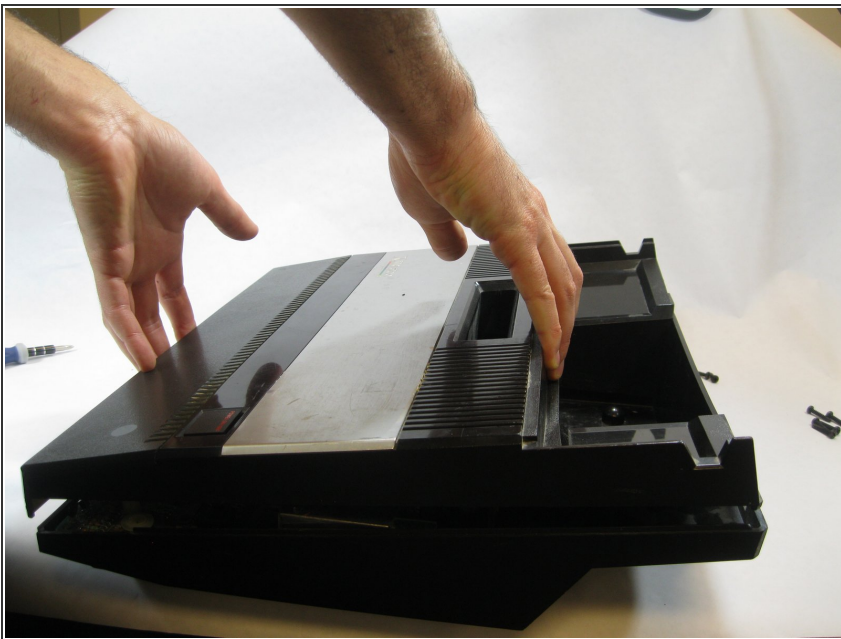
- [Replacement Atari Power Button](#) (1)

Step 1 — Entertainment System Power Button



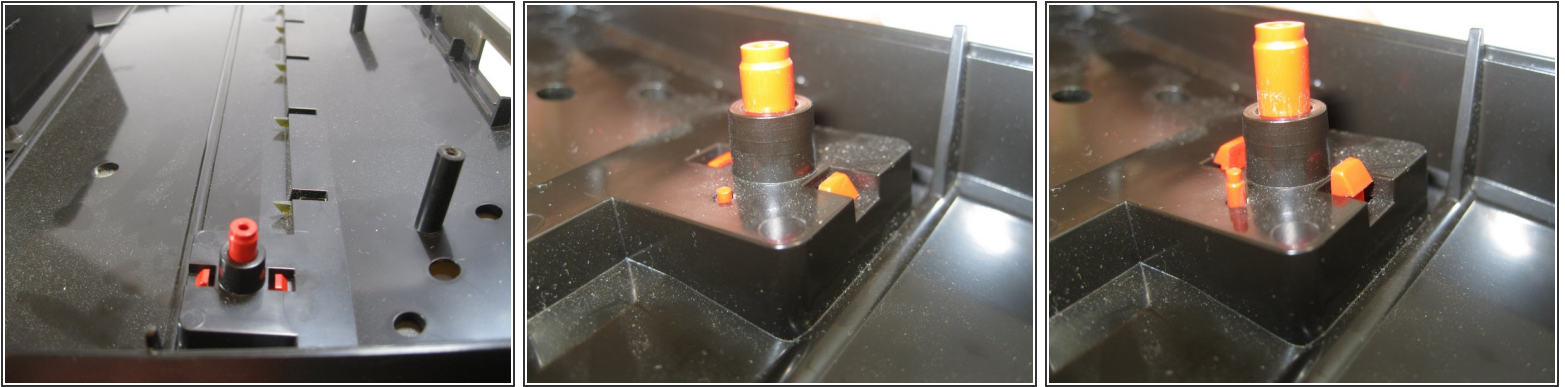
- Gently flip the Atari Entertainment System over. You'll see 7 screws holding the system together. Use a philips head screw driver to remove all seven screws.
- Pictured above is the Atari 5200 upside down. The orange edited circles over all 7 screws.

Step 2



- Gently flip the Atari Entertainment System over to the front side. Remove the top.

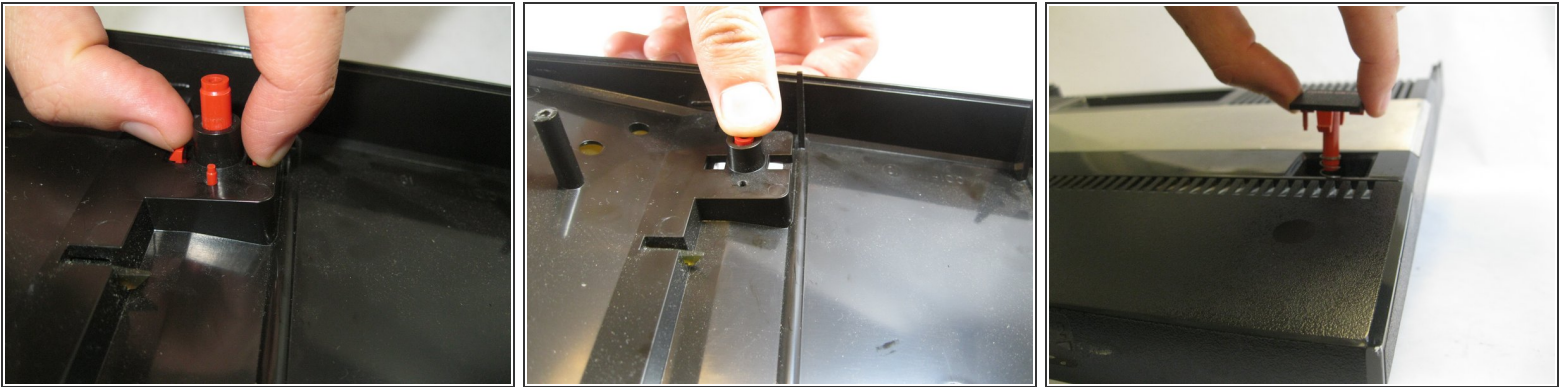
Step 3



- There are orange objects on the side of the system's top, pinch them.

⚠ If the triangles cannot be gripped, push the power button on the opposite side. This will lift the triangle to give access to easier grip.

Step 4



- The Power button can now be removed/clean/replaced.

⚠ Be sure to keep an eye on the spring.

To reassemble your device, follow these instructions in reverse order.