



# Atari 5200 Joystick Repair

A guide for those whose joystick does not feel as perfect as it used to.

Written By: Alan Abelson



---

## INTRODUCTION

The controller's joystick is connected to a sensor via sliding plates, which then move two knobs(one per axis), which are placed inside two pots whose movement the sensors detects. The knobs can occasionally get dislodged out of the pots, causing a "stuck" and undetected joystick.



### TOOLS:

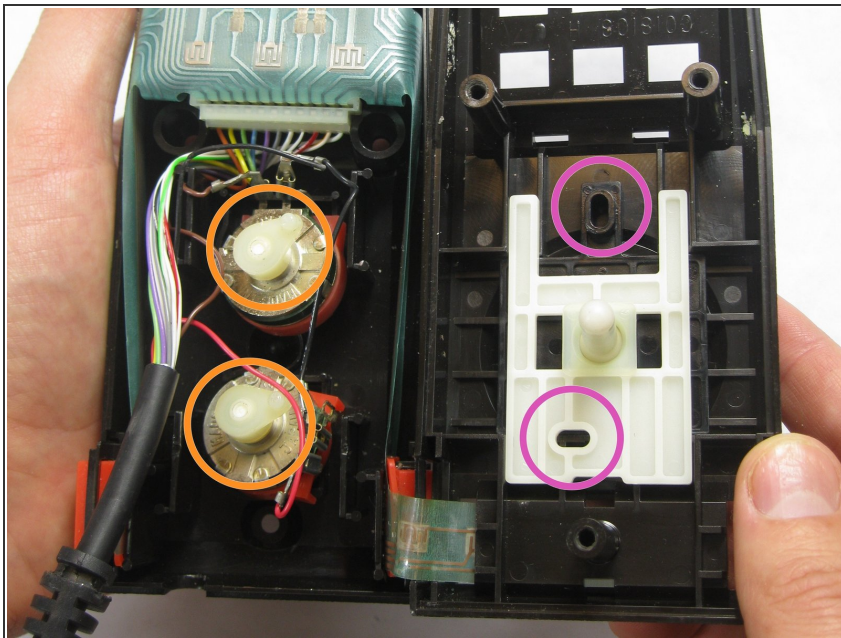
- [Phillips #2 Screwdriver](#) (1)
-

## Step 1 — Opening the Controller



- Turn the controller over, exposing the three screws on the back. Use a 6mm screwdriver to remove these screws.
- Carefully slide and pull the two parts of the controller shell apart, exposing the innards.

## Step 2 — Locating the Knobs and Pots



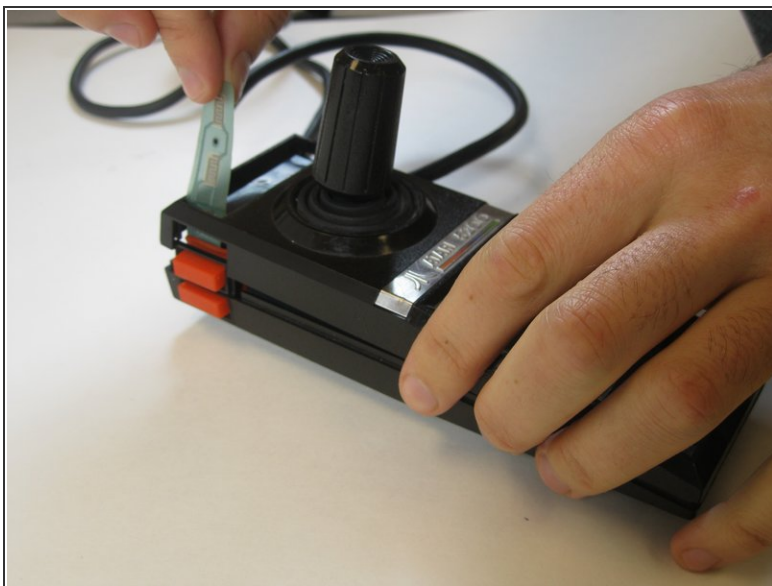
- Find the knobs(closest to the joystick and circled in purple) and the pots(closest to the circuitry and circled in orange). Keep track of these.
  - Align the joystick's metal bar into its cup.
- ⚠ Don't move any of the button circuitry, especially those of the START/PAUSE/RESET buttons.

### Step 3 — Reassembly Part 1



- Use a spudger to remove the top frame.
- Take off the plate.
- Remove the rubber buttons.

### Step 4 — Reassembly Part 2



- Realign the top and bottom of the controller.
- Pull the circuit strip through the new space.



## Step 5 — Reassembly Part 3



- Return the start buttons to the top of the controller
- Snap the frame back into place
- Screw the screws