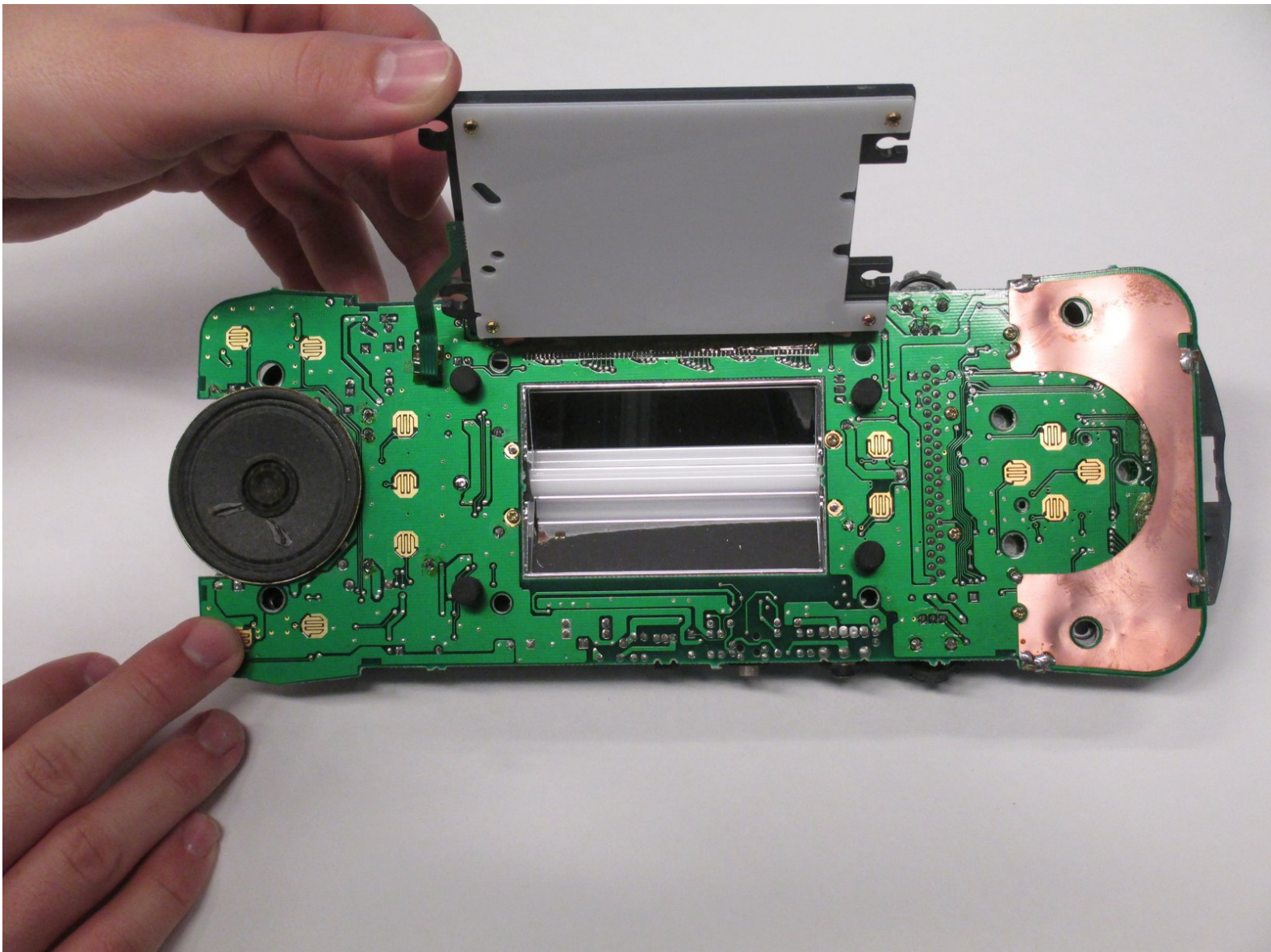




# Atari Lynx Backlight Replacement

This guide will show how to replace a broken backlight.

Written By: John Lopez



---

## INTRODUCTION

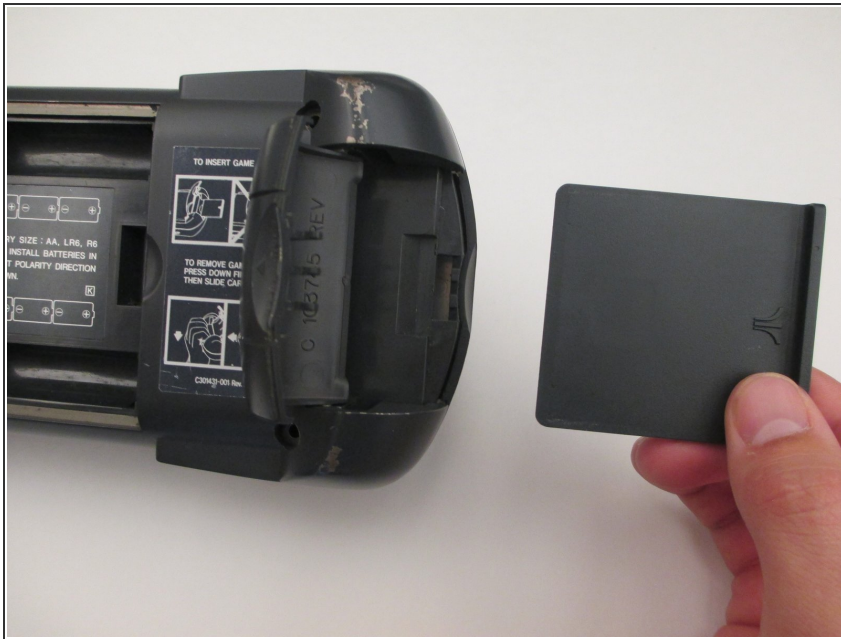
Before starting this guide you may need some experience with soldering/ desoldering. If you do not know how, you can learn by clicking the link we put on step 8 (when you have to desolder the backlight).



### TOOLS:

- [Phillips #1 Screwdriver](#) (1)
  - [Phillips #0 Screwdriver](#) (1)
  - [Soldering Iron](#) (1)
  - [Solder](#) (1)
-

## Step 1 — Atari Lynx



- Before disassembling your Atari Lynx, be sure the device is powered off.
- Remove any game in the console by opening the right latch and sliding the game to the right.

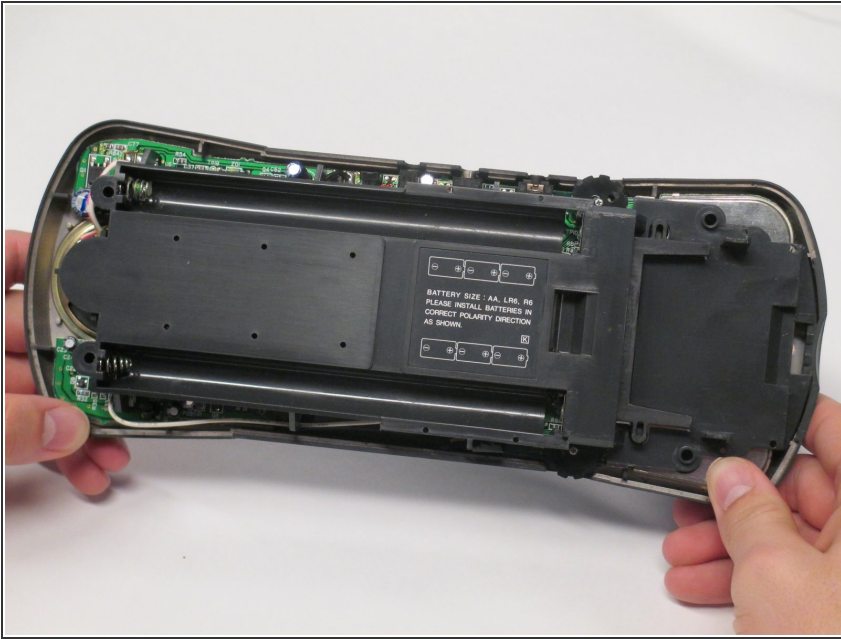
## Step 2



- Remove the four 35 mm Phillips #1 screws at each corner of the backside on the Atari Lynx.
- Pinch the rear panel with your fingers and lift away from the Atari.



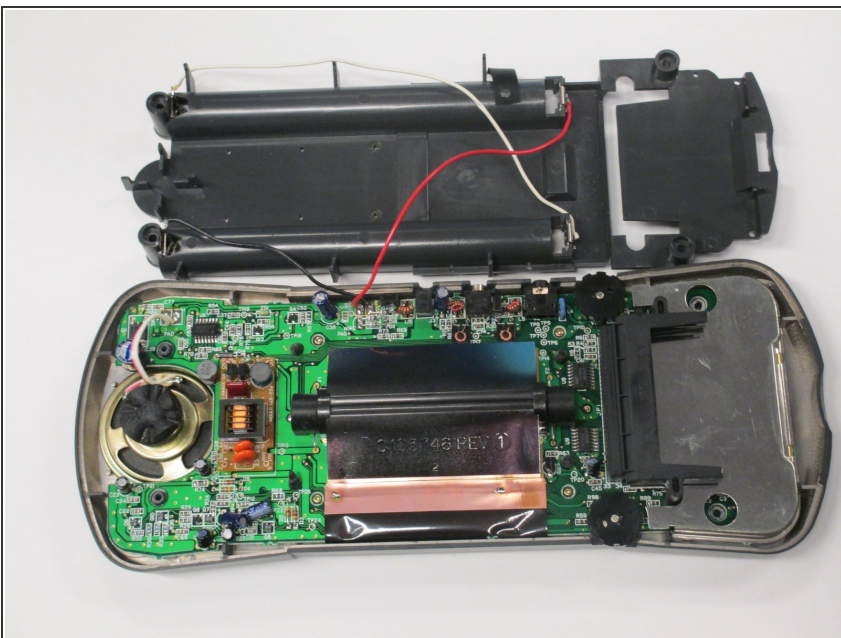
## Step 3



- Remove the battery panel by pinching the sides with your fingers and lifting it away from the Atari.

⚠ Be sure not to tear any wires attached to battery panel.

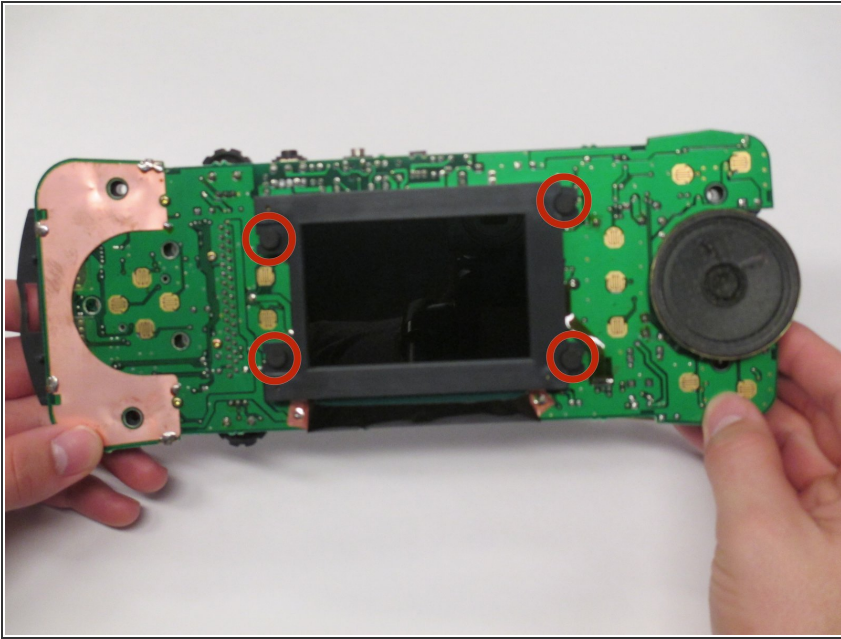
## Step 4



- Remove the control panel by pinching the sides with your fingers and lifting it away from the Atari.

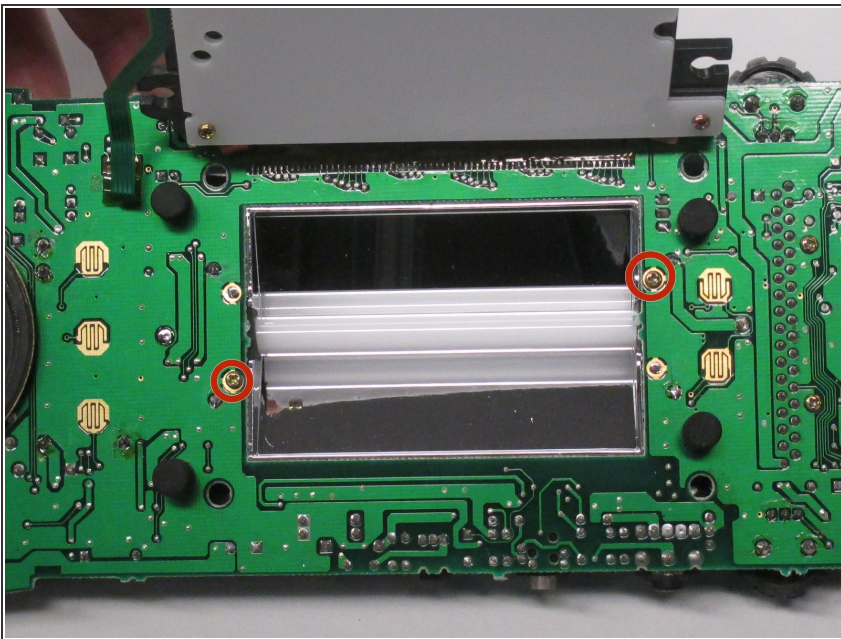
⚠ Be sure not to tear the speaker wire while removing the control panel.

## Step 5 — Backlight



- Pull out the logic-board.
- Pull to the sides the four rubber tabs holding in the screen

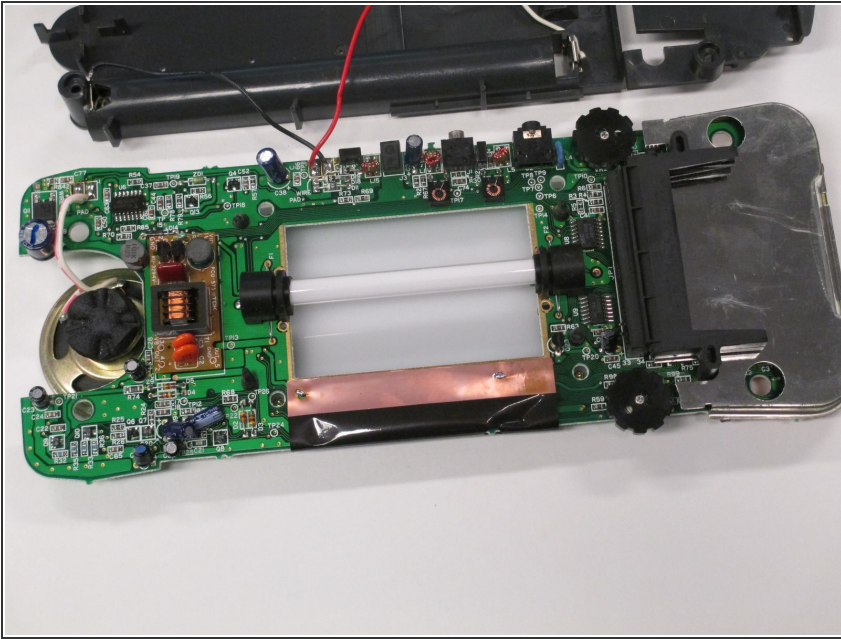
## Step 6



- Unscrew the two 10 mm screws as shown with a Phillips #0 screwdriver in order to remove the shield behind the backlight.

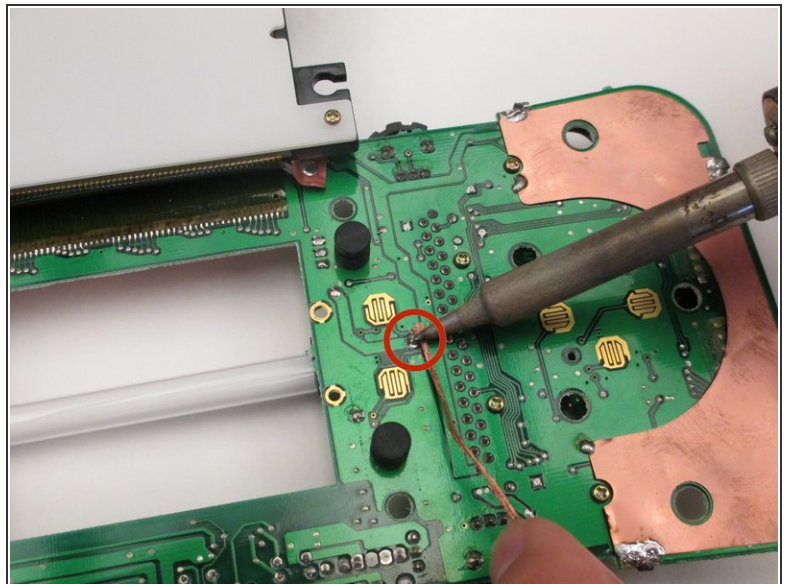
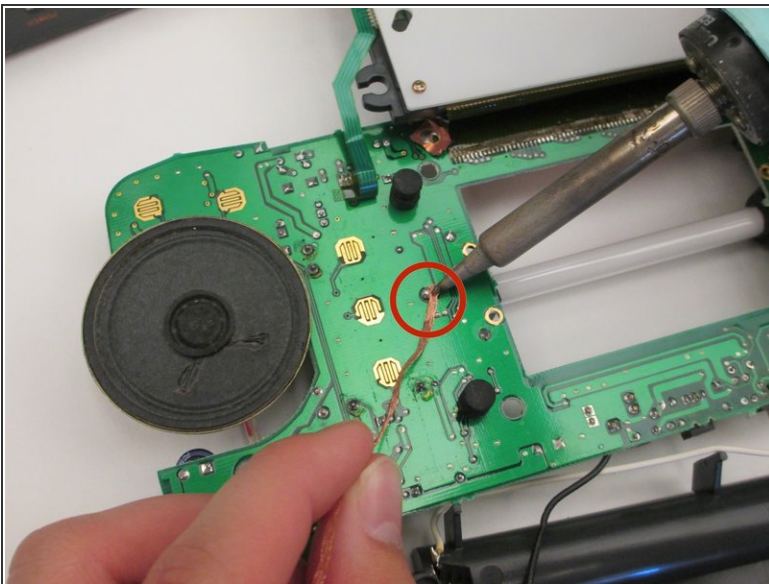


## Step 7



- Flip over the motherboard and remove the shield behind the backlight.

## Step 8



- Flip the motherboard back over and desolder the two components that are holding the backlight in place.
- If you need help with basic desoldering, click [here](#).

To reassemble your device, follow these instructions in reverse order.