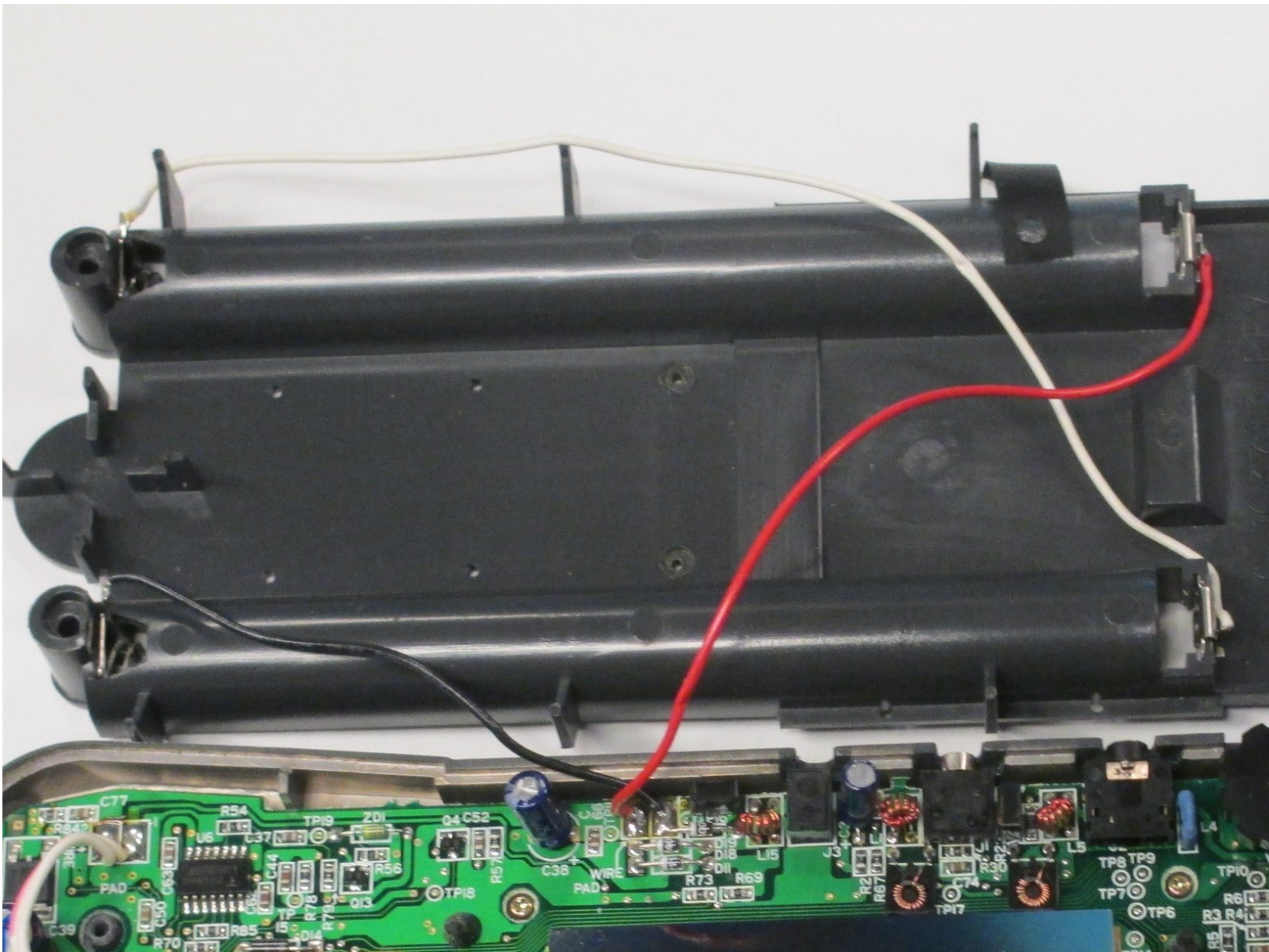




# Atari Lynx Battery Wire Replacement

This repair guide will show how to replace the wires for the battery pack.

Written By: John Lopez



---

## INTRODUCTION

Before starting this guide you may need some experience with soldering/ desoldering. If you do not know how, you can learn by clicking the link on step 5 (when you have to desolder the wires).

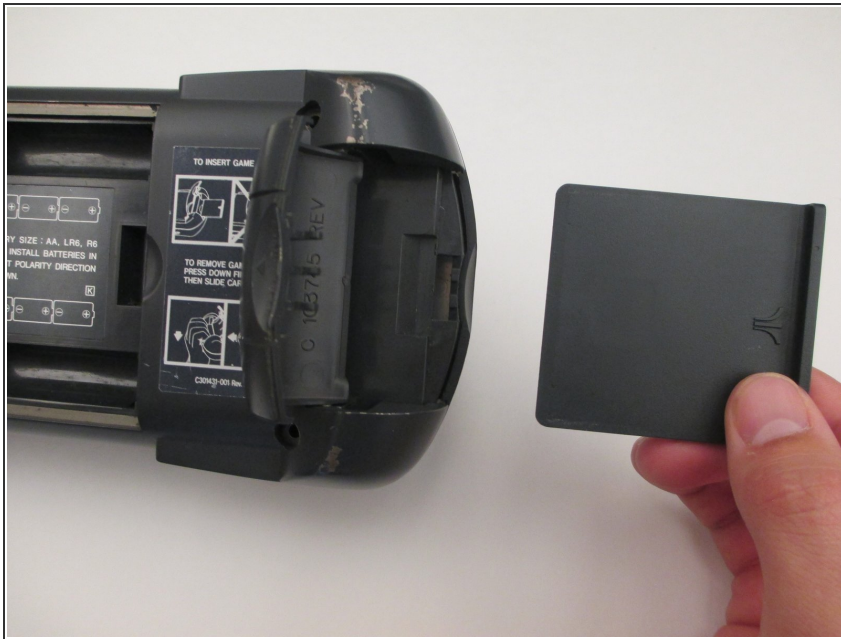
---



### TOOLS:

- [Phillips #1 Screwdriver](#) (1)
  - [Soldering Iron](#) (1)
  - [Solder](#) (1)
-

## Step 1 — Atari Lynx



- Before disassembling your Atari Lynx, be sure the device is powered off.
- Remove any game in the console by opening the right latch and sliding the game to the right.

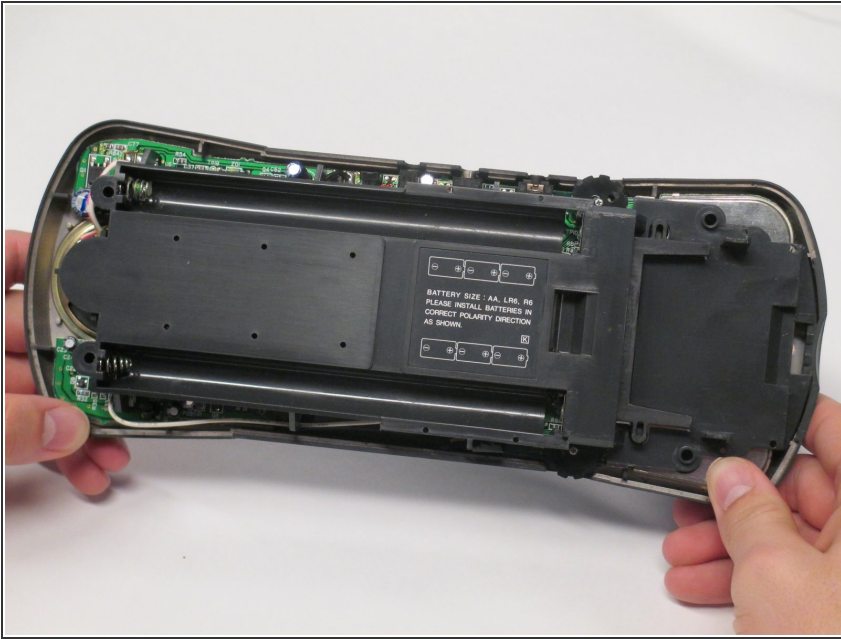
## Step 2



- Remove the four 35 mm Phillips #1 screws at each corner of the backside on the Atari Lynx.
- Pinch the rear panel with your fingers and lift away from the Atari.

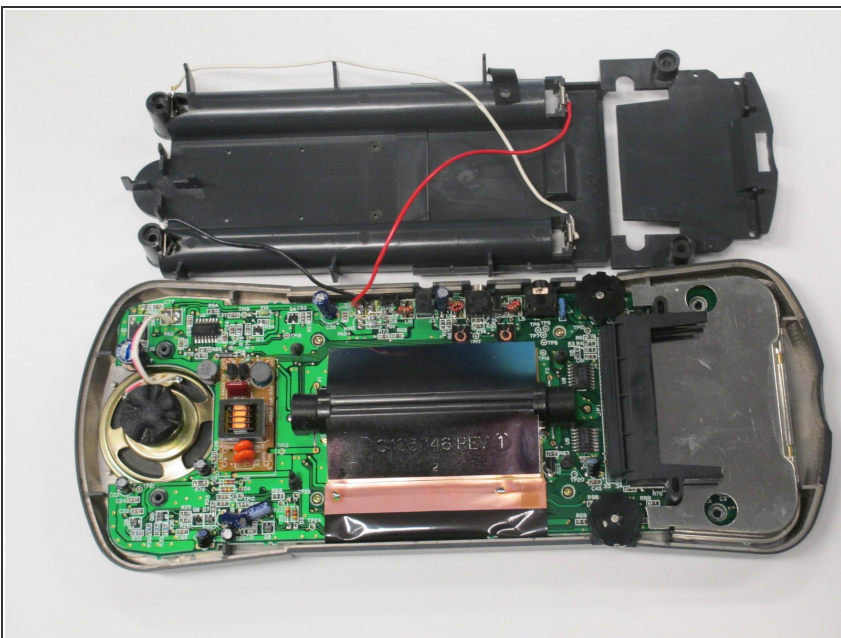


## Step 3



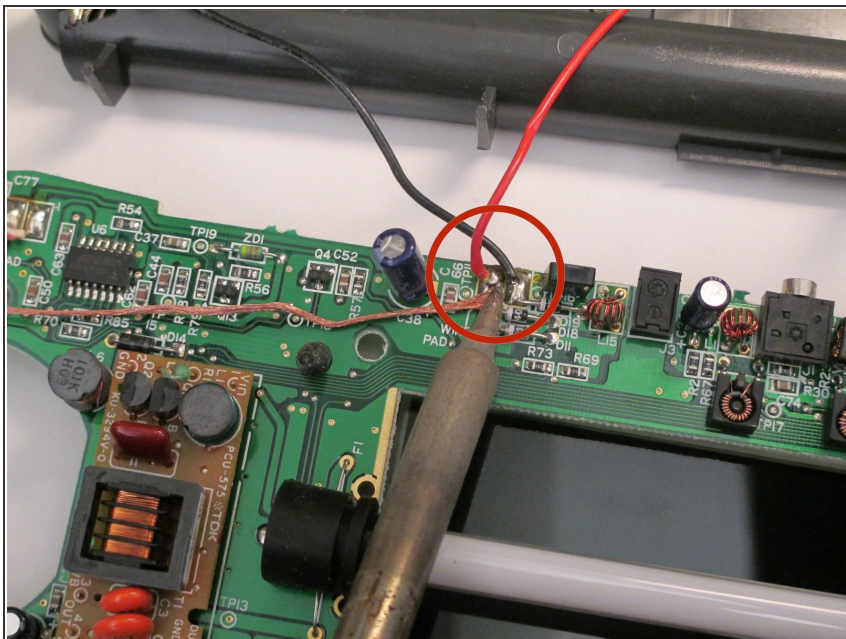
- Remove the battery panel by pinching the sides with your fingers and lifting it away from the Atari.
- ⚠ Be sure not to tear any wires attached to battery panel.

## Step 4



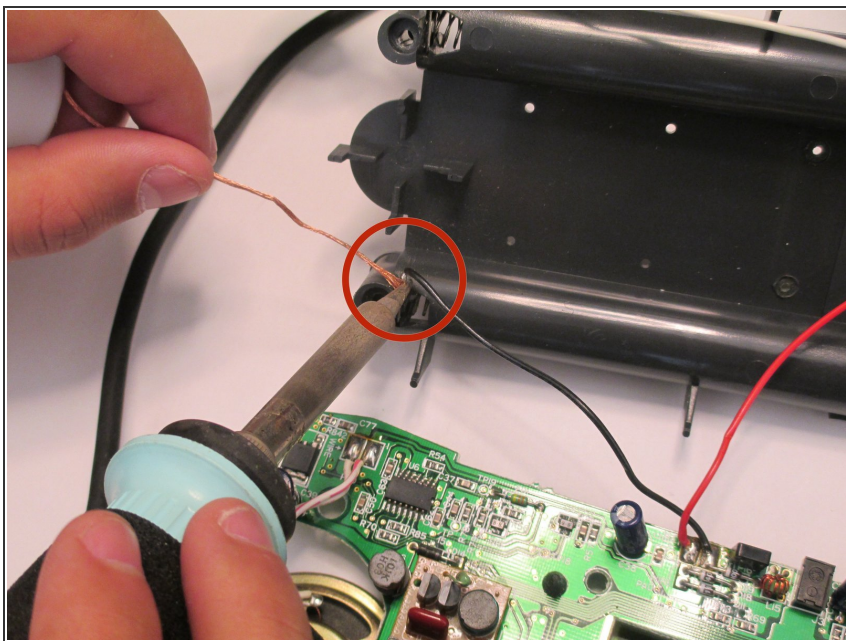
- Remove the control panel by pinching the sides with your fingers and lifting it away from the Atari.
- ⚠ Be sure not to tear the speaker wire while removing the control panel.

## Step 5 — Battery Wires



- Desolder both the black and red wire as shown.
- If you need help with basic desoldering, click [here](#).

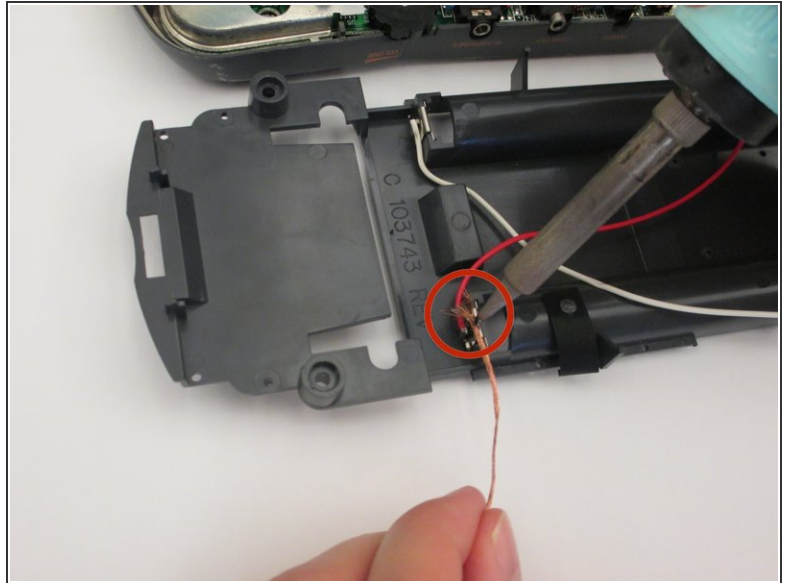
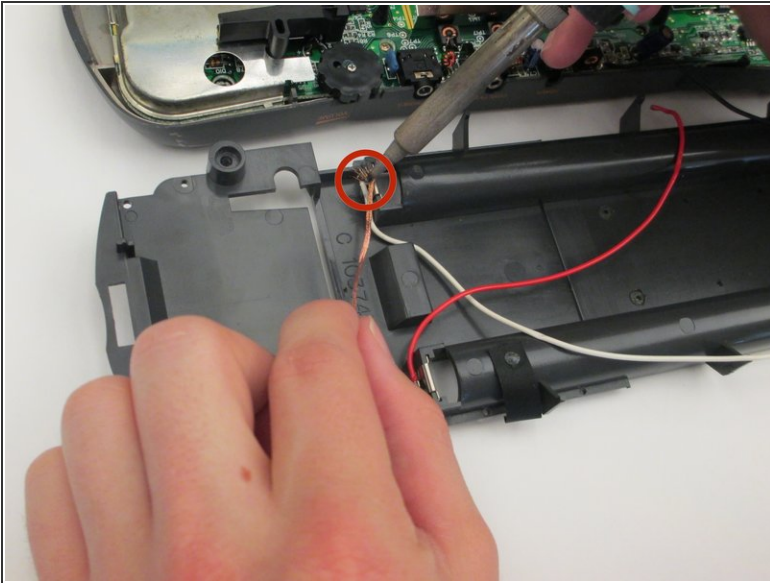
## Step 6



- Desolder the black wire as shown.

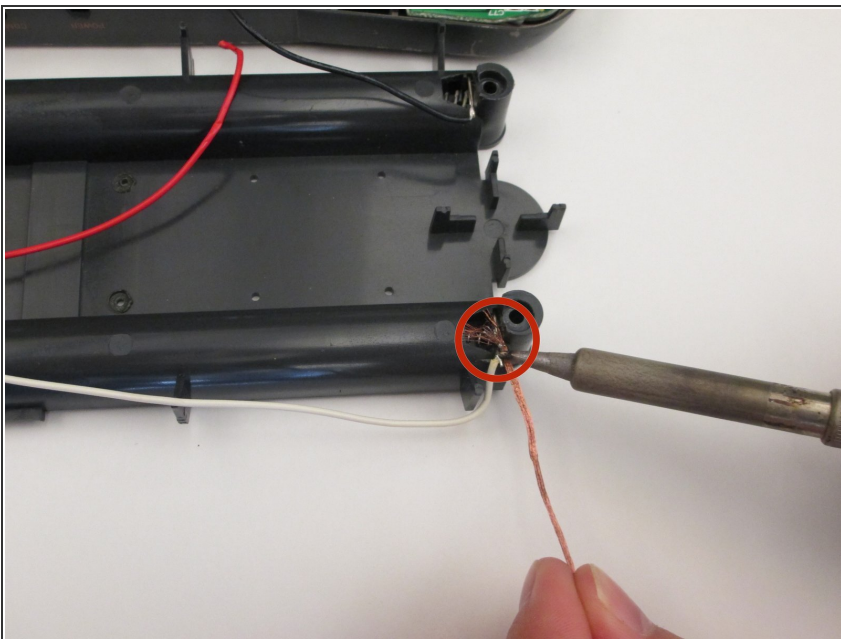


## Step 7



- Desolder the white wire and then the red wire as shown.

## Step 8



- Desolder the white wire as shown in order for the battery pack to be completely removed from the device.

To reassemble your device, follow these instructions in reverse order.