



Audio Technica ATH-AD500 Driver Replacement

Written By: Nick Levy



INTRODUCTION

This guide will help your install a new driver.



TOOLS:

- [Desoldering Braid](#) (1)
 - [Phillips #1 Screwdriver](#) (1)
 - [Soldering Iron](#) (1)
-

Step 1 — Speaker Assembly



- Remove the ear pads by peeling them away from the grill.

Step 2




- Remove all four 1cm screws on the inside of the headphone using a #1 Phillips head.

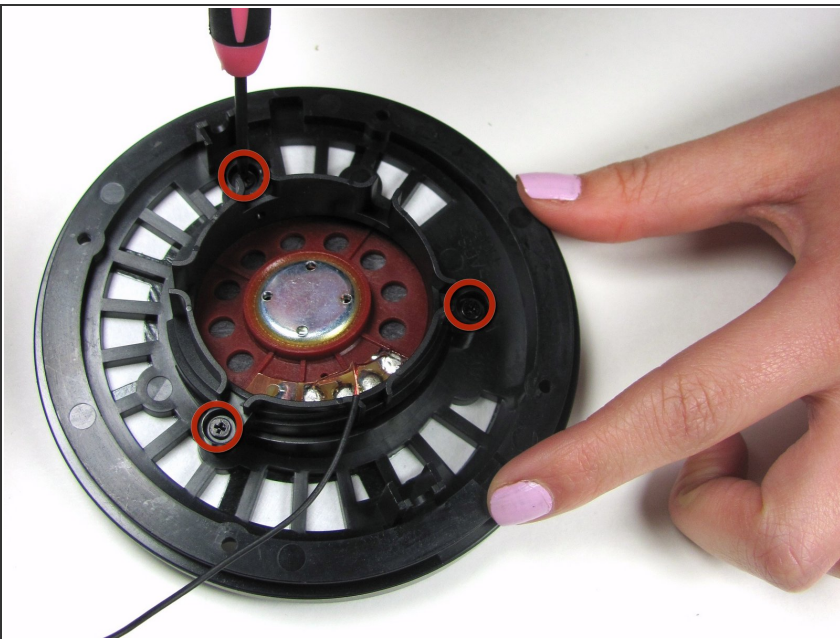
Step 3



- Remove the speaker from the grill by pulling it out.

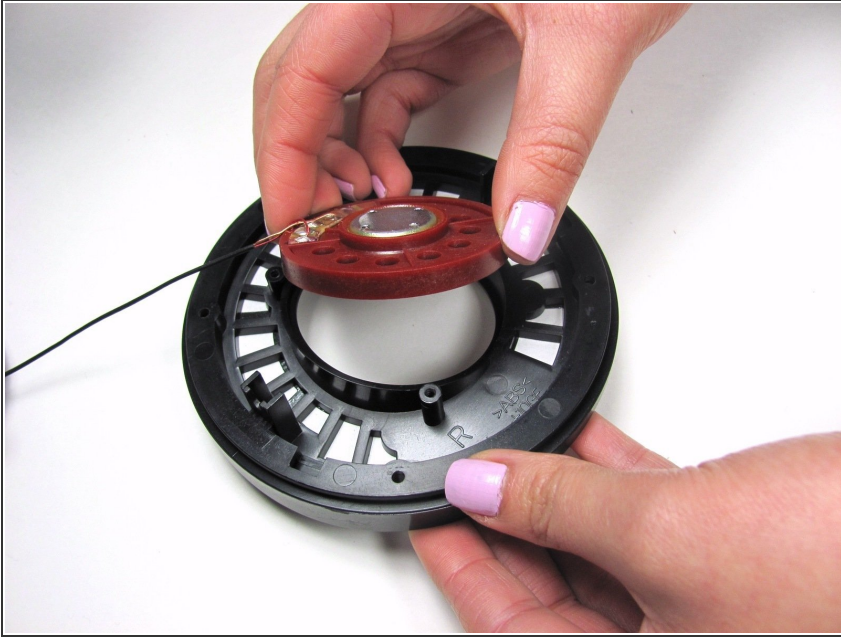
 Remove the speaker carefully so you do not rip the wires out.

Step 4 — Driver



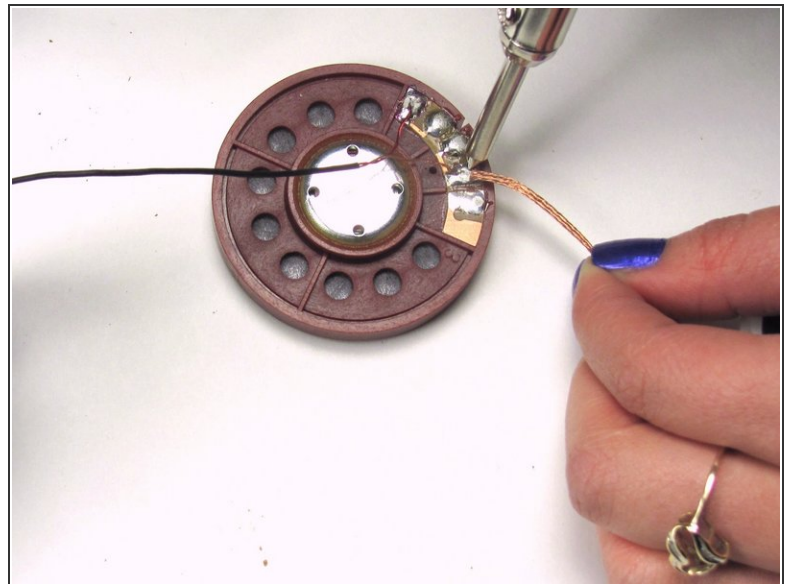
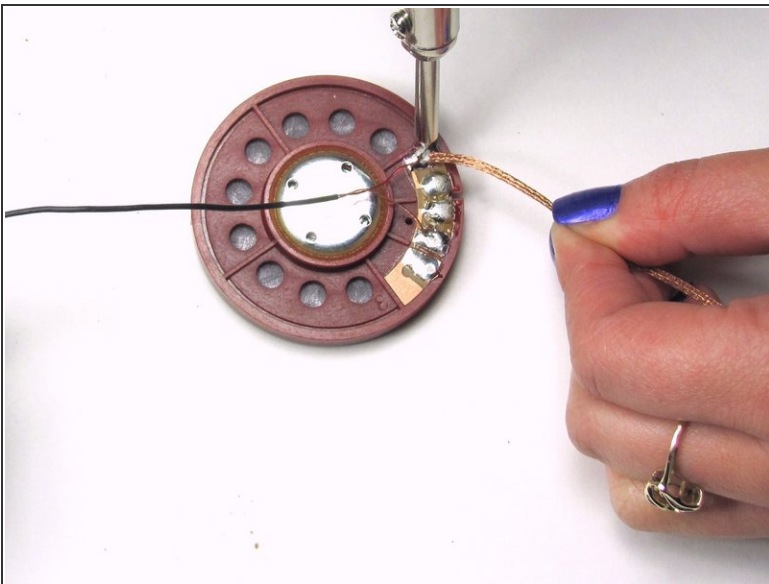
- With a #0 phillips head, unscrew the three, 1 cm screws which are holding the driver (red wafer) in its bracket.

Step 5



- Pull the driver out of its bracket.

Step 6

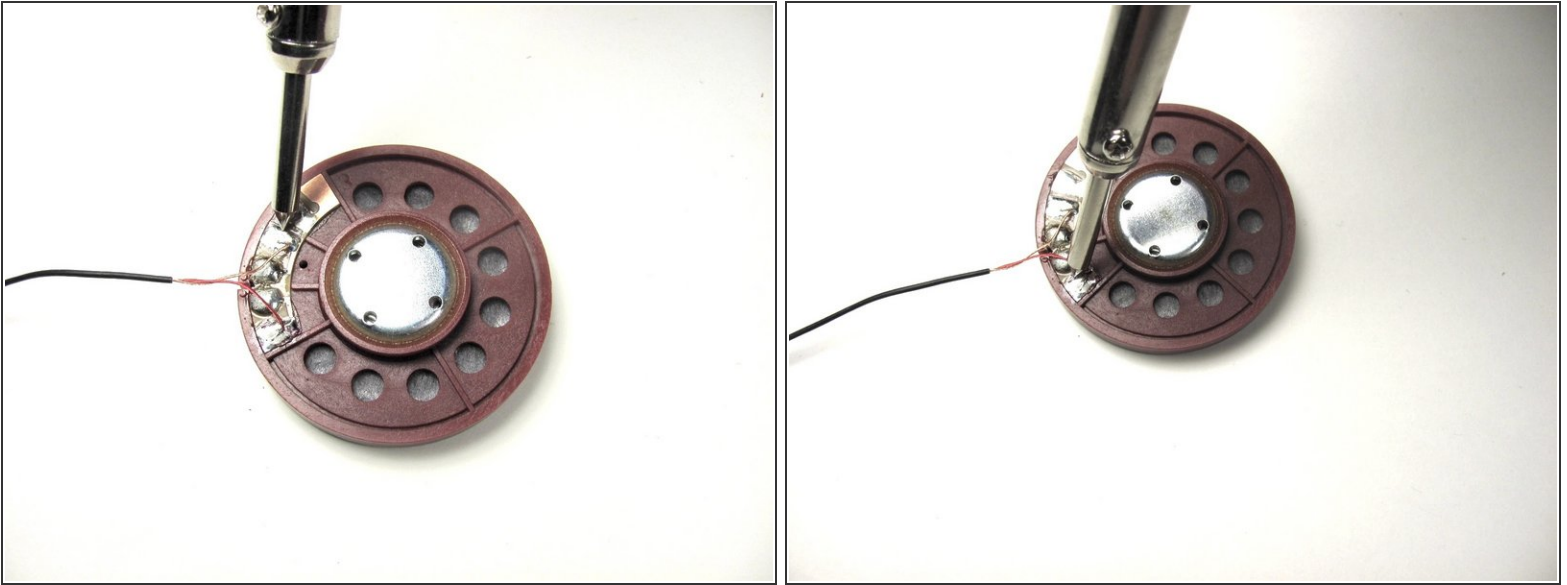



- Remove the two wires, red and yellow, by de-soldering them from the driver using a soldering iron and desoldering wick. Reference [How To Solder and Desolder Connections](#).



The areas where you solder will be hot so wait until the solder joints are cool before handling the wires again.

Step 7



- Connect the existing wires to the new driver by re-soldering the wires using the soldering iron.
 - Using the copper as a reference, re-solder the yellow wire to the top left solder joint and the red to the bottom left solder joint.
-  The areas where you solder will be hot so wait until the solder joints are cool before handling the wires again.

To reassemble your device, follow these instructions in reverse order.