



Audiovox CDM-8910 Rear Case Replacement

Written By: Carlos Guerrero



 **TOOLS:**

- [iFixit Opening Tools](#) (1)
 - [Phillips #00 Screwdriver](#) (1)
-

Step 1 — Antenna



- Locate the antenna (shown in red box) at the top of the phone when closed.

Step 2



- Using your thumb and index finger, grip the antenna near its base and unscrew counter clockwise. Once loose, remove the antenna by pulling it from its insert hole.

Step 3 — Battery



- Locate the back side of the phone.
- The battery is the large main compartment (red box).

Step 4



- Use your finger to slide the latch (circled) upwards.
- While holding the latch up, pull the battery off the phone.

Step 5



- The back of the phone will look like this when the battery is correctly removed.

Step 6 — Rear Case



- Peel the rubber indicated toward the top of the phone

Step 7



- Remove the screw that sits underneath the rubber covering.

Step 8



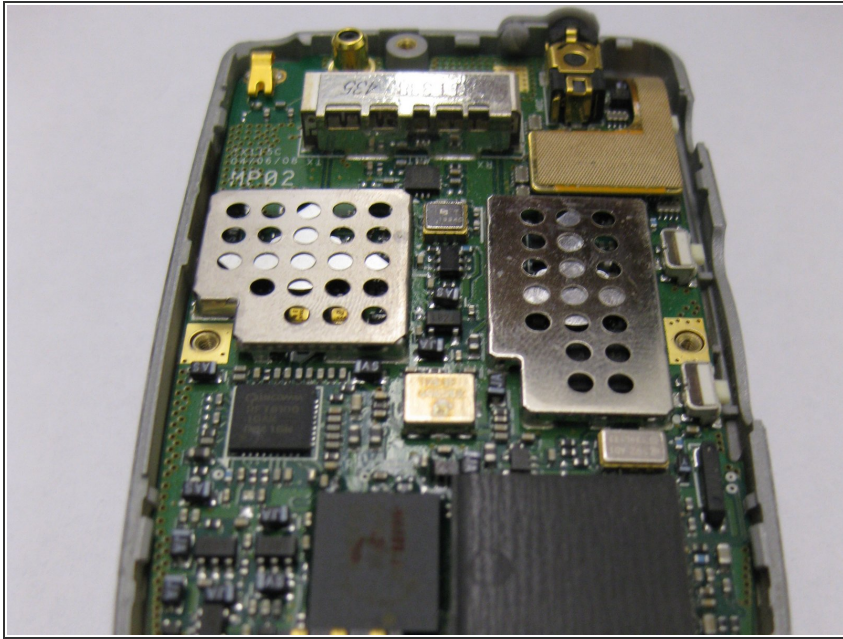
- Remove the five (5) total screws using a Philips head screwdriver.

Step 9



- Use spudger and insert it towards the bottom of the phone as pictured.
- Carefully working yourself around the phone with the spudger, pry it open. This may require a bit of force.
- The volume control button will be loose, so make sure to take it out once the rear case is fully removed.

Step 10



- The back case should now be completely removed and the motherboard will be visible.

To reassemble your device, follow these instructions in reverse order.