



Autosampler Node Teardown

This teardown will demonstrate how to take apart the autosampler related components of a node.
To reassemble, follow the teardown in reverse.

Written By: Nicholas Jeng





TOOLS:

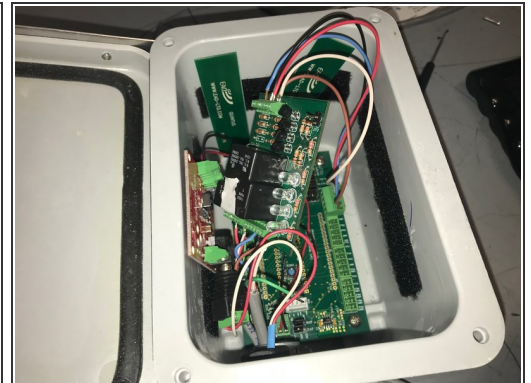
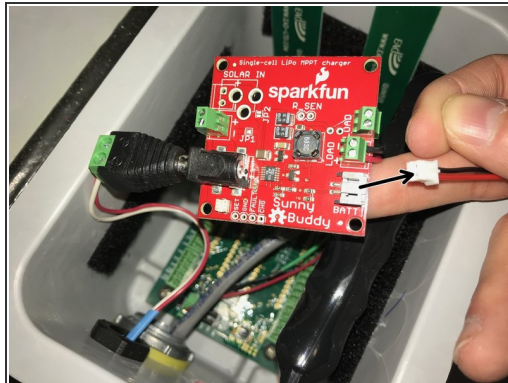
- [Phillips #0 Screwdriver](#) (1)
 - [Flathead 3/32" or 2.5 mm Screwdriver](#) (1)
-

Step 1 — Node Overview



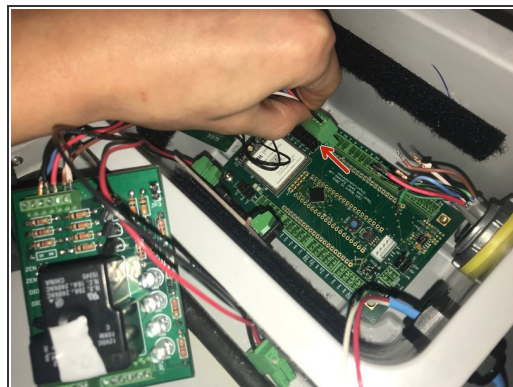
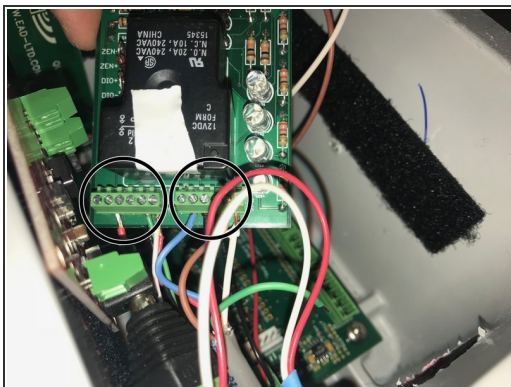
- i** Generally, there will also be ultrasonic components, such as wires, present within the node. There is no ultrasonic connected to our node in order to focus entirely on the autosampler

Step 2 — Disconnect and Remove the Battery



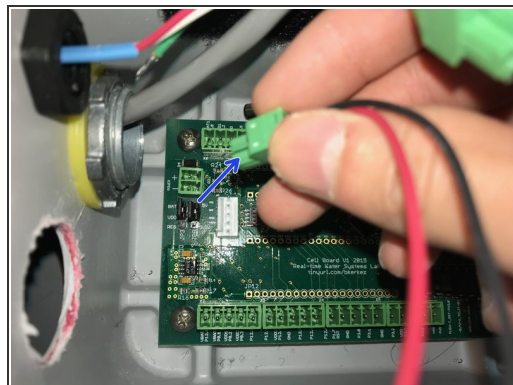
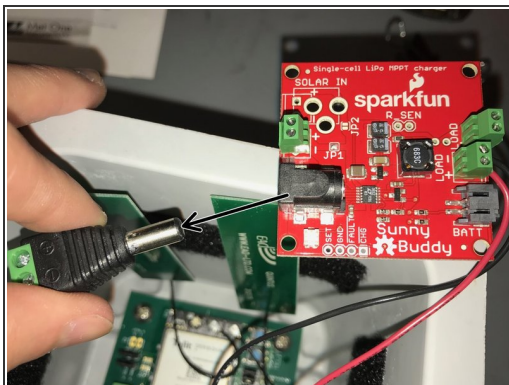
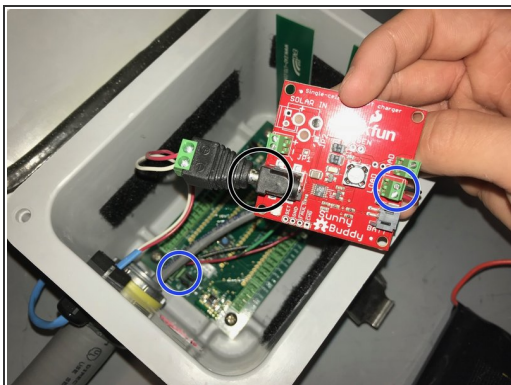
- !** Ensure you remove the battery first before doing anything else

Step 3 — Disconnect Relay



- i** If you choose to disconnect the wires from the terminal, we recommend you either write down the wires' respective locations on the terminal, or consult our pin documentation when reassembling


Step 4 — Remove the Solar Charger



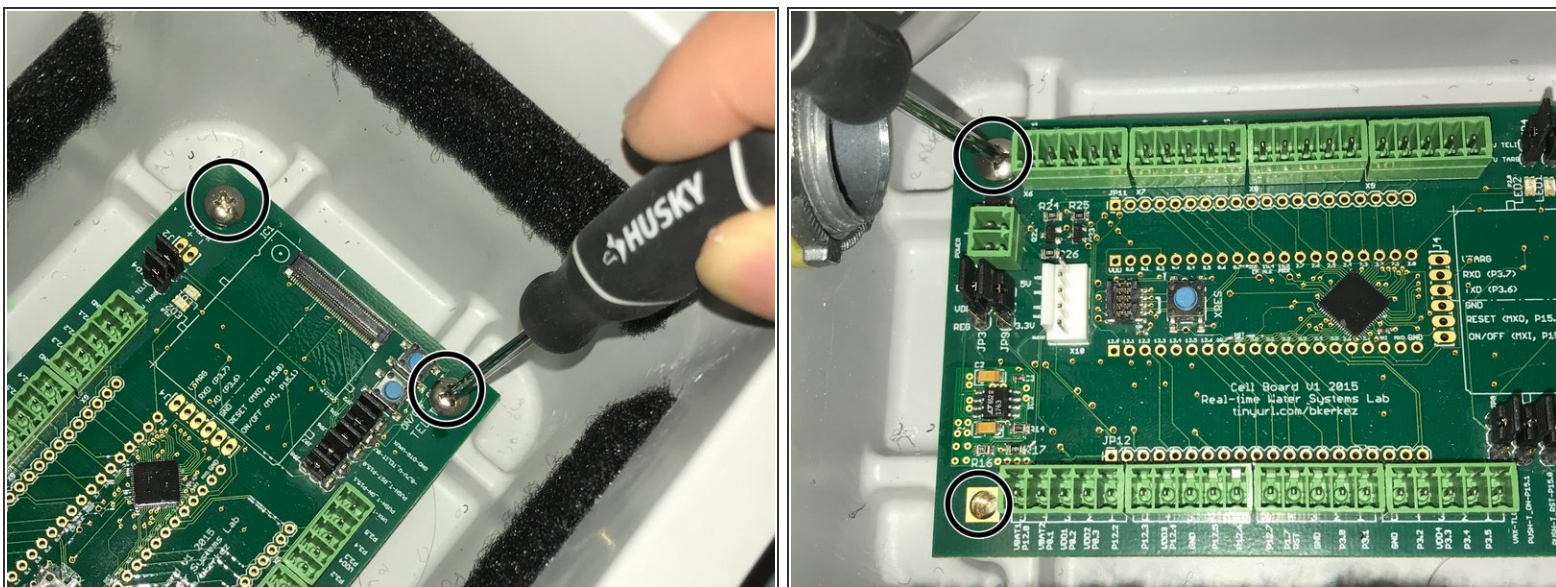
- i** To disconnect the blue circled point on the solar charger, you have to remove the terminal at the blue circle on the board


Step 5 — Remove the Cell Module from the Board



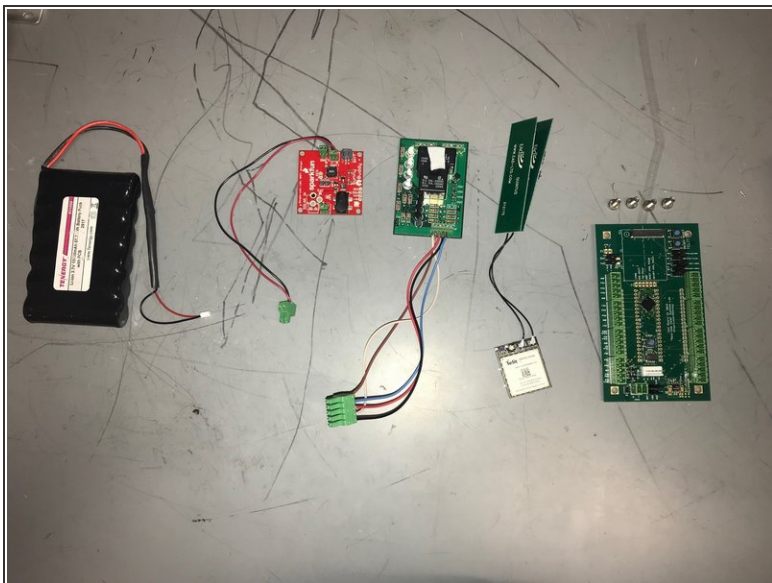
 Pull the module from the bottom; pulling the module in a different way may damage it

Step 6 — Unscrew and Remove Board



 In the second image, one of the screws is already removed

Step 7 — Node Overview



- i** With the interior of the small node removed, these are the components you should have (from left to right)
- The battery
 - Solar charger with terminal still attached
 - Relay with terminal still attached
 - Module with antenna still attached
 - Board with 4 screws