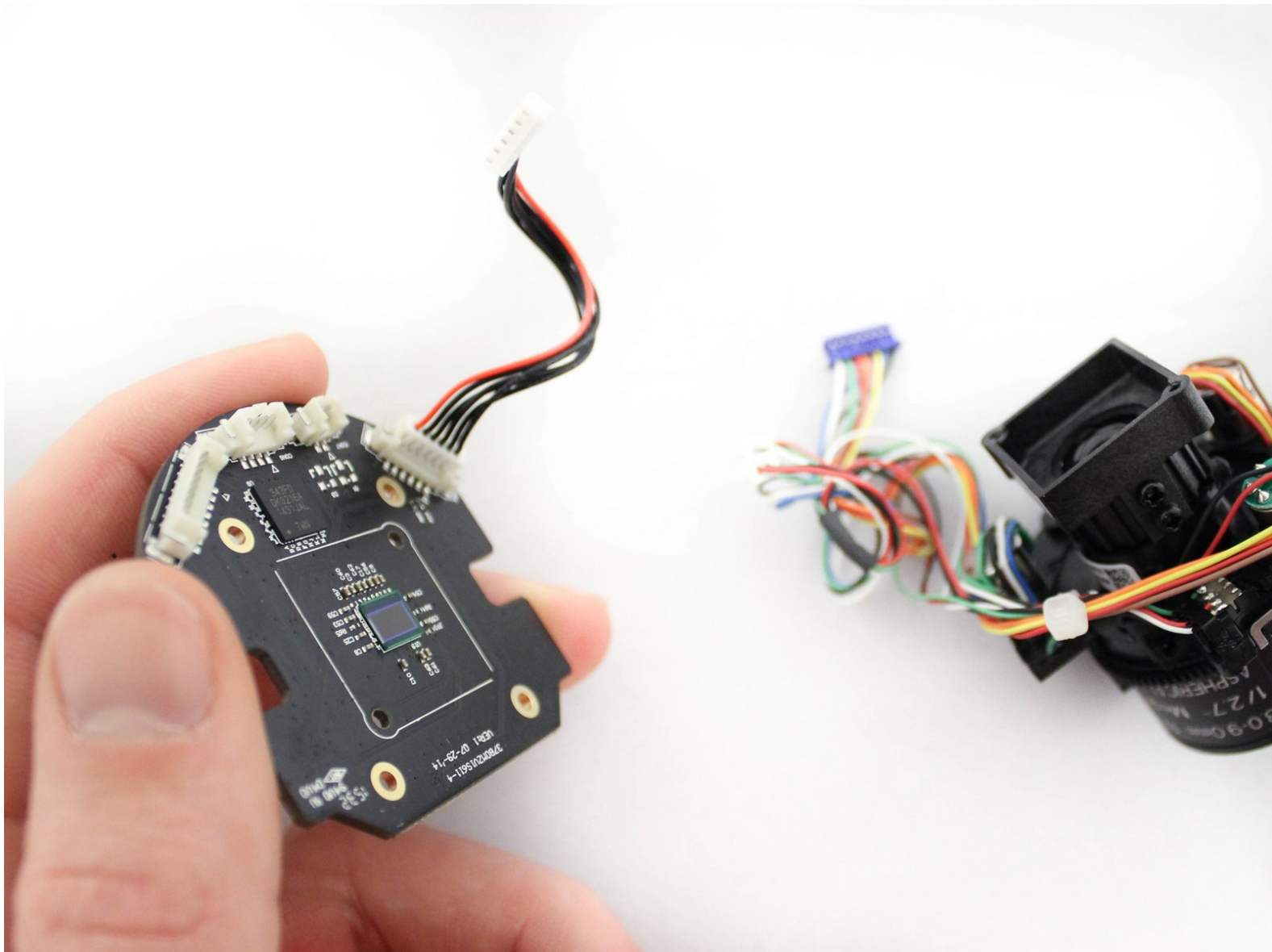




# AvertX HD810 Motherboard Replacement

In this guide we remove the 4MP (mega pixel) camera's motherboard.

Written By: Elisabeth Garcia



---

## INTRODUCTION

This guide provides steps to remove the AvertX HD810's 4MP (mega pixel) camera's motherboard for replacement. **It's important to have the camera turned off and unplugged for this operation.**

---

### TOOLS:

- [T10 Torx Security Bit Screwdriver](#) (1)
  - [Phillips #1 Screwdriver](#) (1)
  - [Phillips #0 Screwdriver](#) (1)
  - [Phillips #000 Screwdriver](#) (1)
-

## Step 1 — Clear Dome Cover



- Lift off the paintable snap-on cover from the AvertX HD810 dome security camera.

⚠️ Optimally, the device should be turned off and the PoE (Power over Ethernet) unplugged.

## Step 2



- Loosen **both** 10mm screws on either side of the clear dome cover housing using a T10 Torx security screwdriver.

**i** It is not recommended to remove the screws from the clear dome cover housing. The screws are apart of the cover and not intended to come out.

### Step 3



- Gently pull off the clear dome cover from the camera base.

### Step 4 — IR LED Lightboard



- Use the PH1 screwdriver to remove or loosen **both** 10mm screws on either side of the inner protective lens cover. **This will loosen both the cover and the IR LED lightboard.**
- ⓘ The cover and the lightboard are two separate pieces held in place by these two screws. The cover should be set aside first before continuing with the lightboard.



## Step 5



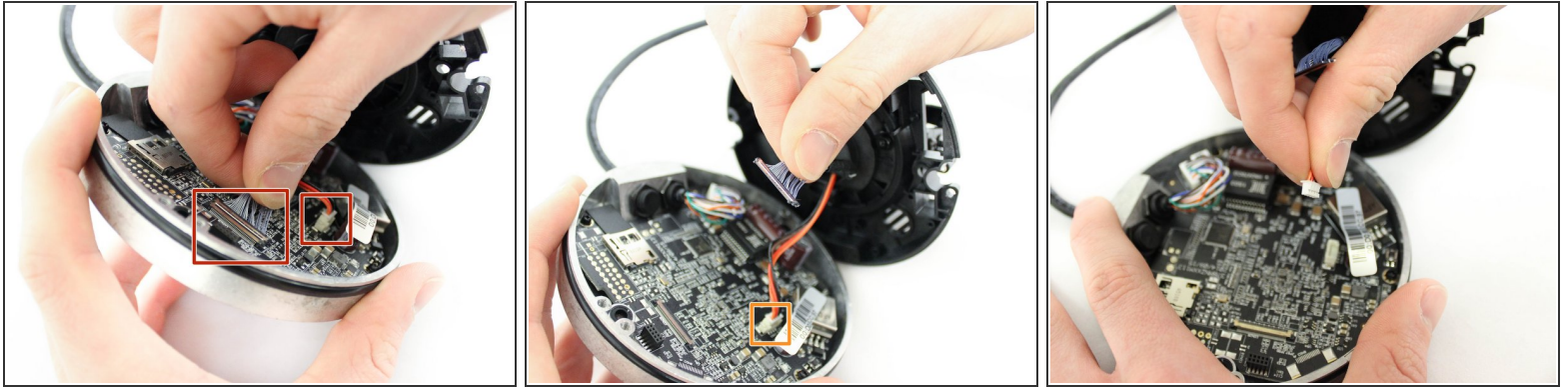
- Pull the IR LED light board gently away from the camera to expose the connecting cable.
- **Firmly but gently** detach the IR LED light board from its cable connector by pulling directly away from the connection port.
- ⓘ A spudger may be used to loosen a stubborn cable connection. Wedge the flat end of the spudger between the connector and the port to ease it off of the port's prongs.

## Step 6 — 4 MP Camera



- Using a PH1 screwdriver, remove the two 8mm screws holding the plastic base to the metal base of the camera.
- ☑ Be sure to keep track of your screws and washers. Using the correct Phillips Head screwdriver will help prevent stripping the screws.
- ⚠ Careful when lifting the plastic base away from the metal base. There are two chords that may be damaged if pulled on.

## Step 7



- Disconnect the two cables from the camera base motherboard by **gently but firmly** pulling directly away from their respective ports.

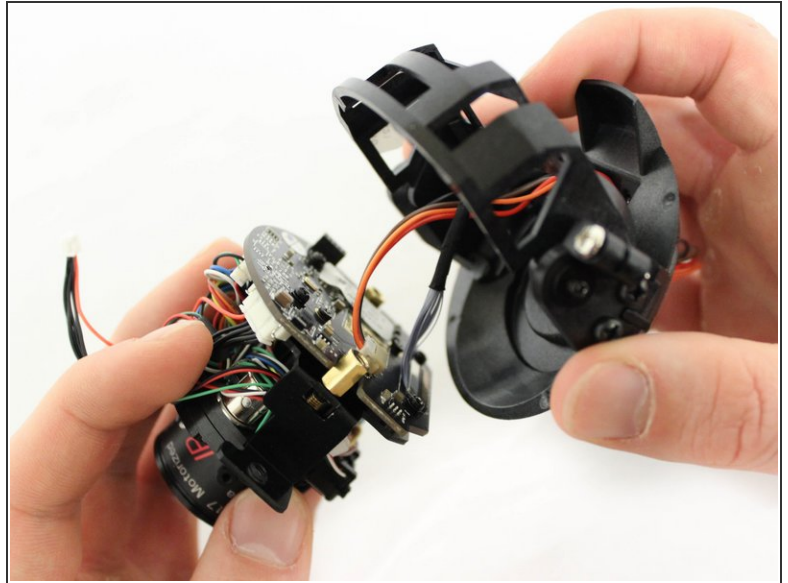
## Step 8



- Remove the three 6mm screws with a PH1 screwdriver. These hold the camera's plastic housing to the plastic part of the camera base.

**⚠ Do not lose the wide washers.** Each of these screws have wide washers to keep the plastic housing in place during assembly.

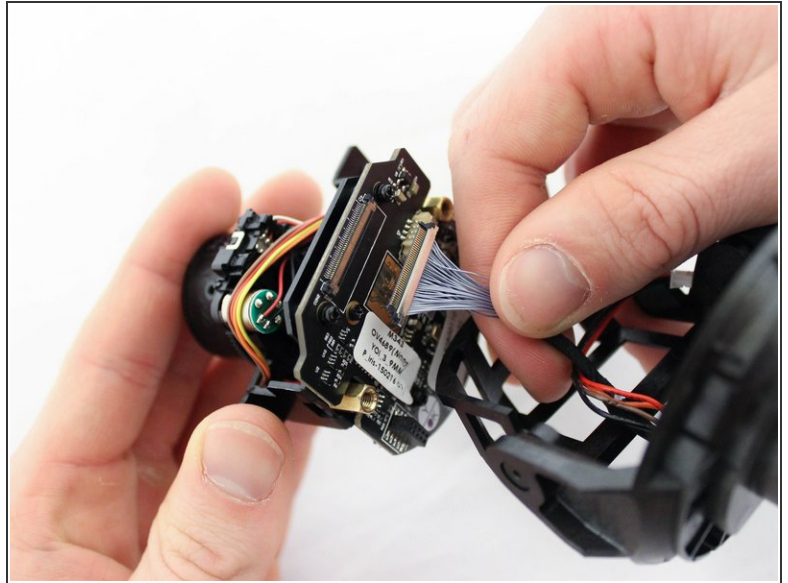
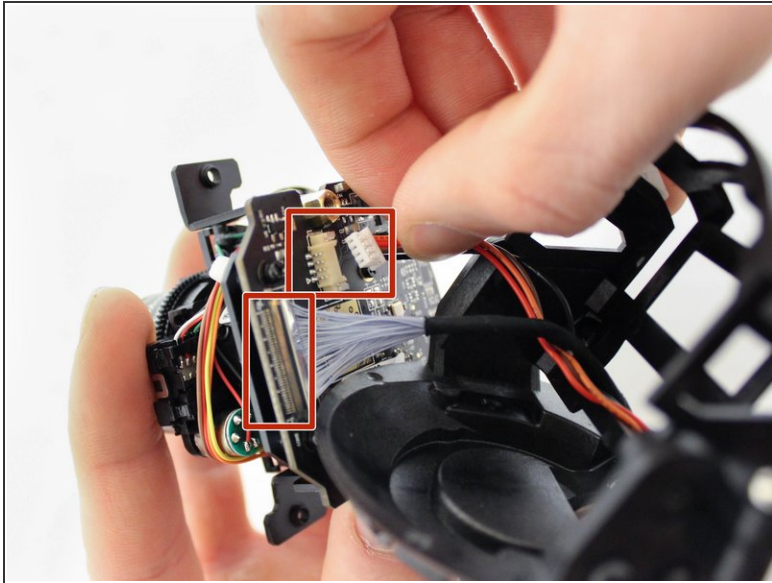
## Step 9



- Gently tilt the camera forward in the cradle of the camera housing to get access to the two 10mm screws.
- Use a PH1 screwdriver to remove the two 10mm screws.
- Pull away the camera housing once the screws have been removed.



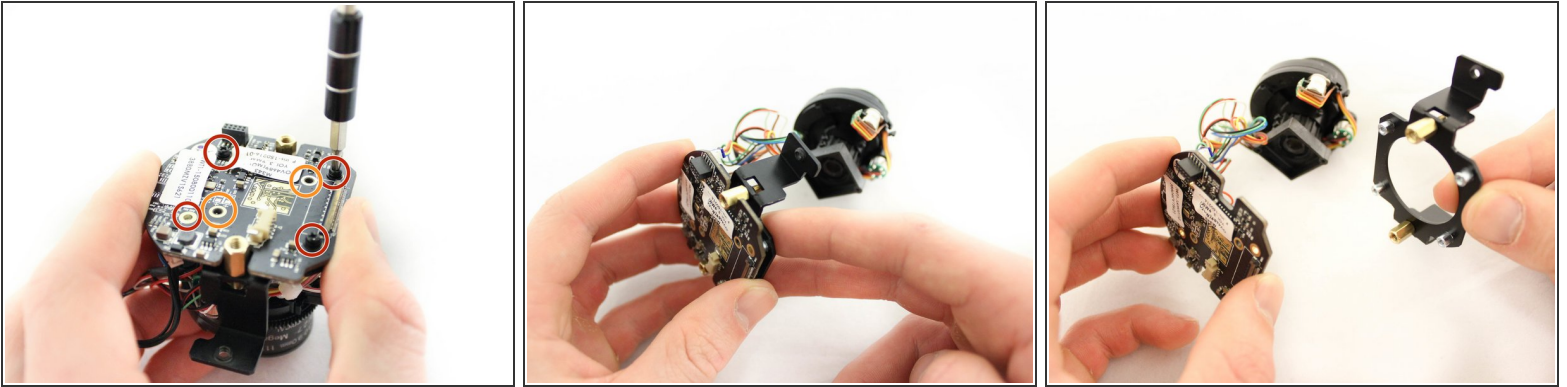
## Step 10



- Remove the two cables **gently but firmly** by pulling directly away from their respective ports.
- ⓘ The camera housing will always stay attached to these cables. They should **not** be removed from this housing.



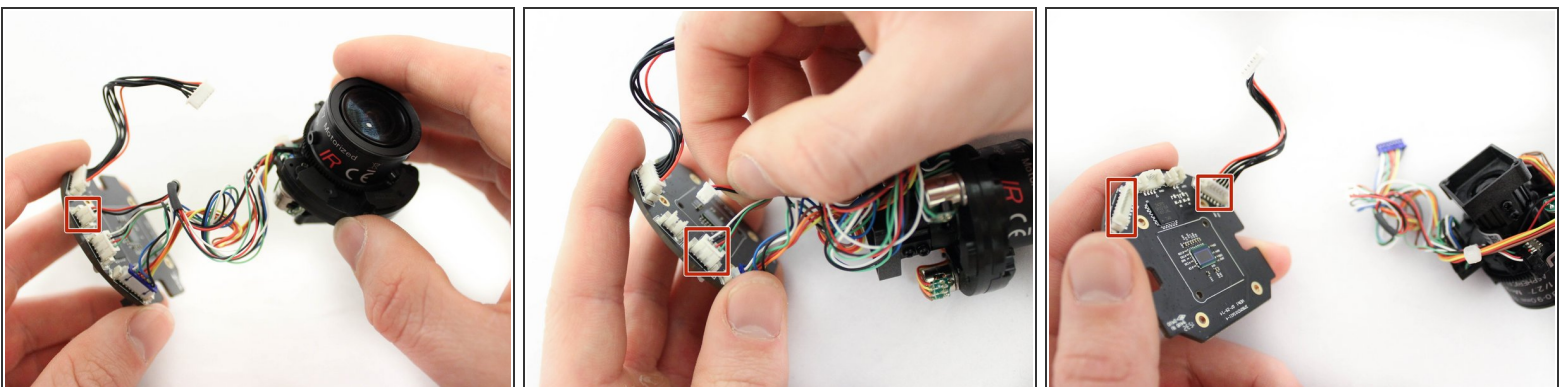
## Step 11 — Motherboard



**⚠ Do not use a magnetic screwdriver or drill bits on the camera's motherboard.** This can damage the camera's motherboard.

- Use a PH000 screwdriver to unscrew the four 4mm screws that hold the motherboard to the motherboard housing. *These will be the raised screws with safety washers.*
- Use a PH000 screwdriver to unscrew the two 3mm screws that hold the motherboard to the camera. *These are smaller screws that have no washers and are not raised.*
- Pull the motherboard mounting away from the motherboard after unscrewing the motherboard from the camera.

## Step 12



- Disconnect the three cables from the motherboard by pulling each one **gently but firmly** away from their respective connections.

**i** All of these cables can safely be removed from the motherboard.

To reassemble your device, follow these instructions in reverse order.