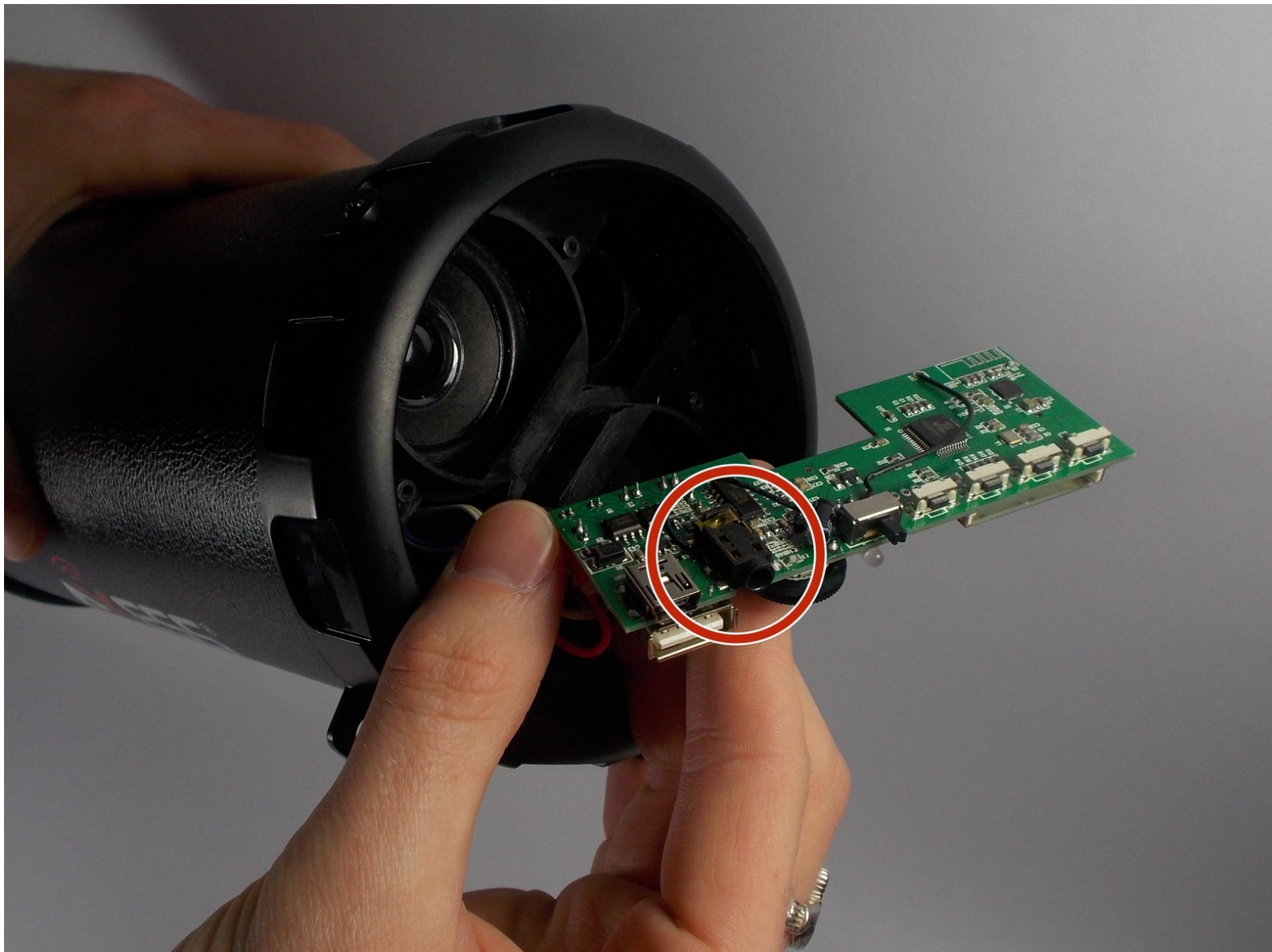




Axess SPBT1031 Auxiliary Port Replacement

This guide will help you replace the auxiliary port inside the speaker.

Written By: Elvira Lou Evangelista



INTRODUCTION

This guide will be helpful for repairing the auxiliary port if the troubleshooting page recommends that you replace the port. This is a necessary step when you have determined no other way to repair your current auxiliary port. Be wary of accidentally damaging other parts of the device when replacing the aux port.



TOOLS:

- [Metal Spudger](#) (1)
- [Tweezers](#) (1)
- [Portable Soldering Iron](#) (1)
- [Desoldering Pump](#) (1)
- [Phillips #1 Screwdriver](#) (1)



PARTS:

- [Replacement Auxillary Port](#) (1)

Step 1 — Red Interface Plate



- Use metal spudger to remove the mesh speaker covers (the side with the buttons) by wedging the narrow end into the center of the outer edge of the mesh, touching the red plate.

Step 2



- Use Phillips head PH1 to remove the four 5mm Phillips Head screws from the red panel (under mesh).

Step 3



- If the screws are difficult to remove, use a pair of tweezers to twist and pick them out.

Step 4



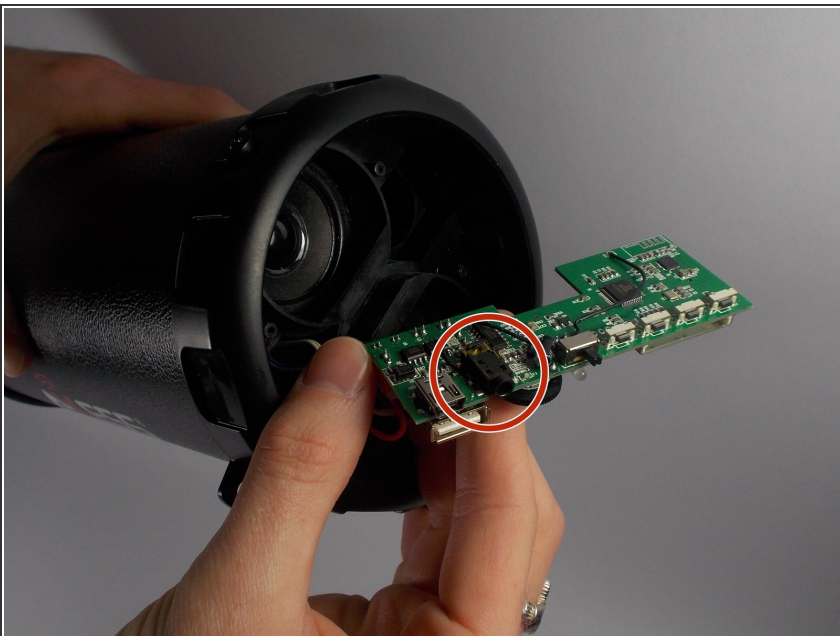
- Separate the red interface plate from the black face plate by pulling them apart.

Step 5 — Auxiliary Port



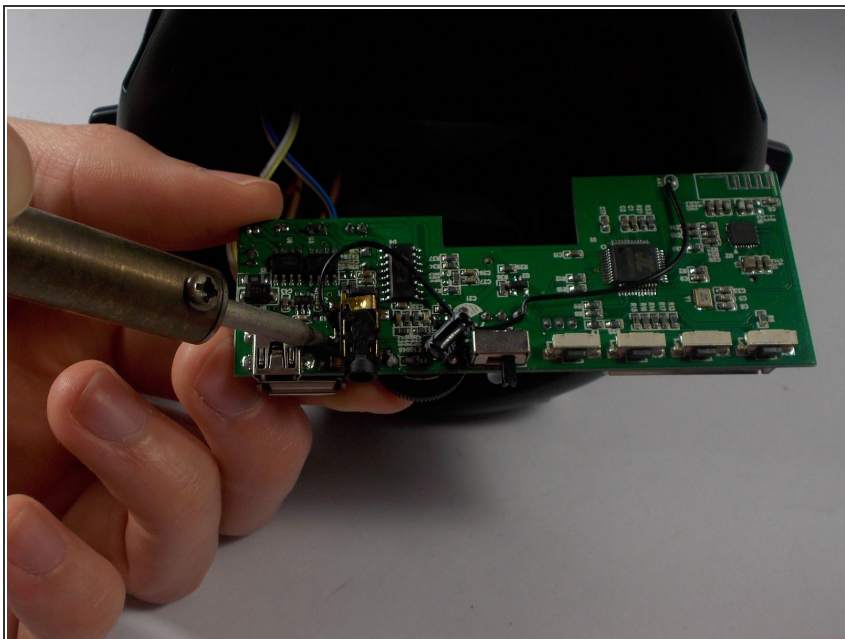
- Take the red plate and the motherboard and pull apart them apart.
- ⚠ Be careful not to damage the motherboard or red plate as you pull them apart.

Step 6



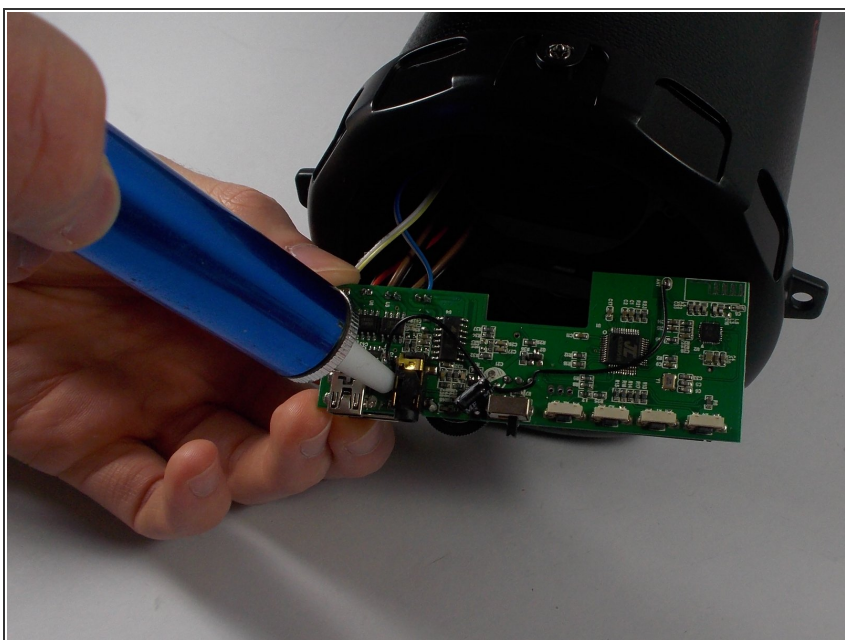
- Locate auxiliary port which is on the left side above USB drive and to the right of the charging port (auxiliary port has a circular front).

Step 7



- In order to remove the port, heat up 5 different solder points using a soldering iron.

Step 8



- Use a desoldering pump to remove the liquefied solder.
- Then pull off the auxiliary port.

To reassemble your device, follow these instructions in reverse order.