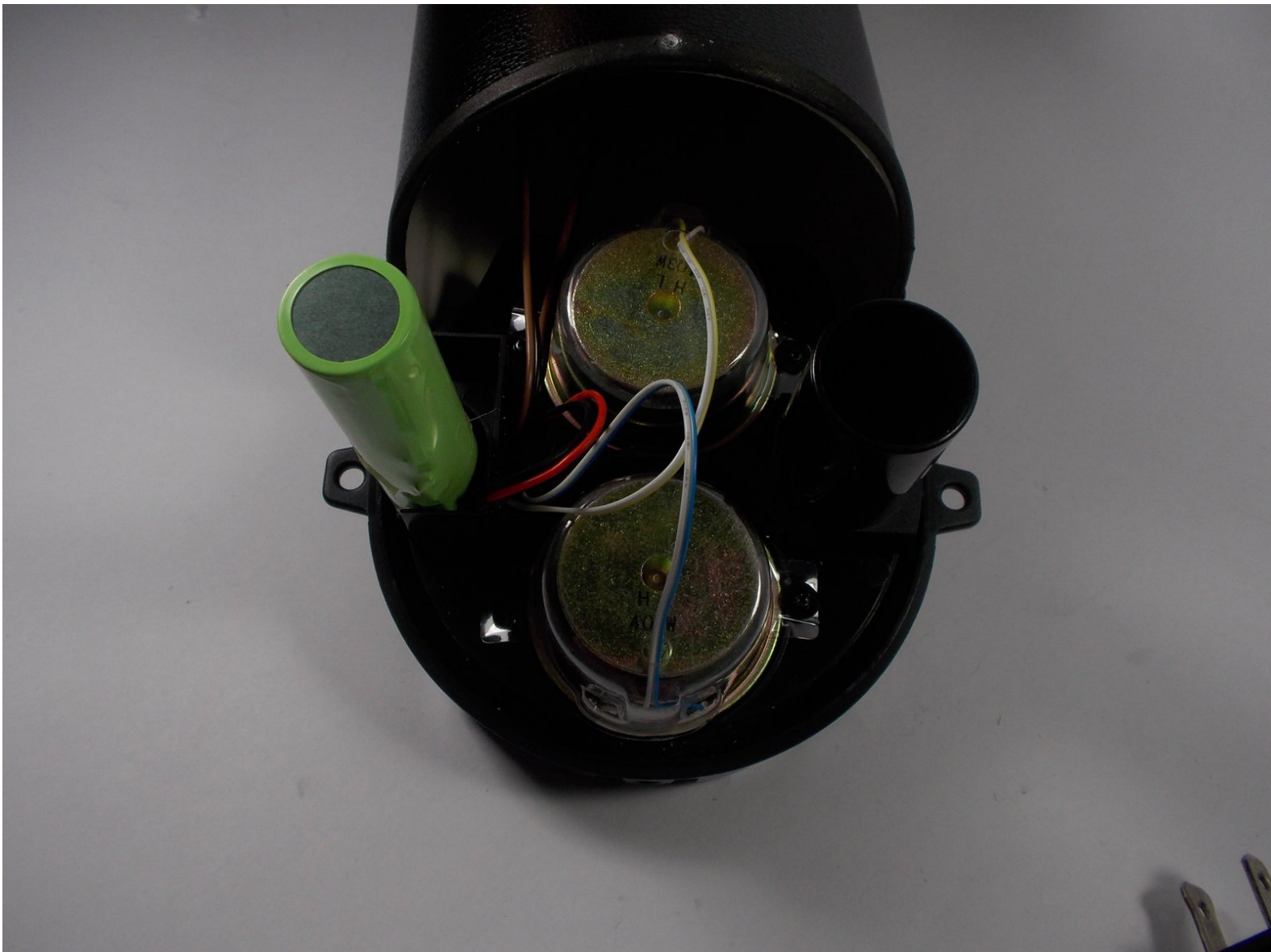




# Axess SPBT1031 Battery Replacement

This guide will help you replace the battery inside the speaker.

Written By: Elvira Lou Evangelista



---

## INTRODUCTION

This guide will be helpful for repairing the battery if the troubleshooting page recommends that you replace the battery. This is a necessary step when you have determined no other way to repair your current battery. Be wary of accidentally damaging other parts of the device when replacing the battery.



### TOOLS:

- [Phillips #1 Screwdriver](#) (1)
  - [Metal Spudger](#) (1)
  - [Tweezers](#) (1)
-

## Step 1 — Red Interface Plate



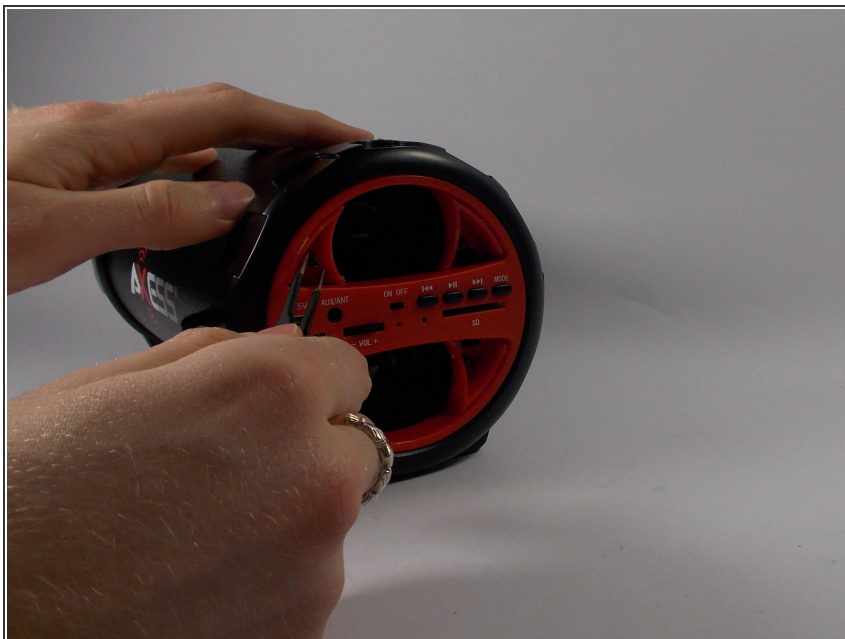
- Use metal spudger to remove the mesh speaker covers (the side with the buttons) by wedging the narrow end into the center of the outer edge of the mesh, touching the red plate.

## Step 2



- Use Phillips head PH1 to remove the four 5mm Phillips Head screws from the red panel (under mesh).

## Step 3



- If the screws are difficult to remove, use a pair of tweezers to twist and pick them out.

## Step 4



- Separate the red interface plate from the black face plate by pulling them apart.



## Step 5 — Black Faceplate



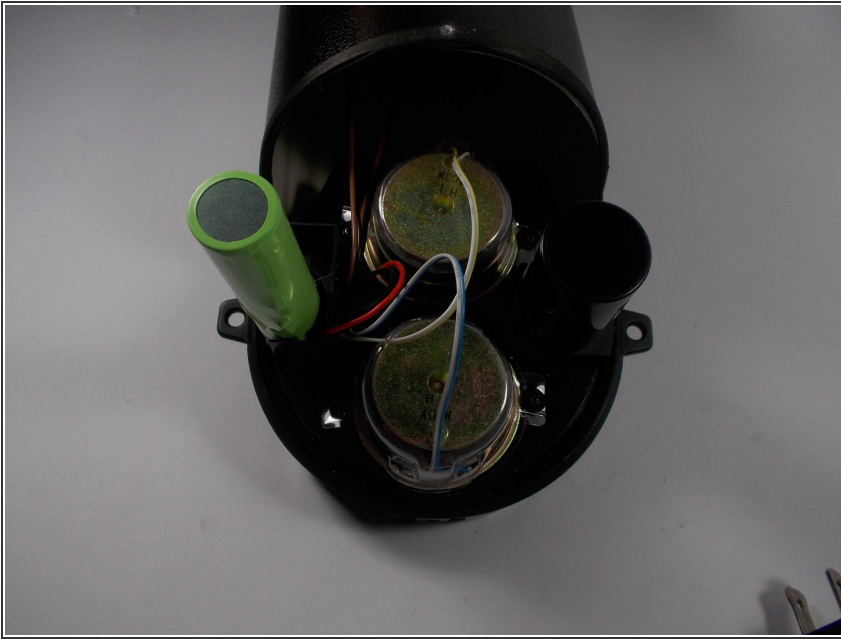
- Look at the side of the speaker that has the red interface plate. Using a Phillips head PH1 screwdriver head, remove screws on the top and bottom of the black face plate. There will be one screw on top and one on the bottom.
- Both screws are 0.55 cm in depth

## Step 6



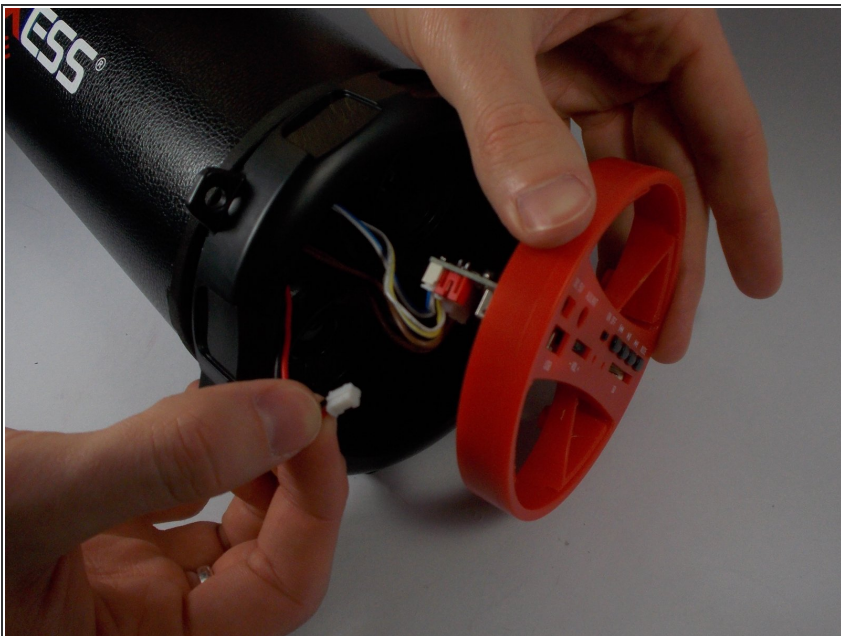
- Separate the black face plate from the tube by pulling them apart.
- ⚠ Be careful when pulling the wires apart or it will potentially damage the wires due to over stretching.

## Step 7 — Battery



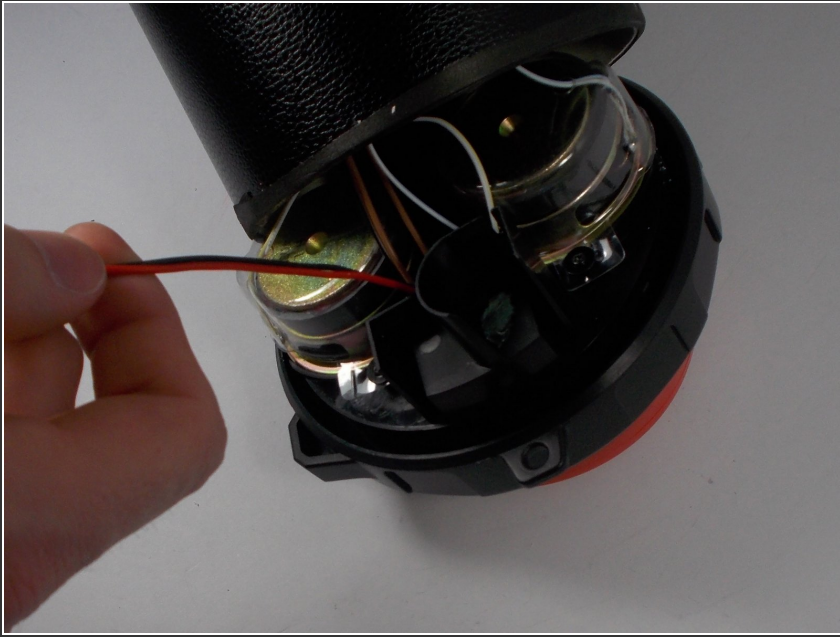
- Look into the back of the black face plate and find the battery which is wrapped in green.
- Battery is glued in place, remove by peeling it off.

## Step 8



- Once the glue is removed, look into the red interface plate and then locate the bottom of the motherboard.
- On the bottom of the motherboard, locate the black and red wire connected to the plastic red socket and remove the white insert from this socket.

## Step 9



- Run the black and red wire in reverse through the hole in the black face plate to remove the battery.
- Remove the battery from the black face plate.

To reassemble your device, follow these instructions in reverse order.