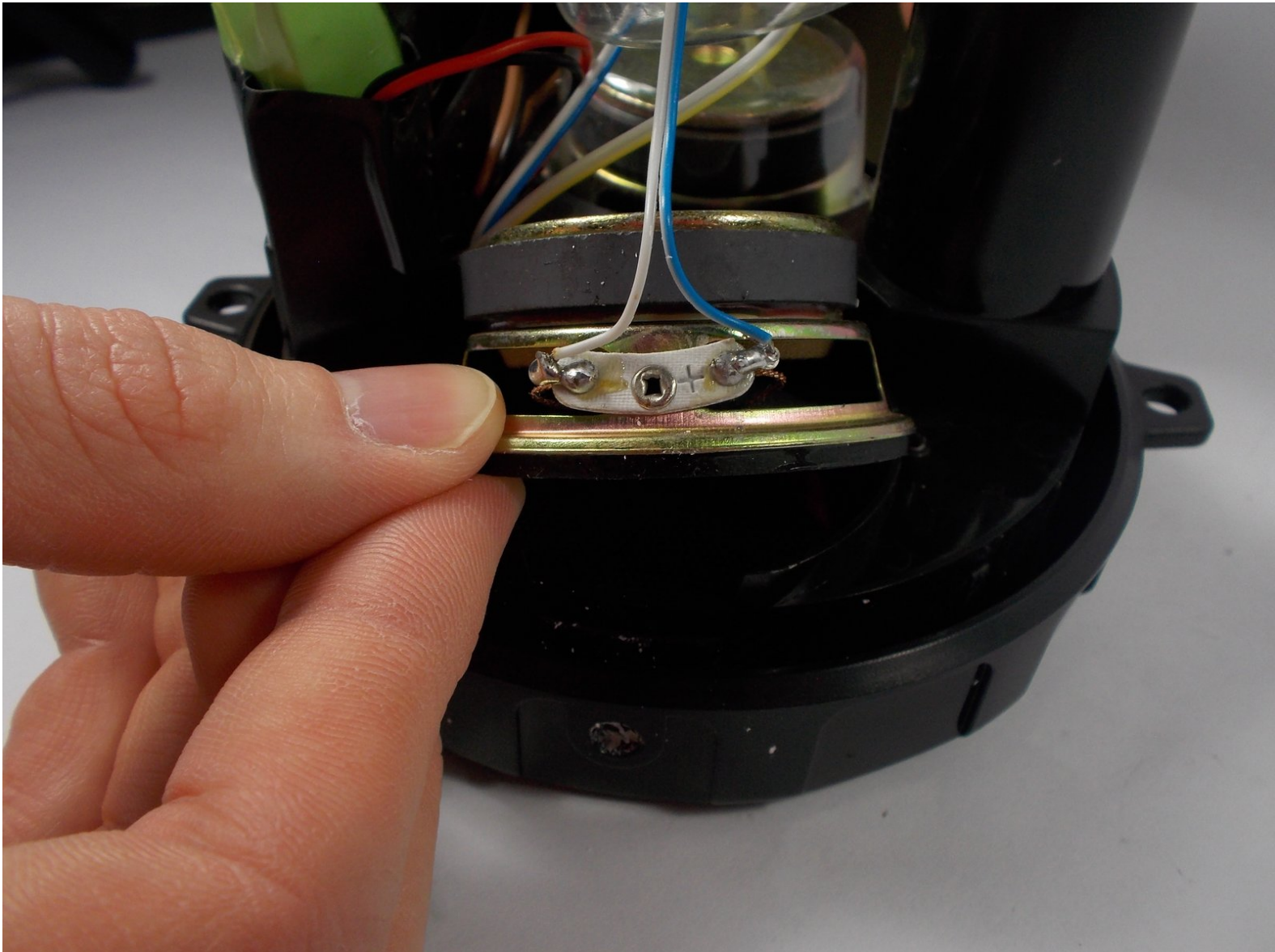




Axess SPBT1031 Speaker (Horns) Replacement

This guide will help you replace the speaker horns inside the speaker.

Written By: Elvira Lou Evangelista



INTRODUCTION

This guide will be helpful for repairing the speaker if the troubleshooting page recommends that you replace it. This is a necessary step when you have determined no other way to repair your current speaker. Be wary of accidentally damaging other parts of the device when replacing the speaker.



TOOLS:

- [Phillips #1 Screwdriver](#) (1)
 - [Portable Soldering Iron](#) (1)
 - [Desoldering Pump](#) (1)
-

Step 1 — Black Faceplate



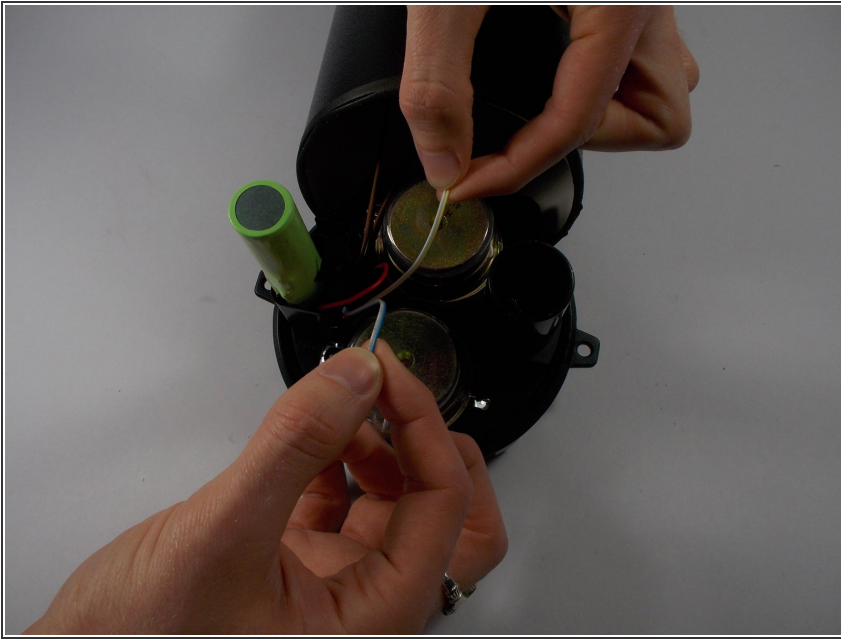
- Look at the side of the speaker that has the red interface plate. Using a Phillips head PH1 screwdriver head, remove screws on the top and bottom of the black face plate. There will be one screw on top and one on the bottom.
- Both screws are 0.55 cm in depth

Step 2



- Separate the black face plate from the tube by pulling them apart.
- ⚠ Be careful when pulling the wires apart or it will potentially damage the wires due to over stretching.

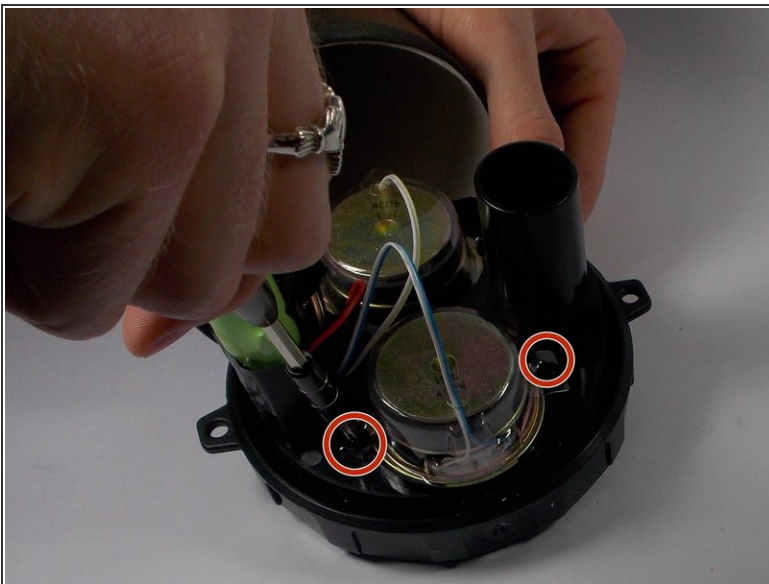
Step 3 — Speaker (Horns)



i By this point you should have determined which speaker needs to be replaced, to figure this out please refer back to the troubleshooting guide.

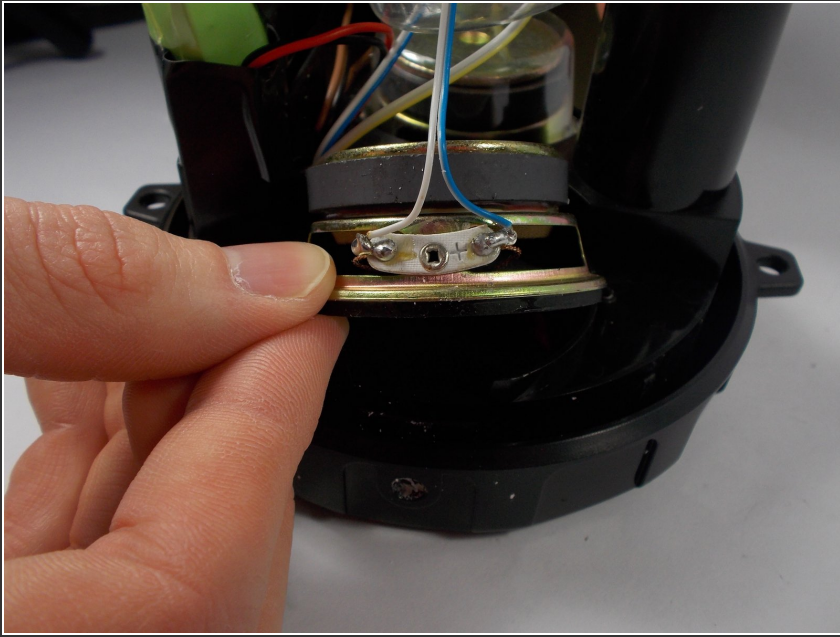
- For the top horn replacement, you will be working with the blue and white wire pair.
- For the bottom horn replacement you with the yellow and white wire pair.

Step 4



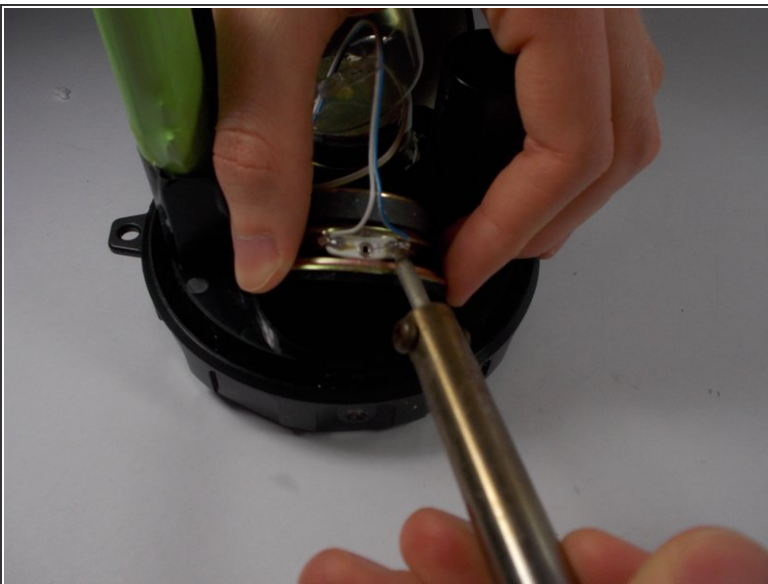
- To remove the plastic coating around the desired horn, look on the back of the black face plate you removed and use the philips head ph1 screwdriver fitting to remove the two 0.3 cm Philips Head screw and washer combos on the left and right of the horn.
- Screw depth of 0.7 cm

Step 5



- Lift the horn from its fitting by pulling it. Position it in a manner that is easy to work with.

Step 6



- Use a soldering iron to heat the two contact points.
- Then use a desoldering pump to remove the liquid solder.

Step 7



- Remove the wires--blue or yellow wire depending on the horn you are replacing--from the old speaker and remove the speaker from the fitting location.
- ★ For the top horn replacement, you will be working with the blue and white wire pair.
- ★ For the bottom horn replacement, you will be working with the yellow and white wire pair.

To reassemble your device, follow these instructions in reverse order.