



Axess SPBT1031 Subwoofer Replacement

This guide will help you replace the subwoofer inside the speaker.

Written By: Elvira Lou Evangelista



INTRODUCTION

This guide will be helpful for repairing the subwoofer if the troubleshooting page recommends that you replace it. This is a necessary step when you have determined no other way to repair your current subwoofer. Be wary of accidentally damaging other parts of the device when replacing the subwoofer.



TOOLS:

- [Metal Spudger](#) (1)
 - [Tweezers](#) (1)
 - [Desoldering Pump](#) (1)
 - [Phillips #1 Screwdriver](#) (1)
-

Step 1 — Subwoofer



- Look at the side of the speaker without the red interface plate, there will be a red ring around the mesh but no buttons on the side.
- Use a Phillips head PH1 screwdriver and remove the one 0.55 cm from the top and one from the bottom of the black face plate, (do not remove plate yet).

Step 2



- Use a metal spudger to remove the mesh speaker cover by wedging the narrow end into the center of the outer edge of the mesh touching the red plate.

Step 3



- Use Phillips head ph1 to remove four 0.55 cm from the red panel (under mesh).
- *Note: For subwoofer replacement there will be 4 screws to remove and four bolts as well. The bolts are used for alignment and cannot be removed, locate the screws and remove.*
- The Screws will have 0.7cm in depth

Step 4



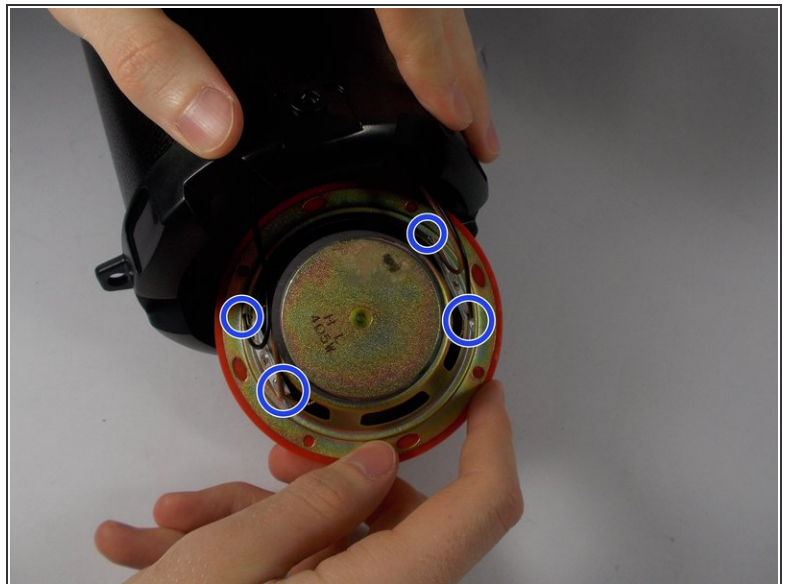
- If the screws are difficult to remove, use the tweezers to twist and pick them out.

Step 5



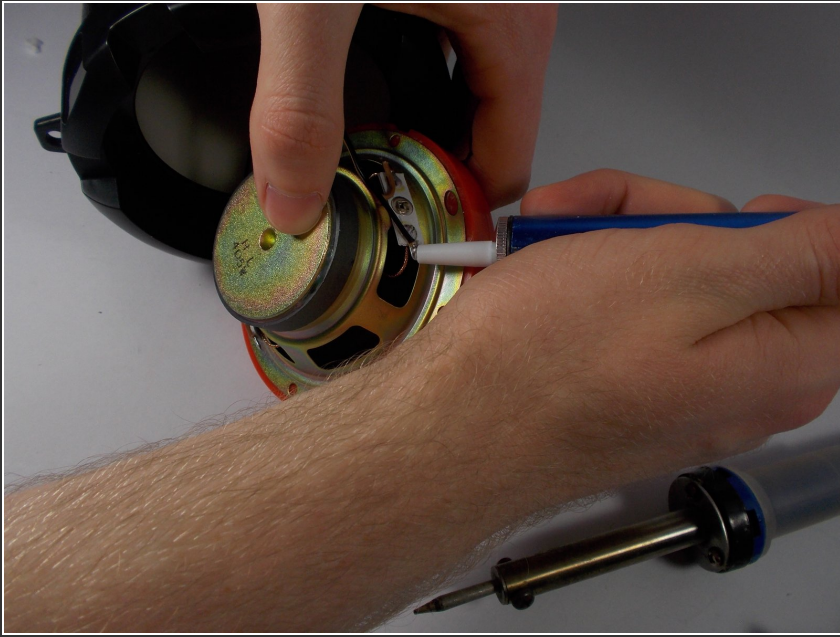
- Separate the red plate from the black face plate by removing the black plate from the tube and pushing on the inside of the subwoofer.
- ⚠ Be careful not to damage the black face plate or red plate as you pull them apart.
- You may place the black faceplate back on the tube, but do not screw it back in yet.

Step 6



- To remove the the wires from the subwoofer terminals, use a soldering iron to reheat the solder at each of the four points of connection.

Step 7



- Use a desoldering pump to remove the liquid solder from the terminals.

Step 8



- Remove the old subwoofer.
- ★ **REMEMBER** to connect the brown wires to the positive terminals and the black ones to the negative terminals when re-soldering.

To reassemble your device, follow these instructions in reverse order.