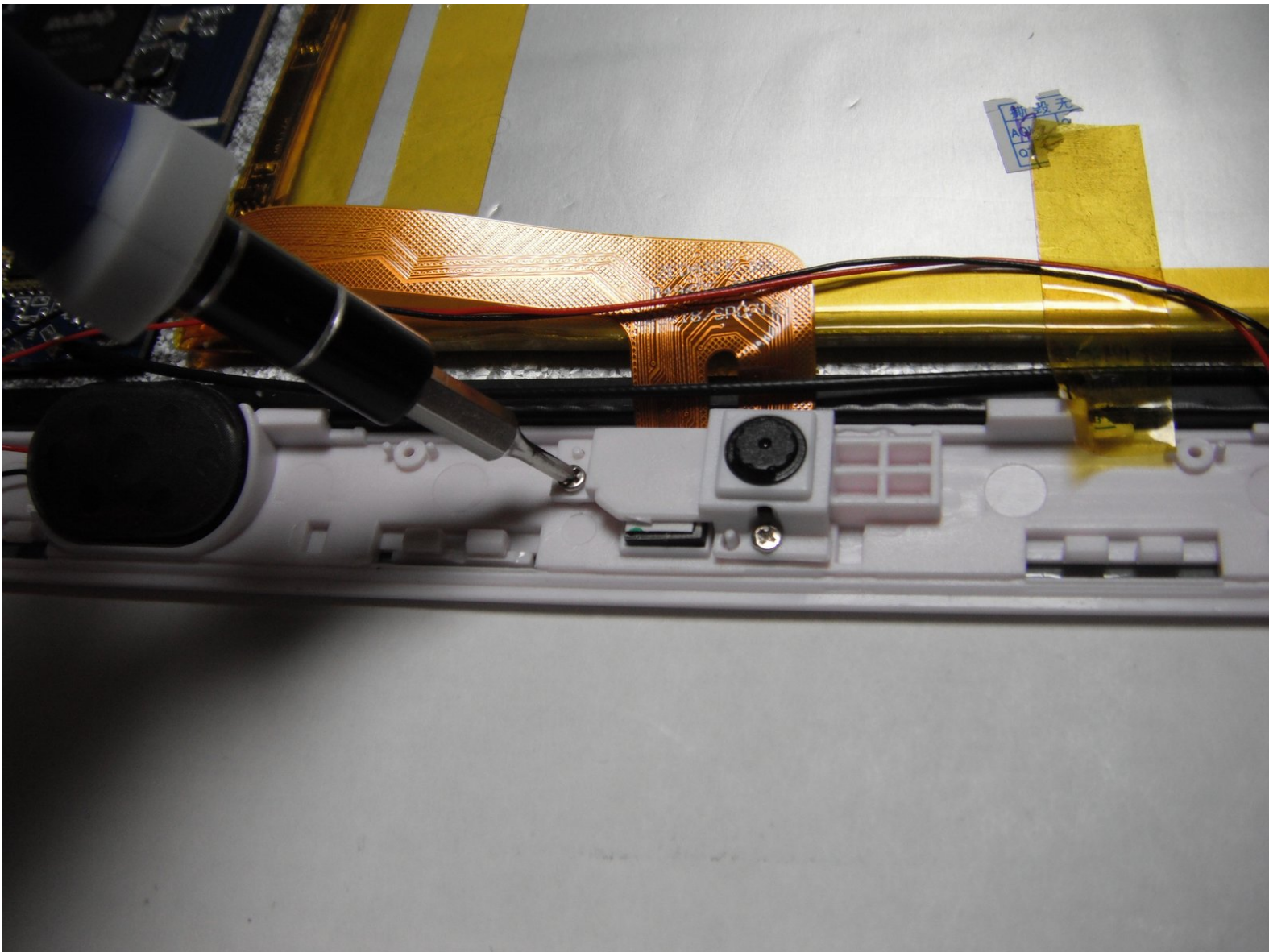




# Axess TA2513-10WT Camera Replacement

This guide will teach you how to isolate and remove both the front and rear cameras for the Axess TA2513-10WT Tablet.

Written By: Steven Kavanagh



---

## INTRODUCTION

This tablet has 2 cameras that possess components that reside in a similar place, and can be accessed with a few steps.



### TOOLS:

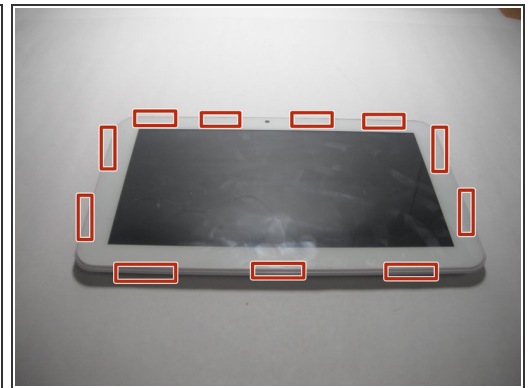
- [Magnetic Phillips Screwdriver](#) (1)
  - [Detailing Brush](#) (1)
  - [Tweezers](#) (1)
  - [iFixit Opening Tools](#) (1)
  - [Spudger](#) (1)
-

## Step 1 — Back Cover



- Lay the tablet down on a flat surface with the screen facing up, and the external camera facing upwards and closest to you.

## Step 2



- Insert the plastic opening tool in the space between the screen and the back cover above the volume buttons.
  - Slide the plastic opening tool gently along the sides.
- i** If a small gap is not created between the screen and the back cover, pry gently upward at each of these latching points.

## Step 3



- Place the spudger in an open space to keep the back case from shutting while you continue to slide the opening tool.

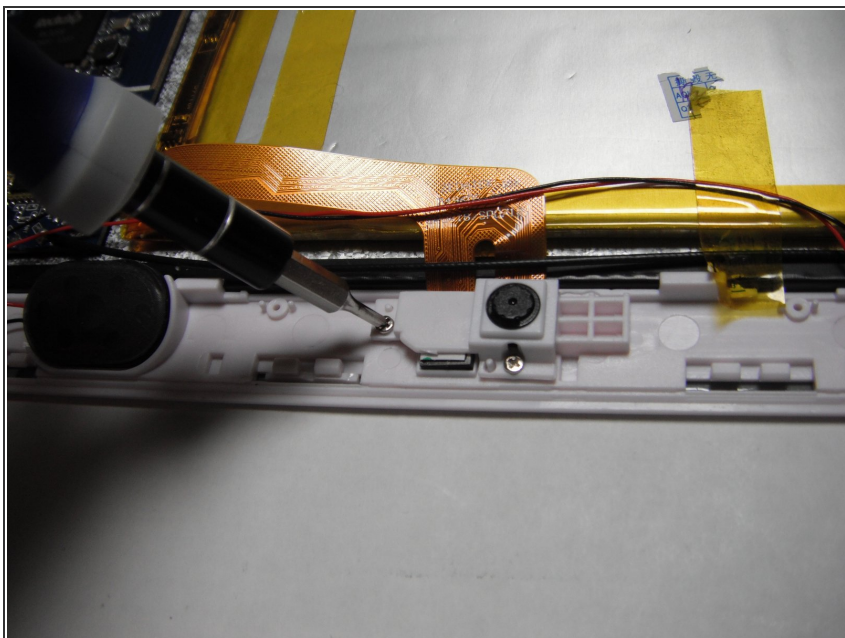


## Step 4



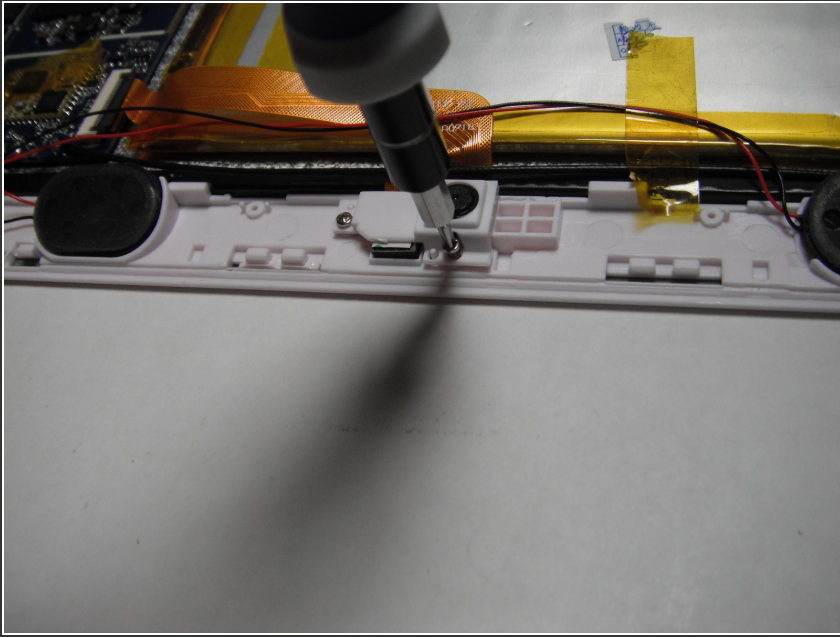
- Remove the back cover with your hands once all points have been unlatched. It should separate completely from the screen that contains the battery and chip components.

## Step 5 — Camera



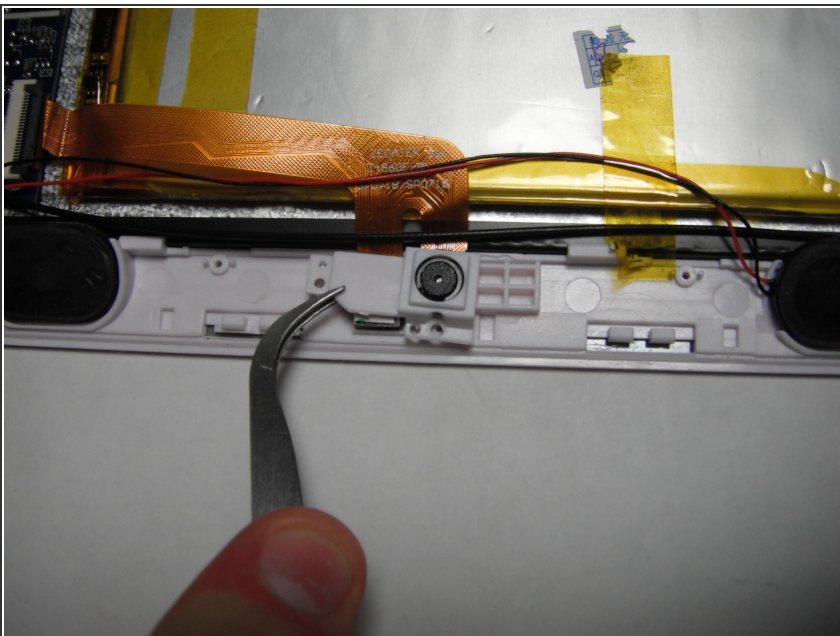
- Remove the left screw of the plastic camera casing using the magnetic screwdriver.

## Step 6



- Remove the bottom screw of the plastic camera casing with the magnetic screwdriver.

## Step 7



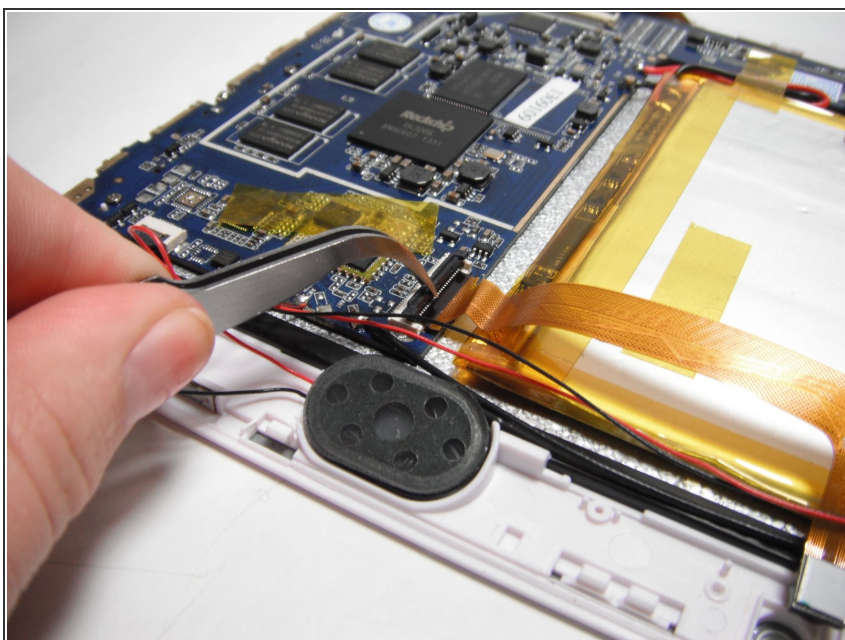
- Remove the entire plastic cover using either tweezers or your fingers.

## Step 8



- Brush the surfaces of the cameras to remove any debris that is present.

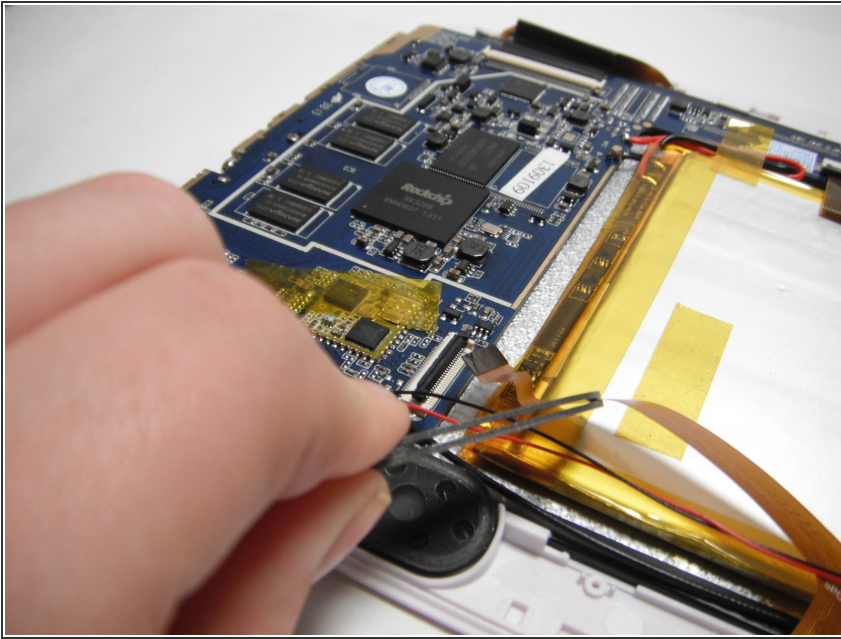
## Step 9



- Grasp the black plastic cover that is attached to the ribbon cable, and rotate it 90 degrees upwards using the tweezers.



## Step 10



- Remove the ribbon cable from the port.

To reassemble your device, follow these instructions in reverse order.