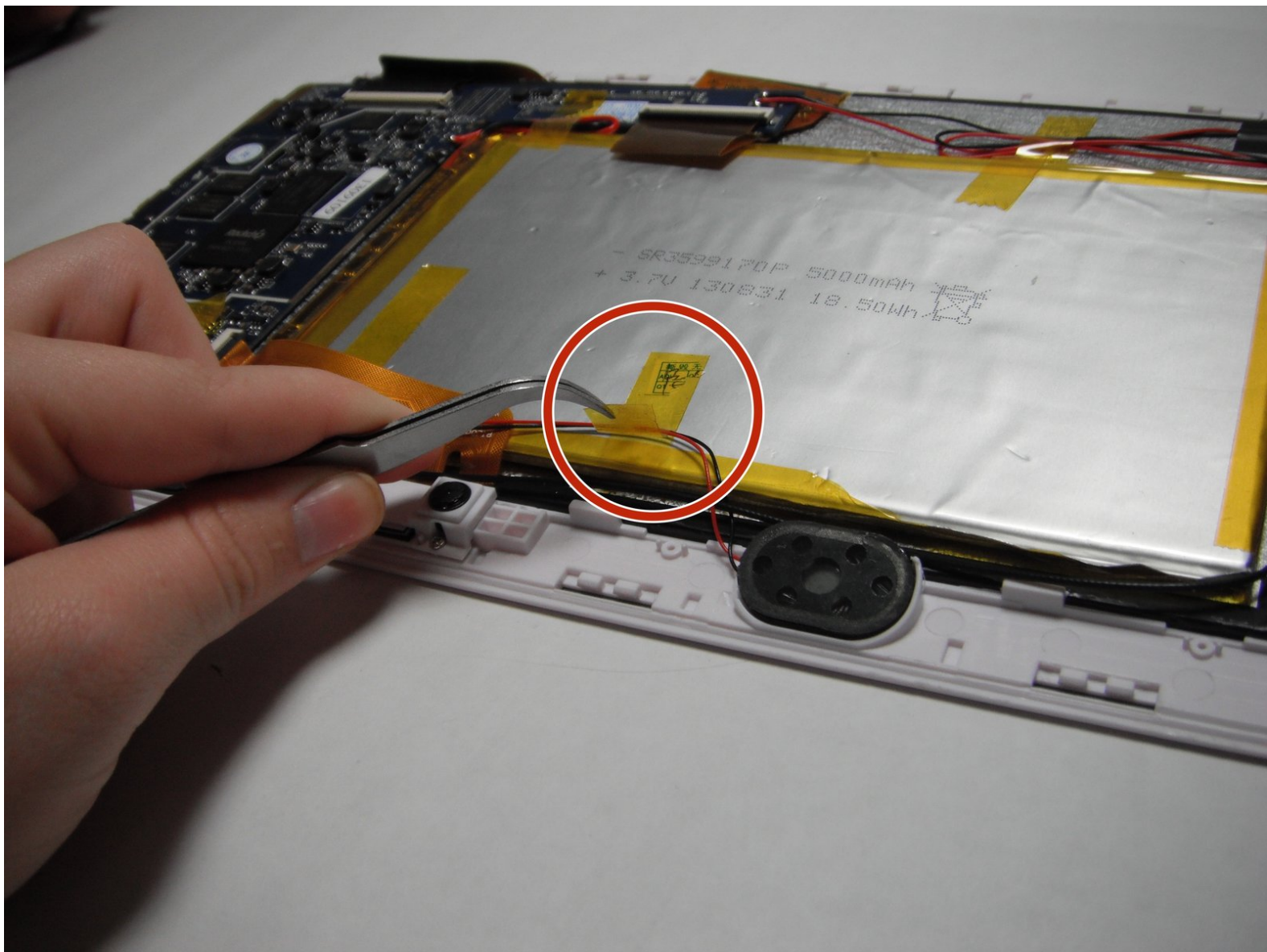




Axess TA2513-10WT Speaker Replacement

This guide will teach you how to remove and replace both speakers in the Axess TA2513-10WT Tablet.

Written By: Steven Kavanagh



INTRODUCTION

In this guide you will find steps on how to remove the speakers from the Axess TA2513-10WT tablet in order to replace them. The guide will show you how to access the tablet's circuit board, identify the right and left speakers, and how to remove the speakers from the circuit board.



TOOLS:

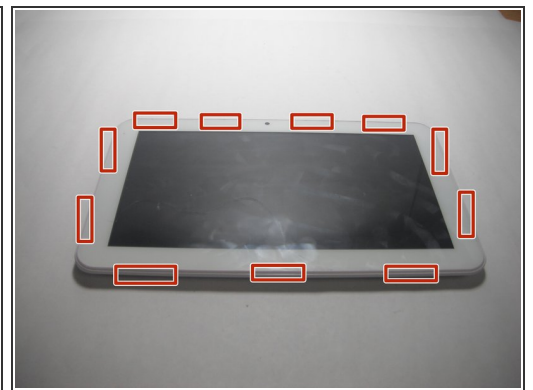
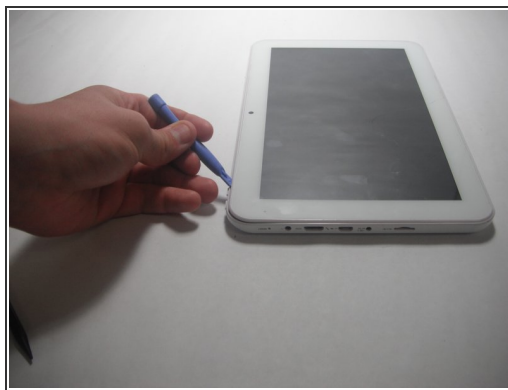
- [Portable Soldering Iron](#) (1)
 - [Tweezers](#) (1)
-

Step 1 — Back Cover



- Lay the tablet down on a flat surface with the screen facing up, and the external camera facing upwards and closest to you.

Step 2



- Insert the plastic opening tool in the space between the screen and the back cover above the volume buttons.
 - Slide the plastic opening tool gently along the sides.
- i** If a small gap is not created between the screen and the back cover, pry gently upward at each of these latching points.

Step 3



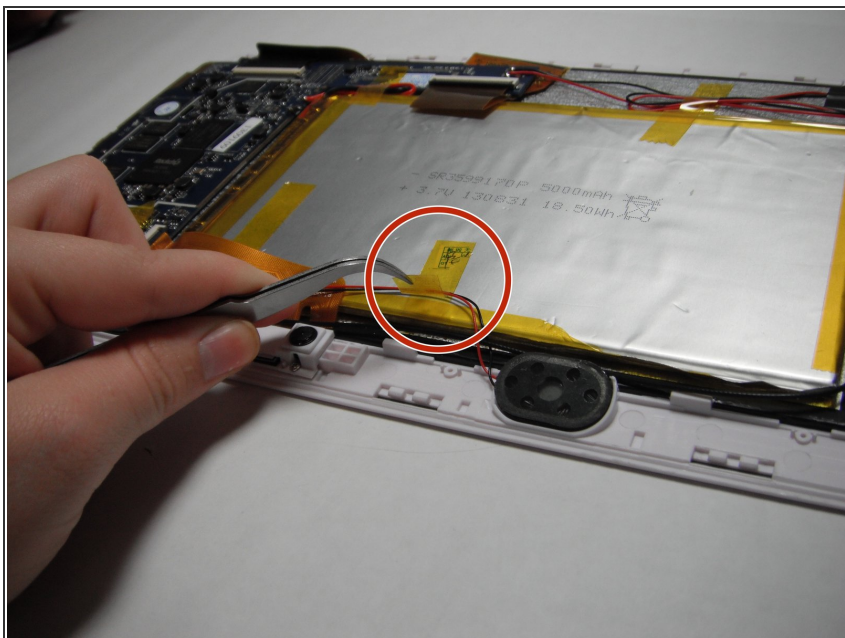
- Place the spudger in an open space to keep the back case from shutting while you continue to slide the opening tool.

Step 4



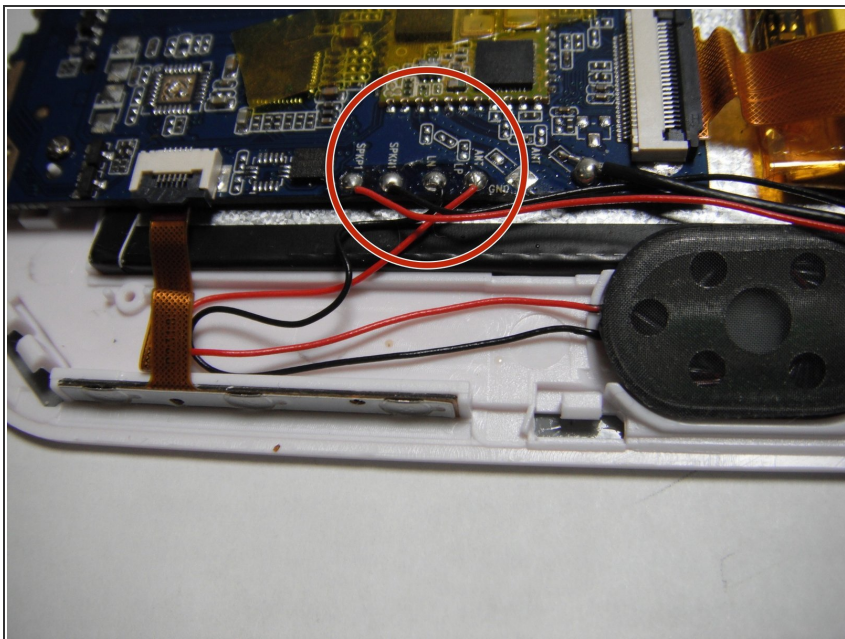
- Remove the back cover with your hands once all points have been unlatched. It should separate completely from the screen that contains the battery and chip components.

Step 5 — Speaker



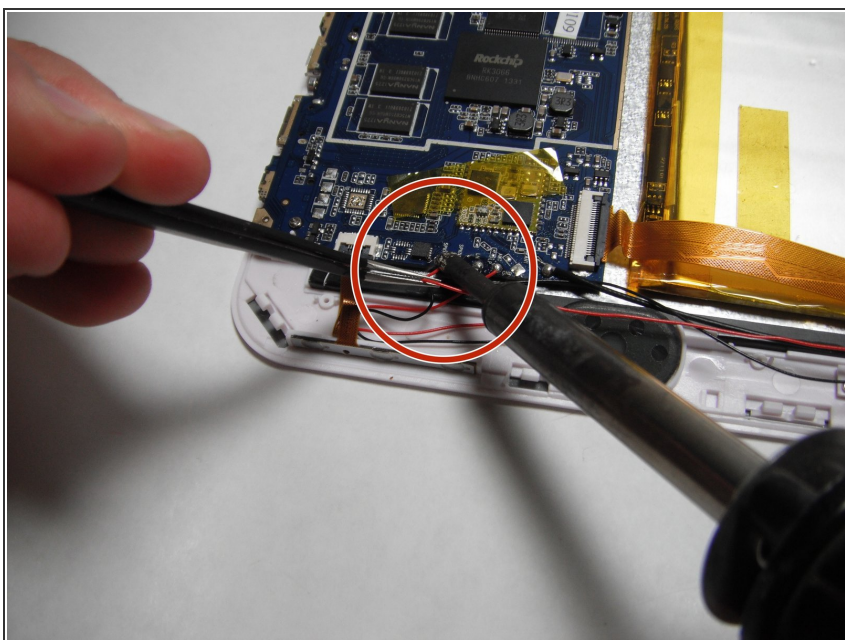
- Remove tape attached to black and red speaker wires.

Step 6



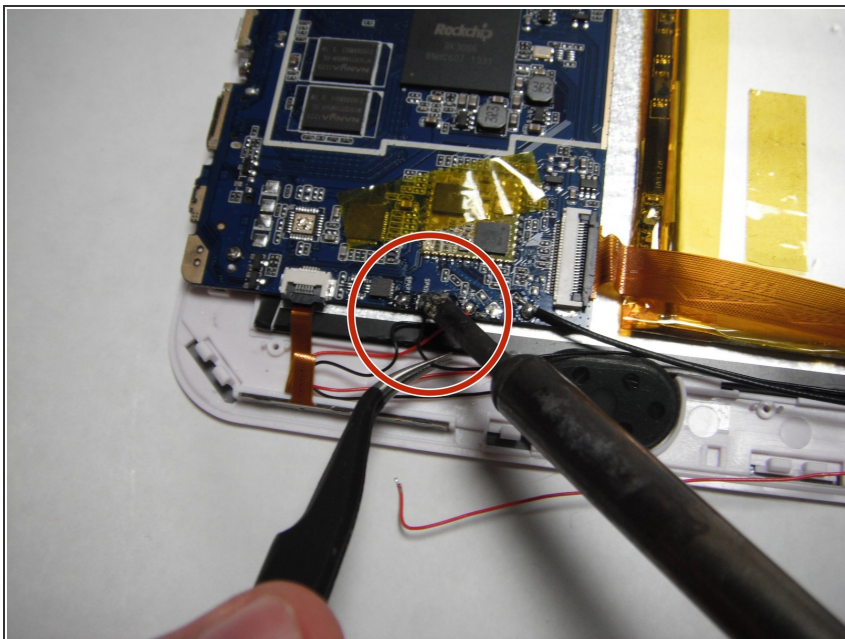
- Identify the four speaker nodes.
- ① From left to right the nodes are "SPKP1", "SPKN1", "LN", and "LP"

Step 7



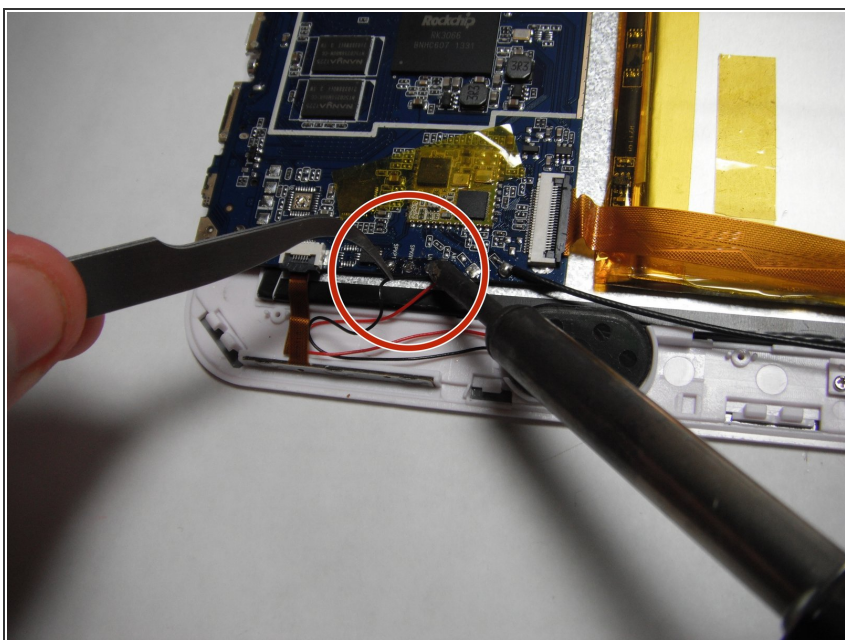
- Place the soldering tool on the speaker node labeled "SPKP1" and quickly remove the red wire with tweezers.

Step 8



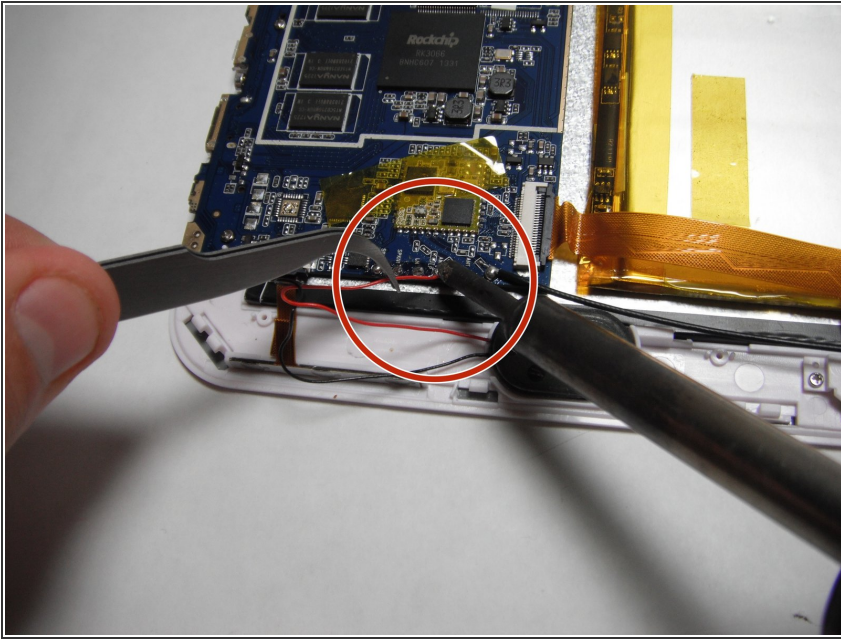
- Place the soldering tool on the speaker node labeled "SPKN1" and quickly remove the black wire with tweezers.

Step 9



- Place the soldering tool on the speaker node labeled "LP" and quickly remove the black wire with the tweezers.

Step 10



- Place the soldering tool on the speaker node labeled "LN" and quickly remove the red wire with tweezers.

To reassemble your device, follow these instructions in reverse order.