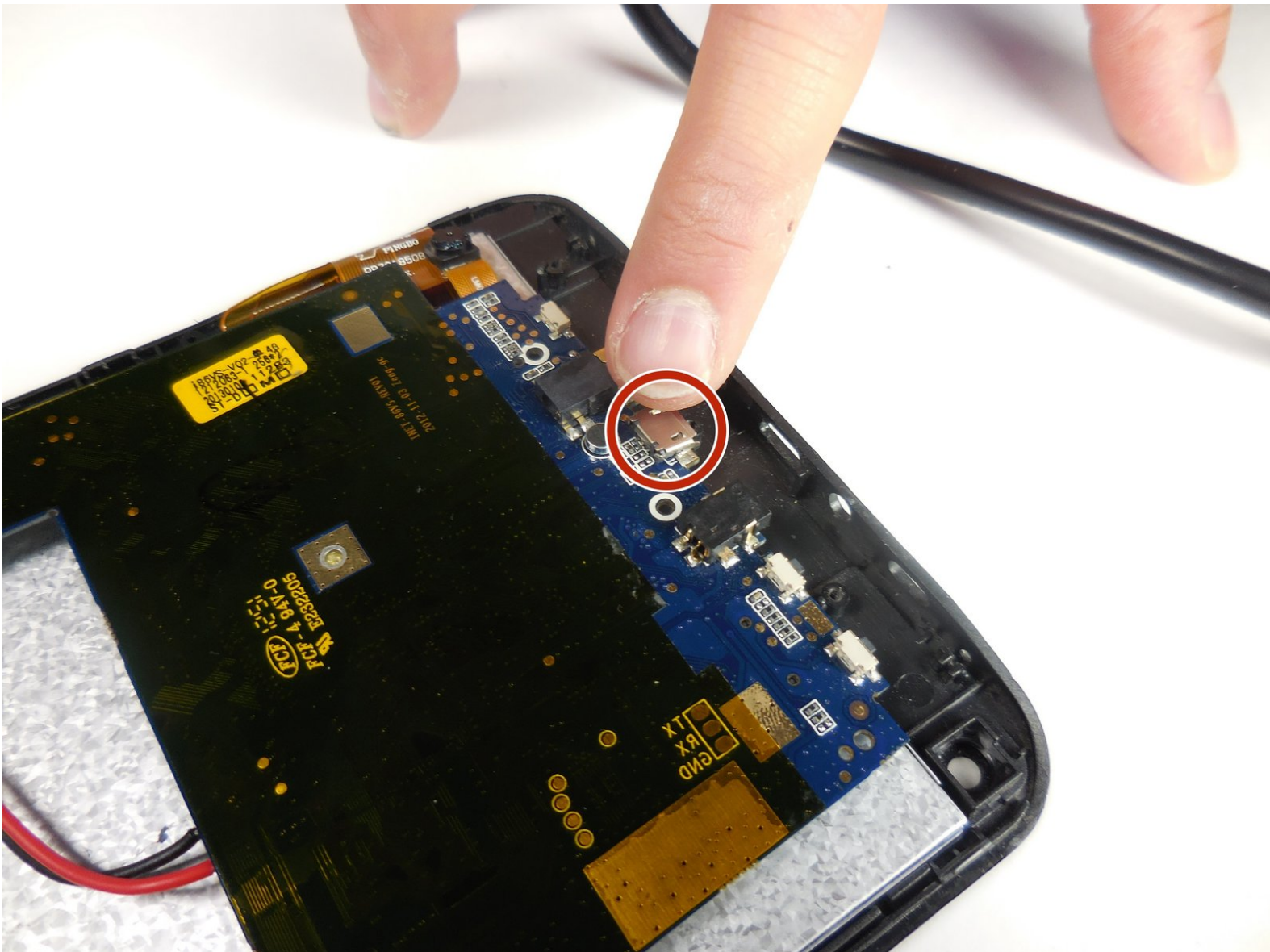




Azpen A701 Charger Port Replacement

This guide walks you through replacing the charger port.

Written By: Michael



INTRODUCTION

The charger port is located on the motherboard (the blue L-shaped piece) at the bottom of the device. In order to replace the port, a soldering kit is needed. Be sure you have all the necessary tools and safety equipment on hand before starting.

A guide to soldering can be found on iFixit's website [here](#).



TOOLS:

- [Phillips #00 Screwdriver](#) (1)
 - [Spudger](#) (1)
 - [Soldering Workstation](#) (1)
 - [Tweezers](#) (1)
-

Step 1 — General Disassembly Prerequisite Guide



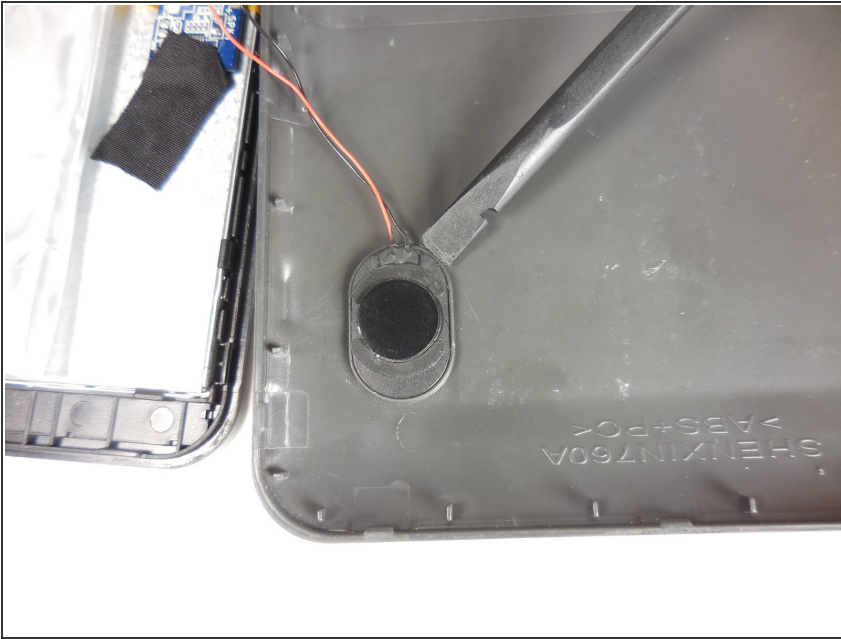
- Remove the two 2cm screws on the bottom using the PH0 Phillips head screw driver.

Step 2



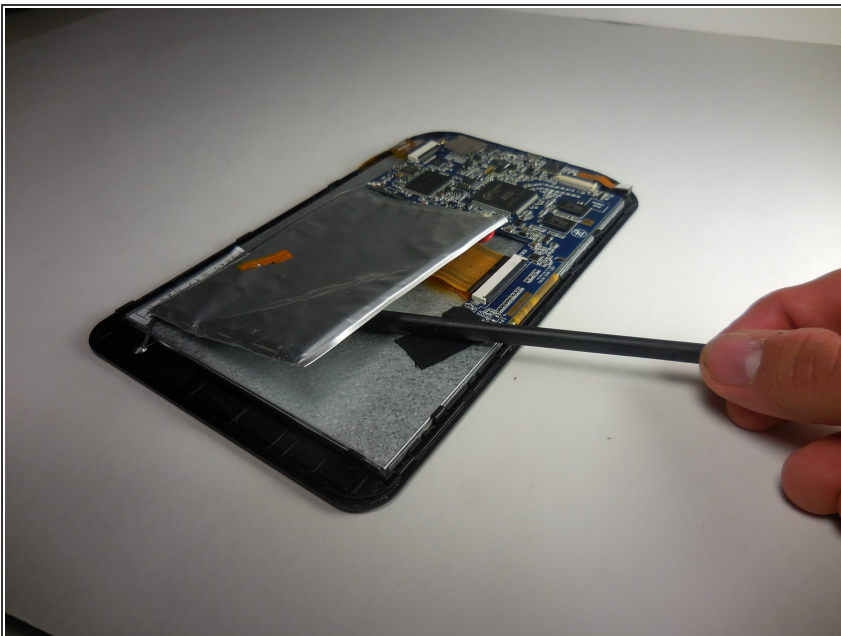
- Pry open back piece with plastic spudger.
 - Remove the back piece of the device.
- i** The back panel may be difficult to pry off, use gentle force.

Step 3



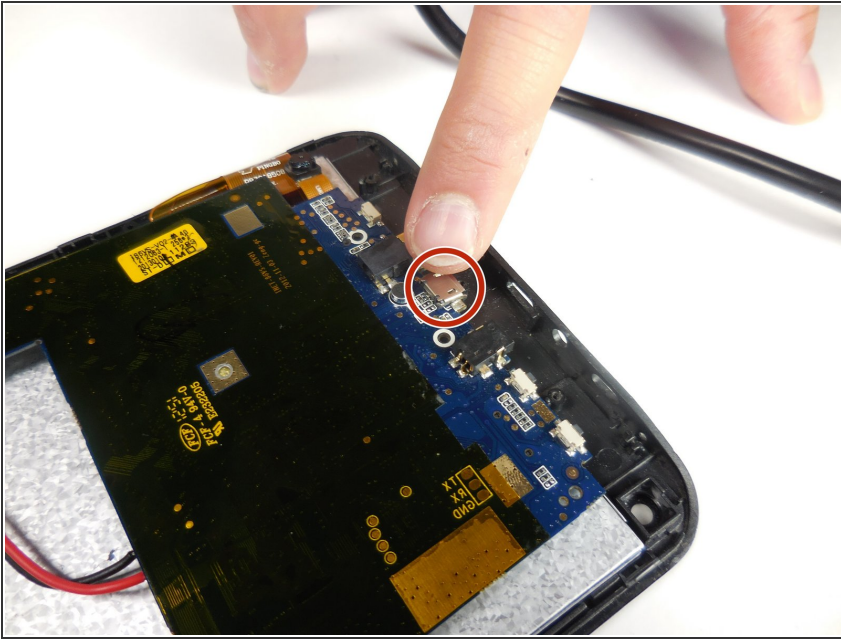
- Disconnect speaker (which is attached by black and red wires) from back piece using plastic spudger.

Step 4



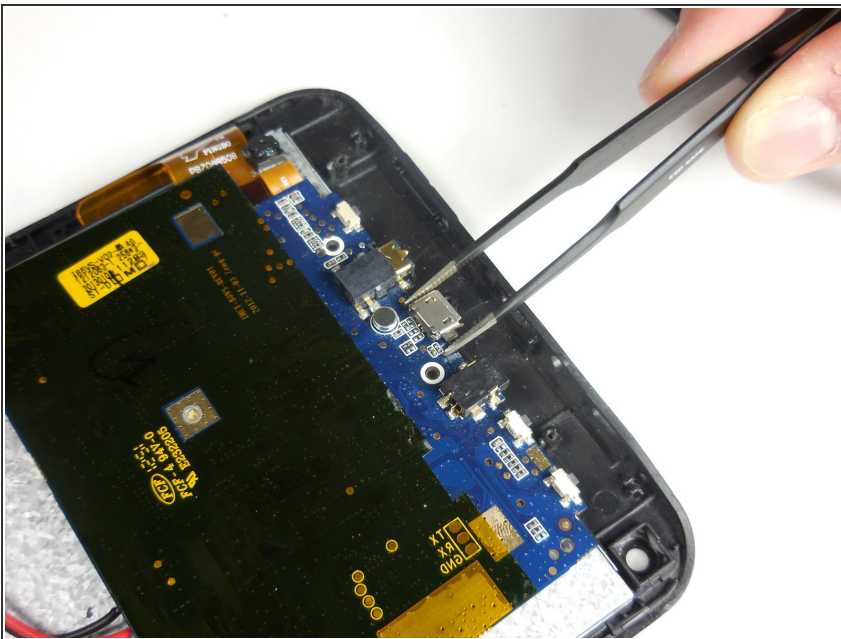
- Gently pry the battery off of the device with the plastic spudger.
- ⓘ There is a large amount of glue holding the battery to the device.
- ⚠ Do not puncture the battery with the plastic spudger.

Step 5 — Charger Port



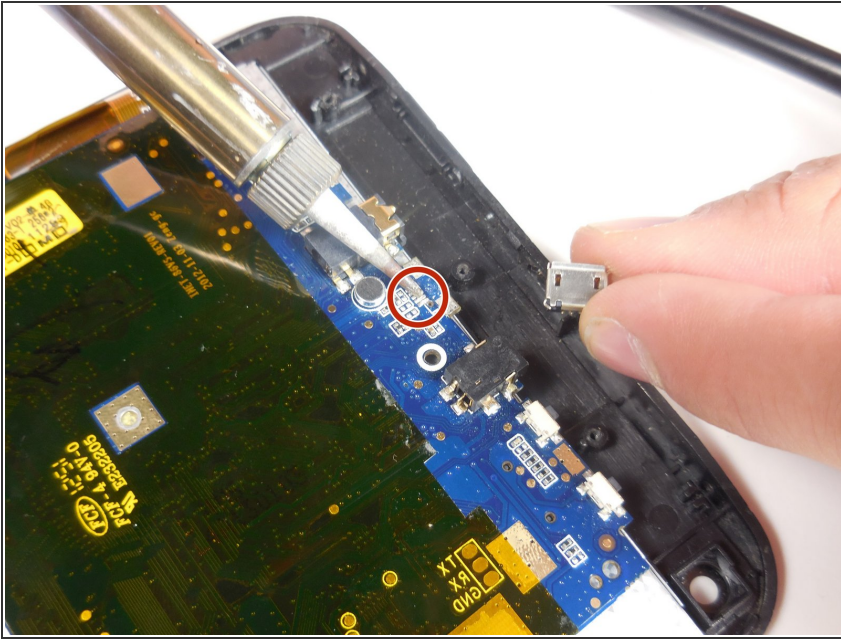
- The charger port is located on the underside of the motherboard (as pictured).

Step 6



- Remove the charger port by using tweezers and gently pulling.

Step 7



- Solder and place new charger port.

To reassemble your device, snap back piece on to the front piece and screw in both 2cm screws at the bottom.