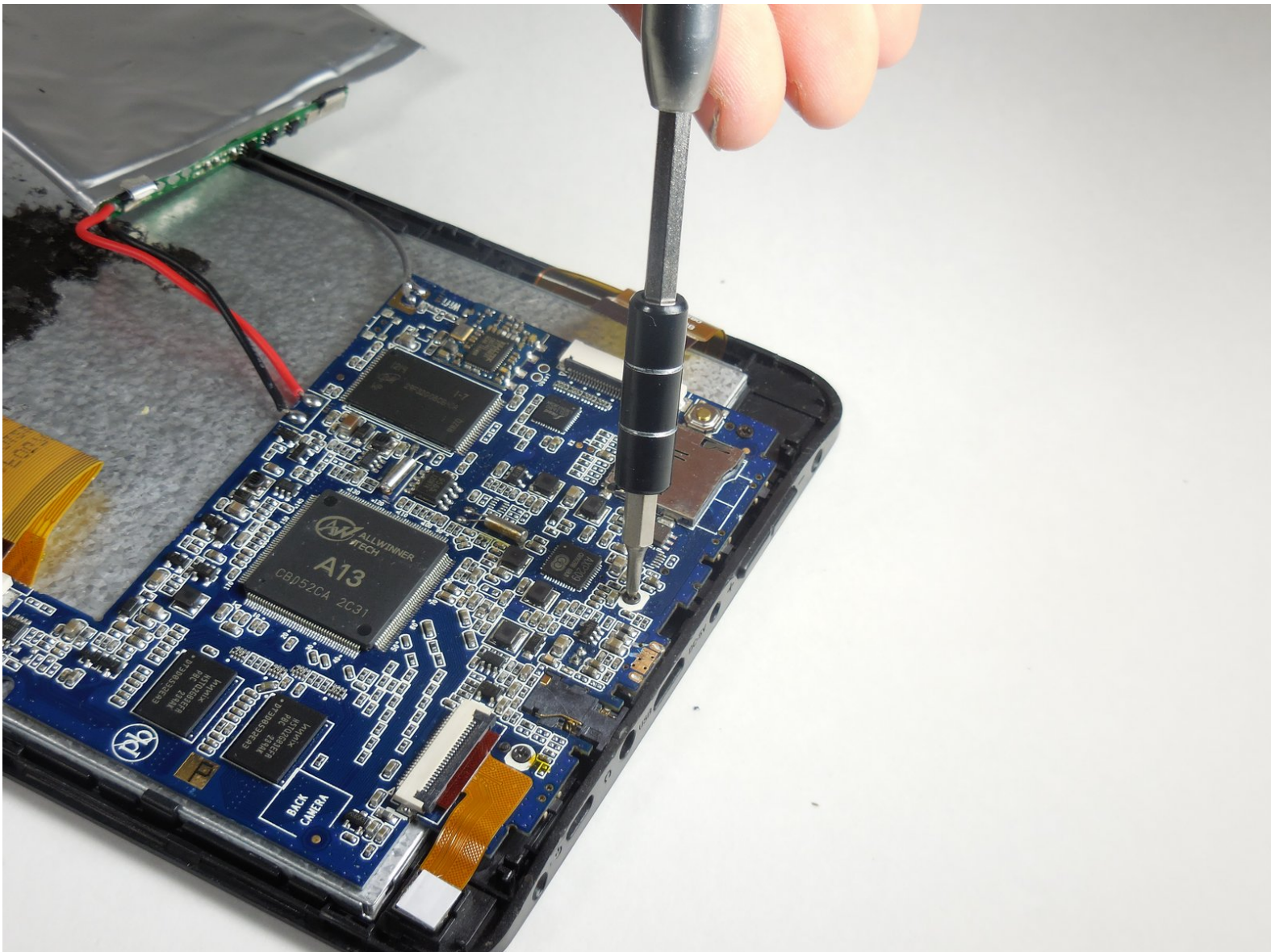




Azpen A701 Motherboard Replacement

This guide walks you through the process of replacing the A701's motherboard.

Written By: Michael



INTRODUCTION

Replacing the motherboard requires the removal of only a few screws and wires. Always remember to be gentle when handling the device, **never** replace parts inside the device when the power is on, and to avoid touching any parts without being properly grounded.



TOOLS:

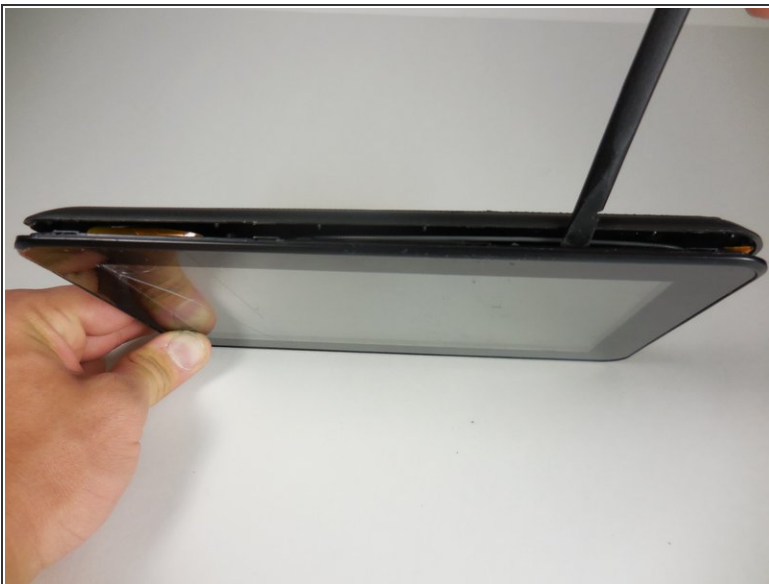
- [Spudger](#) (1)
-

Step 1 — General Disassembly Prerequisite Guide



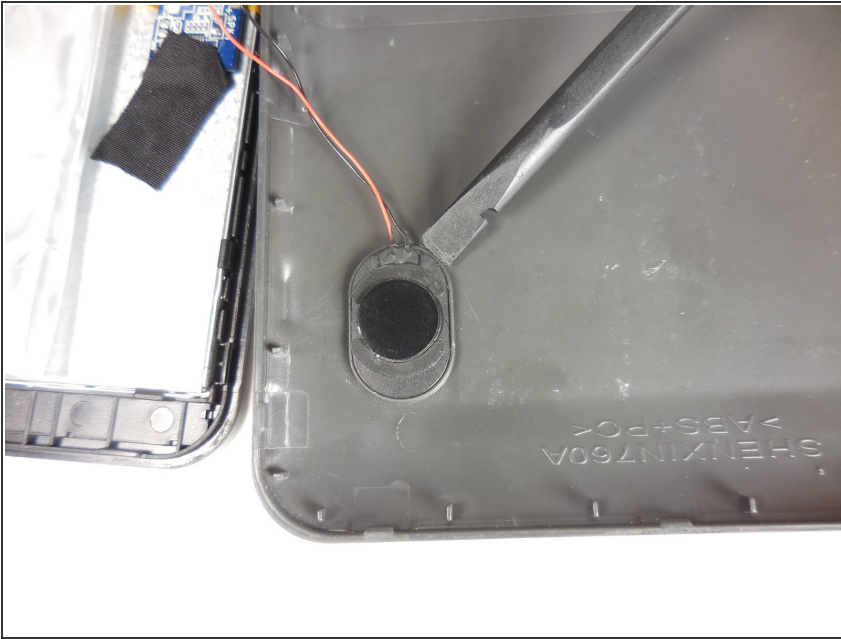
- Remove the two 2cm screws on the bottom using the PH0 Phillips head screw driver.

Step 2



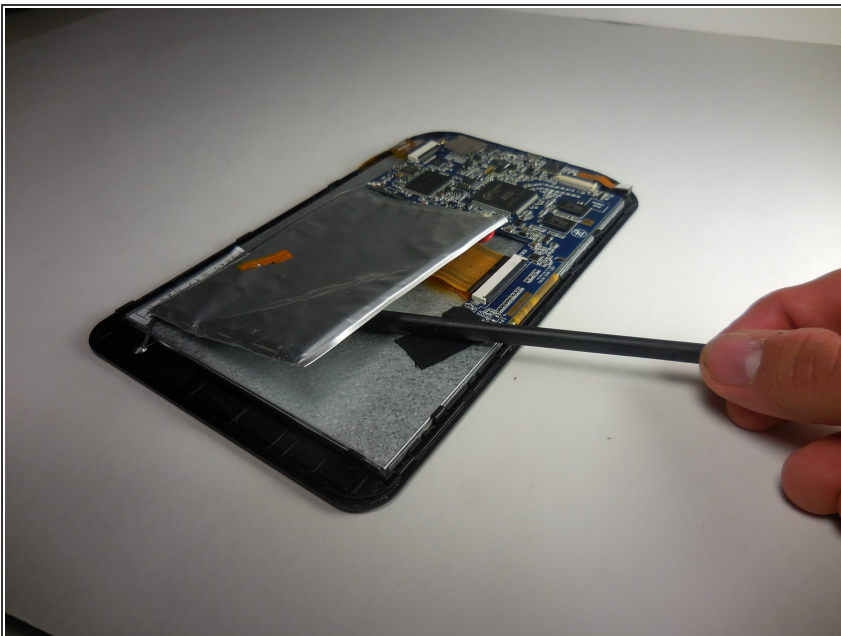
- Pry open back piece with plastic spudger.
 - Remove the back piece of the device.
- i** The back panel may be difficult to pry off, use gentle force.

Step 3



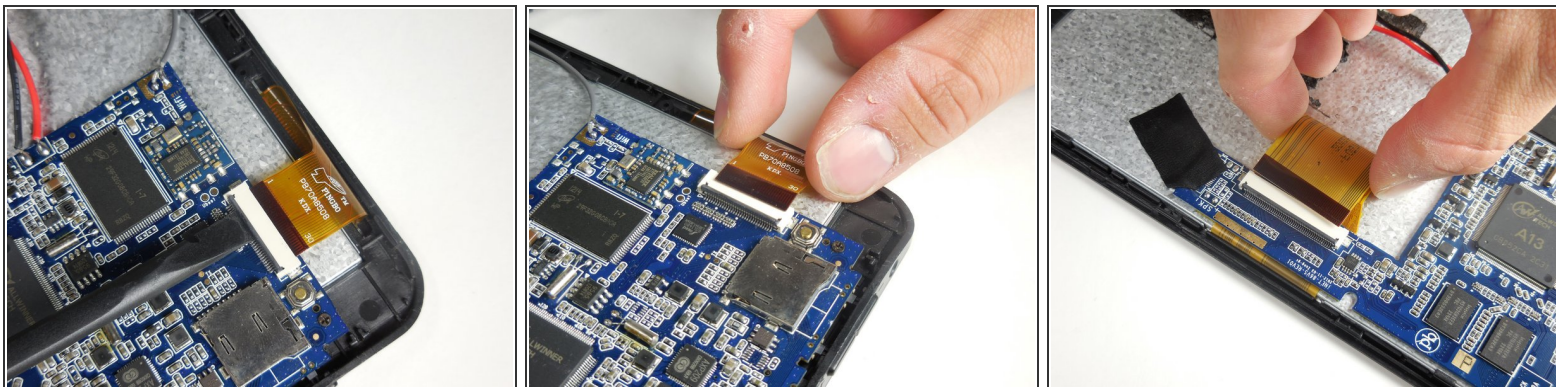
- Disconnect speaker (which is attached by black and red wires) from back piece using plastic spudger.

Step 4



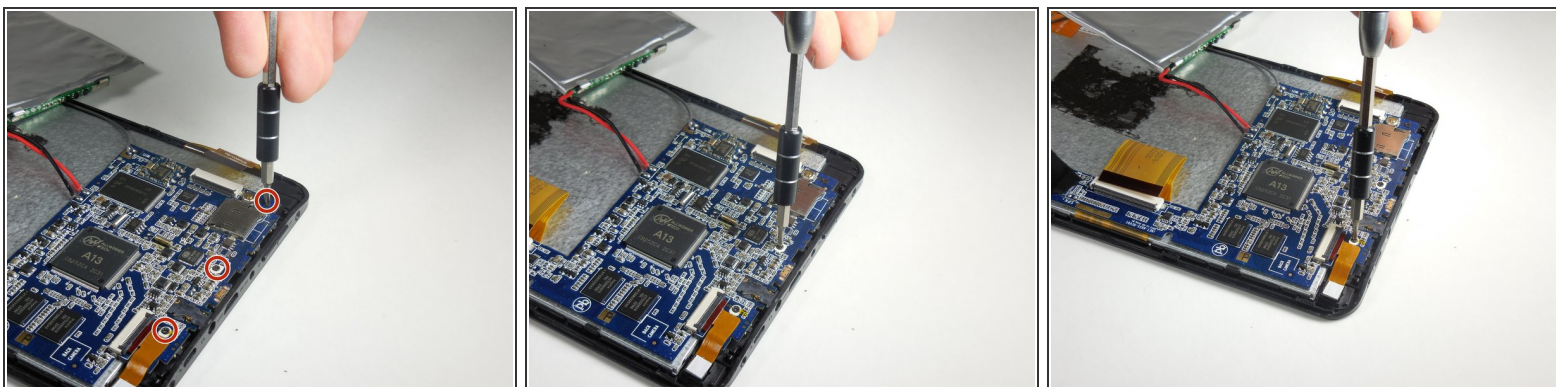
- Gently pry the battery off of the device with the plastic spudger.
- ⓘ There is a large amount of glue holding the battery to the device.
- ⚠ Do not puncture the battery with the plastic spudger.

Step 5 — Motherboard



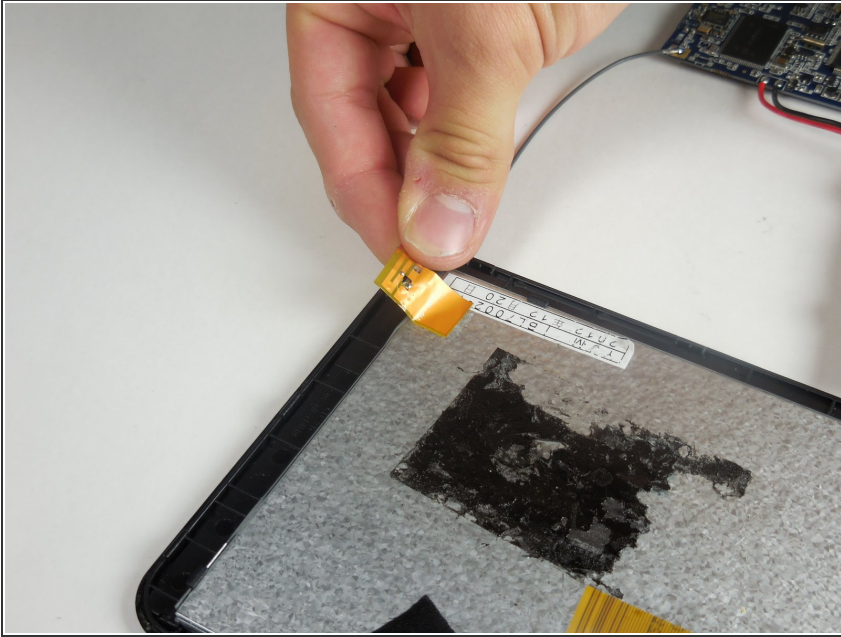
- Remove all three ZIF cables connected to the motherboard (the blue, angled piece) by lifting the gray flap with your finger or a plastic spudger and gently removing the cable.

Step 6



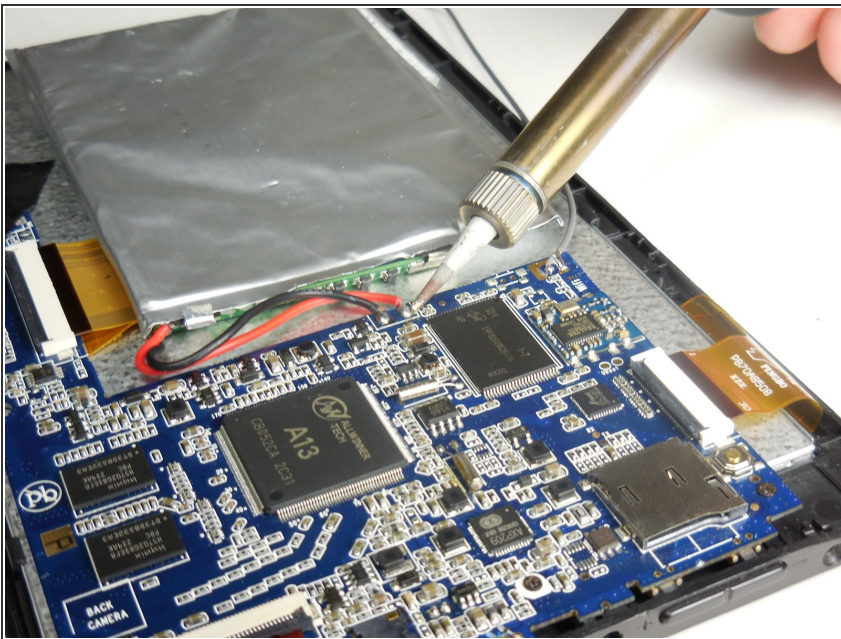
- Remove the three 2cm screws at the bottom using the Phillips PH00 screwdriver head.

Step 7



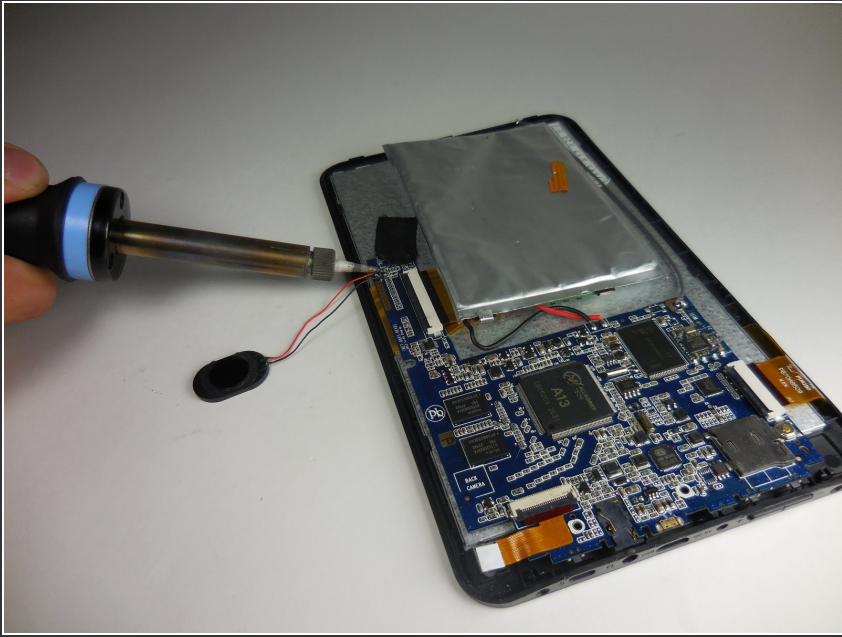
- Gently peel off the orange sticker with the gray wire connected to the upper corner of the device. This is the antenna.

Step 8



- Remove solder connecting the battery to the motherboard using the soldering kit.
 - Place battery aside.
- ⓘ For more information on soldering, refer to iFixit's [Soldering Guide](#).

Step 9



- Remove solder connecting the speaker wires to the motherboard.
- Set speaker aside.

Step 10



- Remove solder connection the gray antenna wire to the motherboard.
- Set antenna aside.

Step 11



- Gently remove motherboard from device.

Step 12



- Insert new motherboard.
- Replace all three 2cm screws at the bottom of the motherboard.

To reassemble your device, follow these instructions in reverse order.