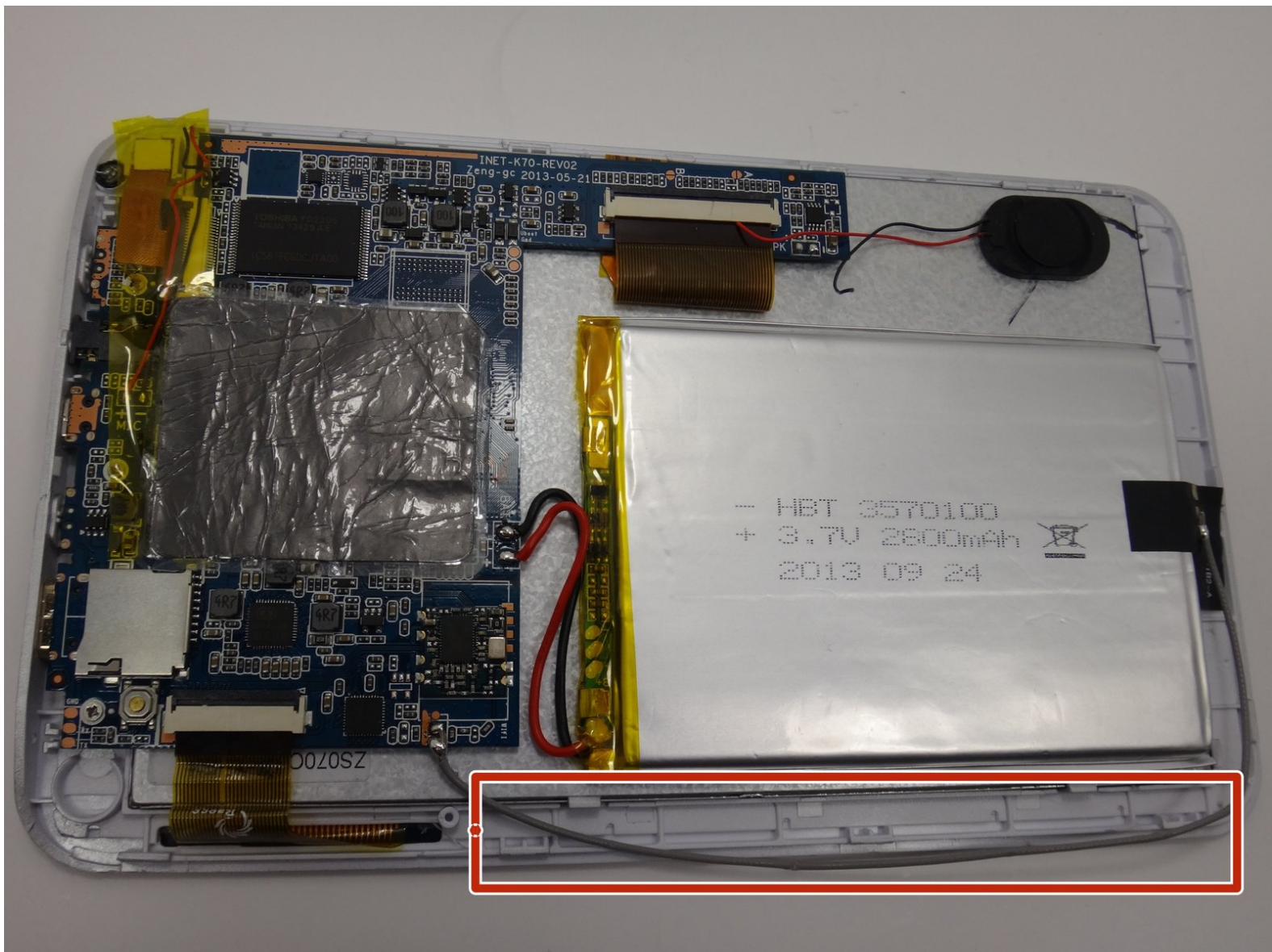




# Azpen A720 Wifi Antenna

This guide will tell you how to replace the Azpen A720 internal wifi antenna.

Written By: Anna



## INTRODUCTION

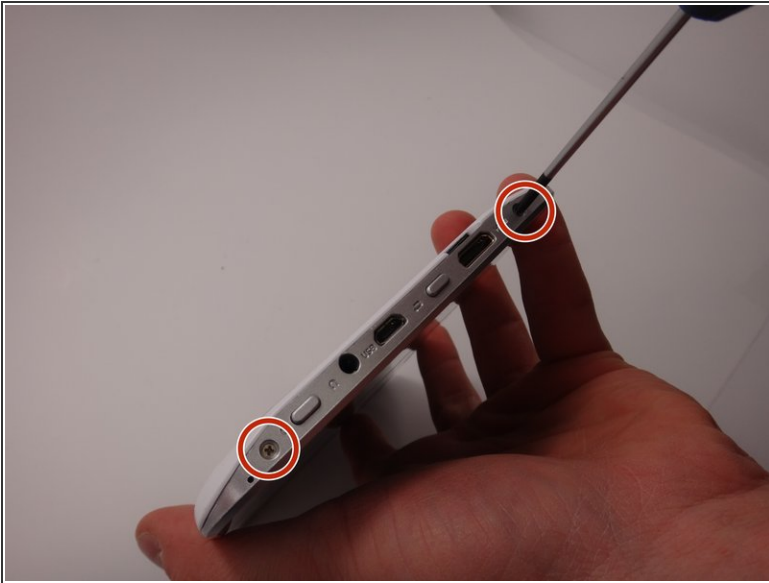
The internal wifi antenna is important for connecting your tablet to wifi internet. Replacing the Azpen A720 wifi antenna is relatively simple. If you are having issues connecting to wifi use this guide to replace you internal wifi antenna.

---

### TOOLS:

- [Soldering Iron](#) (1)
  - [Solder](#) (1)
  - [Magnetic Project Mat](#) (1)
  - [Phillips #00 Screwdriver](#) (1)
  - [iFixit Opening Tools](#) (1)
-

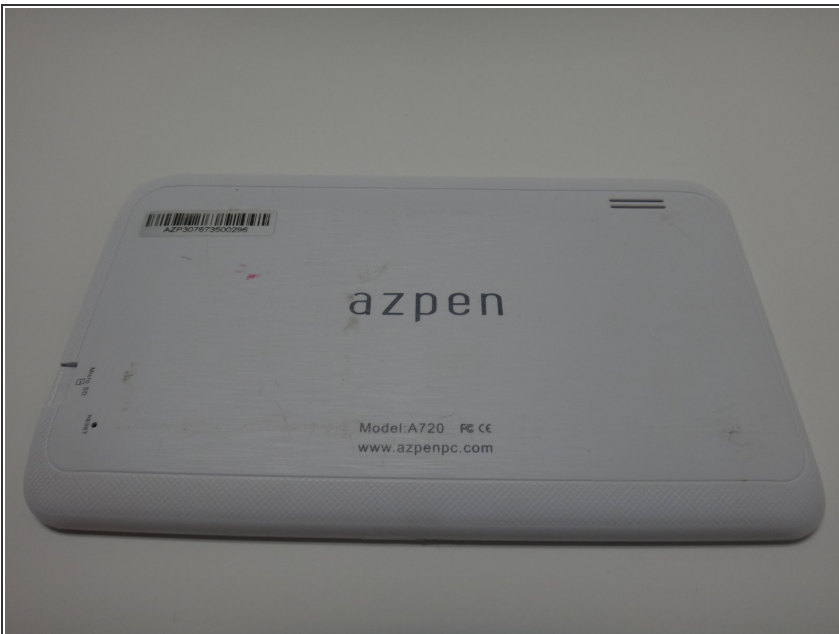
## Step 1 — Aspen A720 Back Cover Replacement



- Use the Phillips # 00 screwdriver to remove the two screws found on the top edge of the tablet near the power button and mini HDMI port (4mm).

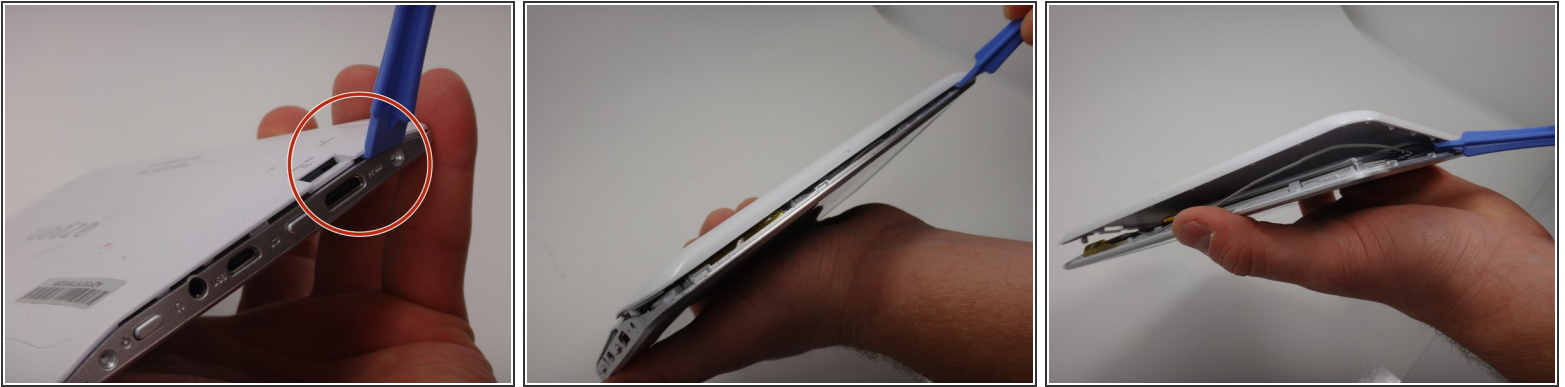
⚠ Make sure to keep track of screws.

## Step 2



- Lay the tablet screen-side down.

### Step 3



- Use the plastic opening tool to pry the white back from the silver frame. Start near the micro SD slot.
- Slide the plastic opening tool around the perimeter of the casing until the back is disconnected.

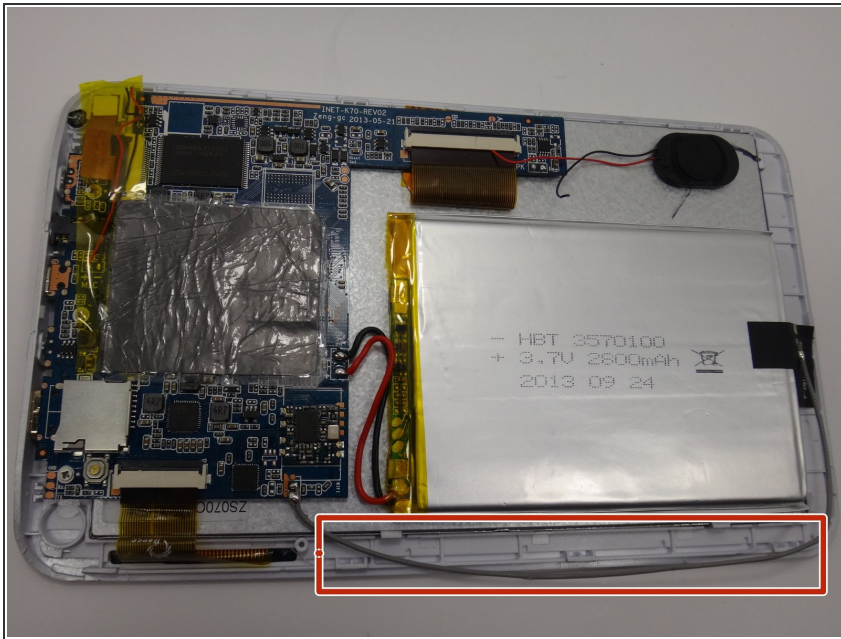
### Step 4



- Take the white backing off your tablet.

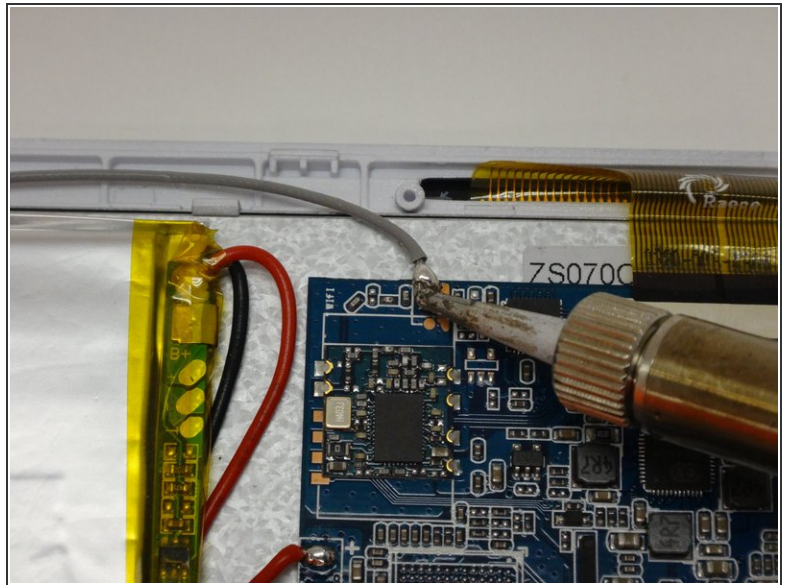
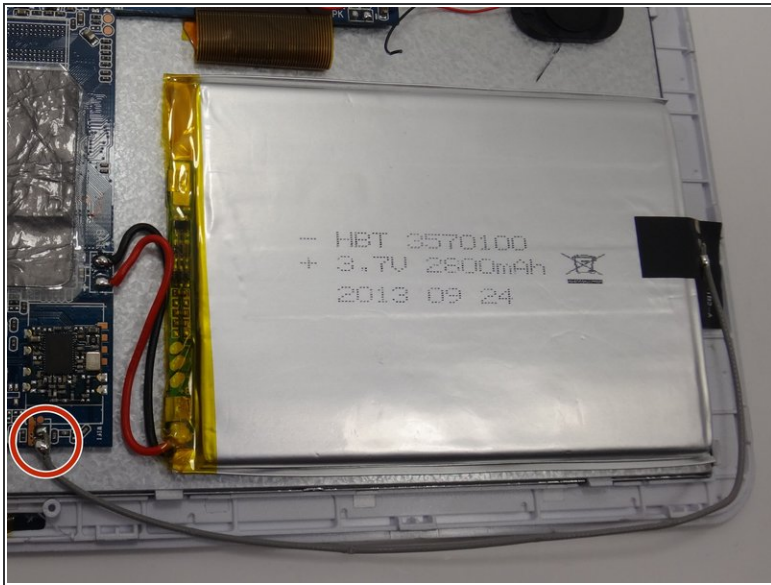


## Step 5 — Wifi Antenna



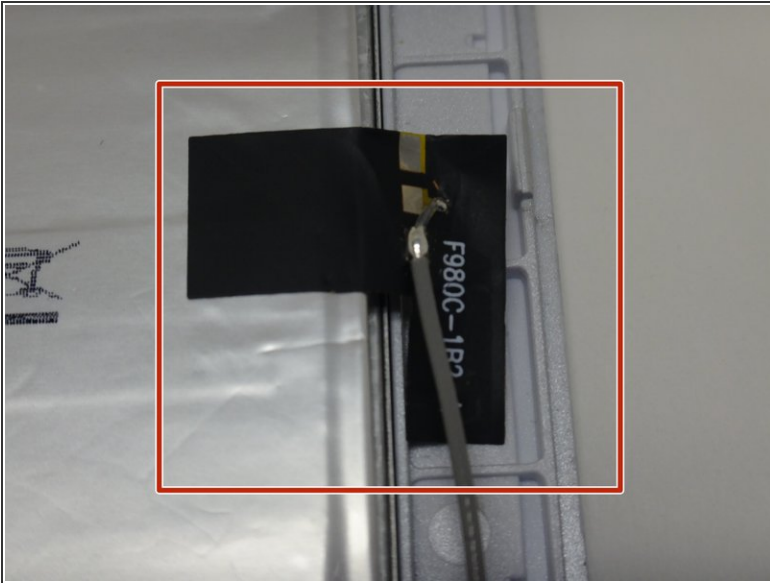
- Locate the gray cord attached to the motherboard and the battery. This is the wifi antenna.

## Step 6



- Locate the soldering connection between the wifi antenna and the motherboard.
  - Using a soldering iron, melt the soldering connection between the cord and the motherboard and disconnect the cord.
- ⚠ The soldering iron gets very hot, be careful not to touch the tip to avoid burns. Click [here](#) to learn how to solder.

## Step 7



- Locate the black sticker connecting the wifi antenna to the battery.
- Peel the black sticker off of the battery to disconnect the wifi antenna.
- Remove and replace the defective wire.

To reassemble your device, follow these instructions in reverse order.