



Azpen A740 Camera Replacement

This guide will show you how to replace the camera in the Azpen A740 Device.

Written By: Victoria Poitier



INTRODUCTION

When removing the camera, the user only has the option of removing both the front and rear camera since they are attached.

TOOLS:

- [Spudger](#) (1)
 - [Phillips #00 Screwdriver](#) (1)
 - [Phillips #1 Screwdriver](#) (1)
 - [iFixit Opening Tools](#) (1)
-

Step 1 — Back Panel



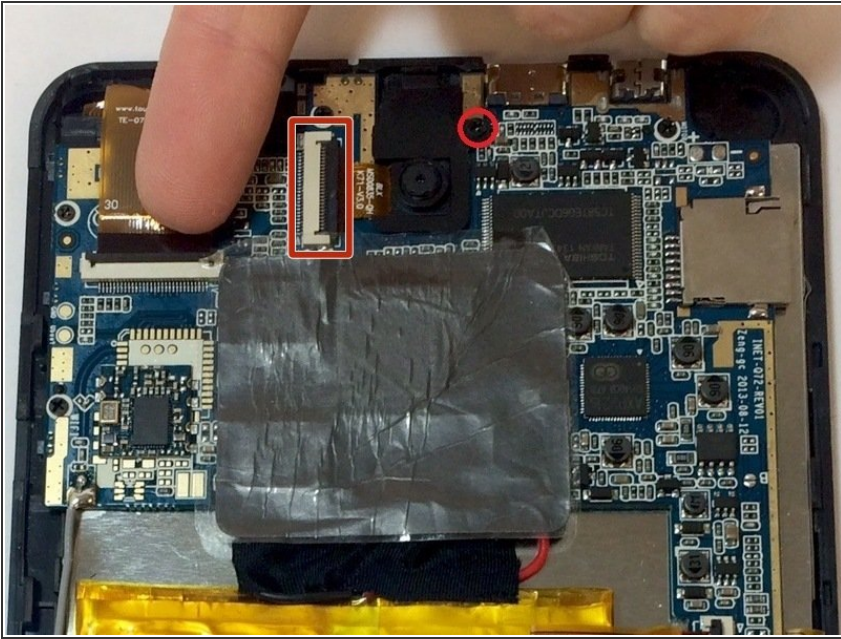
- Use the plastic opening tool or black spudger tool to lift the back panel off the tablet.

Step 2 — Camera



- You should see the motherboard, the speaker, and the battery.

Step 3



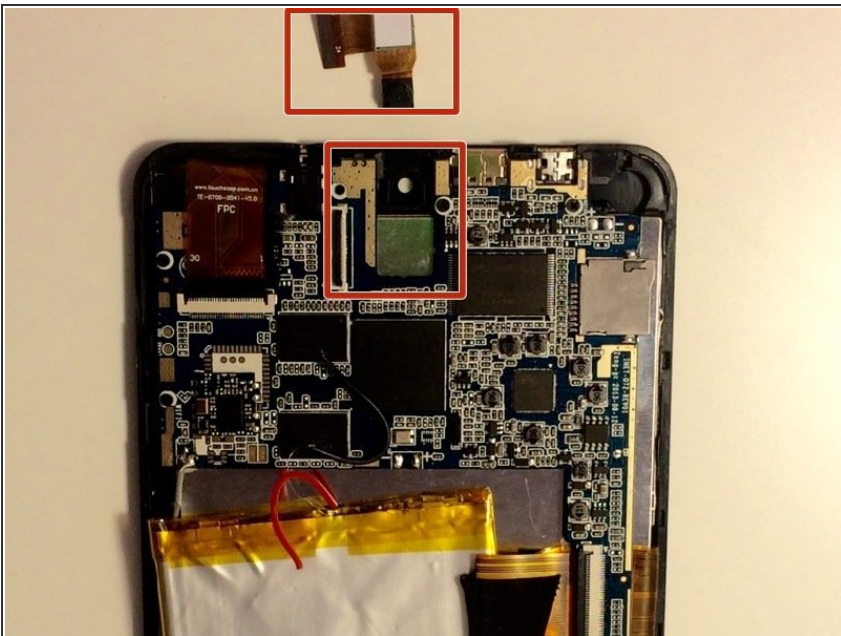
- The camera is located at the top of the device and is attached by one screw with 3.75mm and one clip. First remove the screw from the plastic connecting the camera to the motherboard.

Step 4



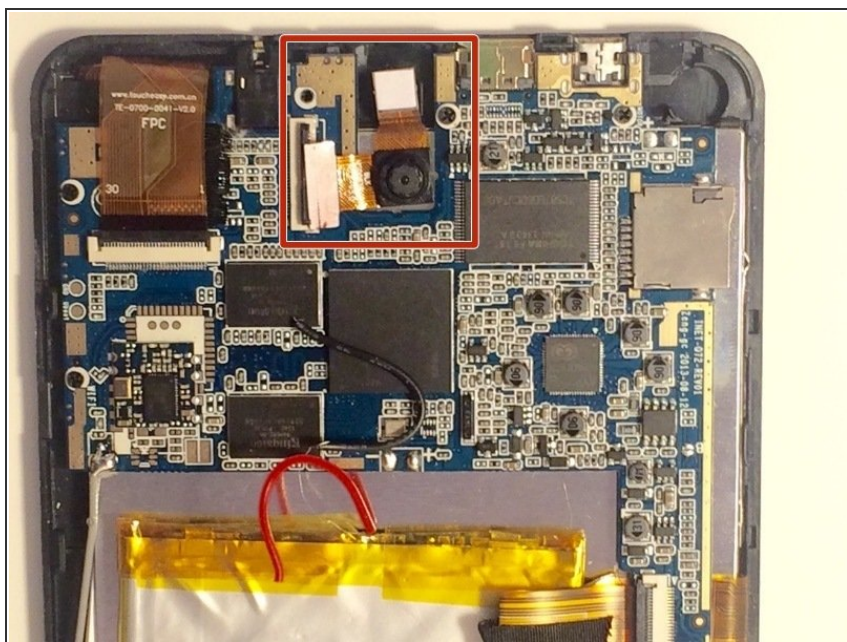
- With the plastic now removed from the camera, the user is able to unclip the camera from the motherboard by pulling up the black clip and sliding out the camera.
- ❗ Here you can see the rear camera is on the top and the front camera is on the top. As you can see, it is not possible to replace one camera and not the other.

Step 5



- This is what the device should look like with the camera removed.
- ❗ At the top of the image this is the front and rear camera and the space the new camera should be placed.

Step 6



- Now you are able to insert the new camera.
- ☑ To reassemble your device, follow these instructions in reverse order.

To reassemble your device, follow these instructions in reverse order.