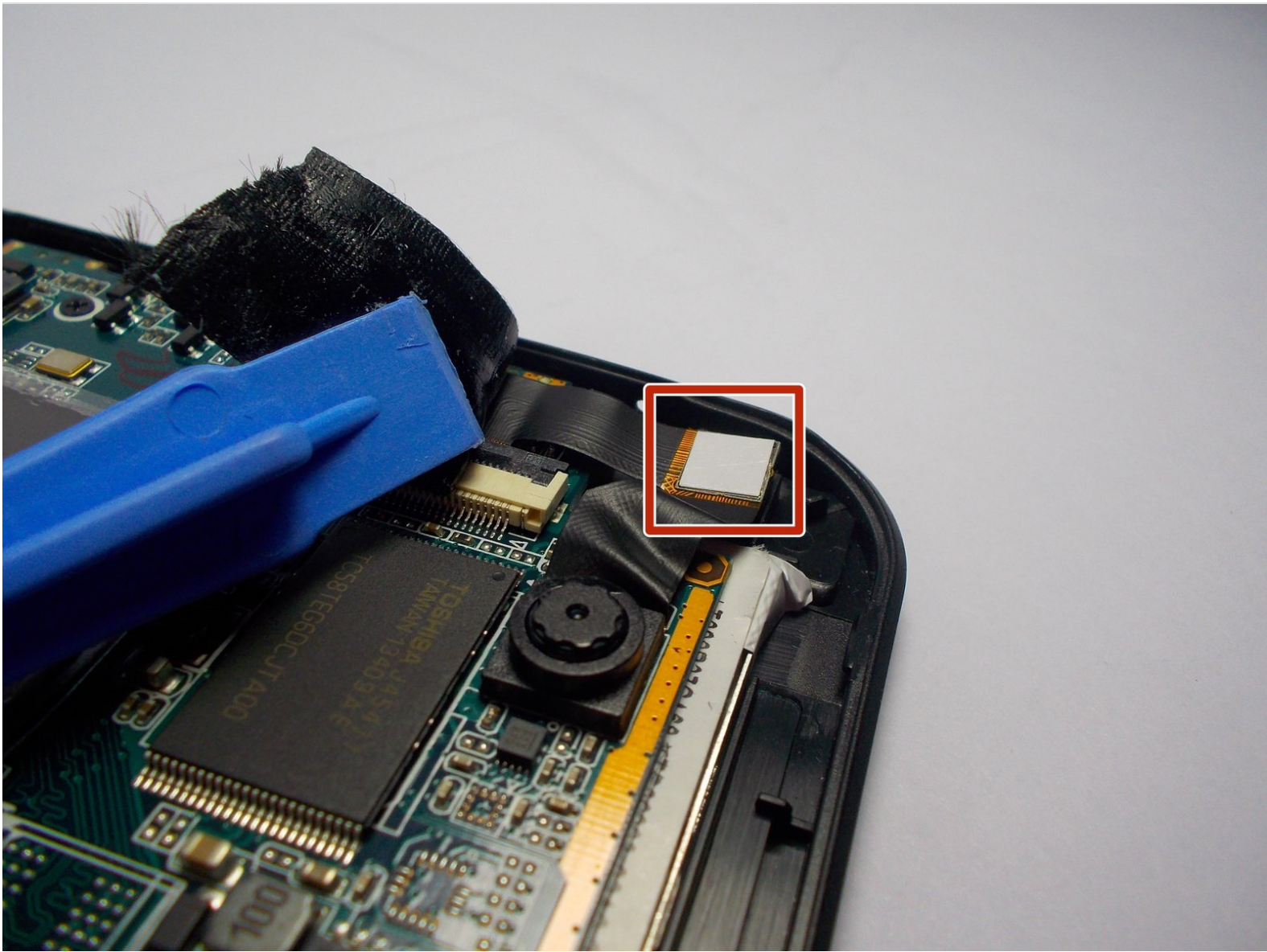




Azpen A909 Front and Rear Facing Camera Assembly Replacement

This will demonstrate the steps needed to perform a proper camera replacement for the A909 device. Note: Both the front and rear facing cameras are included in the same assembly. Because of this, both cameras have to be removed simultaneously.

Written By: Jordan



INTRODUCTION

Is your tablet no longer taking pictures? Fear not! This easy to follow guide will show you the proper technique for replacing the cameras.

TOOLS:

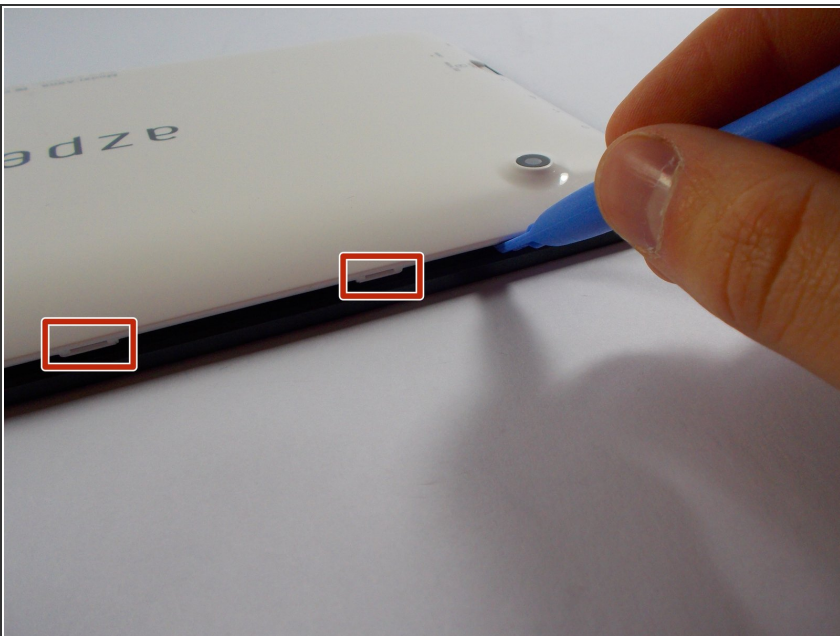
- [Phillips #00 Screwdriver](#) (1)
 - [iFixit Opening Tools](#) (1)
-

Step 1 — Back Cover



- Begin by unscrewing the two 1.4 mm diameter Phillips #00 head screws at the top of the device.

Step 2



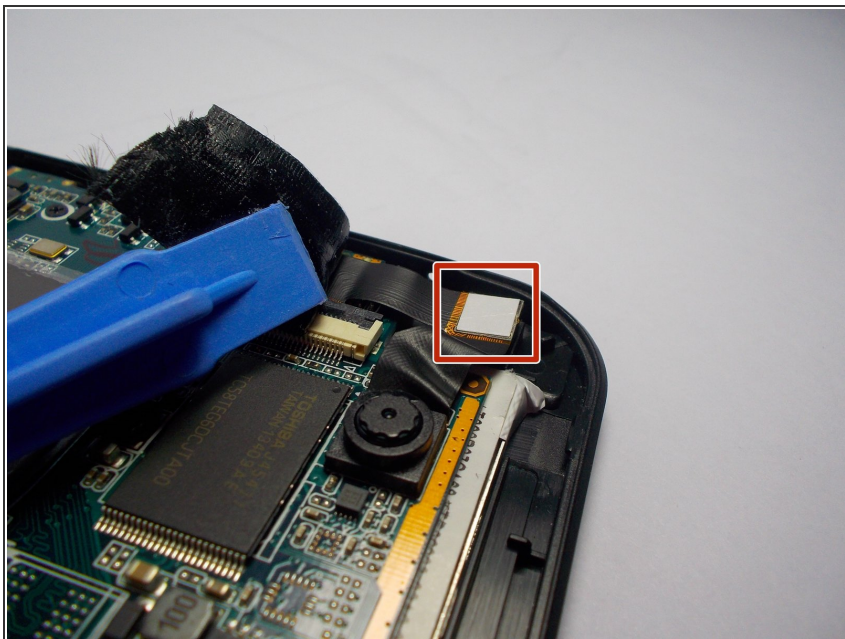
- Next, gently pry the cover off with a plastic opening tool or a similar instrument by loosening all of the anchoring points. Two of the anchoring points are circled in the image. Avoid excessive bending or pivoting, since doing so may break the anchoring points.

Step 3



- After prying open all of the anchoring points, the cover will lift off of the tablet.
- ☑ To replace the cover, simply snap it back in place and re-insert the two screws. Because the speaker is not fully fixed to the interior of the tablet, make sure that it is in the position that will allow it to fit inside the speaker mounting on the cover.

Step 4 — Front and Rear Facing Camera Assembly



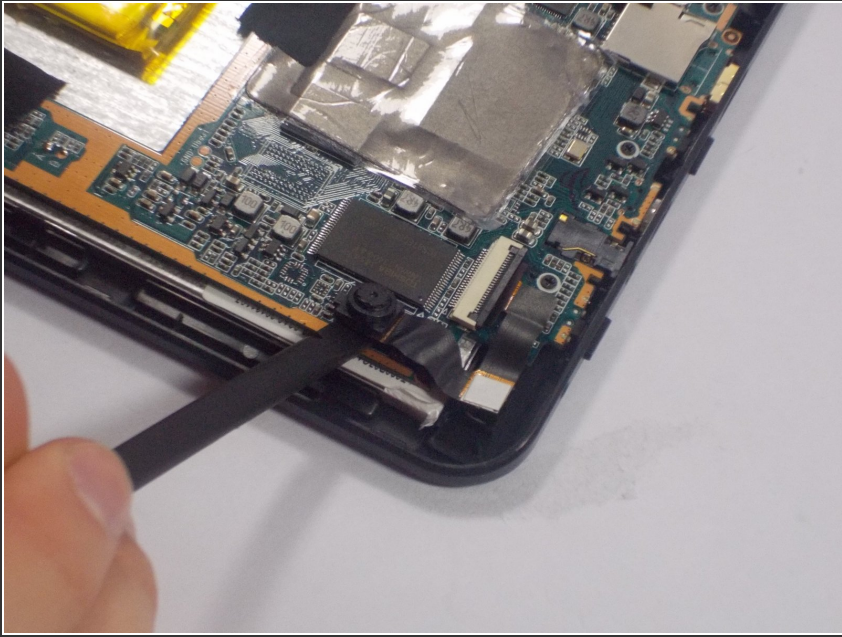
- Using a plastic opening tool, gently peel back the black electrical tape to reveal the power strip and the front facing camera, which is marked by the red box in the image.

Step 5



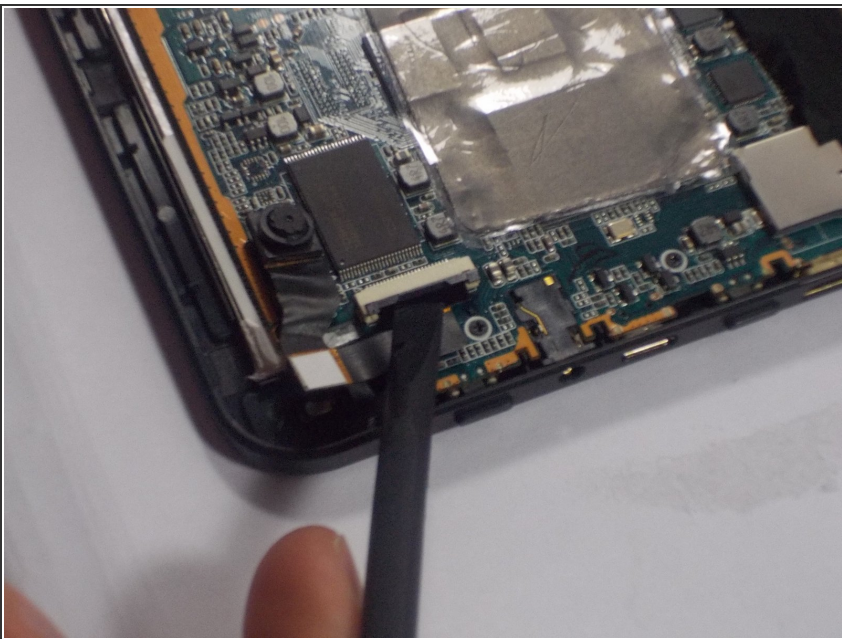
- Gently pull the front facing camera out of its mounting point. Use a spudger if necessary.

Step 6



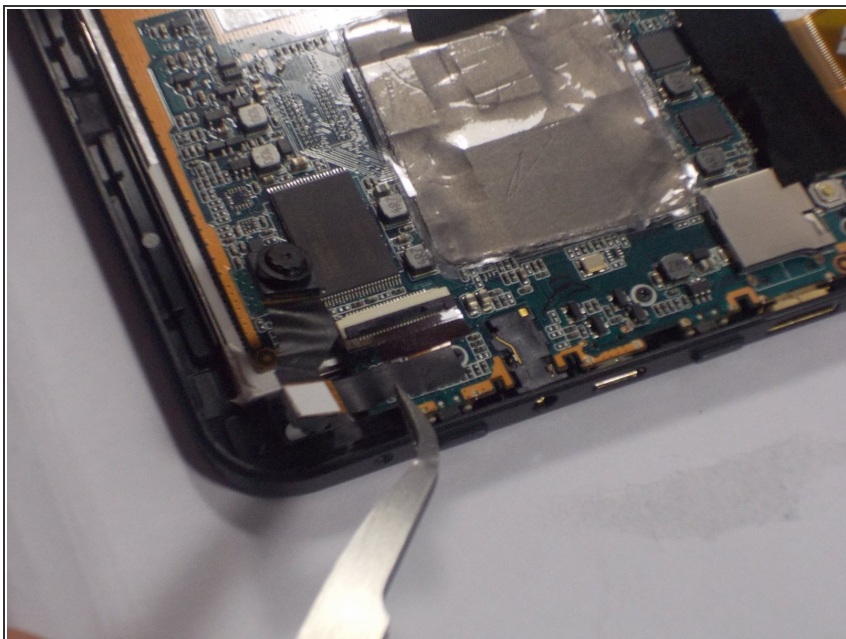
- Using the spudger, pry the rear facing camera its power strip off the circuit board. This may require some force, since a strong adhesive is used to mount the camera assembly to that point.

Step 7



- Lift open the connector flap with the spudger.

Step 8



- ⓘ At this point, all points of the camera assembly should be detached from the device.
- Lift and remove the power strip/camera assembly from the device with a pair of tweezers.

To reassemble your device, follow these instructions in reverse order.