



BELLA TXG-DS14 The Spring of Silver Basket Stopper Replacement

This is a replacement guide to the spring of silver basket stopper of BELLA TXG-DS14

Written By: Kazuki Mizuishi



INTRODUCTION

An old spring inside the silver basket stopper could cause the basket to pop out as it loses elasticity and this guide will show how to replace it.

TOOLS:

- [Phillips #1 Screwdriver](#) (1)
-

Step 1 — The Spring of Silver Basket Stopper



- Turn the device off and make sure it is cooled down. Then place the device in front of you and take the drawer out by placing a hand on the handle and pull towards you. Make sure the plug is out of the way before starting any of the following steps.
- Slide the clear lock away from the button and press down on the release button to release the basket from the drawer.

Step 2



- Turn the device onto its side and have the bottom surface face you.

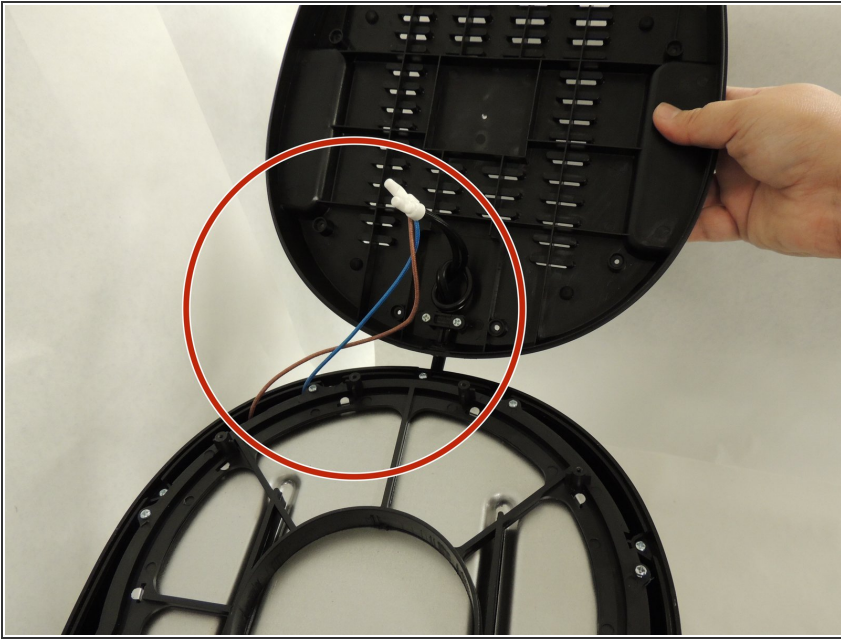
Step 3



- Remove the 1.5mm Phillip's #1 screws from the bottom of the device by rotating it counterclockwise with a Phillips #1 Screwdriver.

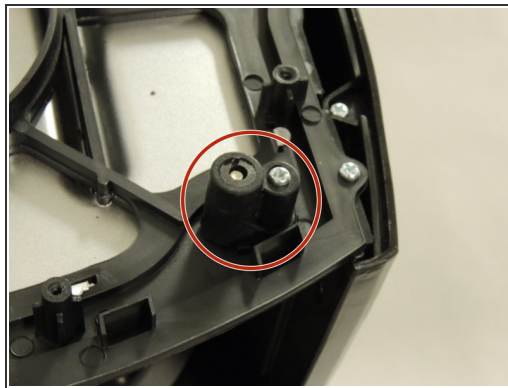
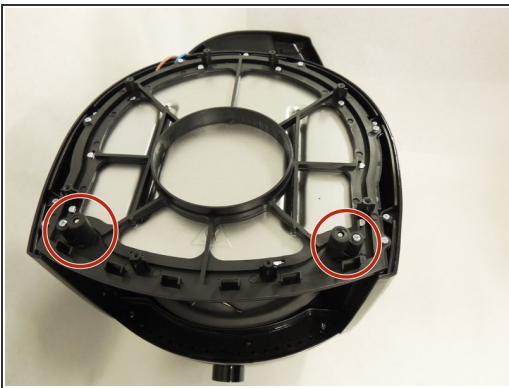
i There should be 8 screws removed by the end of this step.

Step 4



- After removing the screws, carefully open the bottom cover.
- ⚠ Careful not to remove the black cord connected to the bottom of the device and has copper and blue colored cables attached with white caps on top of each cable.

Step 5



- You should find two connected black cylinders in the top left and right-hand corners of the device containing the two silver stoppers for the drawer.
- Unscrew the 1.2mm Phillips #1 screws connected to the black cylinders by using the Phillips +1 driver, rotate it counterclockwise and remove it.
- ⓘ There should be one screw connected to each of the black cylinders.

Step 6



- Once both cylinder covers are removed, you should be able to locate the spring and the silver stopper
- ⚠ While taking out the black cylinders be careful because the silver stoppers are loose inside with a spring.
- Remove silver stoppers and springs from the black cylinders. Replace springs with new ones.
- ℹ To reassemble the device, follow this guide in reverse order.

To reassemble your device, follow these instructions in reverse order.