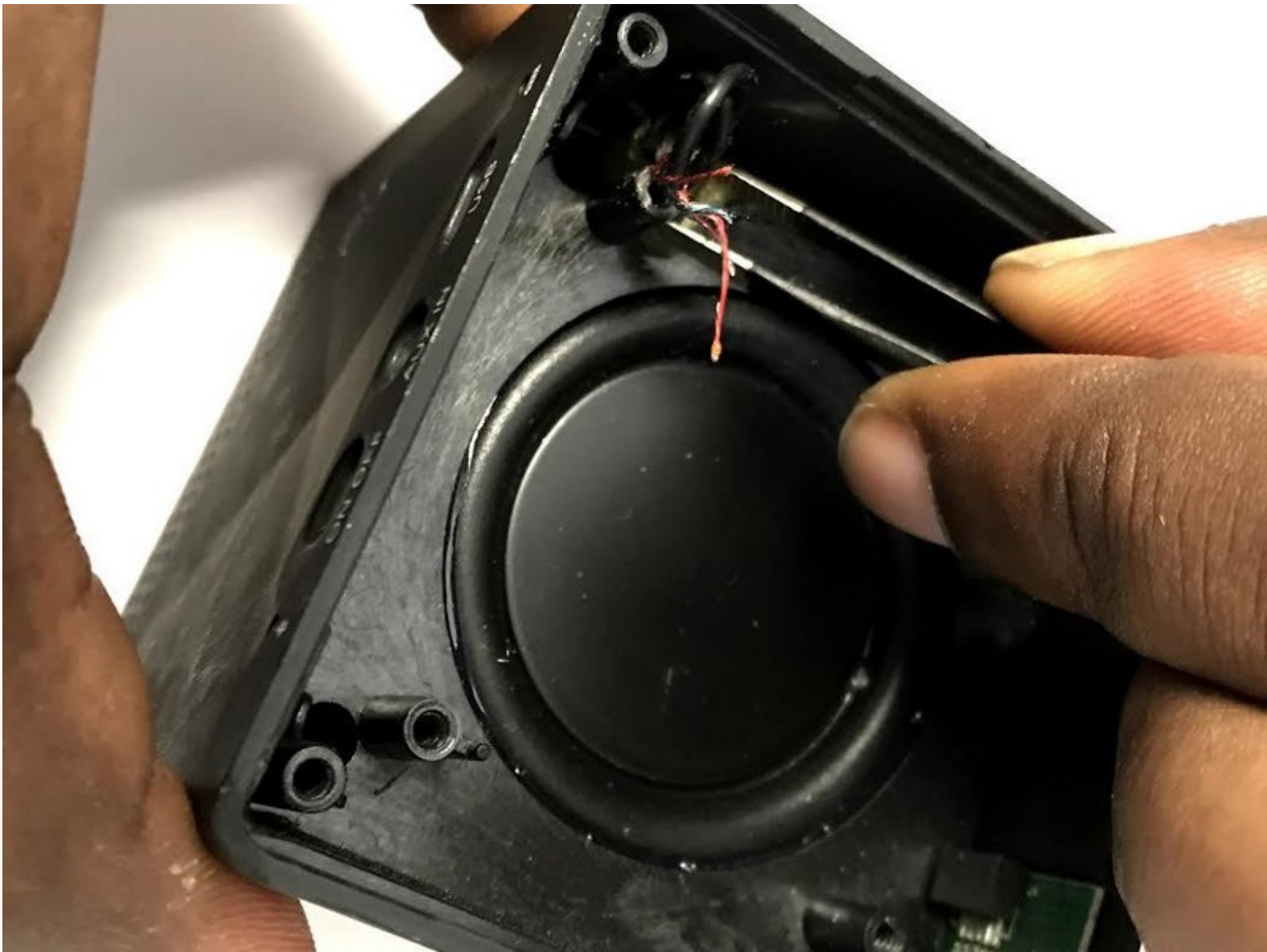




BEM Mojo 2 Speaker Replacement

Is your speaker not working? Are you experiencing a lack of audio? That may be due to the speakers lack of output. Follow these steps for replacement.

Written By: Rachel Iacoboni



INTRODUCTION

This guide will show you how to replace the speaker itself but before doing so, check to make sure your Bluetooth signal is not being obstructed by any objects or walls and is close enough to the speaker. Also, make sure the battery is fully charged. Both of these could be causing distorted sound on your speaker. If both of these possible causes are not true than the actual cause could have to do with your speaker in which you should replace it.



TOOLS:

- [Phillips #0 Screwdriver](#) (1)
 - [Metal Spudger](#) (1)
 - [Tweezers](#) (1)
 - [iFixit Opening Tools](#) (1)
-

Step 1 — Speaker Battery



- Pull back the rubber corners to uncover the bottom screws.
- Continue this process for all four 10 mm screws.

Step 2



- Use the J0 screwdriver to remove all four 10mm screws from the bottom of the speaker.
- ⚠ Caution:** It is important when using the screwdriver to not use excessive force as this may strip the screw and can damage the speaker itself.

Step 3



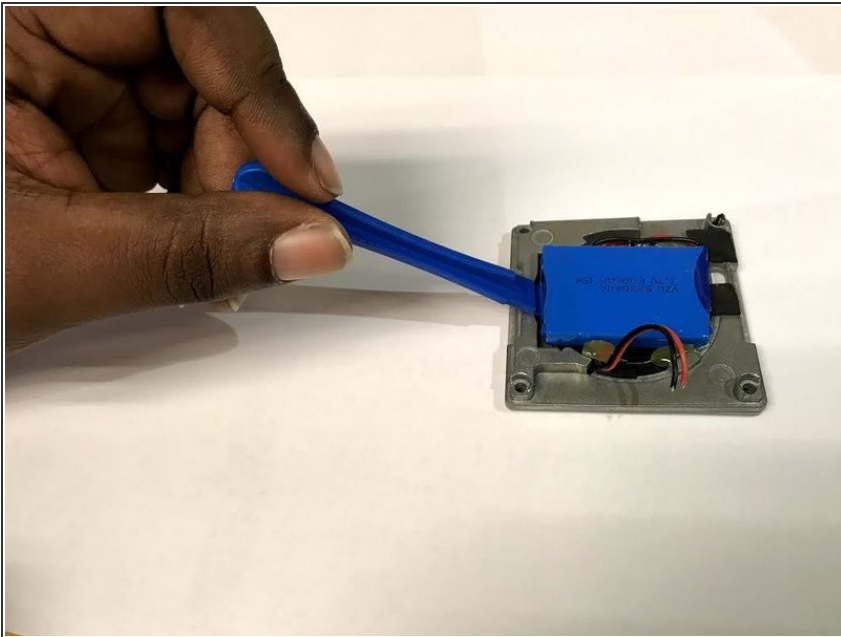
- Remove the bottom cover of the speaker.

⚠ *Caution:* Be careful when removing the bottom cover of the speaker as there are wires that connect to the speaker itself that become exposed upon base removal.

- Remove all of the wires from the speaker's internal chip, utilizing the tweezers.

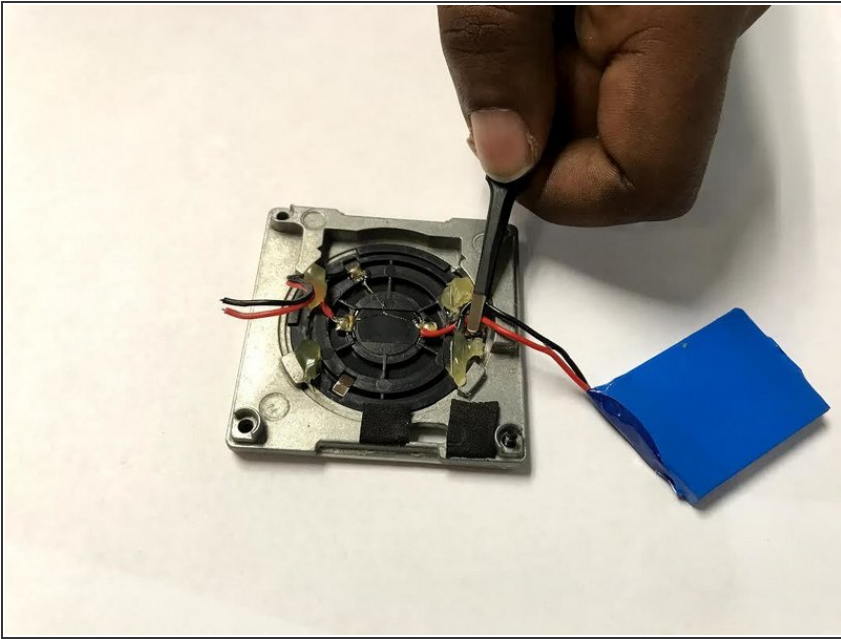
⚠ *Caution:* Be careful not to damage the chip.

Step 4



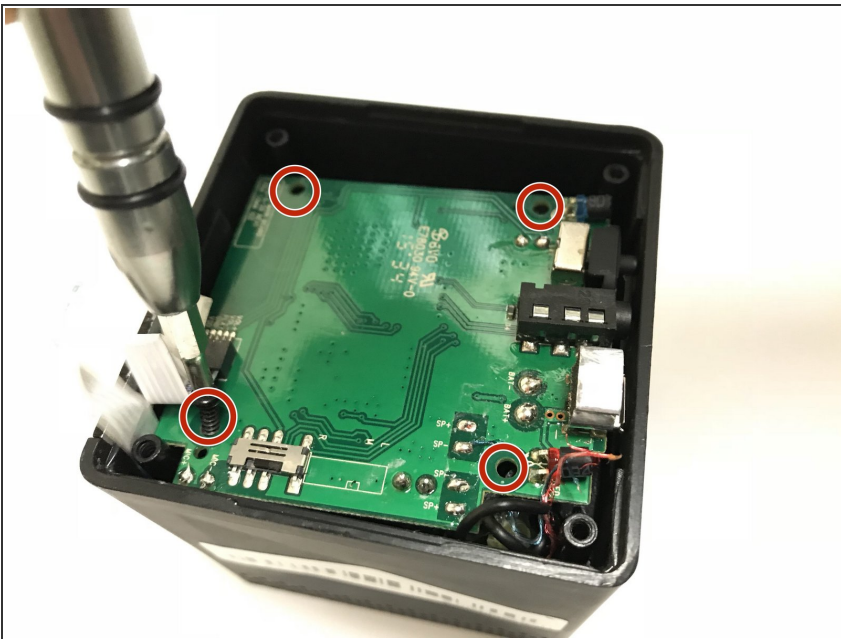
- Remove the speaker's battery from its metal base, utilizing the plastic opening tool.

Step 5



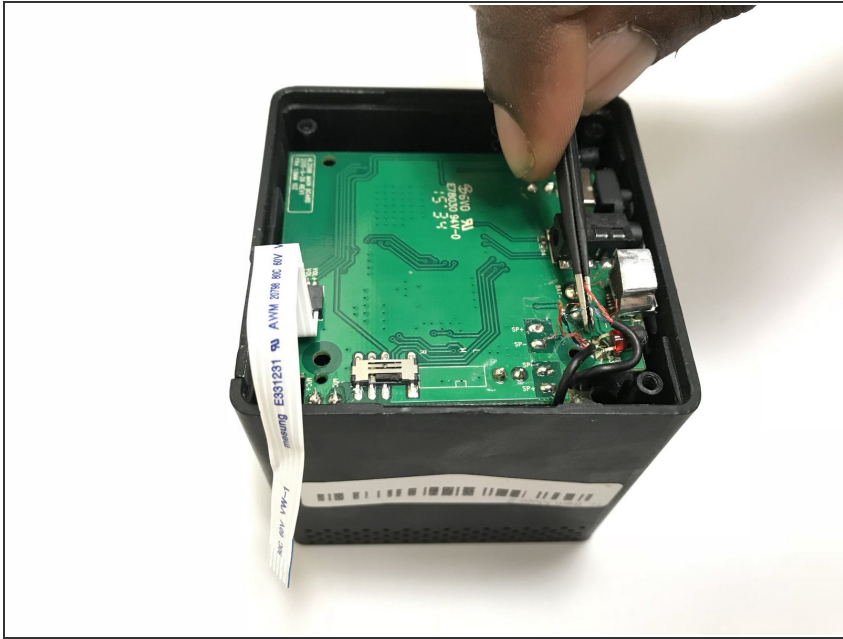
- Remove the wires from the speakers battery using the tweezers or by gently removing them by lightly pinching.

Step 6 — Speaker Motherboard



- Use the J0 screwdriver to remove all four 10mm screws from the motherboard.

Step 7



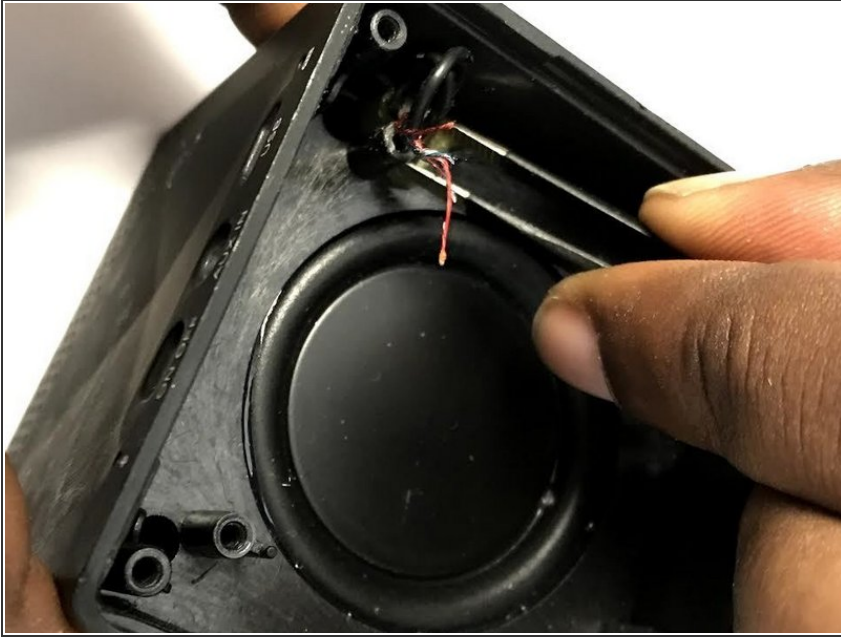
- Remove the red/black wires in addition to the blue/white wires using the tweezers.

Step 8



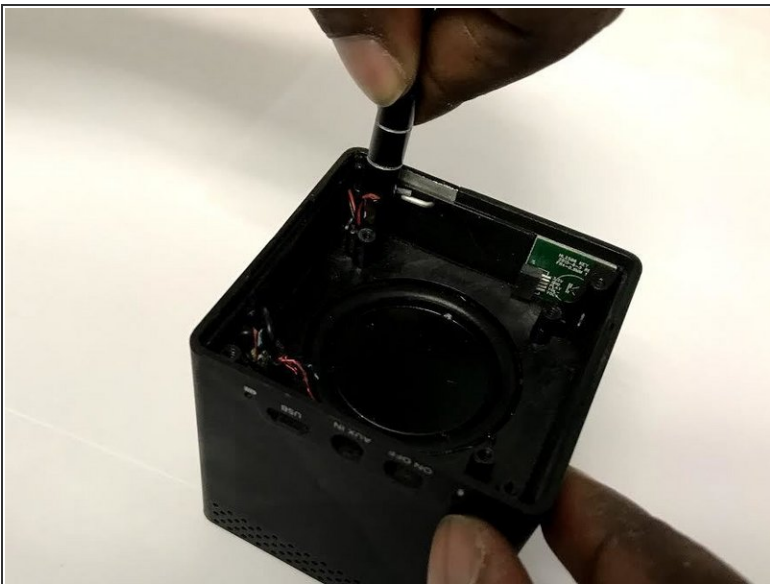
- Remove bus wire from the speaker's motherboard and lift the motherboard out of the speaker.

Step 9 — Speaker



- Remove any glue that is left over from previous parts that may be covering the screw holes or the speaker's drive.

Step 10



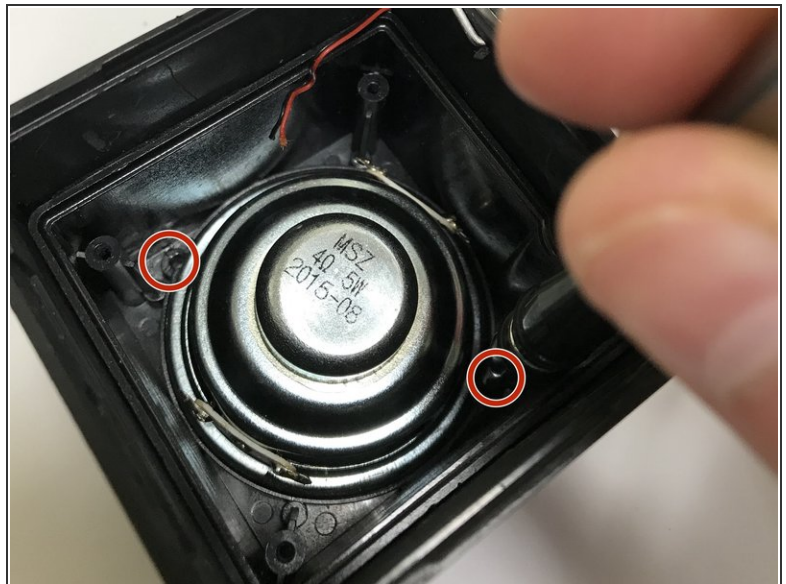
- Remove the speaker's four 10 mm base screws.

Step 11



- Pry out the speaker's base using the metal Spudger. Use caution upon this step, it will require the use of force.
- Remove the wire that will be placed in the speakers driver hole for access to the speaker.

Step 12



- Remove the speaker's two 10 mm screws that are located in its base then take the driver out of the speaker.

To reassemble your device, follow these instructions in reverse order.