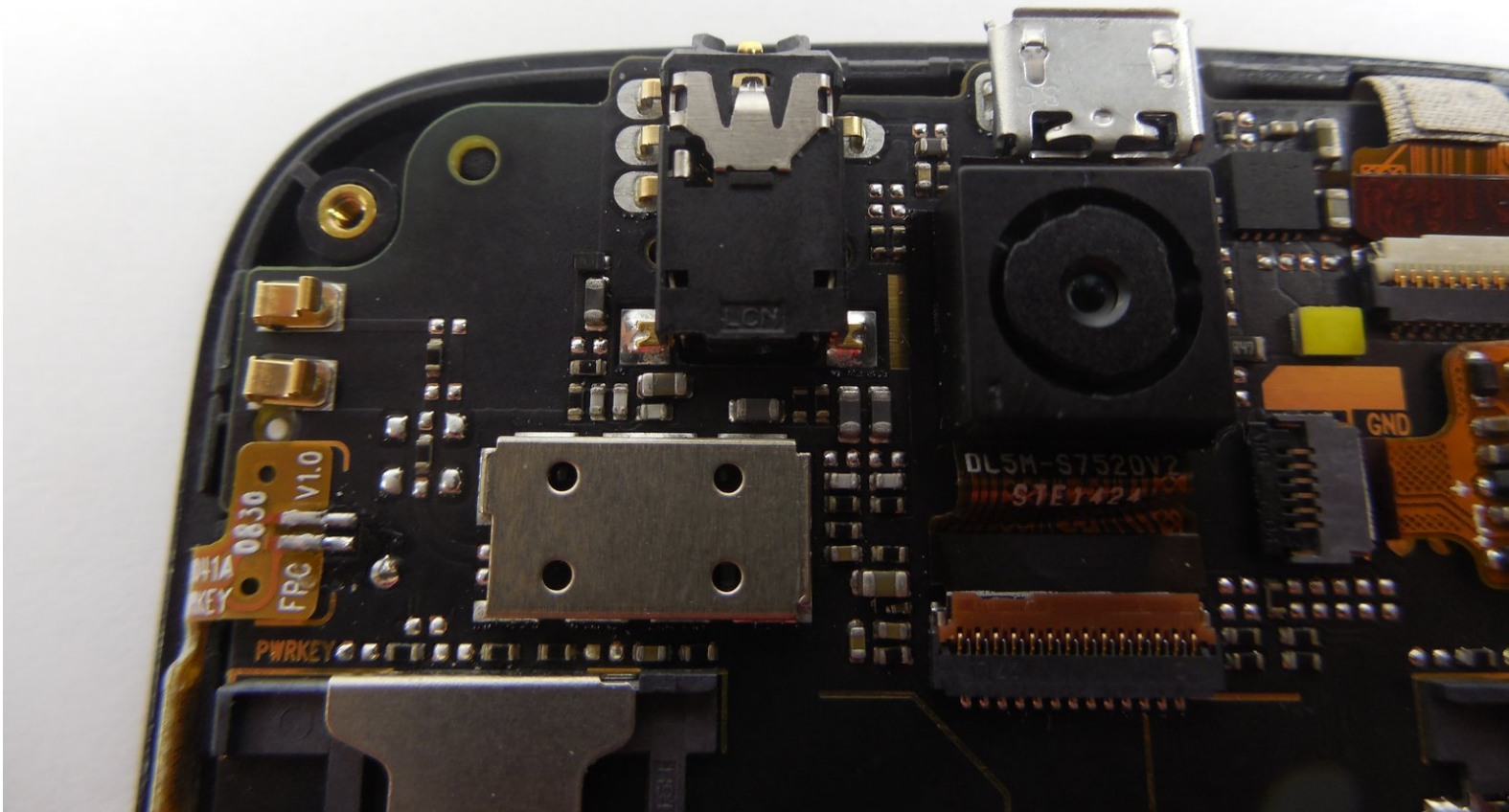




BLU Advance 4.0 Charger Port Replacement

This guide will show you how to take apart your phone to remove and insert a new charger port.

Written By: Jon Sclar

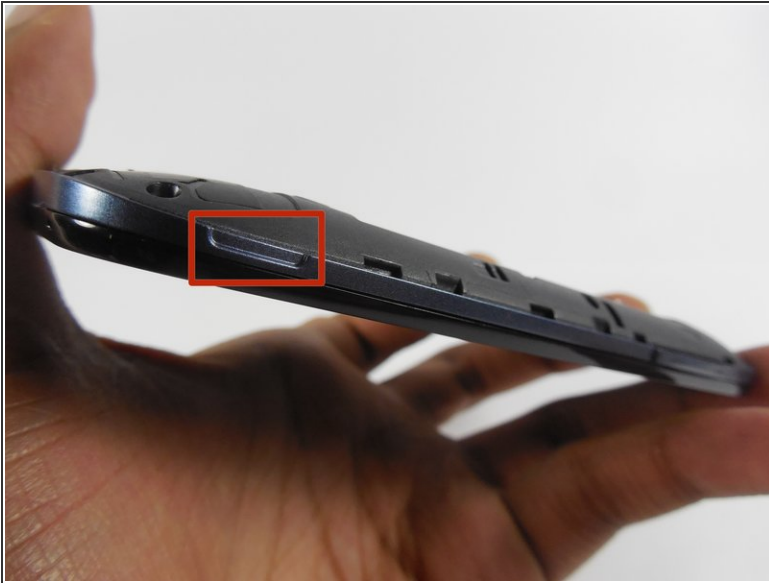




TOOLS:

- [Phillips #00 Screwdriver](#) (1)
 - [Soldering Iron](#) (1)
-

Step 1 — Removing the back cover



- With the back camera on the top side and facing you, find a notch on the bottom right side of the phone.
- Unclip the cover by raising it up from the notch and sliding a flat rigid tool along the edge.

Step 2 — Revealing the motherboard



- Remove the battery.
- Remove 3 screws from each side with a Phillips 00 screwdriver.
- Unclip the screen by sliding a flat rigid tool between the black and the blue side-band.
- Pop off the blue side-band to be exposed to the motherboard.

Step 3 — Separating motherboard from screen



- Remove 2 black plastic buttons from each side, exposing metallic padding.
 - Gently pry the metallic padding off the motherboard with a flat rigid tool.
 - Carefully separate the clip-on tabs while lifting the motherboard away from the screen.
- ⚠ Forcefully separating the motherboard from the screen can further damage your device.

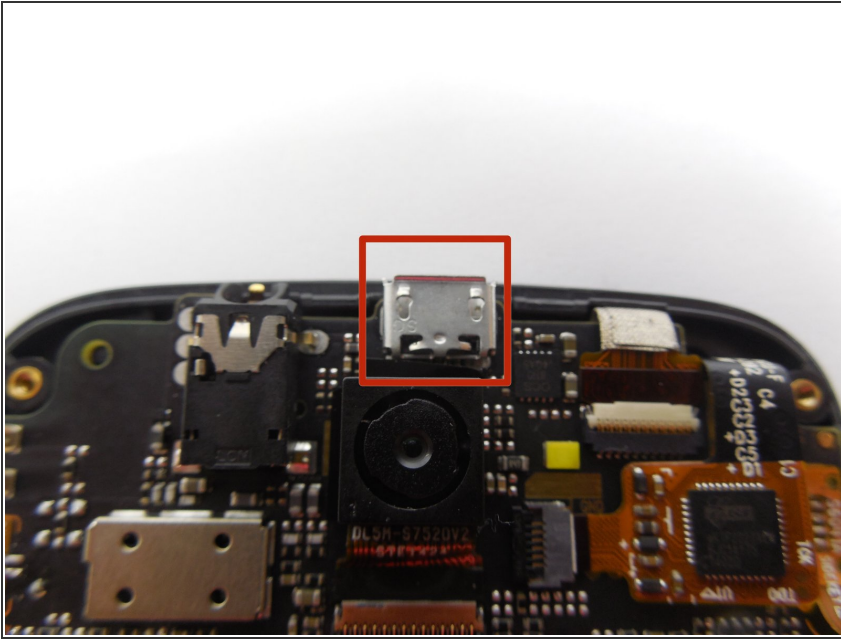
Step 4 — Charger Port



- Once phone is completely disassembled, you will take your soldering iron to the charger port to remove it.
- i* Be careful to make sure you take a soldering wick to absorb the solder.
- ⚠ Touching other pieces on the motherboard may alter phones capabilities!

This document was generated on 2019-09-23 02:37:21 PM (MST).

Step 5



- Once the old charger port is removed, take the new one and place it in the same spot. You will need to solder this piece to ensure that it stays connected.

To reassemble your device, follow these instructions in reverse order.