



# BLU Dash 3.5 Camera Replacement

Replace a malfunctioning camera on the Blu Dash 3.5.

Written By: victoria dorony



# INTRODUCTION

These easy and brief steps will help you replace a broken camera on a BLU Dash 3.5 smartphone.



## TOOLS:

- [Phillips #000 Screwdriver](#) (1)
- [iFixit Opening Tools](#) (1)
- [Tweezers](#) (1)




## PARTS:

- [Blu Dash 3.5 Replacement Camera](#) (1)

## Step 1 — Battery



- Start by locating the slot on the lower right corner of the device.
- Insert the opening tool into the slot.
- Pry the back cover off. Once the corner is off, continue around the perimeter of the phone pulling the back off with your fingers.

 A fingernail can work to open the back in place of an opening tool.

## Step 2



- Locate the indentation at the bottom of the battery.
- Insert your thumb and pull the battery out.

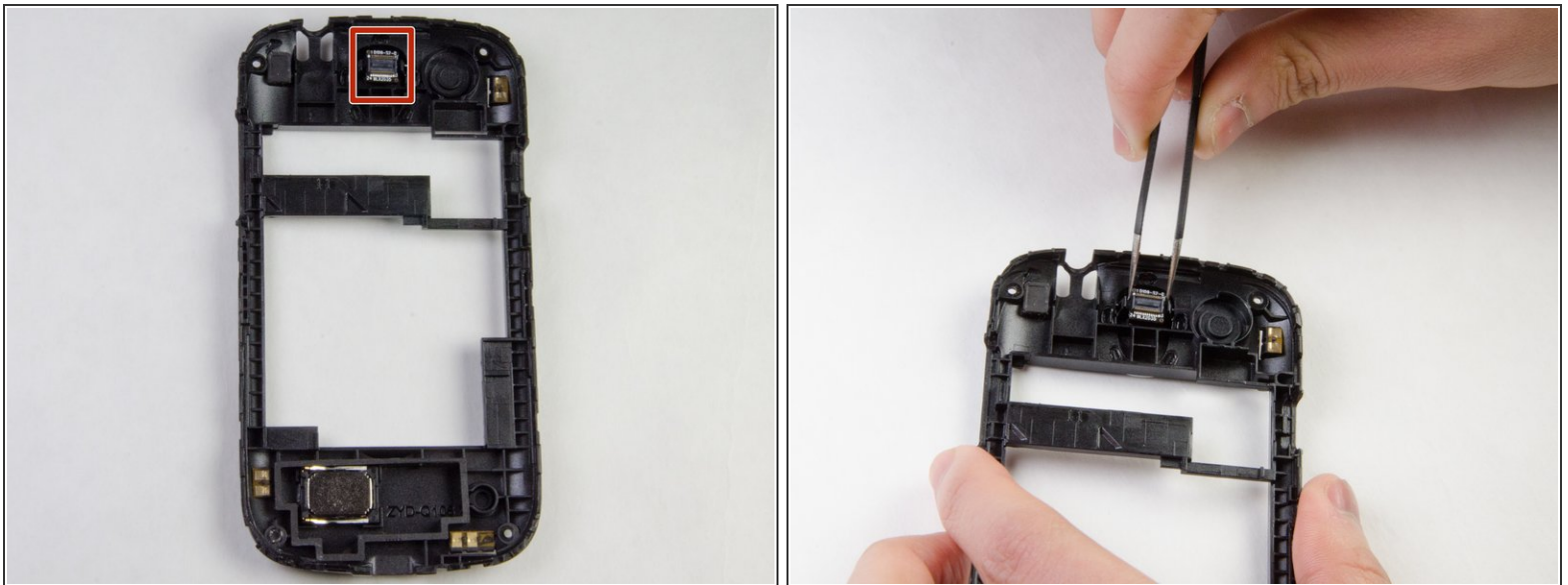


## Step 3 — Camera



- Use the J000 Phillips screwdriver to remove the four 4.5 mm screws from the corners of the interior back panel.
- Use the opening tool to pry open the plastic back panel to expose the motherboard.

## Step 4



- Locate camera module on inside of the black plastic back panel
- ☞ Note the orientation of the camera.
- Use tweezers to carefully remove the camera.

To reassemble your device, follow these instructions in reverse order.