



# BLU Dash Music 4.0 Micro USB Port Replacement

If you have a damaged or defective charging port, this guide will teach you how to replace it.

Written By: Lioma Terrero Soto





## TOOLS:

- [iFixit Opening Tools](#) (1)
- [Phillips #0 Screwdriver](#) (1)
- [Soldering Iron](#) (1)
- [Solder](#) (1)



## PARTS:

- [Blu Dash 4.0 charging port](#) (1)

## Step 1 — Remove Back Cover



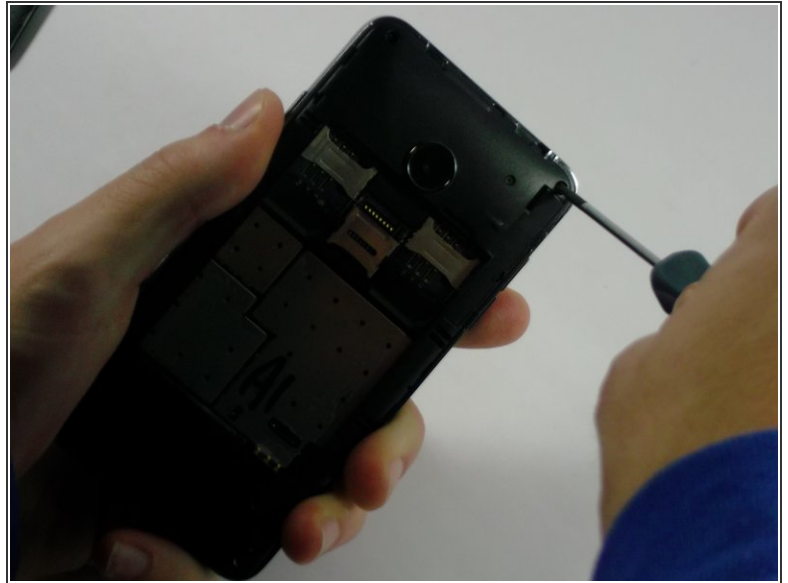
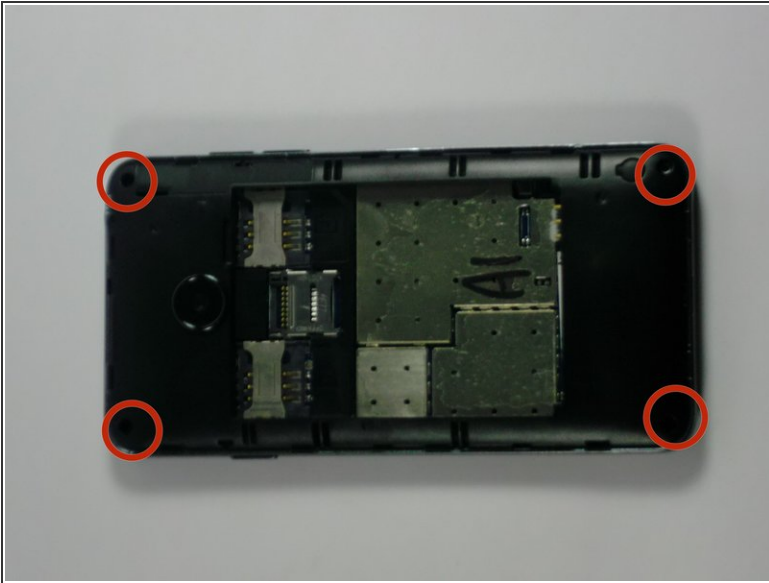
- Use the plastic opening tool or your fingernail to pry off the back cover.

## Step 2 — Remove Battery



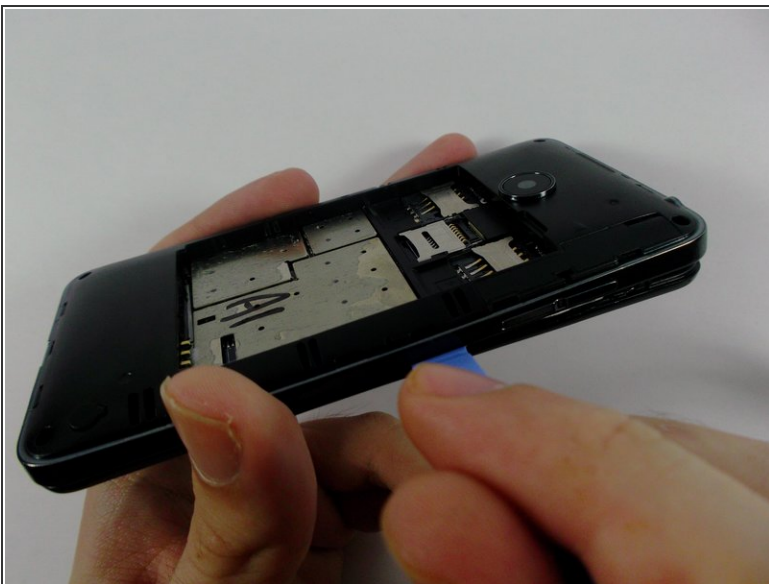
- Use the plastic opening tool or your fingernail to pry off the battery from the top right corner.

### Step 3 — Remove Screws



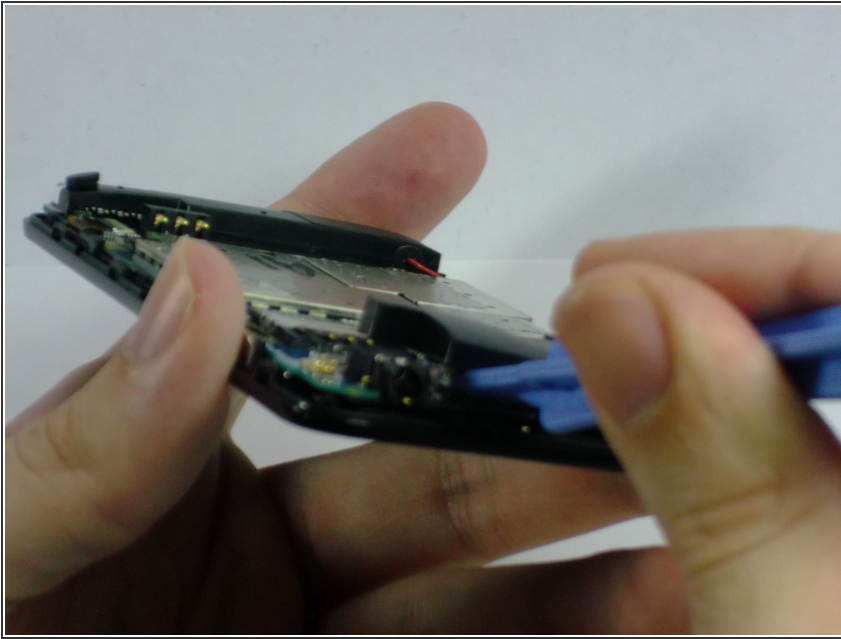
- Use a screwdriver to remove each of the four screws.

### Step 4 — Remove Inner Cover



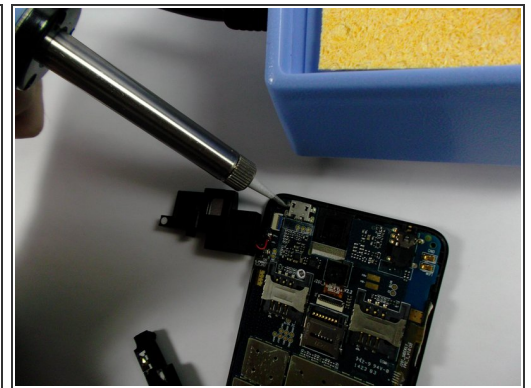
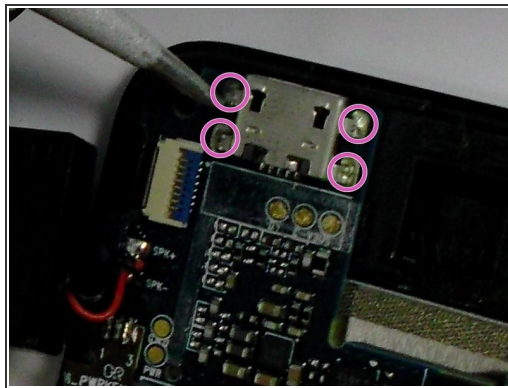
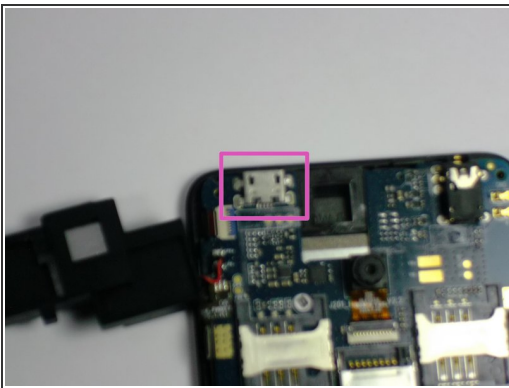
- Take the plastic opening tool and insert it in the crease between the front screen and the inner back cover.
- Slide the plastic opening tool along the edge of the phone such that the two covers are pulled apart.

## Step 5 — Remove Black Pad



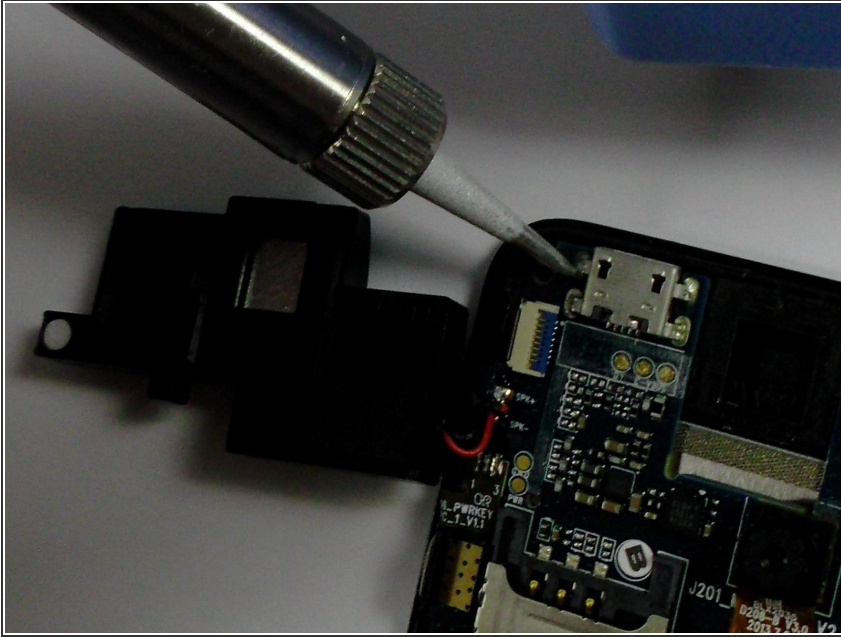
- Insert the plastic opening tool between black pad and the circuit board. Then gently pry off the black pad.
- This will make the connections of the charging port more accessible.

## Step 6 — Remove Solder Connections



- Using a soldering iron and a pair of pliers, melt the four soldering connections around the charging port.
- Quickly pull off the current charging port while the soldering connections are still soft.

## Step 7 — Mount New Charging Port



- Mount the new charging port so that the four prongs of the charging port line up with the four soldering connections.
- Using a soldering iron, solder the connections in place.

To reassemble your device, follow these instructions in reverse order.