



# BLU Life XL Charging Port Replacement

Blu Life XL (L050U) Charging Port Replacement.

Written By: Euan Gordon



---

## INTRODUCTION

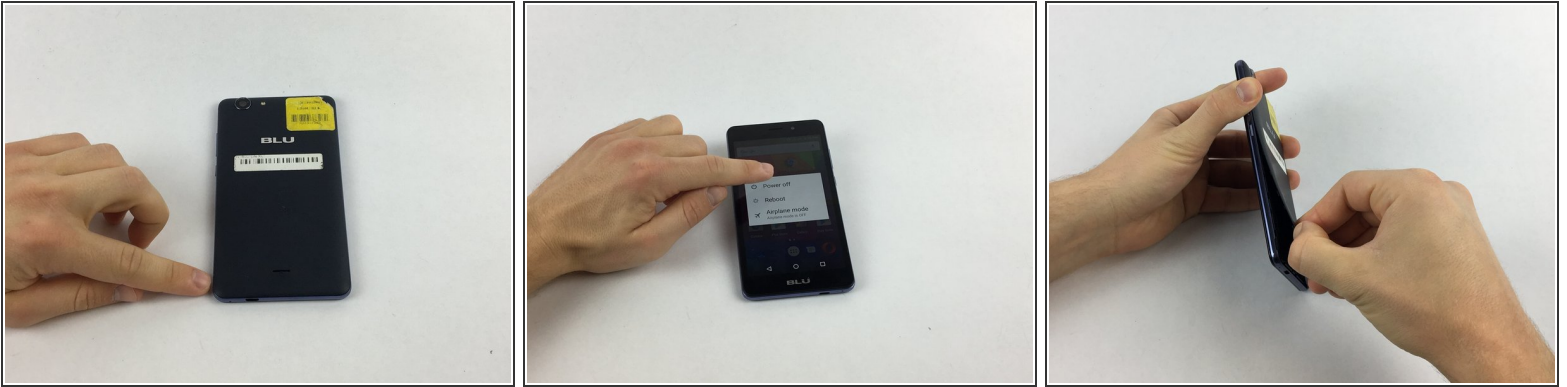
Replacing the charging port on your BLU Life XL device is an effective method of attempting repair of charging issue. This guide shows how one may replace the internal lower PCB unit, where the charging port is located.



### TOOLS:

- [iFixit Opening Tools](#) (1)
  - [JIS Driver Set](#) (1)
  - [Phillips #000 Screwdriver](#) (1)
-

## Step 1 — Battery



- Turn the device off by holding down the power button for up to 5 seconds and then tapping the "Power off" button on the screen.
- Remove the rear cover using your hands at the lip on the device back cover. No tools required.

## Step 2



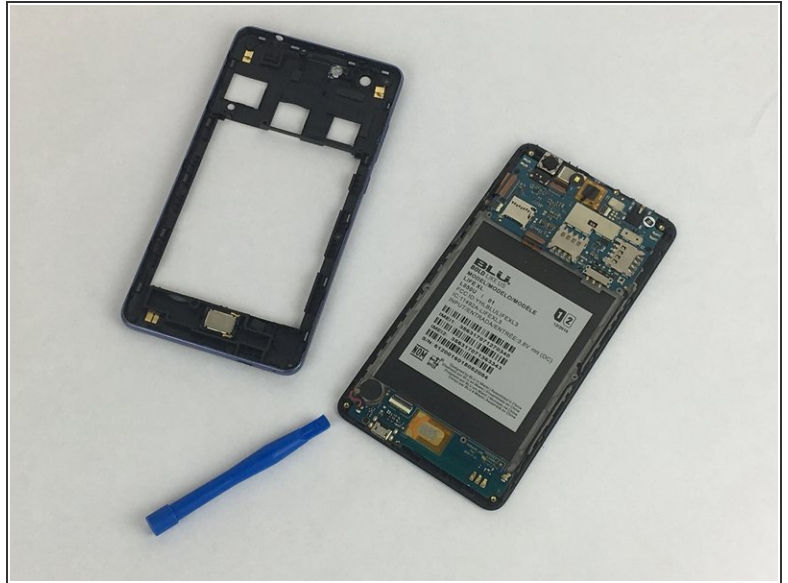
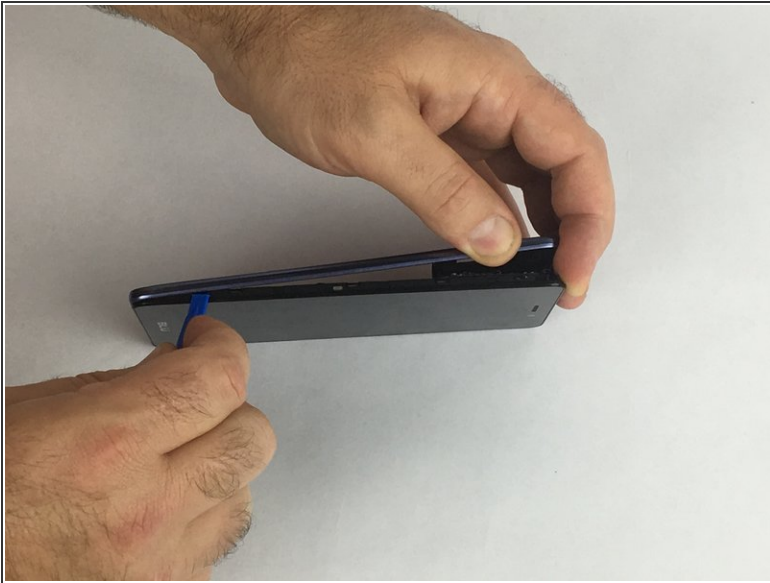
- Remove the old battery.
- ⓘ For optimal performance, calibrate your newly installed battery: Drain battery below 10%, then charge uninterrupted to 100%.

## Step 3 — Charging Port



- Remove twelve 3mm Phillips #000 screws from the rear plate.

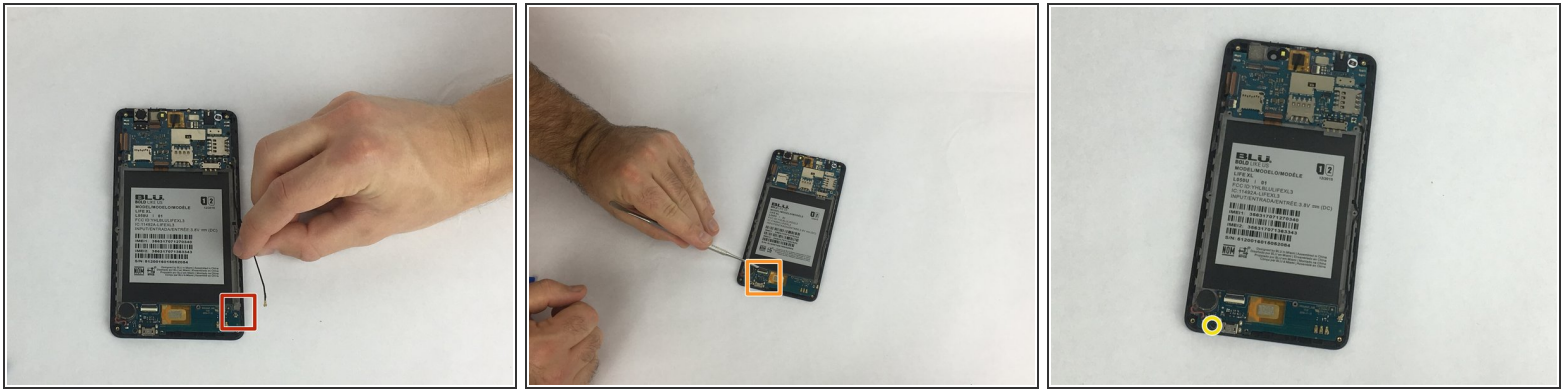
## Step 4



- Remove the plastic frame on the device using an opening tool.
- Firmly press the tool into the gap between the front glass and rear plate.
- ⓘ The gap is located on all sides of the phone.
- Run the tool through this gap along the entire edge of the phone to separate the plastic frame from the phone.

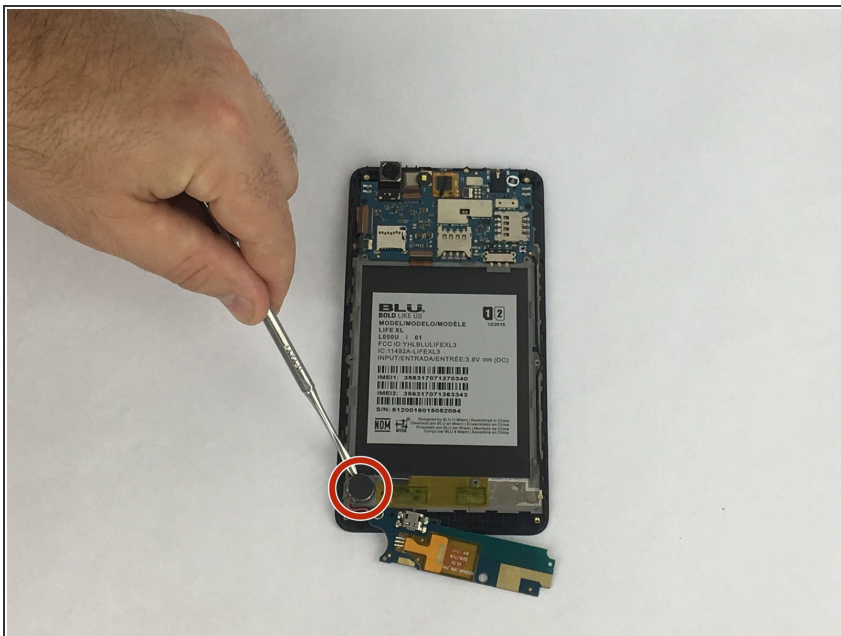


## Step 5



- Disconnect lower PCB antenna connection.
- Disconnect lower PCB data cable connection.
- Remove the single JIS #000 3mm screw from the PCB board.

## Step 6



- Remove the haptic motor at bottom left of the device. This will require a prying tool, as the motor is glued to the device.

To reassemble your device, follow these instructions in reverse order.