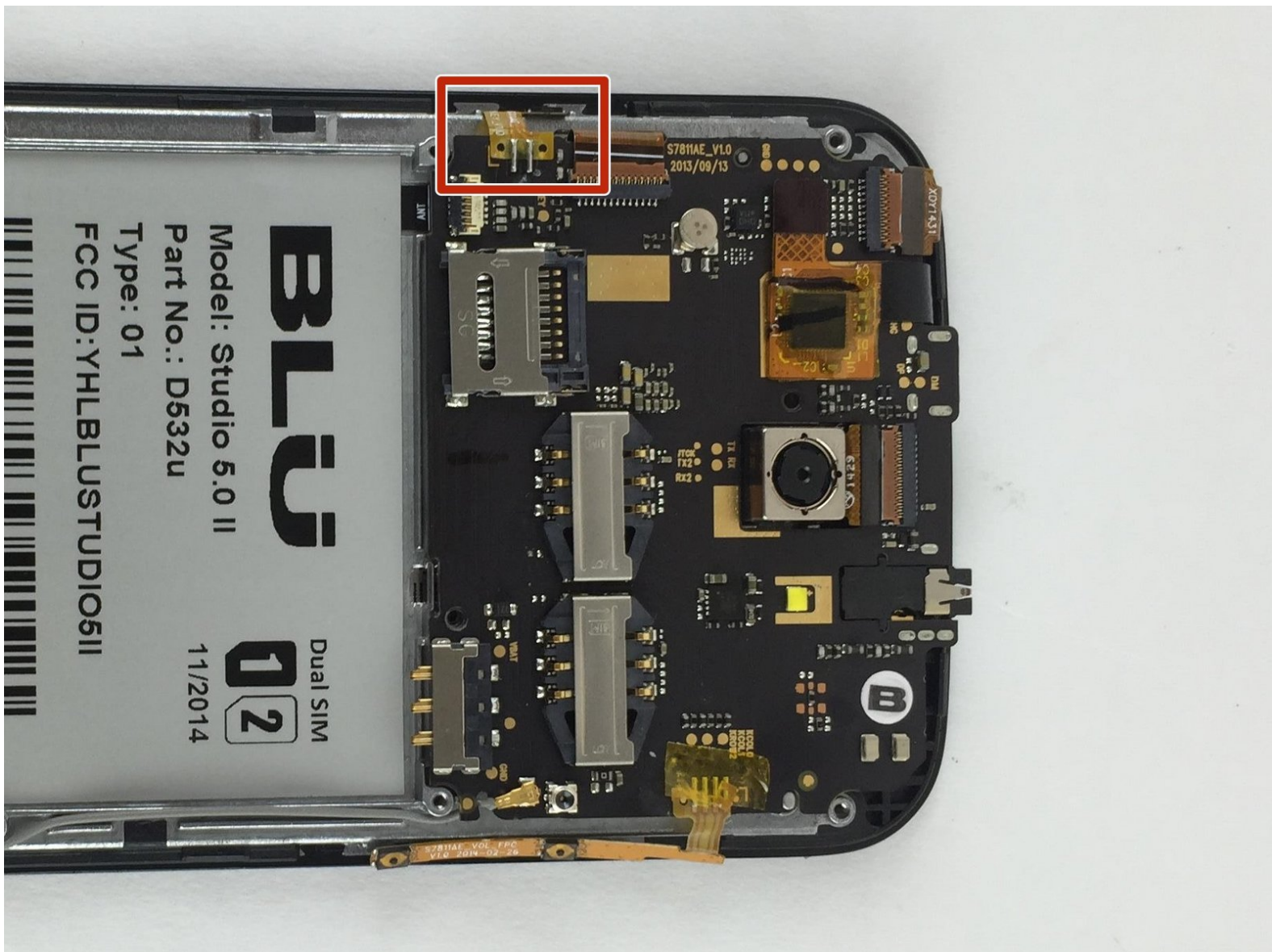




BLU Studio 5.0 II Power Button Replacement

Use this guide to replace the power button.

Written By: Ricardo Sarabia



INTRODUCTION

This guide will teach you how to replace the power button on your BLU Studio 5.0 II phone.

TOOLS:

- [Phillips #00 Screwdriver](#) (1)
 - [Phillips #000 Screwdriver](#) (1)
 - [Spudger](#) (1)
-

Step 1 — Battery



- ⚠ Turn off your phone before disassembling the device.
- Locate the small opening on the bottom corner of the back case.

Step 2



- Use your finger to open the back case by slowly pulling it on the open slot.
- Once the case is lifted on the corner, slide your finger along the edge of the phone to remove the rest of the case.

Step 3



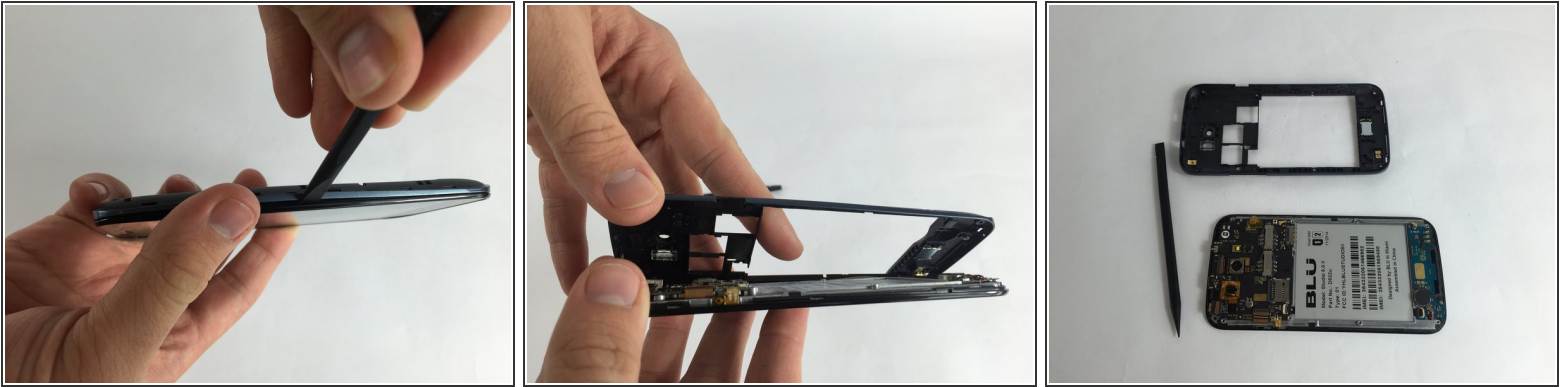
- Locate the opening slot at the bottom of the battery.
- Use your finger to lift the battery and remove it from the case.

Step 4 — Back Case



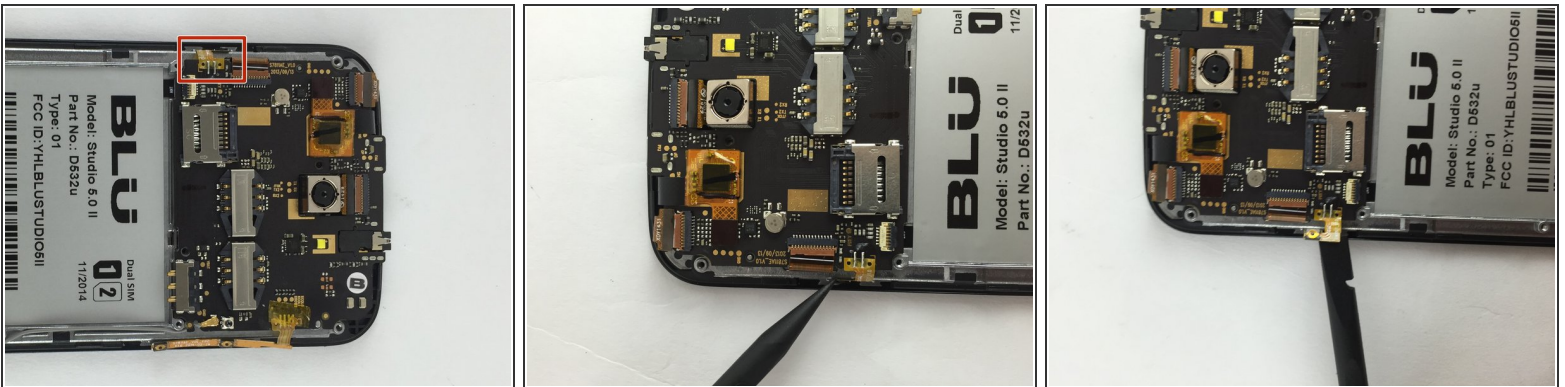
- Locate the four 3mm screws on each side of the back panel.
- Use a Phillips #00 screwdriver to remove the eight screws.

Step 5



- Carefully use a spudger to start opening the back case by inserting it between the black and blue lines on the side of the phone.
- With the help of your fingers, continue to remove the back case by sliding it through the opening.

Step 6 — Power Button



- Locate the power button on the left side of the motherboard.
- Using a spudger or a pair of tweezers, carefully remove the power button yellow film attached to the motherboard.

To reassemble your device, follow these instructions in reverse order.