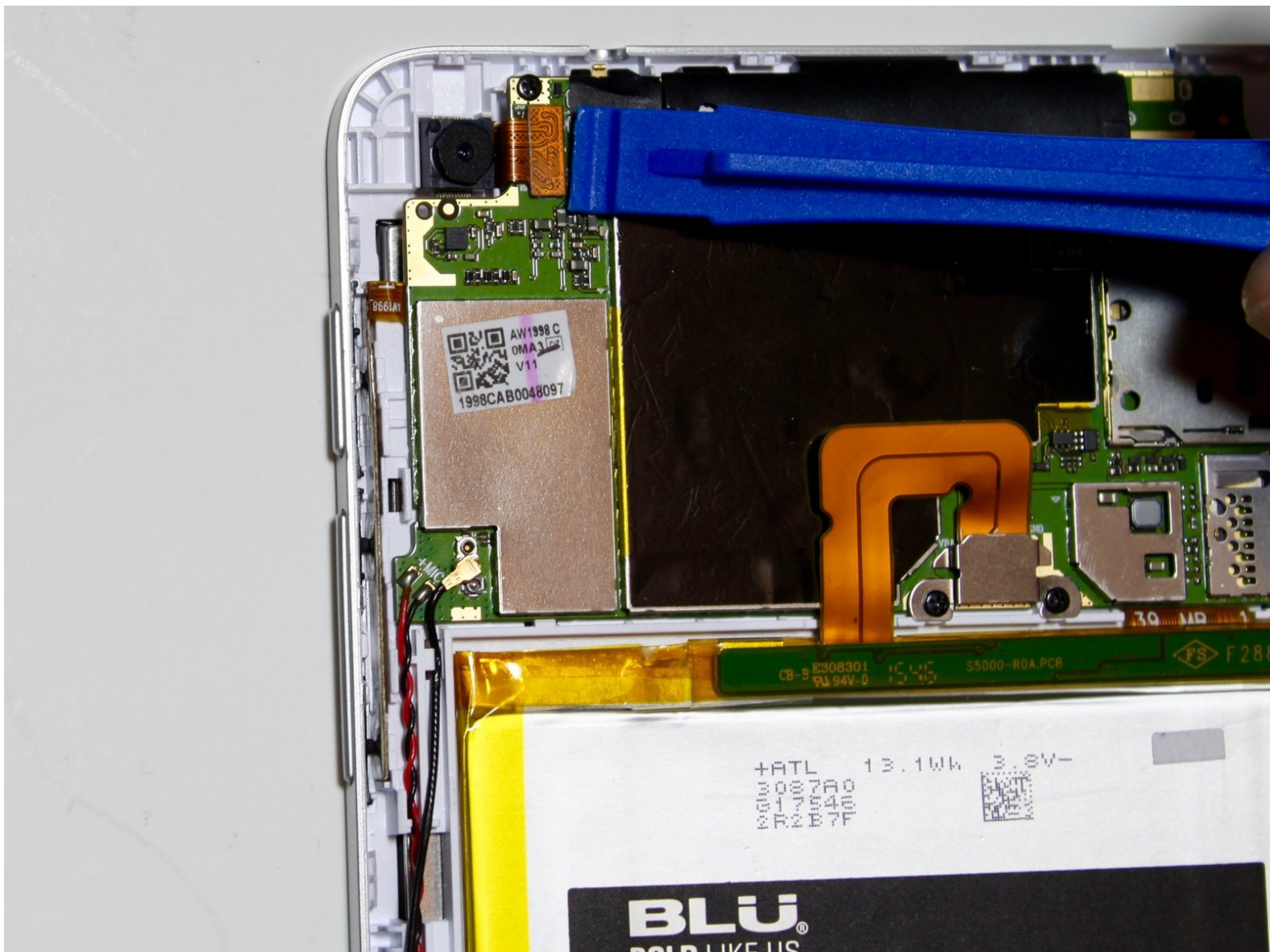




BLU Studio 7.0 II Rear Camera Replacement

Replace your broken camera with a new one and start snapping pictures again.

Written By: Abby



INTRODUCTION

This guide provides steps on how to replace the rear camera of the Blu Studio 7.0 II.



TOOLS:

- [iFixit Opening Tools](#) (1)
 - [Heavy-Duty Spudger](#) (1)
 - [Precision Tweezers Set](#) (1)
-

Step 1 — Back Cover



- Locate the seam between the black and silver pieces of the phone.
- Insert a plastic opening tool into the seam and firmly pry the black back piece away from the silver front piece.
- ❗ To create the initial separation for the plastic opening tool, you may need to use either a spudger or metal spudger. If you use a metal spudger, be aware this can damage your phone if you aren't careful.

Step 2



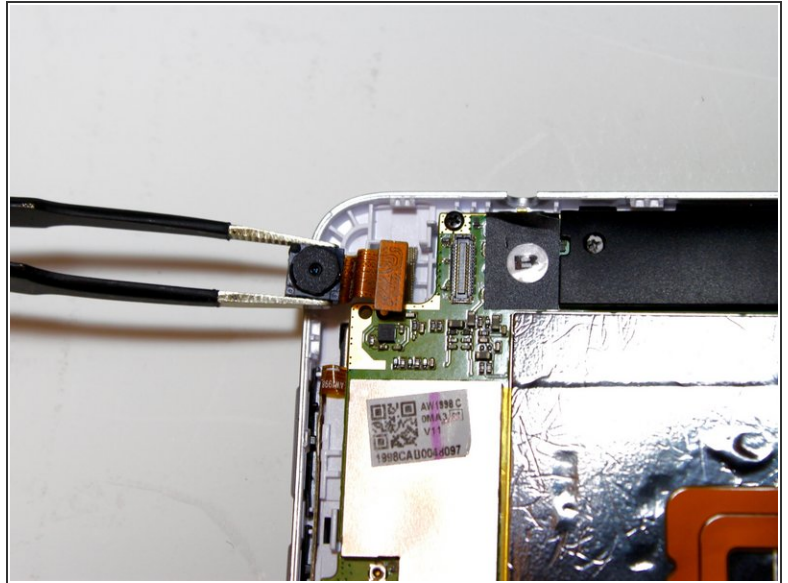
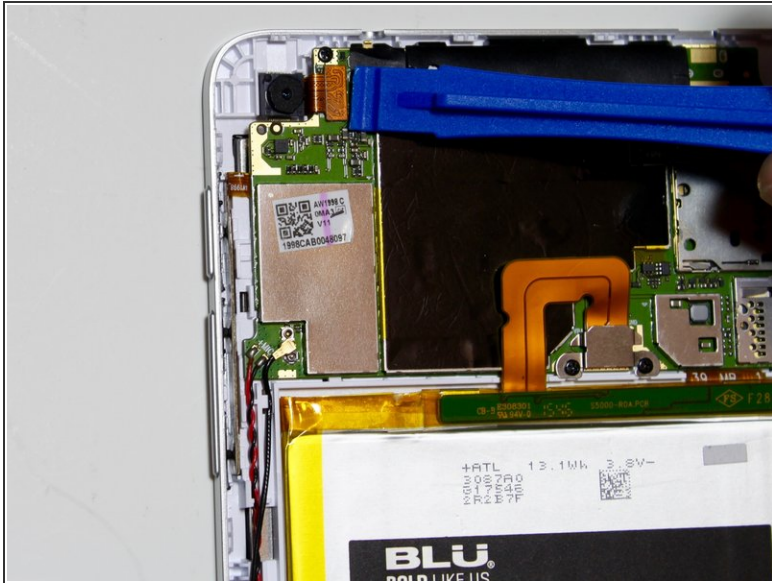
- Work your way around the edge of phone, firmly prying the pieces apart.

Step 3



- ☛ Once the back has been removed, you can snap the new one into place by pressing firmly around the edges with your fingers.

Step 4 — Rear Camera



- The camera is located in the top left of the frame (if the screen is on the table and the top of the phone is farthest from you).
- To remove it, grip the lens itself (the black part) with a pair of precision tweezers and lift straight up.
- ⓘ The camera is connected to the motherboard with a simple clip connection. This will release as you pull.

To reassemble your device, follow these instructions in reverse order.