



# BLU Studio G Antenna Replacement

This guide will show you how to replace the antenna in your BLU Studio G smartphone.

Written By: Christian Perez



## INTRODUCTION

This guide shows the steps to fix a BLU Studio G smartphone that is having connectivity problems found to be caused by a faulty antenna. The antenna is integrated into the motherboard, so a full motherboard replacement will be needed. If you are having problems with your connection to data or spotty reception, a motherboard replacement may refresh your broken phone.

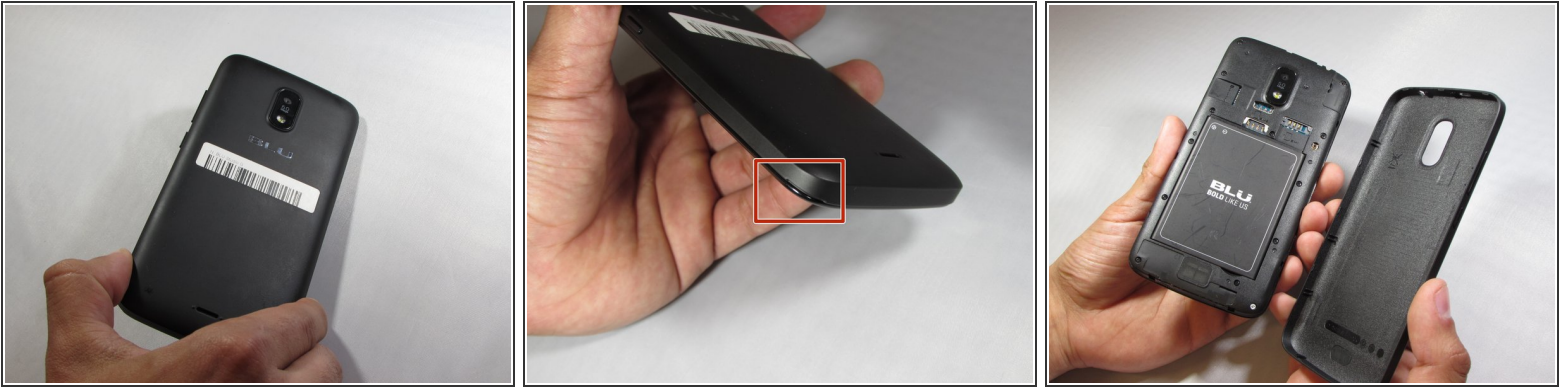


### TOOLS:

- [Phillips #0 Screwdriver](#) (1)
- [Metal Spudger](#) (1)
- [Screwdriver](#) (1)
- [Precision Tweezers Set](#) (1)
- [Spudger](#) (1)



## Step 1 — Motherboard Prerequisite



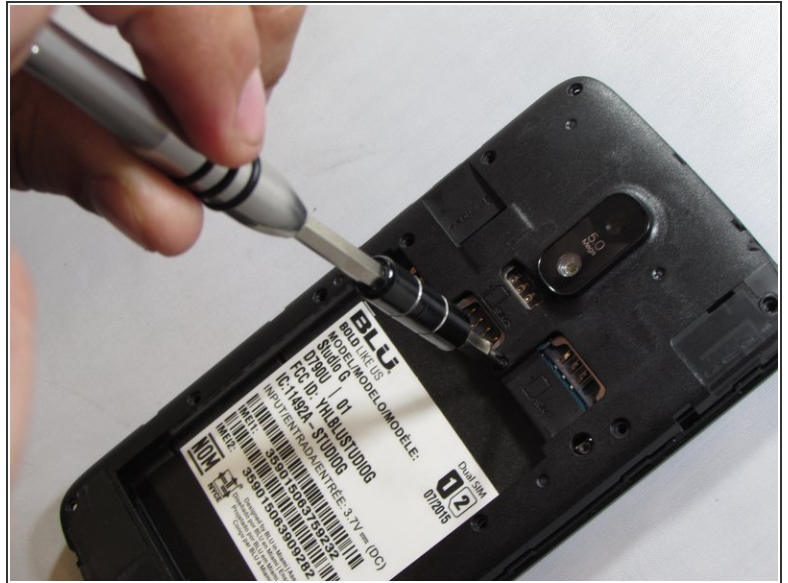
- To remove the back cover, turn the device over, locate the safety indented notch on the bottom left corner as the screen is facing down.
- Using your finger (or spudger), prop upwards to detach the back cover properly from the rest of the device.

## Step 2



- Locate the notch at the bottom of the battery for safe removal.
- Carefully lift battery from the notch making sure not to puncture the battery rubber casting.

## Step 3



- Unscrew the 13 Phillips #0 screws from the back of the phone.

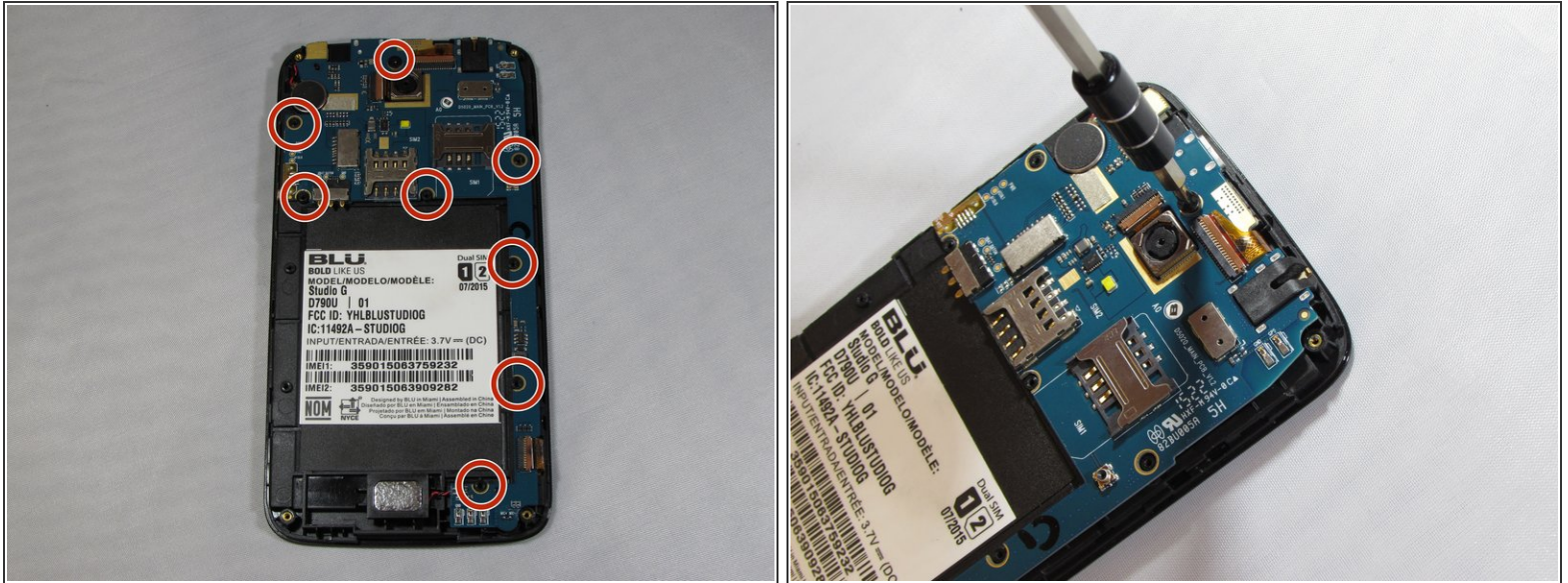
## Step 4



- To remove the back panel, slide the metal spudger into 3 notches on left and right side outside edges of the device.
- With some slow but strong pressure insert and dislodge the panel from the rest of the device. These are tough but small clips that hold together the back panel.

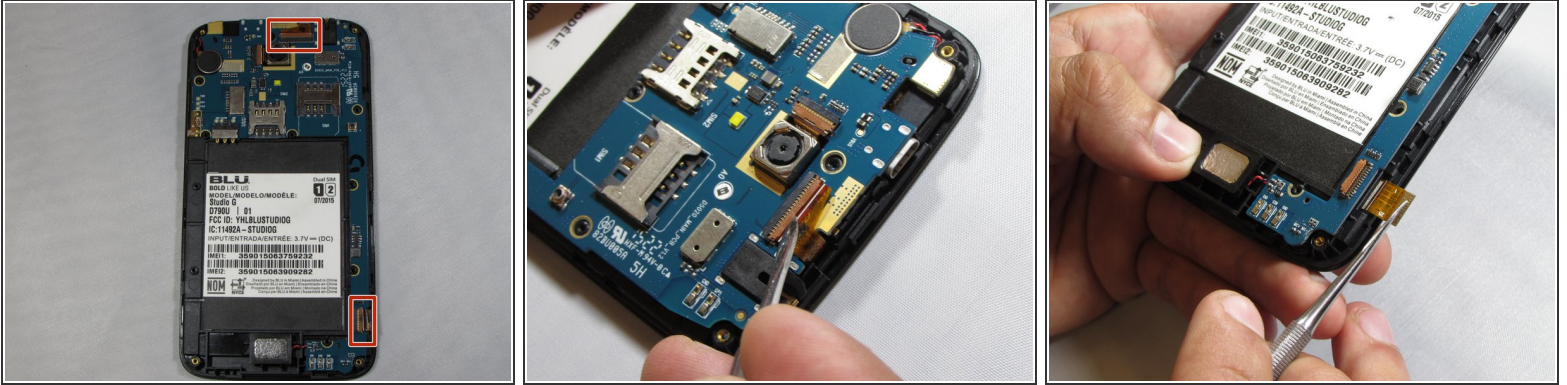


## Step 5



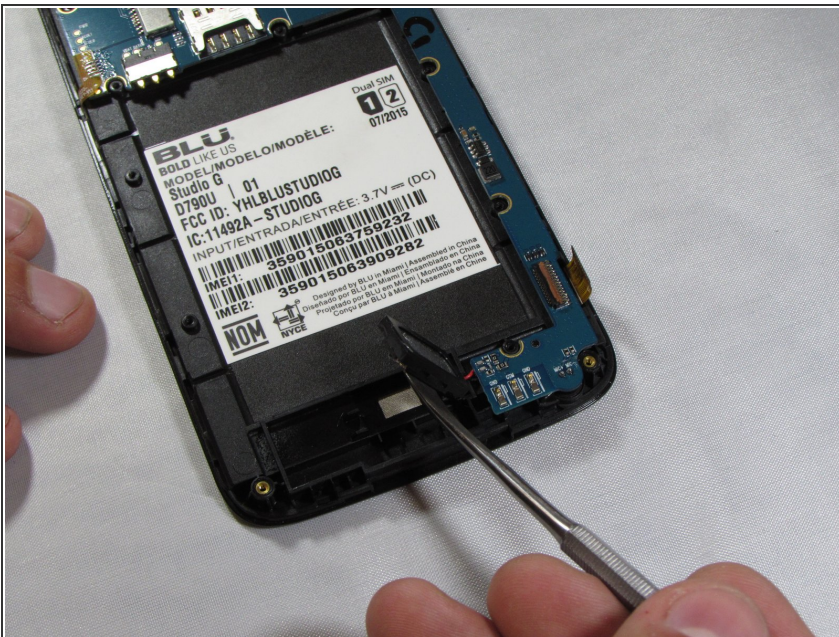
- Remove all 8 3.175 mm screws that secure the motherboard in place.
- Remove by turning counter clockwise using a Phillips #0 bit with the correct screwdriver using medium/ firm pressure, assuring that you don't strip the screws.
- Set aside

## Step 6



- Locate the two connector clamps on the motherboard.
- Carefully place the tip of a precision tweezer or metal spudger under the short light brown plastic clamp. This will release the connectors.
- Gently pull out the connectors from the clamp inserts by pulling slowly away from of device using precision tweezers.

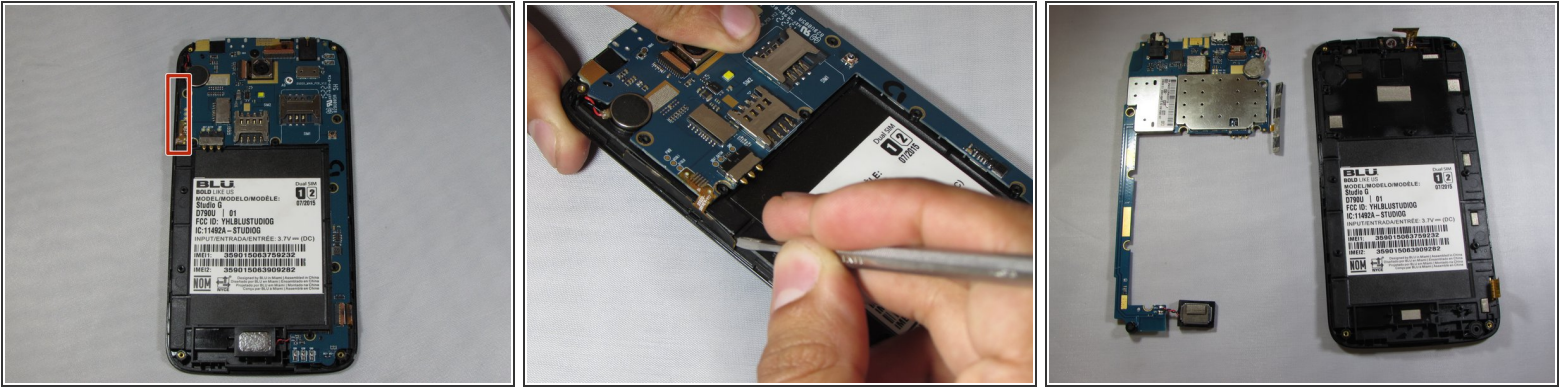
## Step 7



- Locate the speaker on the bottom of the device and slowly pry upwards and to the right as its wired to the motherboard.



## Step 8



- Locate the volume button strip on the left side of the device and slowly pry outwards from one end to the other from the device.
- Carefully pull over the motherboard.

## Step 9 — Antenna



- The antennae will be soldered directly to the motherboard which will be replaced.

To reassemble your device, follow these instructions in reverse order.