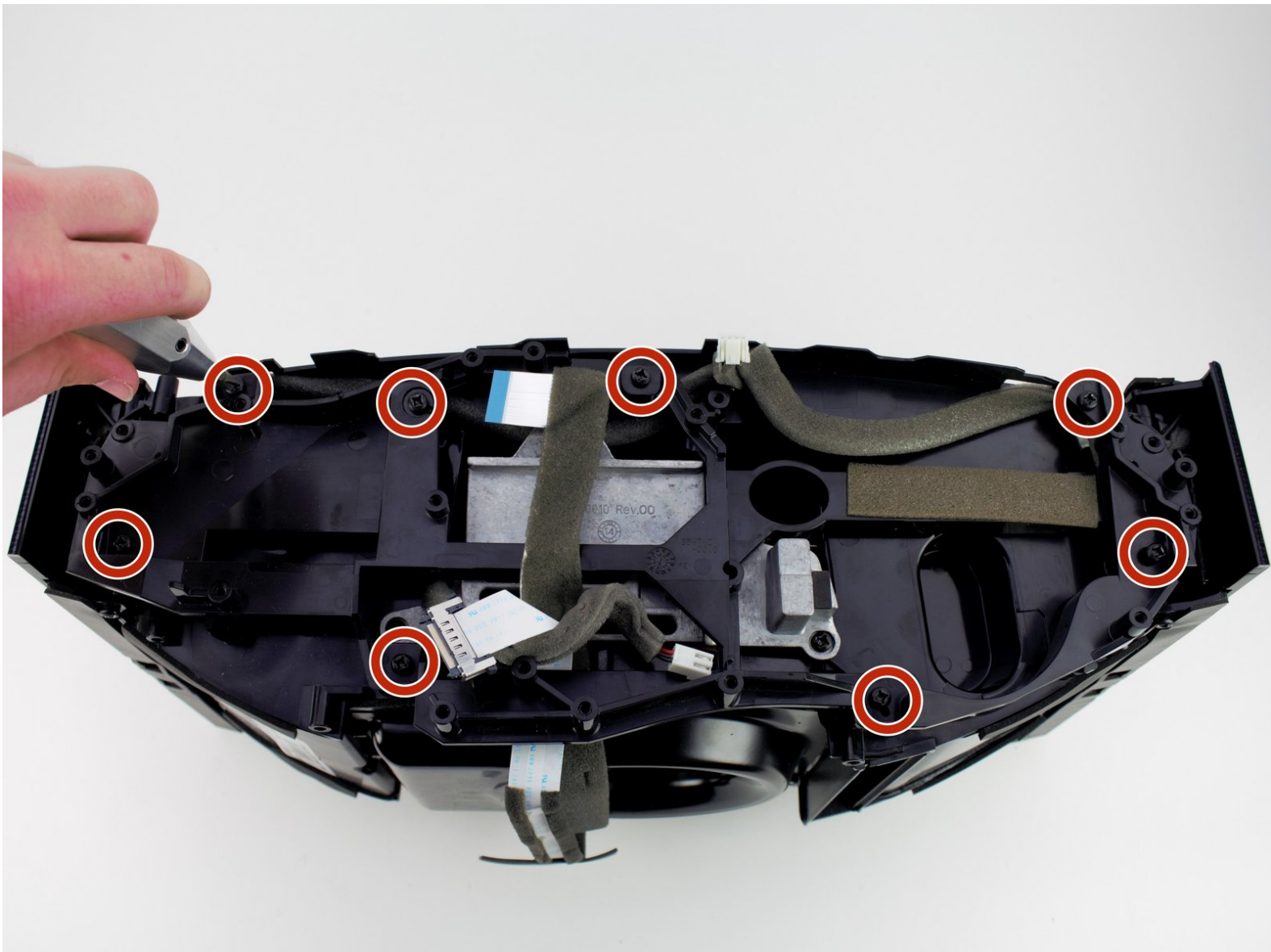




# BOSE SoundTouch 30 Speakers Replacement

How to replace the BOSE SoundTouch 30 speakers.

Written By: Brennen Irey



---

## INTRODUCTION

This guide will go over how to remove the two small speakers from the device.



### TOOLS:

- [Phillips #2 Screwdriver](#) (1)
  - [1 x PH0 screw bit](#) (1)
-

## Step 1 — Base Plate



- Remove the four 15.5 mm PH2 screws securing the base plate to the device.

## Step 2 — Power Supply



- Remove the six 15.5mm PH2 screws securing the grille and rear panel to the device.

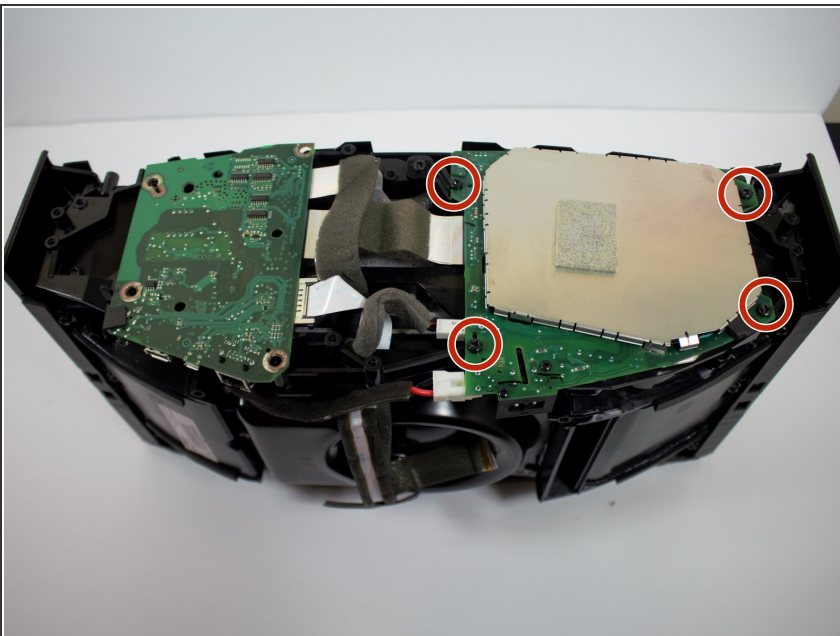
### Step 3



- Remove the grille and rear panel by grabbing the corners and pulling upwards and outwards.

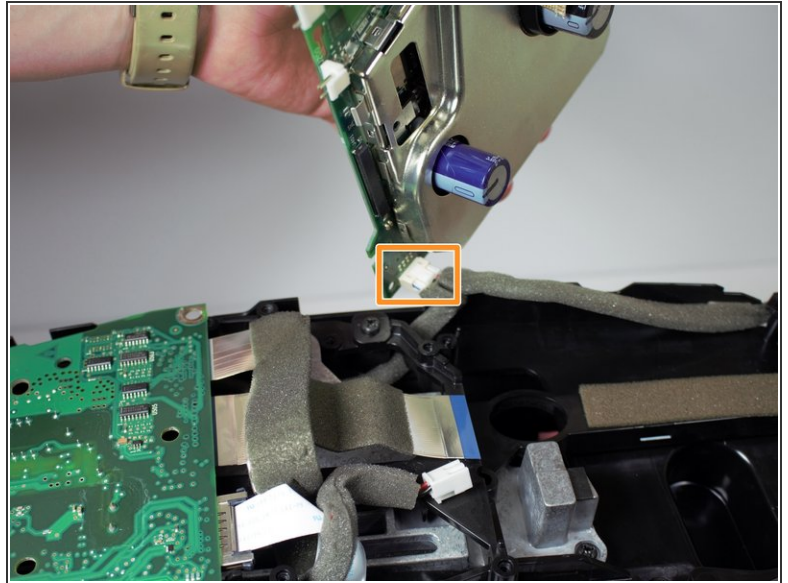
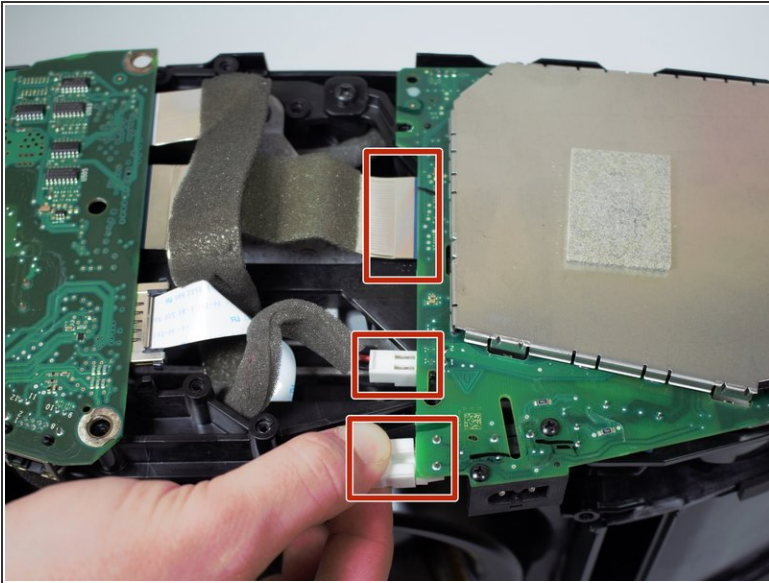
⚠ There is a small ribbon cable that connects the display assembly to the body of the device. Make sure to disconnect the cable before pulling the grille all the way off or else the cable could snap.

### Step 4



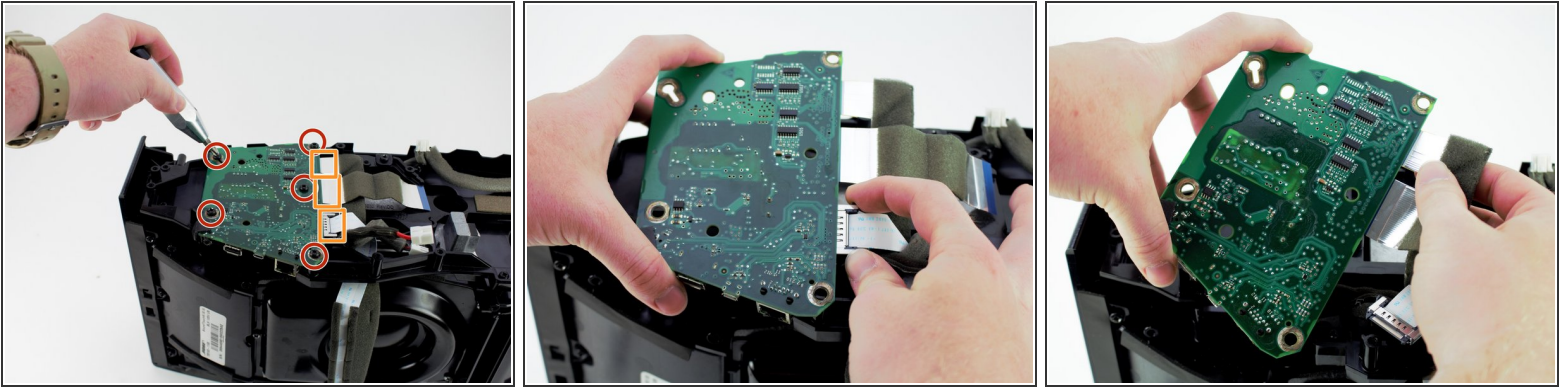
- Remove all four 15.5 mm PH2 screws holding the power supply down.
- ⓘ The power supply is identified by a green board with a large metal covering.

## Step 5



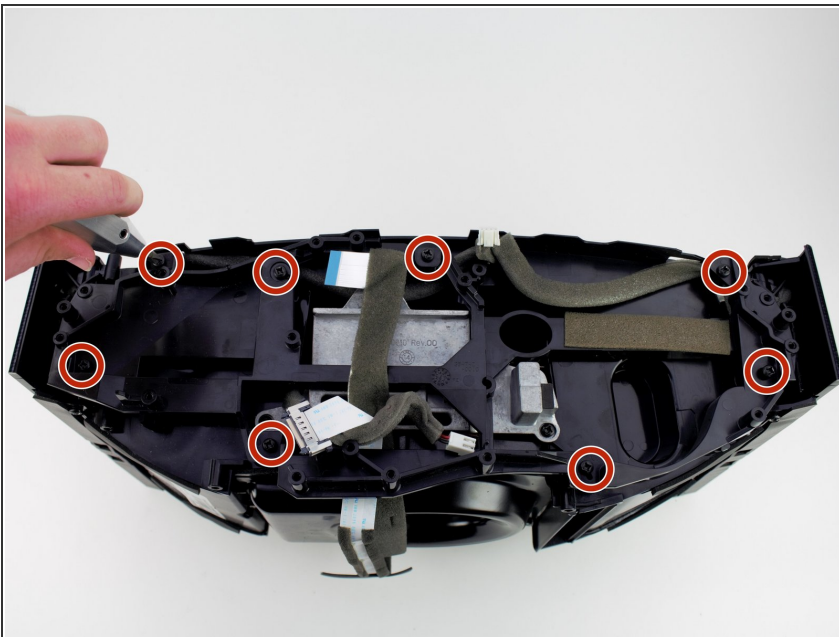
- Disconnect the three cables from the power supply by squeezing the white tabs if present and gently pulling.
- Pick up the power supply and remove the fourth cable from the underside of the power supply.
- Remove the power supply.

## Step 6 — Motherboard



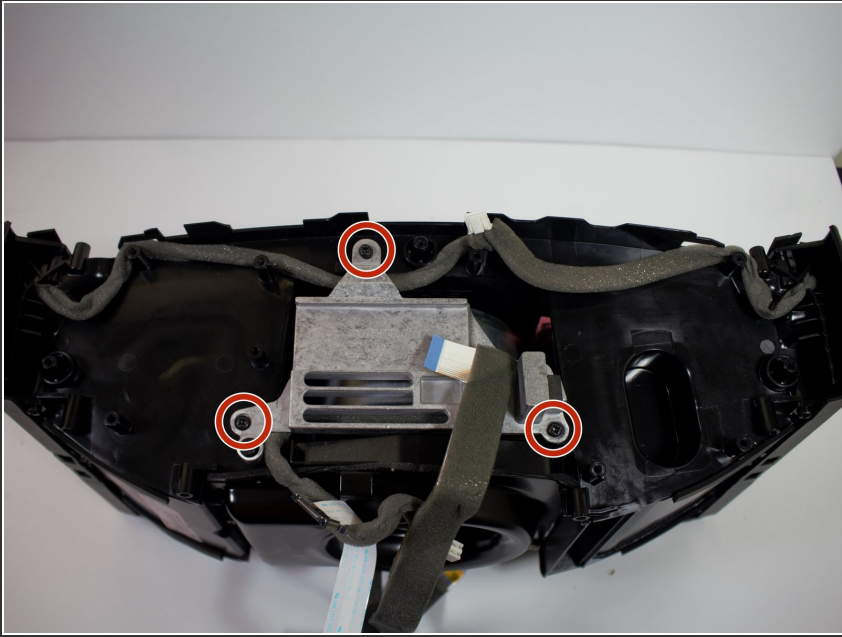
- Remove the five 15.5 mm PH2 screws holding the motherboard down.
  - Remove the three cables from the side of the motherboard by squeezing the grey tabs if present and gently pulling.
  - Remove the motherboard.
- i** The motherboard is identified as the smaller green board with an ethernet, USB Type A, and an auxiliary port.

## Step 7 — Speakers



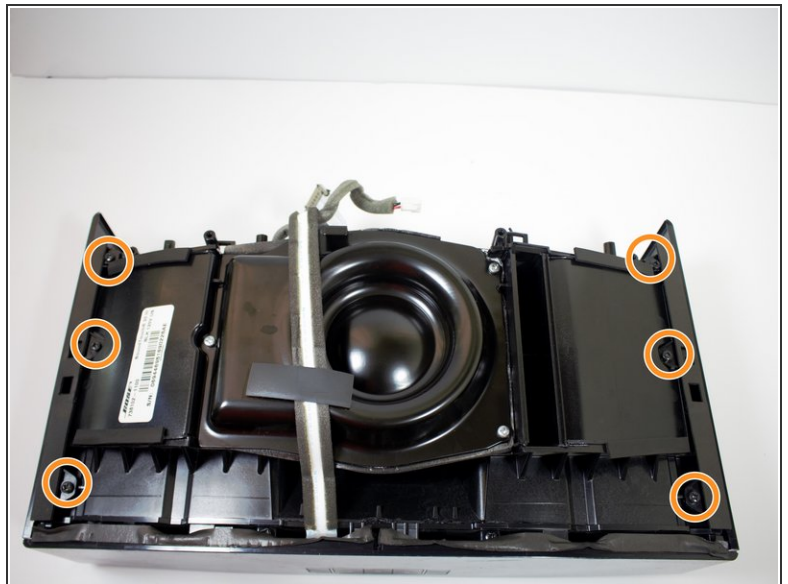
- Remove the eight 15.5 mm PH2 screws holding the plastic insert down.
- Remove the plastic insert and set it to the side.

## Step 8



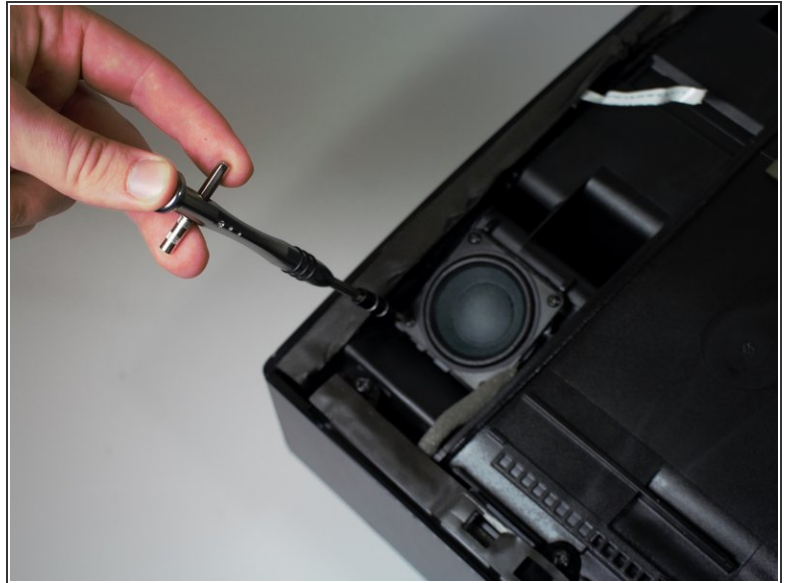
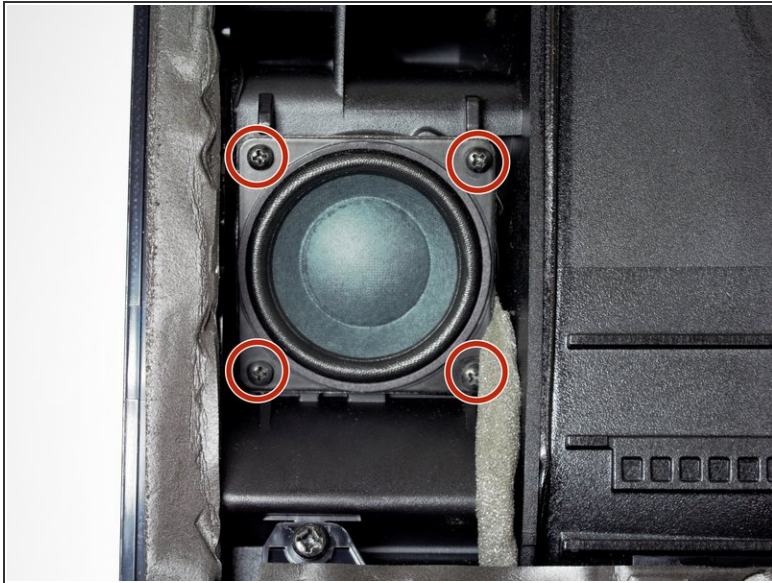
- Remove the three 15.5 mm PH2 screws holding the metal insert down.
- Remove the metal insert and set it to the side.

## Step 9



- Remove the six 15.5 mm PH2 screws securing the side plates to the front of the device.
  - Remove the six 15.5 mm PH2 screws securing the side plates to the back of the device.
- i** The foam lining can cover up a screw. If you can't see all three right away, lift up along the edge of the foam until all screws are found.

## Step 10



- Lay the device on its back and remove the four 11 mm PH0 screws holding the speaker to the device.
- Remove the four 11 mm PH0 from the other speaker as well.
- ⓘ The screws on the speakers can be extremely tight and might require the use of a screwdriver with a large handle.

## Step 11



- Remove the speakers from their housings, making sure to be careful with the wires.
- ⓘ Unhook the speaker wires from the cable stays along the sides and bottom of the device.

To reassemble your device, follow these instructions in reverse order.