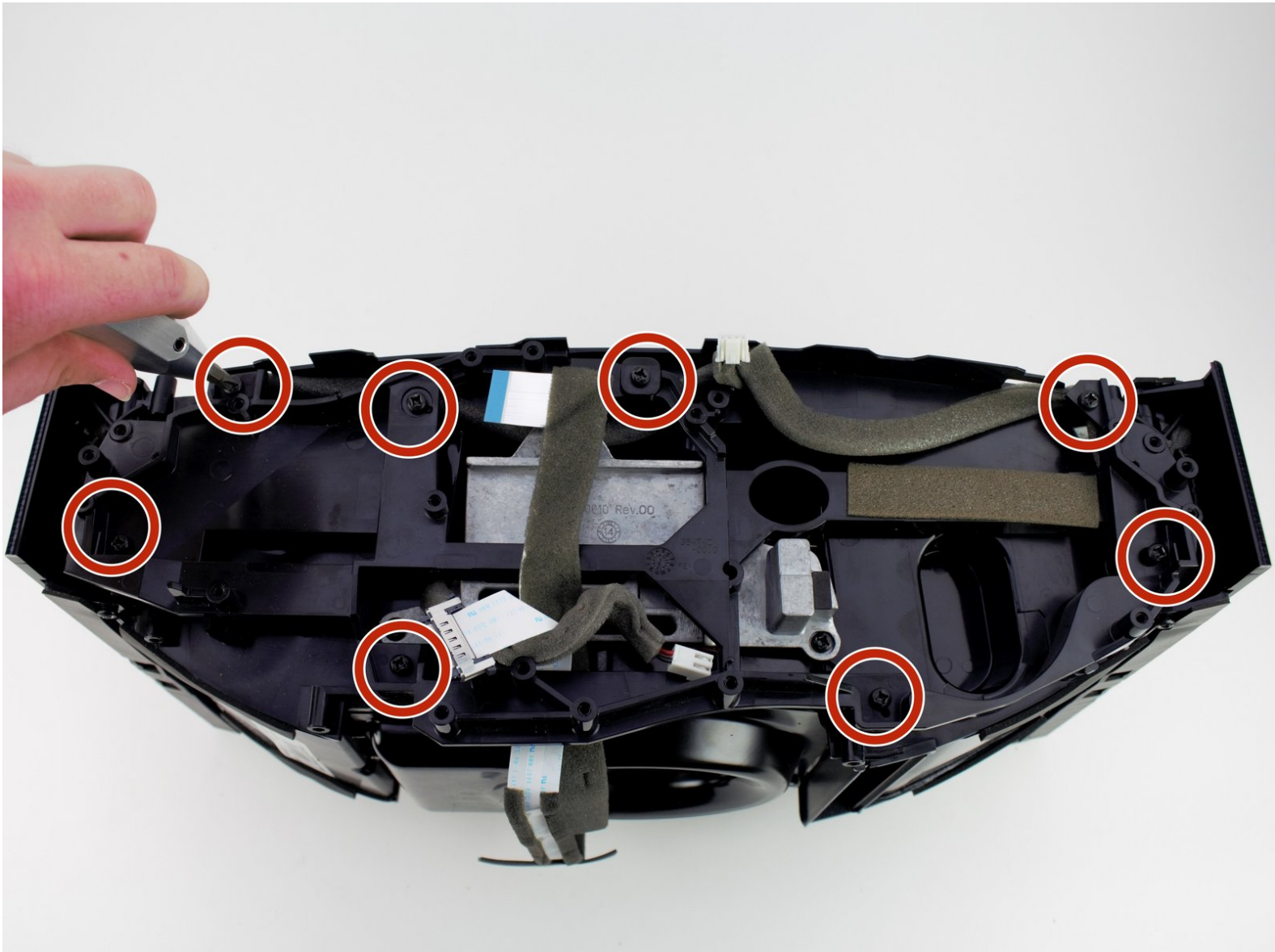




BOSE SoundTouch 30 Subwoofer Replacement

How to replace the BOSE SoundTouch 30 subwoofer.

Written By: Brennen Irey



INTRODUCTION

This guide goes over the steps needed to remove the subwoofer from the device.



TOOLS:

- [Phillips #2 Screwdriver](#) (1)
-

Step 1 — Base Plate



- Remove the four 15.5 mm PH2 screws securing the base plate to the device.

Step 2 — Power Supply



- Remove the six 15.5mm PH2 screws securing the grille and rear panel to the device.

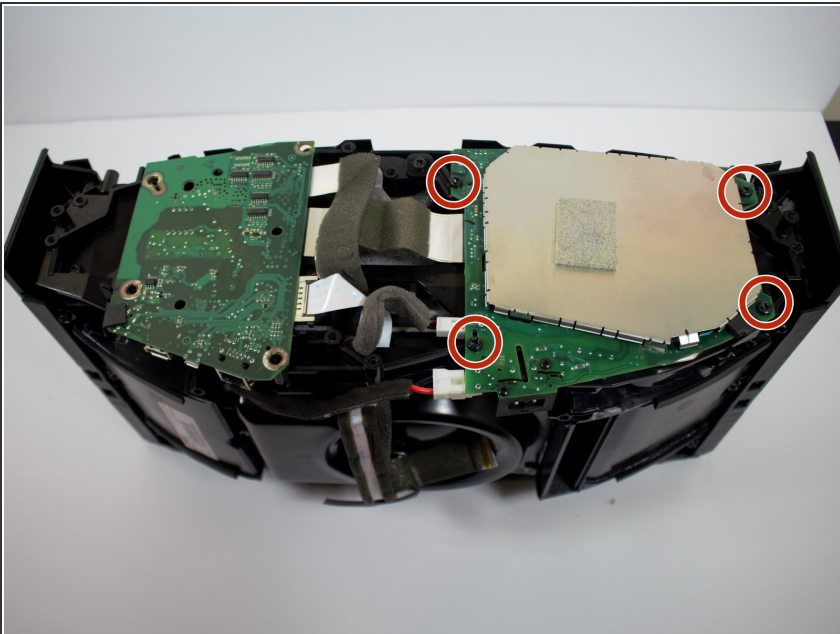
Step 3



- Remove the grille and rear panel by grabbing the corners and pulling upwards and outwards.

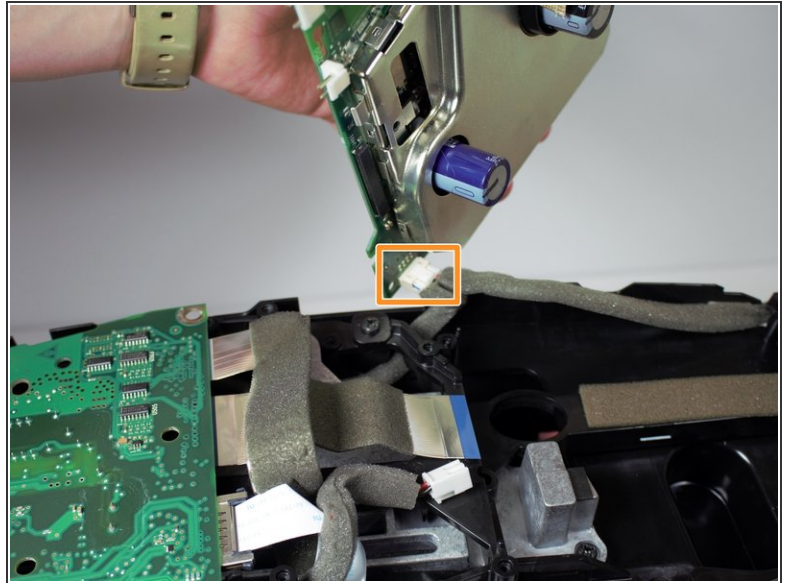
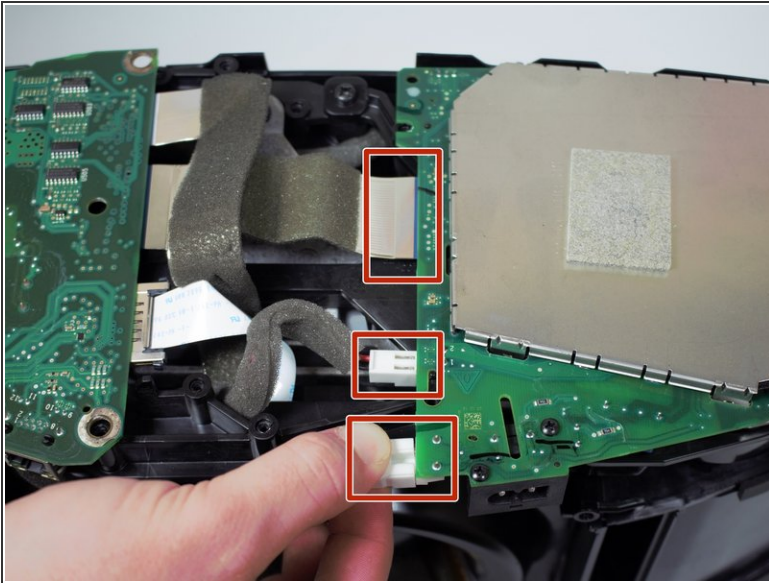
⚠ There is a small ribbon cable that connects the display assembly to the body of the device. Make sure to disconnect the cable before pulling the grille all the way off or else the cable could snap.

Step 4



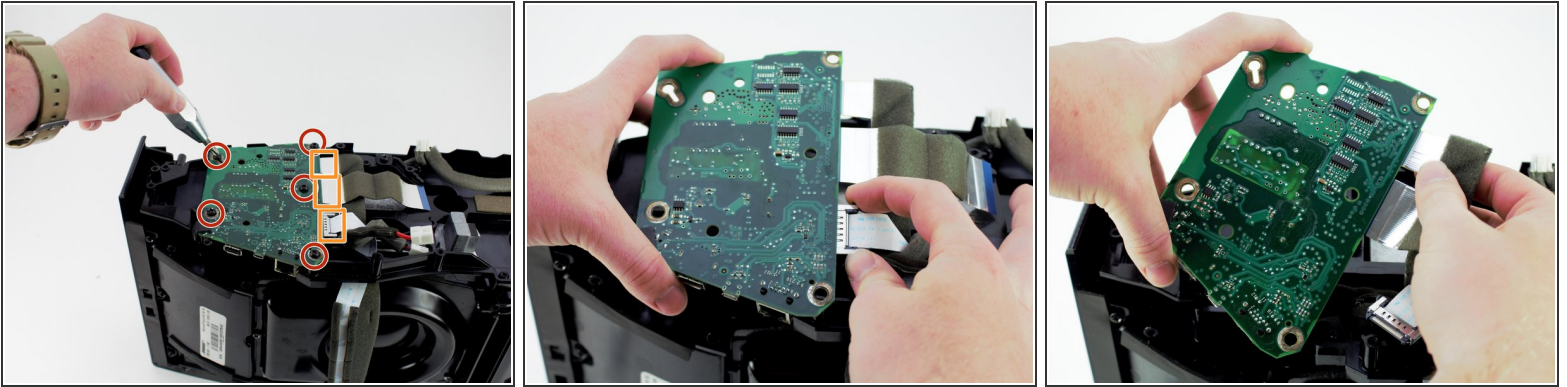
- Remove all four 15.5 mm PH2 screws holding the power supply down.
- ⓘ The power supply is identified by a green board with a large metal covering.

Step 5



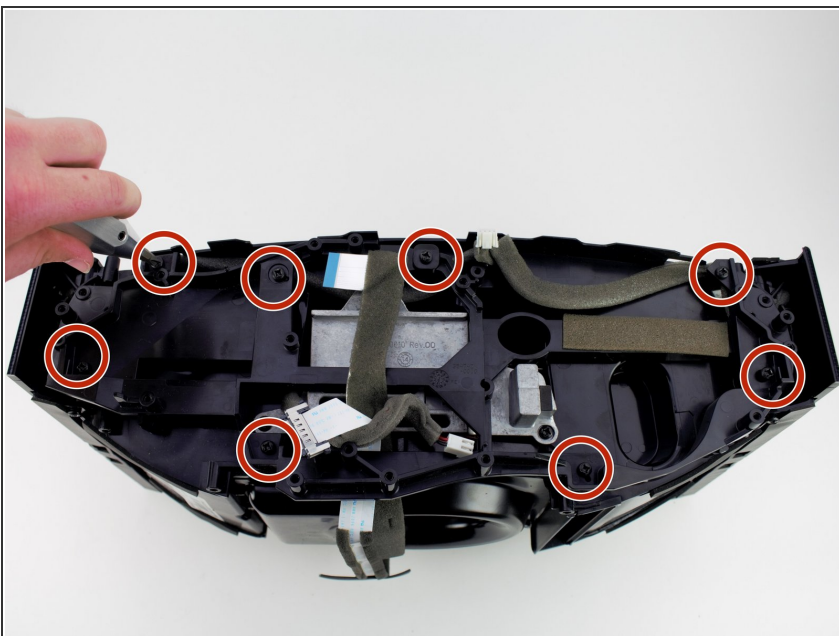
- Disconnect the three cables from the power supply by squeezing the white tabs if present and gently pulling.
- Pick up the power supply and remove the fourth cable from the underside of the power supply.
- Remove the power supply.

Step 6 — Motherboard



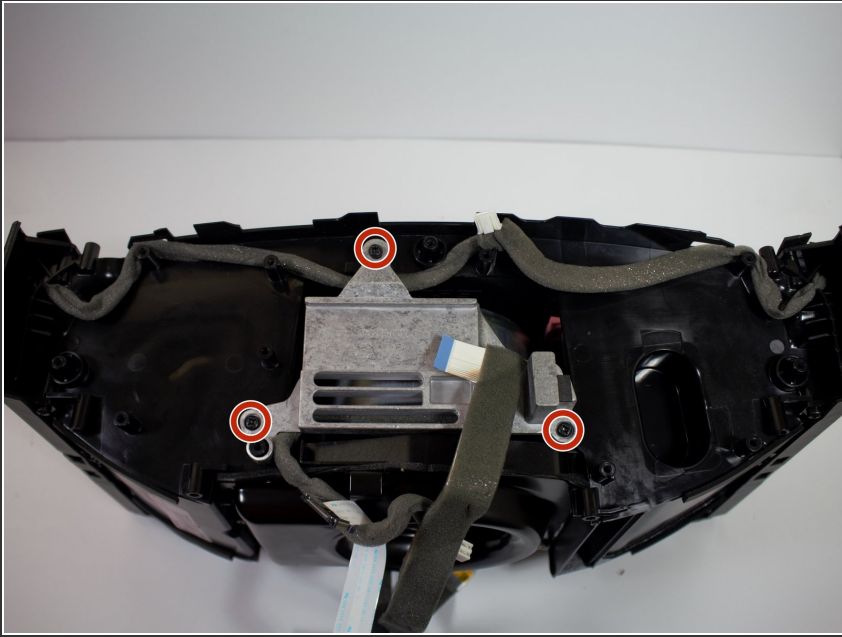
- Remove the five 15.5 mm PH2 screws holding the motherboard down.
 - Remove the three cables from the side of the motherboard by squeezing the grey tabs if present and gently pulling.
 - Remove the motherboard.
- i** The motherboard is identified as the smaller green board with an ethernet, USB Type A, and an auxiliary port.

Step 7 — Subwoofer



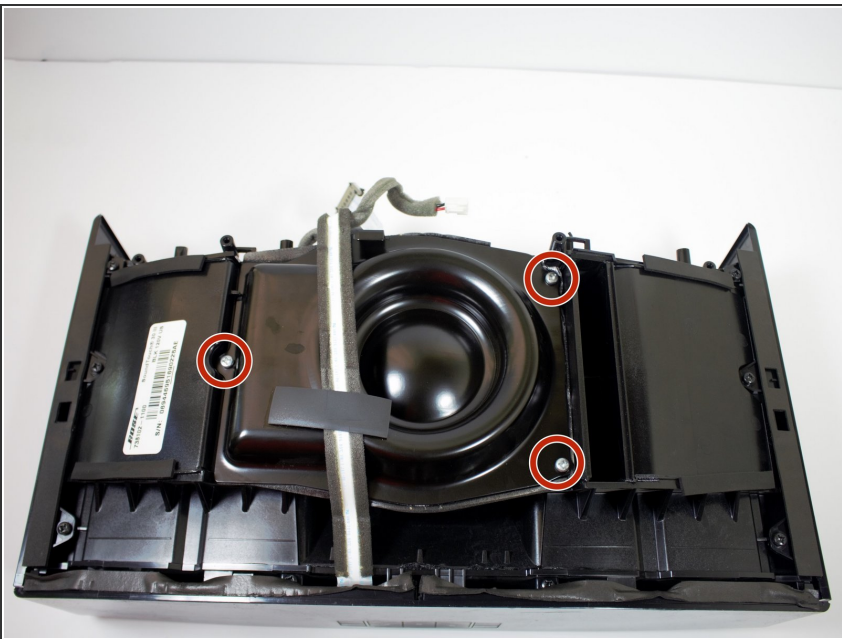
- Remove the eight 15.5 mm PH2 screws holding the plastic insert down.
- Remove the plastic insert.

Step 8



- Remove the three 15.5 mm PH2 screws holding the metal insert down.
- Remove the metal insert.

Step 9



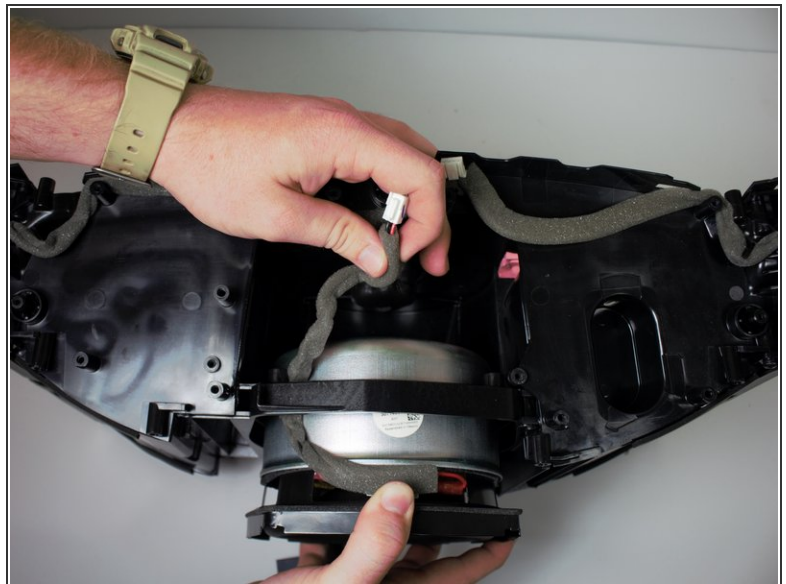
- Remove the three 19 mm PH2 screws holding the metal subwoofer cover down.
- Remove the subwoofer cover.

Step 10



- Remove the four 19 mm PH2 screws holding the subwoofer in place.
- ⚠ Be careful not to let the screwdriver slip and damage the fragile subwoofer.

Step 11



- Remove the subwoofer by pulling towards the back of the device while tucking the wire under the plastic enclosure.

To reassemble your device, follow these instructions in reverse order.

This document was generated on 2019-10-09 05:14:36 PM (MST).

