



BT008 Fitness tracker disassembly

How to disassemble tracker carefully, take a look on what's inside and maintain it back.

Written By: Illia Kukharenko



INTRODUCTION

How to disassamble tracker carefully, take a look on what`s inside and maintain it back.



TOOLS:

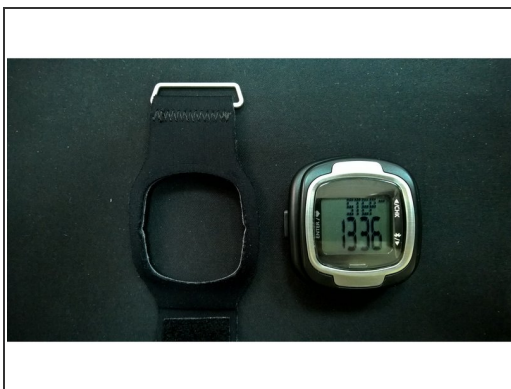
- [Essential Electronics Toolkit](#) (1)
-

Step 1 — View



- The device itself.

Step 2 — Remove strap



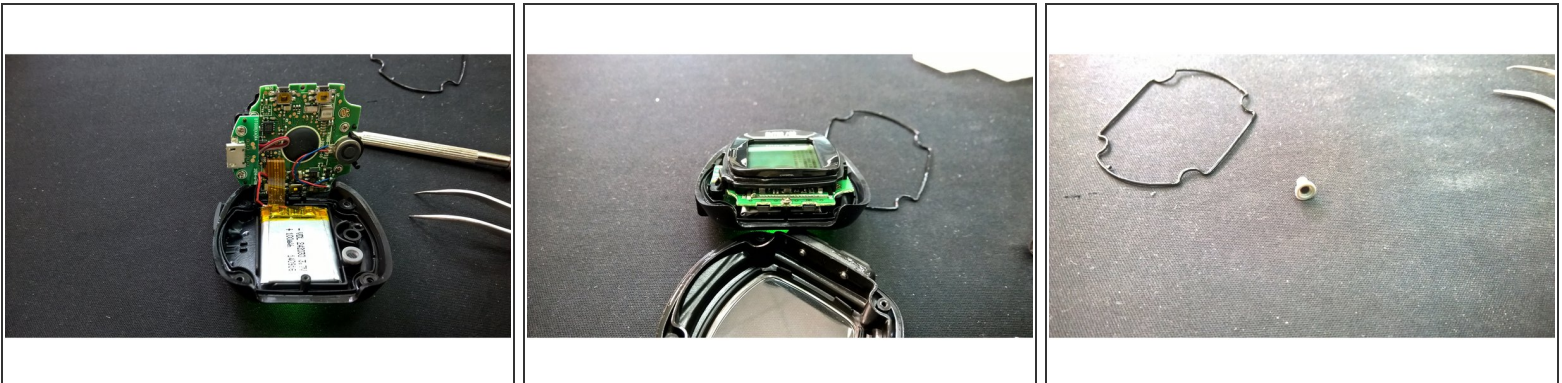
- Removing soft strap.
 - The device is pretty smart. It turns off those green puls measuring LED`s so it`s tricky to take a picture of those glowing.

Step 3 — Removing back cover



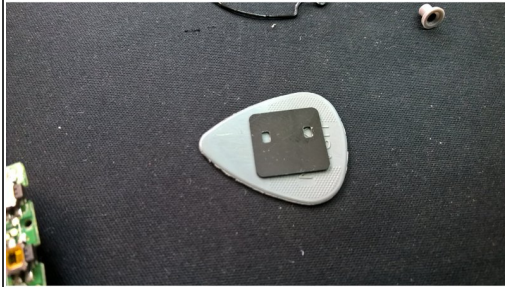
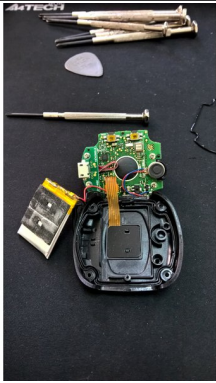
- Remove 4 screws in corners from the back. Remove the cover. Thin silicone washer is visible now. The buttons look waterproof.

Step 4 — Removing the motherboard



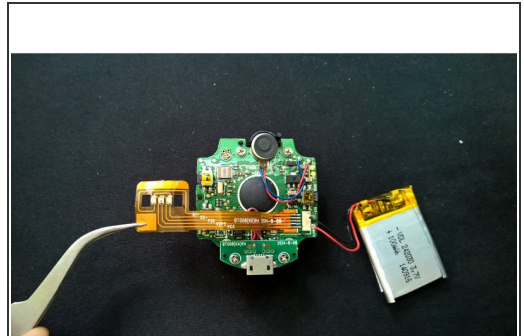
- Remove one more screw. Now 100mAh is visible. Also we can see some modules under the LCD panel. Will get there later.
- SURPRISE! the MCU is barried under a blob of epoxy(
- USB connector has only teo wires out for charging.
- And a reset button. Definitely not waterproof. Same as USB port cap. Why putting so much effort on that buttons and seal if anything else is not protected?!

Step 5 — Going deeper



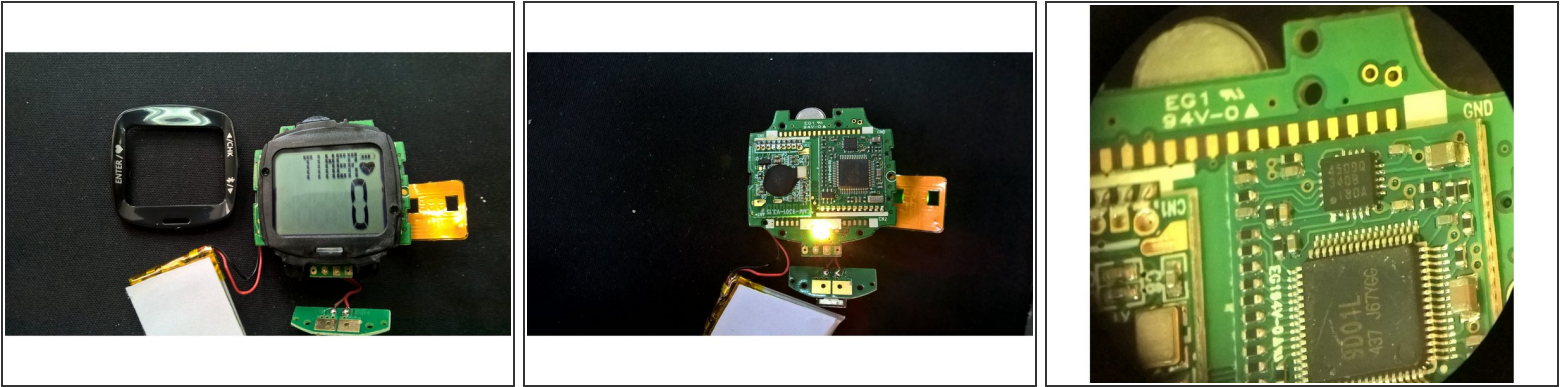
- Double sided tape holds the battery.
- Separate plastic frame for LED`s is holded by two latches which are holded by a plastic flake. Rather complex.

Step 6 — Almost there



- With frame removed. The flexible PCB with LED`s is also mounted on a double sided tape. While removing try to rip this corner with much copper on it.
- Those traces are signed, so cute.
- Vibromotor is glued firmly.

Step 7 — Removing LCD panel



- Plastic frame is held by two pins. Now remove 4 screws holding the panel.
- Two modules under the panels. Bluetooth 4 on the left. Unknown module on the right.
- Scoped photo of the right one.
- LCD panel works fine after reassembling.

To reassemble your device, follow these instructions in reverse order.