



BaByliss i-Pro 45 shaver battery Replacement

Written By: Stanky



Step 1 — Remove the screws of the housing



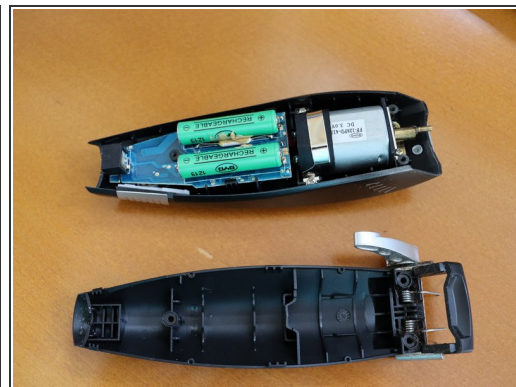
- Remove the rubber plug hiding the screw
- Remove the screw under the plug
- Remove two screws below the blades with a long Philips screwdriver

Step 2 — Remove the blade



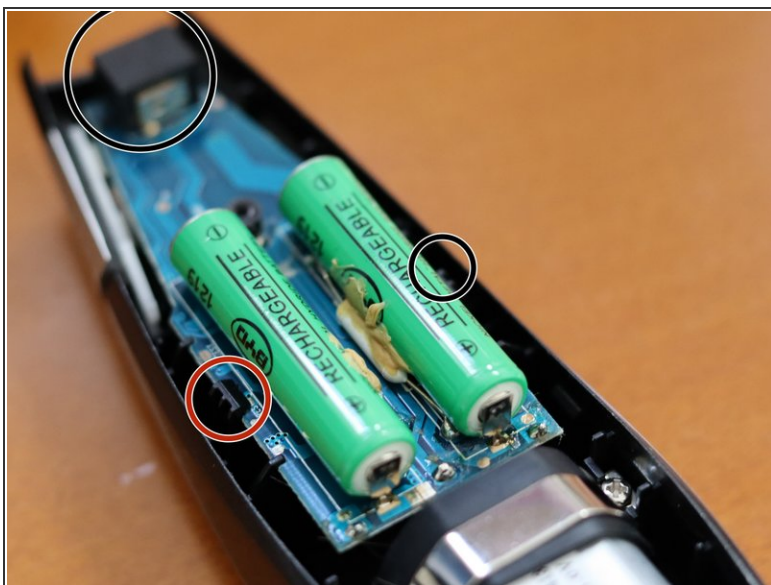
- Remove the screws at the bottom of the blade
- Remove the blade

Step 3 — Open the housing



- Gently open the housing

Step 4 — Lift the circuit



- open the plastic parts holding the circuit in place
- start lifting from the tail

To reassemble your device, follow these instructions in reverse order.