



BaByliss-Expert Plus 2000 Hairdryer Thermal Fuse Replacement

we will show how to disassemble this type of hairdryer and replace the thermal fuse

Written By: Tiago





TOOLS:

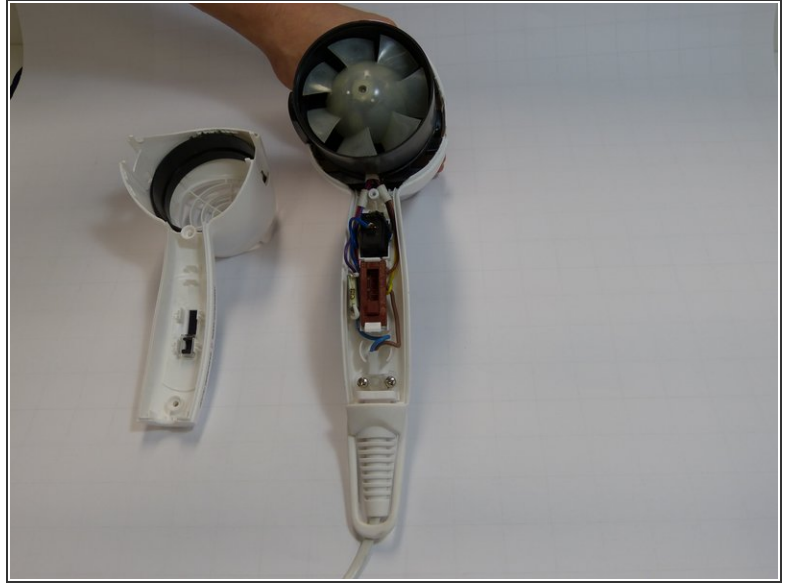
- [Spanner 4.0 screwdriver](#) (1)
- [iFixit Opening Tools](#) (1)
- [Phillips #2 Screwdriver](#) (1)

Step 1 — Thermal Fuse



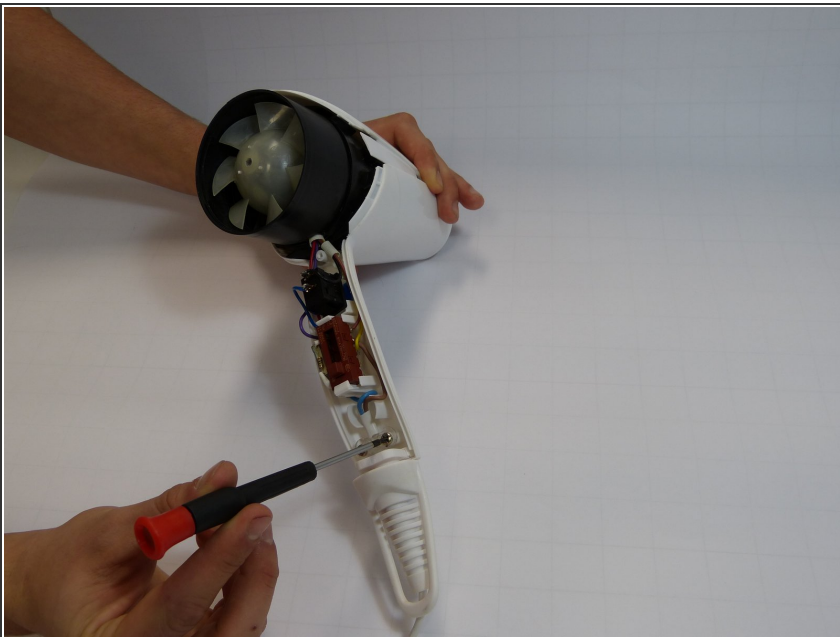
- ⚠ Before disassembly, unplug the device.
- ⚠ Make sure the device was not on for the last 10 minutes, because it might still be hot.
- Unscrew the two screws on the handle with the spanner screwdriver.

Step 2



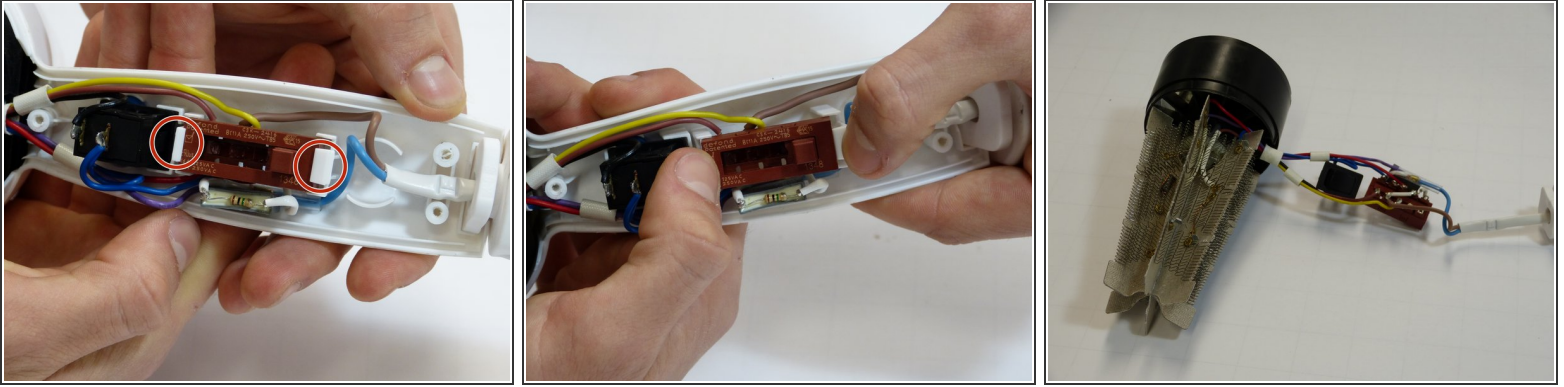
- Pull the case in opposite directions.
- ⓘ You might need a prying tool if the black components don't come out easily.

Step 3



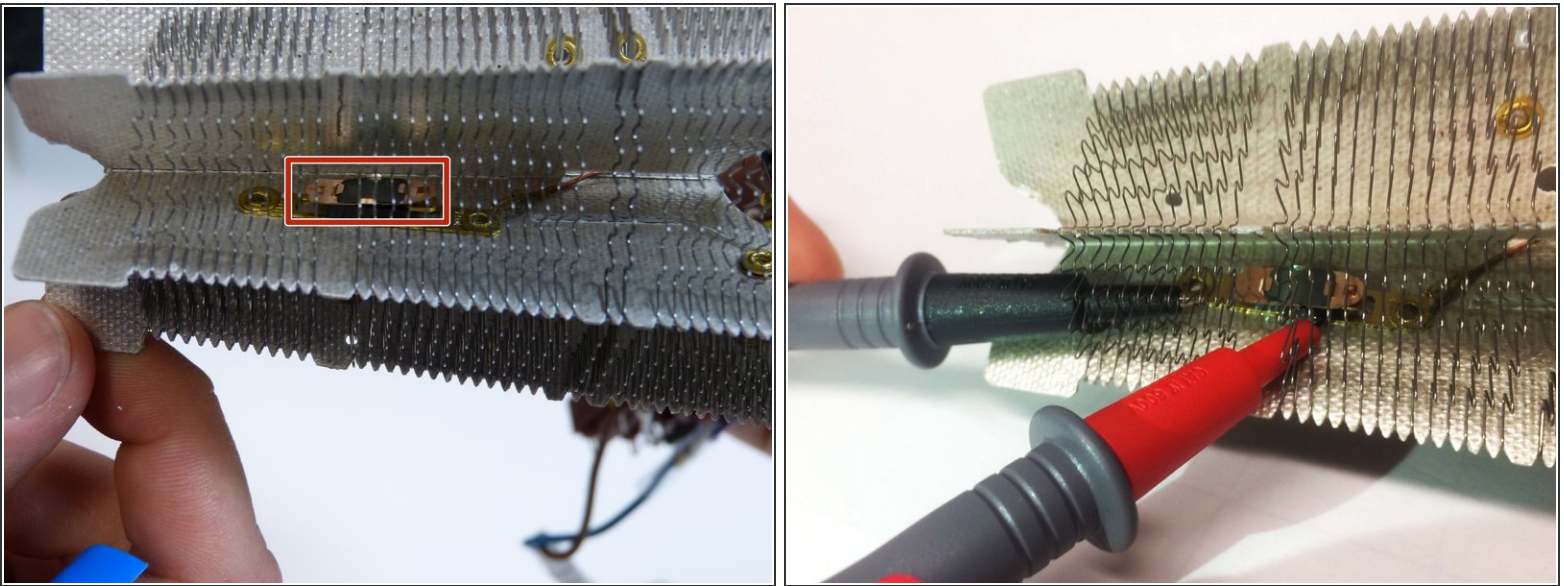
- Unscrew the remaining two screws inside the handle with the Phillips screwdriver.

Step 4



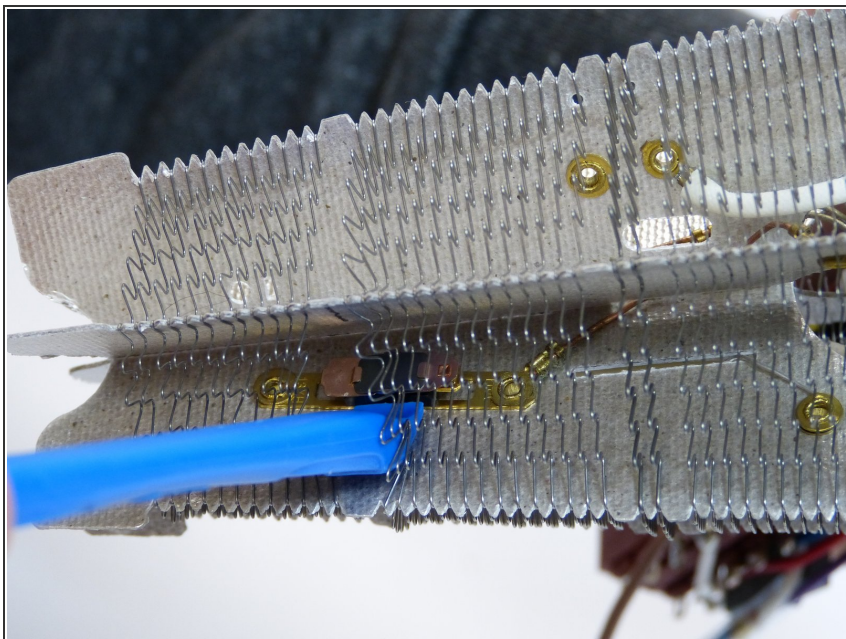
- Push the inner components out of the handle.

Step 5



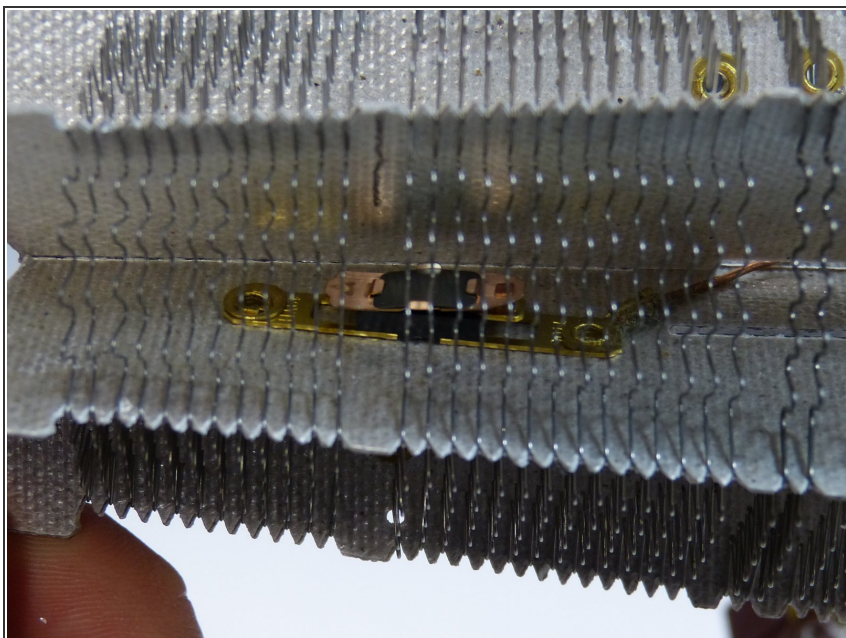
- Locate the thermal fuse.
- Test the thermal fuse for continuity using the multimeter.
- ⓘ Make sure the multimeter is set to 200 ACV and bring the probes toward thermal fuse.
- The circuit is closed and properly functioning if the multimeter displays varying numbers.
- The circuit is open if the multimeter displays non-varying numbers or no numbers at all.

Step 6



- To replace the thermal fuse, use the prying tool to extract the object.
- ⓘ To remove it, wedge it back and forth until it comes free.
- ⓘ You don't need to take out the gold piece under the thermal fuse.

Step 7



- Replace the old thermal fuse by a new one.

To reassemble your device, follow these instructions in reverse order.