



Baby Einstein Take Along Tunes Battery Socket Replacement

The metal part that the batteries connect to is faulty and the guide shows steps to replace it

Written By: Shreya Sunny



INTRODUCTION

In this guide, you will learn how to replace the battery terminals



TOOLS:

- [Phillips #1 Screwdriver](#) (1)
- [Metal Spudger](#) (1)
- [Precision Tweezers Set](#) (1)
- [iFixit Opening Tools](#) (1)



PARTS:

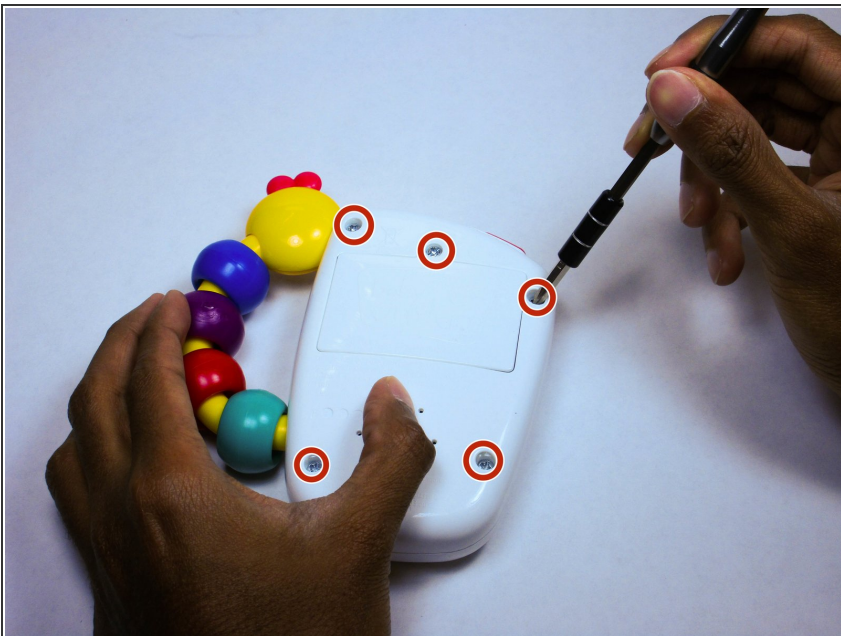
- [Battery Terminal](#) (1)

Step 1 — Battery Socket



- Set the device on it's face with the back facing up.

Step 2



- Begin by removing all highlighted screws with a using a Phillips #1 Screwdriver.

Step 3



- Remove the battery plate with a plastic opening tool and set it aside.

Step 4



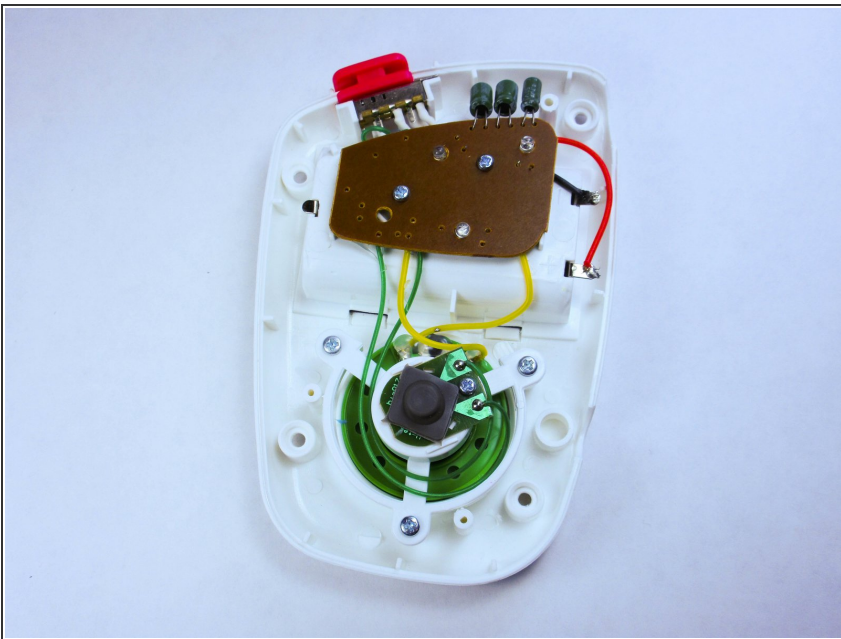
- Remove each battery with a plastic opening tool and set them aside.

Step 5



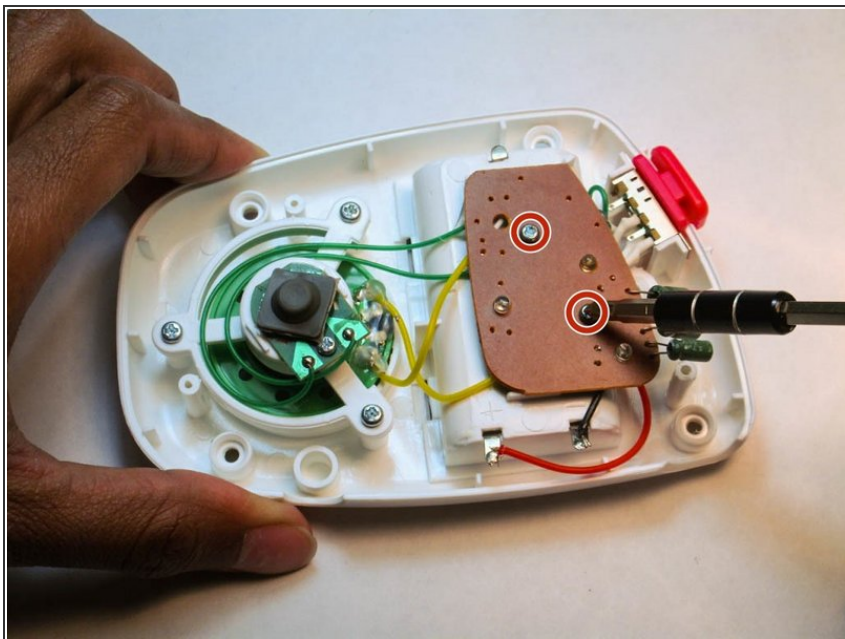
- Separate the device in two parts by using the plastic opening tool.

Step 6



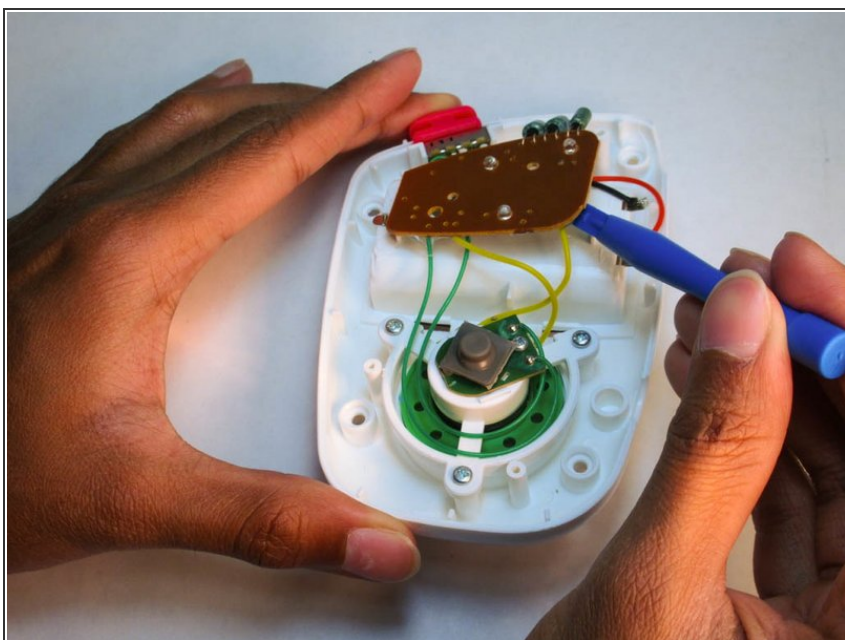
- Remove the top piece and place it aside, keeping the bottom half with the mechanics.

Step 7



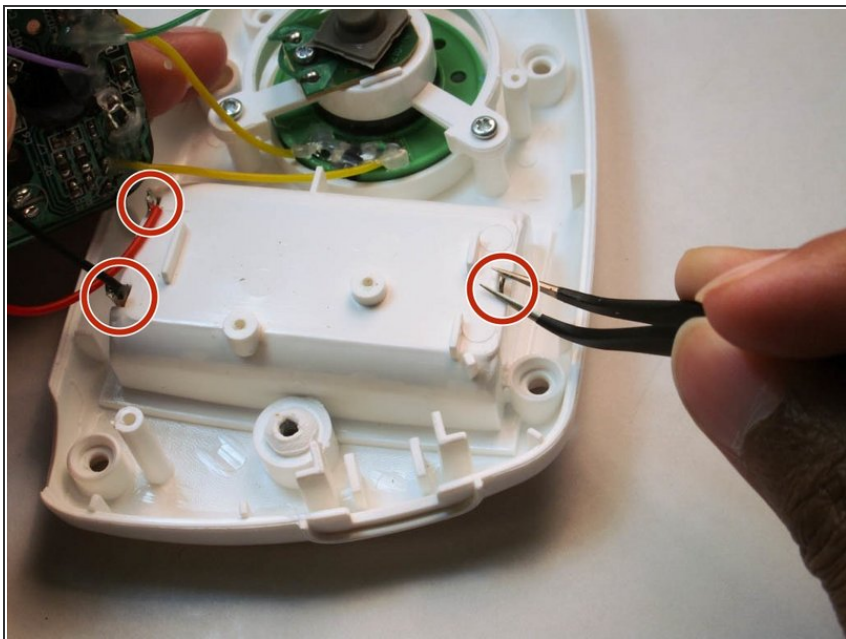
- Remove the highlighted screws using a Phillips #1 Screwdriver.

Step 8



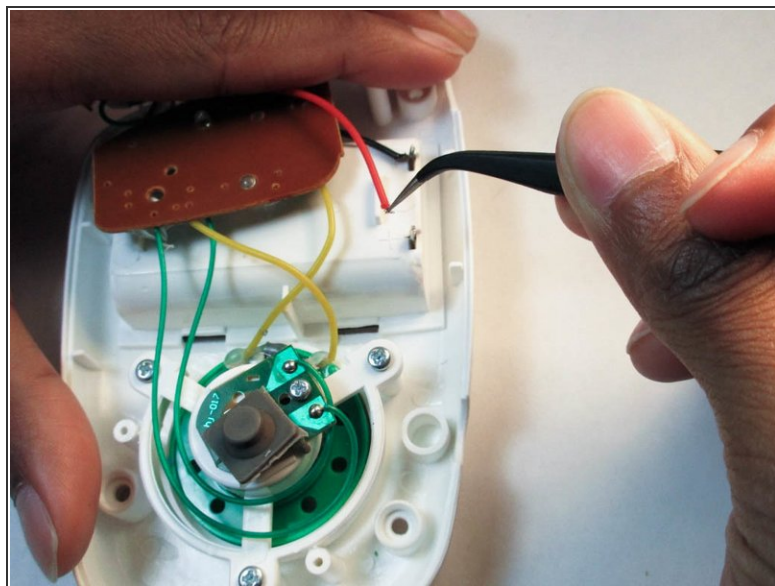
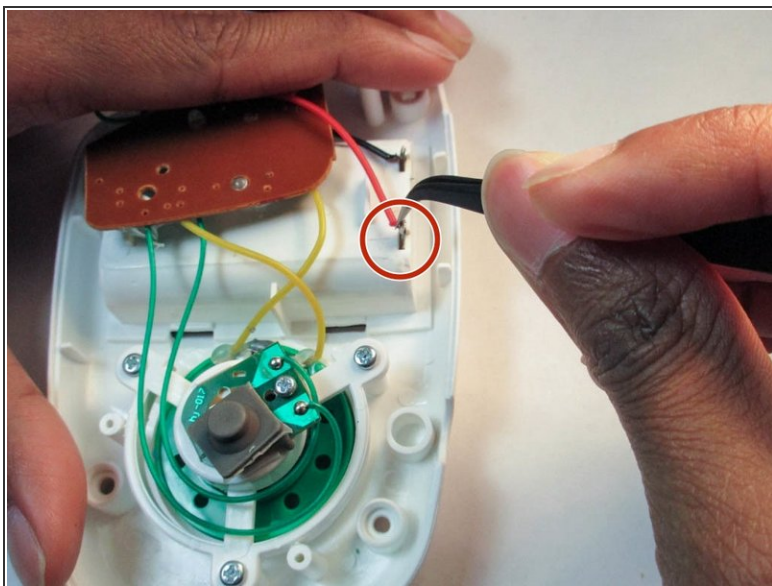
- Use the plastic opening tool and carefully set the LED panel to the side, exposing the wires underneath.

Step 9



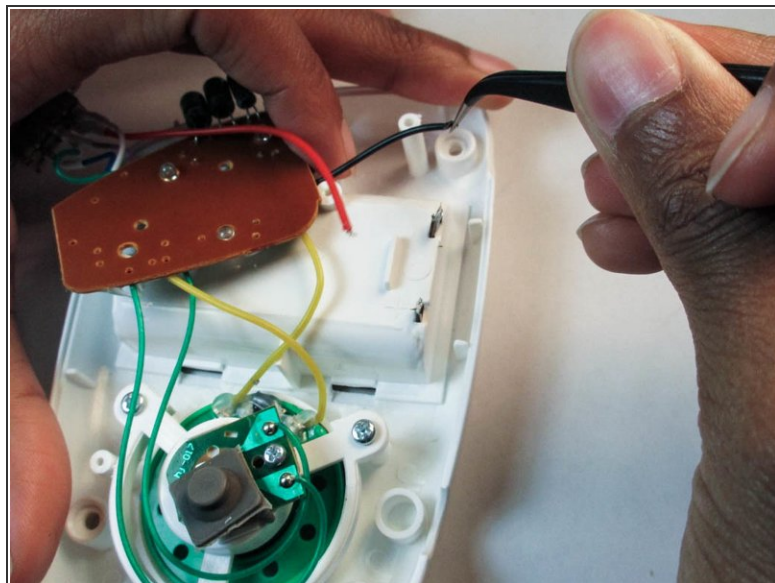
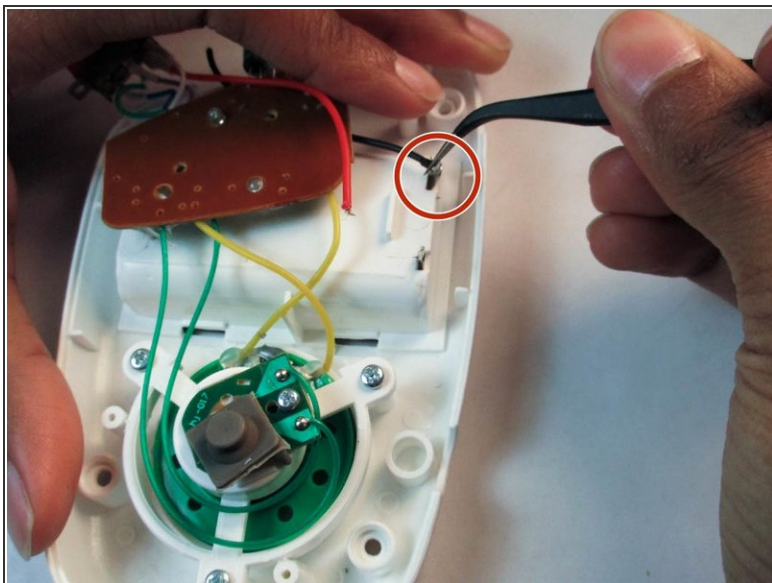
- With the precision tweezers, straighten the metal connectors to remove the terminals from the other side.

Step 10



- Sever the red wire from the metal connector with the precision tweezers.

Step 11



- Sever the black wire from the metal connector with the precision tweezers.

Step 12



- Flip the device on its face and remove the battery terminals with a metal spudger.

To reassemble your device, follow these instructions in reverse order.