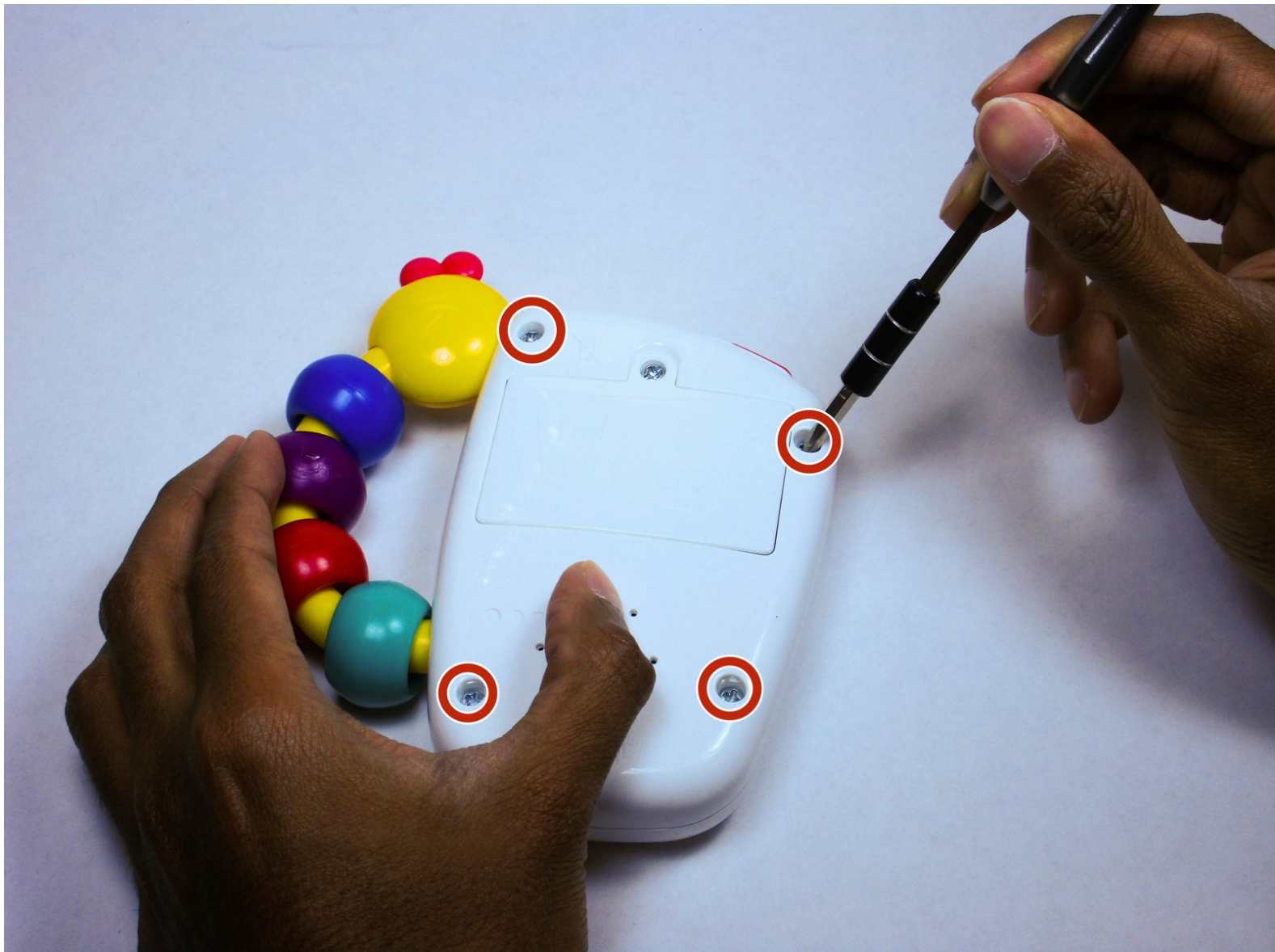




# Baby Einstein Take Along Tunes Power/ Volume Switch Replacement

The power/ volume switch gets stuck or does not work properly then replace the switch

Written By: Shreya Sunny



# INTRODUCTION

To remove and replace the power/ volume switch



## TOOLS:

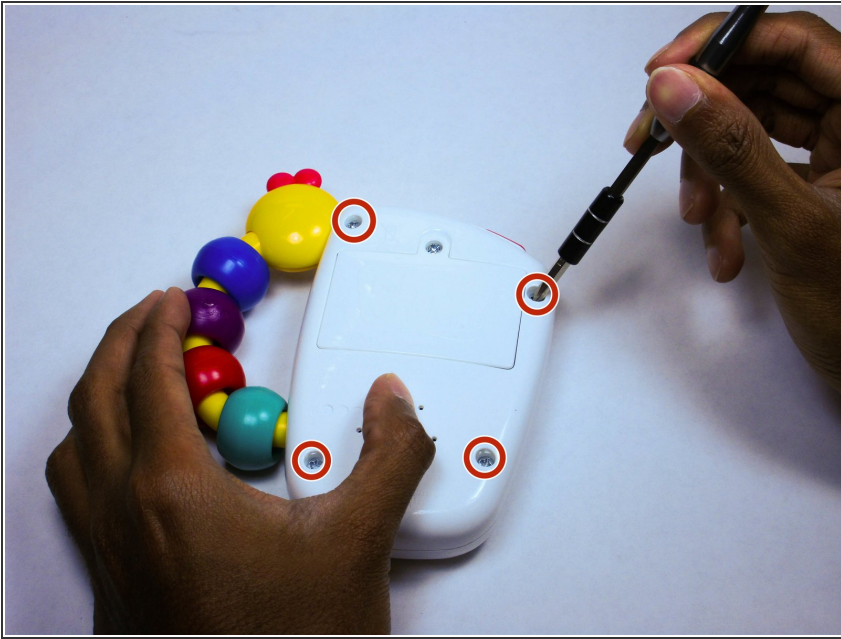
- [Phillips #1 Screwdriver](#) (1)
- [iFixit Opening Tools](#) (1)



## PARTS:

- [Power Switch](#) (1)

## Step 1 — Power/ Volume Switch



- Using a screwdriver loosen the four screws connecting the body of the device together.

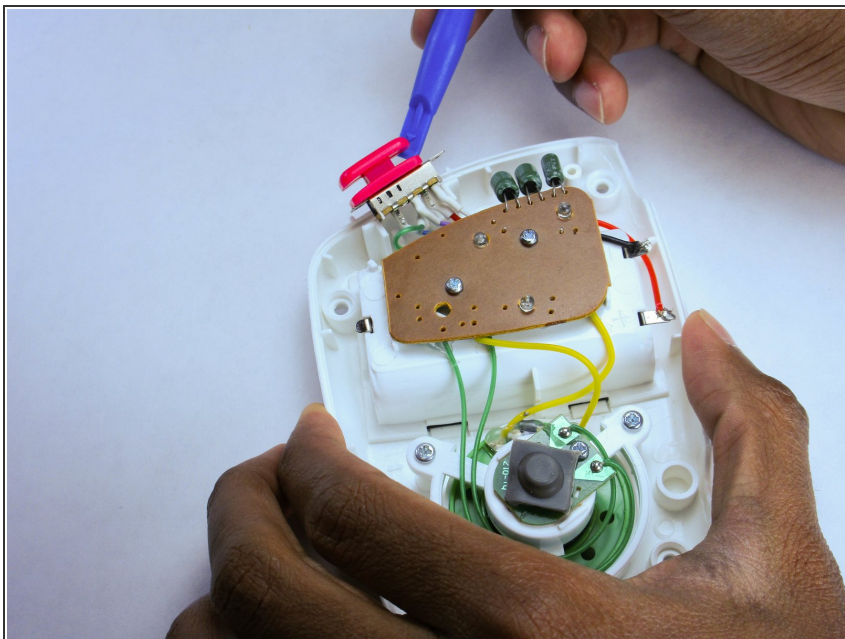
## Step 2



- Once unscrewed, pop the back of the device off using the plastic opening tool.

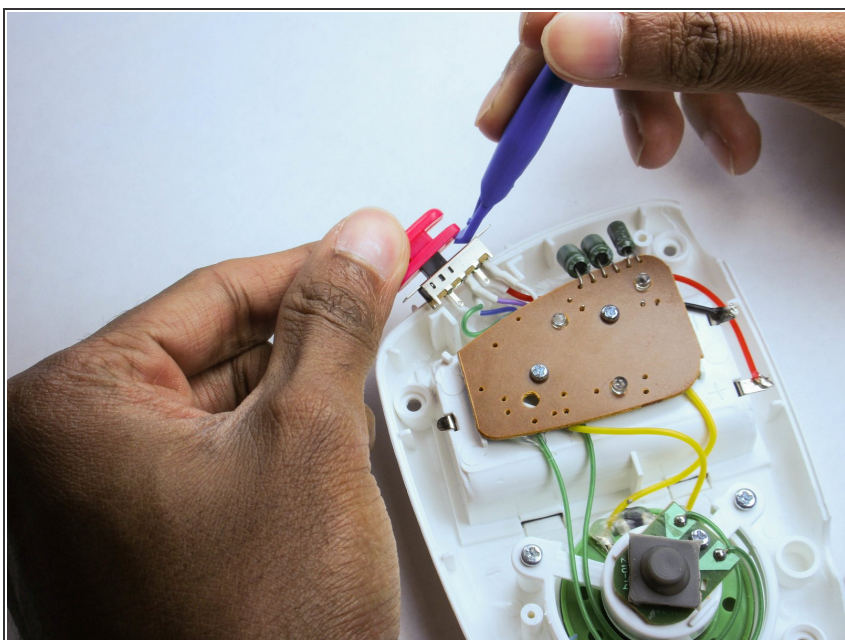


### Step 3



- Use the plastic opening tool to remove the power button from the device.

### Step 4



- Remove the power button from the connector and replace it.

To reassemble your device, follow these instructions in reverse order.