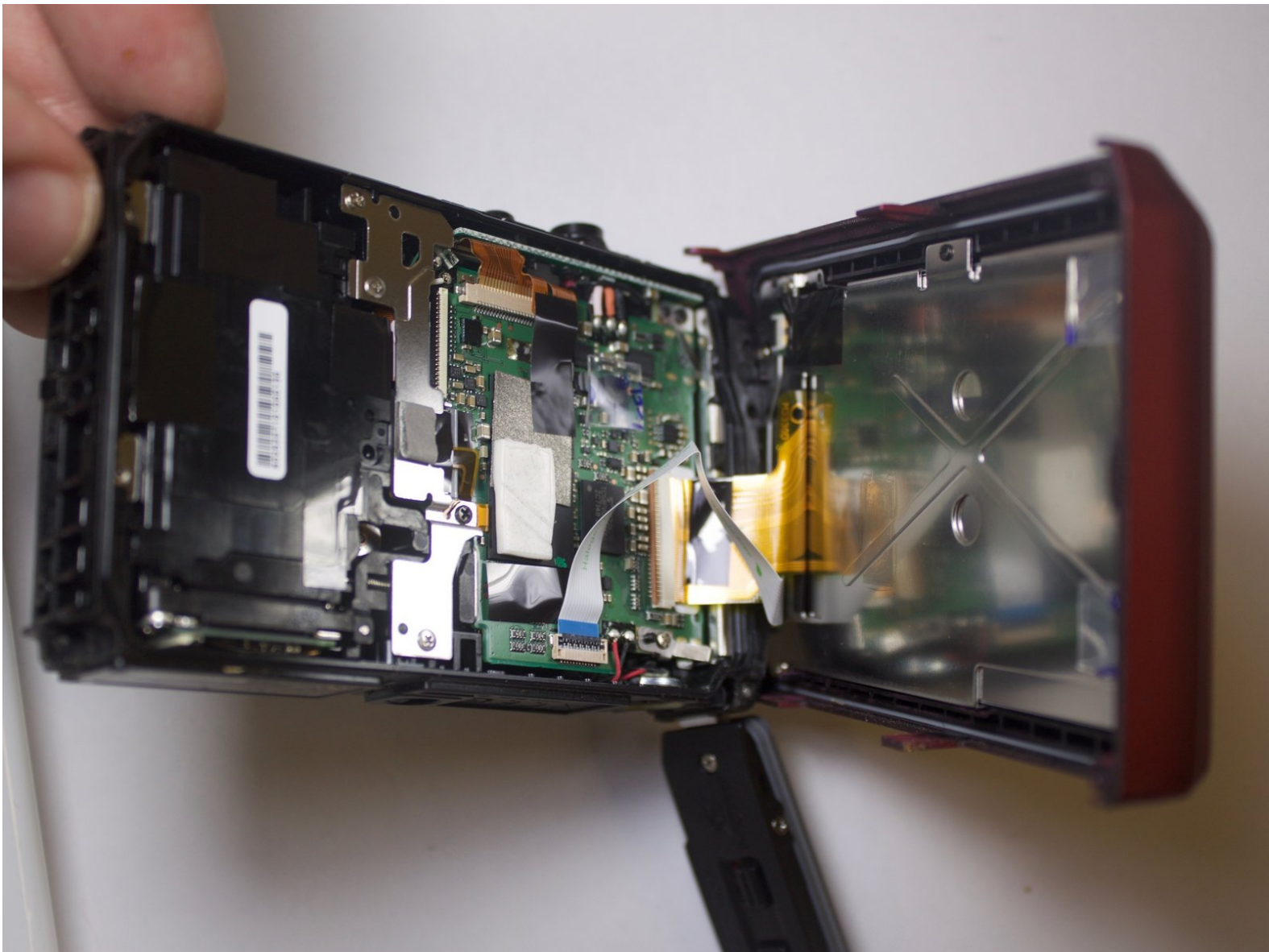




Back Case

This guide will provide step-by-step instructions on how to remove the back case of the Olympus TG-820 iHS camera.

Written By: Larissa Knight



INTRODUCTION

Are you trying to figure out what is wrong with your camera? This is a good place to start as it allows you to access everything in the camera that could possibly be wrong.



TOOLS:

- [Phillips #00 Screwdriver](#) (1)
 - [Phillips H1.5 Screwdriver](#) (1)
-


Step 1 — Battery



- Orient camera to look directly at battery compartment side as shown.

Step 2



- Locate the two latches on the battery compartment.
 - First, move the "lock" switch left to reveal red indicator.
 - Next, move the "cover latch" switch downward to reveal red indicator.
-  You have to move the switches in that order for the compartment to unlatch.

Step 3



- Allow the battery compartment latch to completely open.
- Insert battery with the writing face up.
- ⓘ The bigger slot is for the battery. The smaller slot is for the memory card.
- ⓘ Battery not shown.

Step 4 — Back Case



- Orient the camera so you are looking at the bottom.
- Remove the three 3.85mm Phillips #00 screws from the bottom of the camera.

Step 5



- Orient the camera so you are looking at the side plate.
- Remove the two 3.15mm Phillips #00 screws from the side plate of the camera.

Step 6



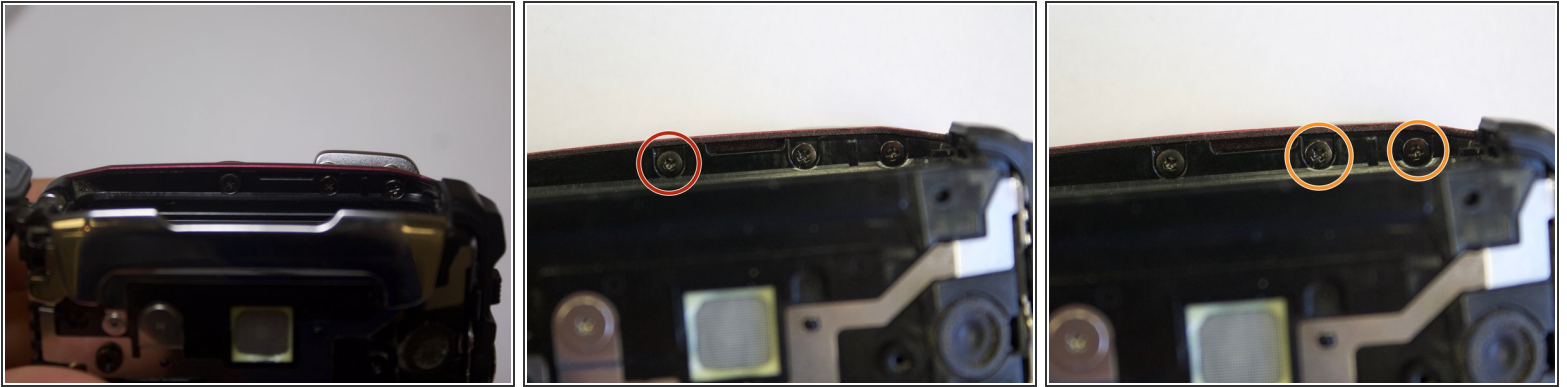
- Orient the camera so you are looking at the front plate.
- Remove the two 3.8mm with the Phillips H1.5 from the front plate.
- Remove the "Olympus" plate.

Step 7



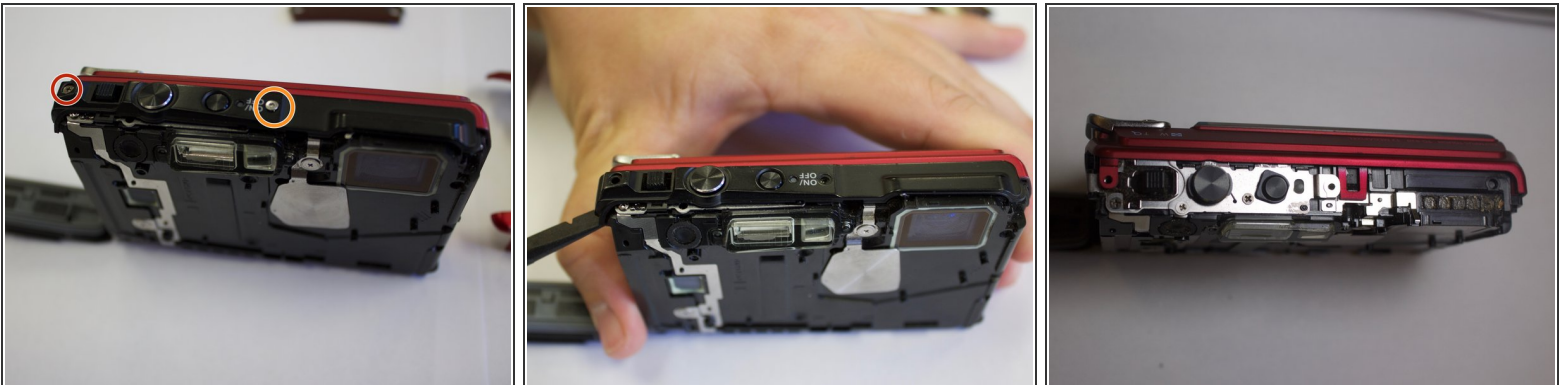
- Remove face plate.

Step 8



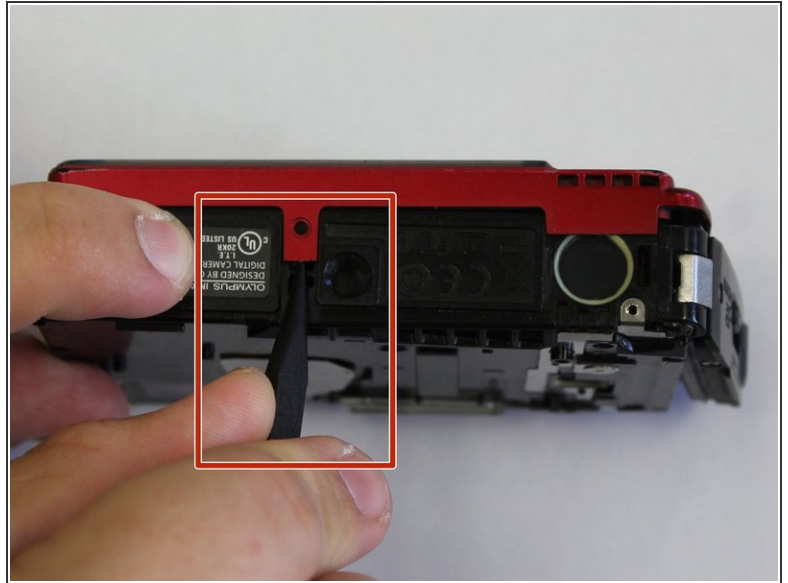
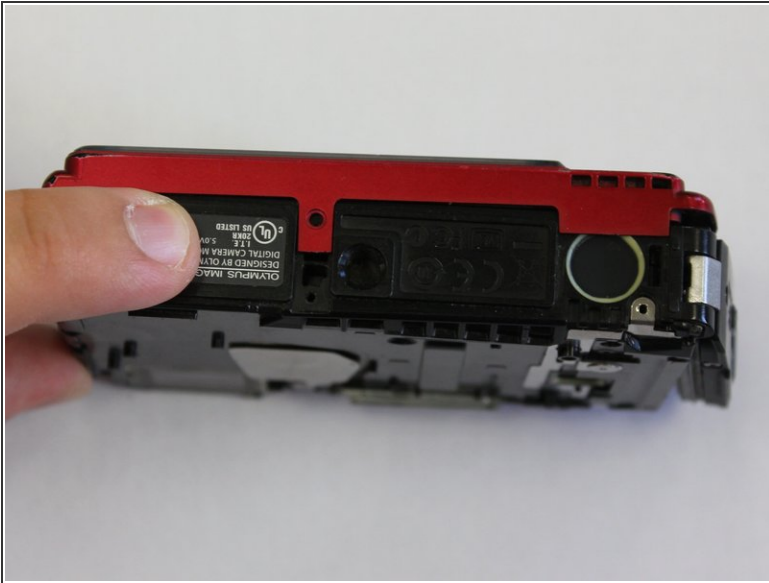
- Locate three small black screws inside of the battery compartment.
- Remove the 3.85mm Phillips #00 screw on the far left side.
- Remove the two 5mm Phillips #00 screws on the right side

Step 9



- Orient the camera to be look at the top.
- Remove the 5.4mm Phillips #00 screw on the top left side.
- Remove the 7.4mm Phillips #00 screw next to the "ON/OFF" label.
- Pry off top button plate with black nylon spudger.

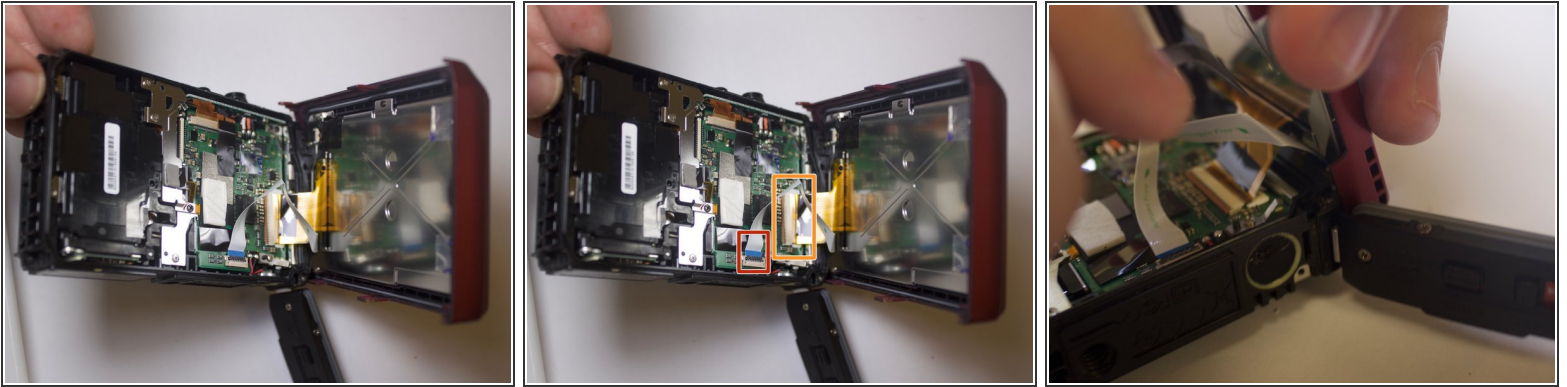
Step 10



- Rotate to bottom of camera and locate bottom latch.
- Wedge black nylon spudger in between bottom latch and camera base to release LCD Screen from camera.
- Push firmly apart.

⚠ Some buttons might fall out.

Step 11



- Orient the camera to the LCD screen side that is now wedged open.
- Locate the white ribbon cable and pull out from motherboard.
- Locate the brown ribbon cable and pull out from motherboard.

To reassemble your device, follow these instructions in reverse order.