



Back Panel Disassembly

In this prerequisite, we will demonstrate how to take off the back of the device to access the inner components.

Written By: Jordan Rosemeyer



INTRODUCTION

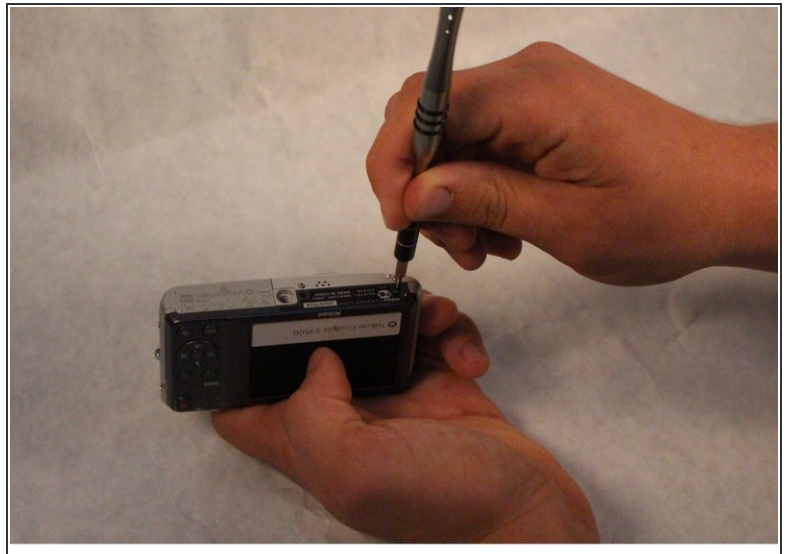
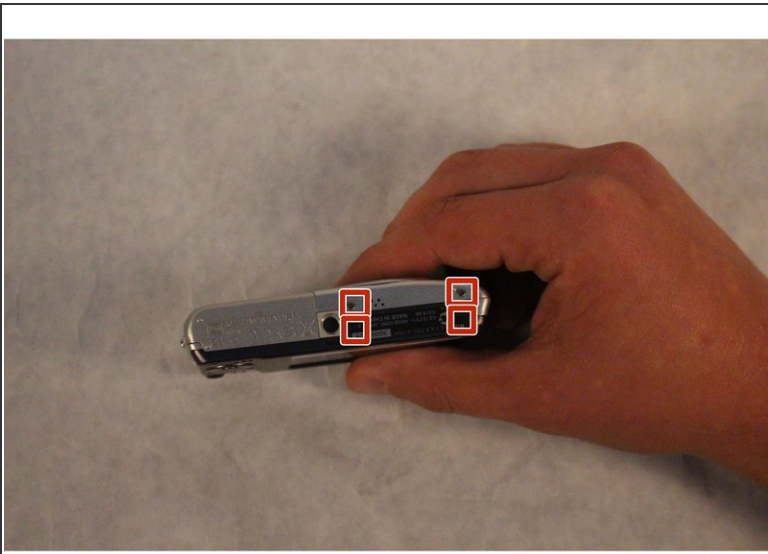
Prerequisite for removing the back panel of a Nikon Coolpix S3500.



TOOLS:

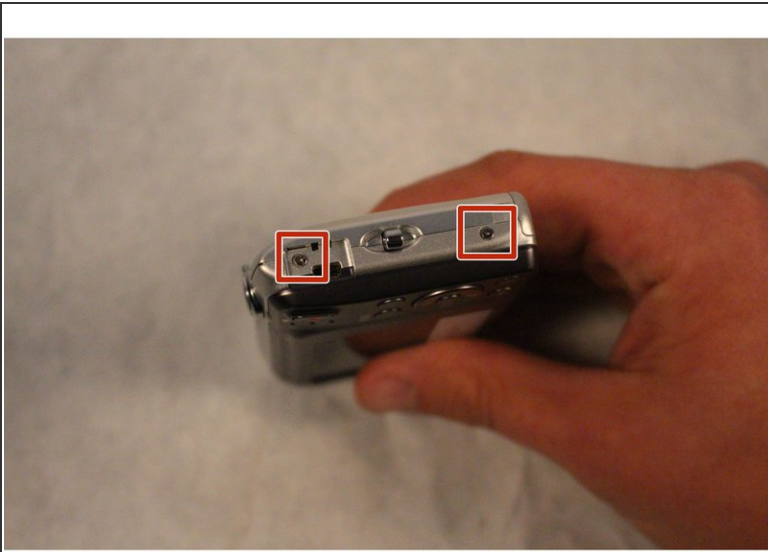
- [iFixit Opening Tools](#) (1)
 - [Phillips #000 Screwdriver](#) (1)
-

Step 1 — Back Panel Disassembly



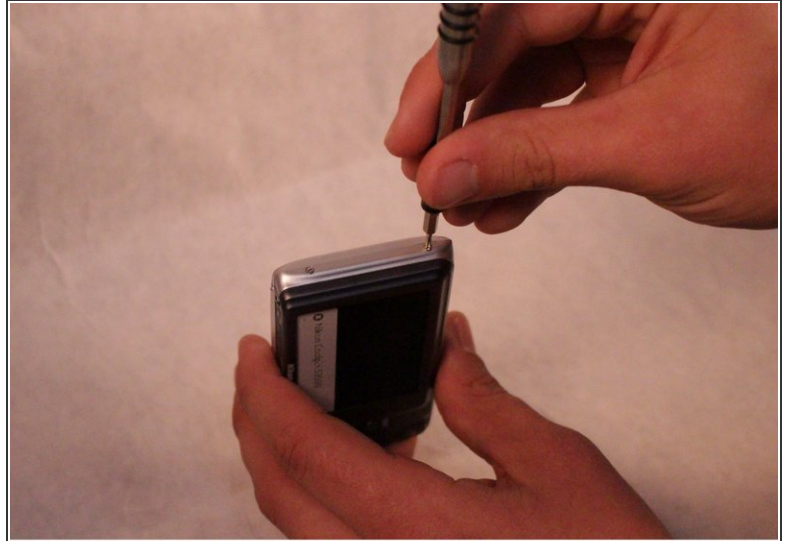
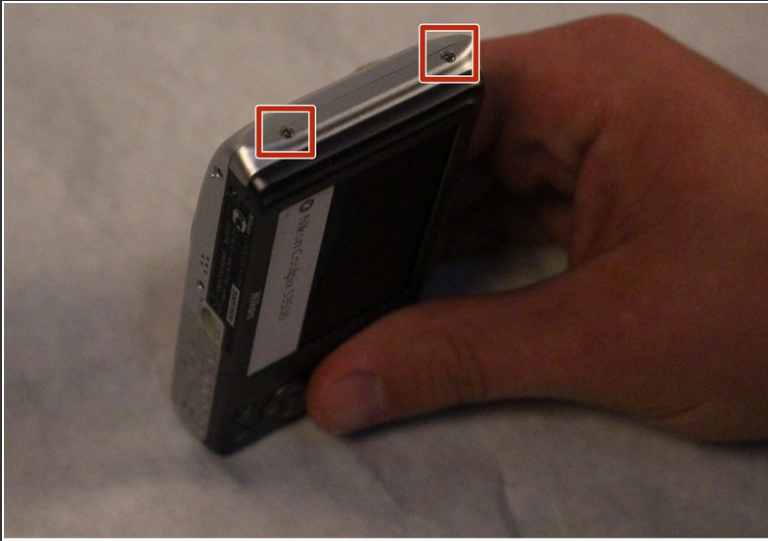
- With the battery door facing upward, take your PH000 screwdriver and remove the 4 mm screws from the bottom of the device.

Step 2



- After removing the screws, rotate the device to where the micro USB port is facing up.
- Now, take your PH000 screwdriver and remove the two 4 mm screws from the device.

Step 3



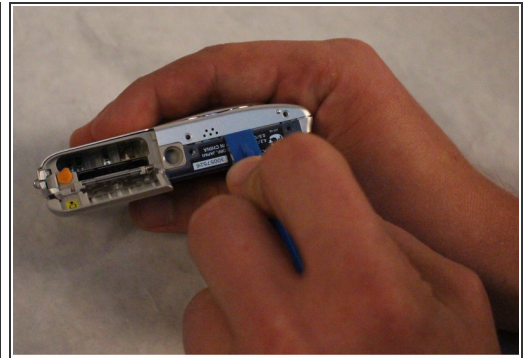
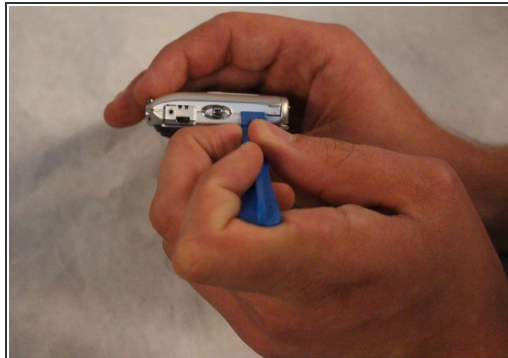
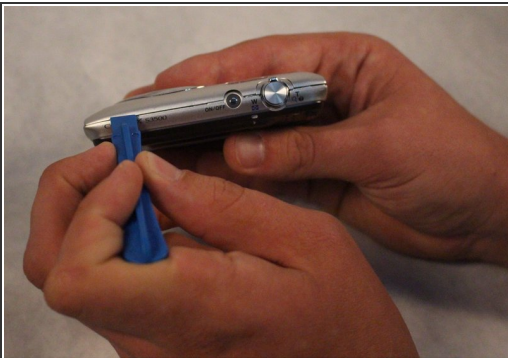
- Rotate the device 180 degrees so that the opposite side of the device is now facing upwards.
- Now, take your PH000 screwdriver and remove the two 4 mm screws from the device.

Step 4



- After all of the screws are removed, rotate the device so that the bottom of the device is now facing upward.
- With your index finger, press down and slide open the memory card/battery door.

Step 5



- Now take the plastic opening tool, and place it in the seam of the device.
- Now, work the tool around the seam of the device until you can safely pry open the device.

Step 6



- ⚠ Be careful when removing the back piece of your device.
- Using your free hand, finish prying off the back piece of the device.

To reassemble your device, follow these instructions in reverse order.