



Back Panel Replacement

Replacement guide for the back panel of the G3 controller

Written By: David Mistretta



INTRODUCTION

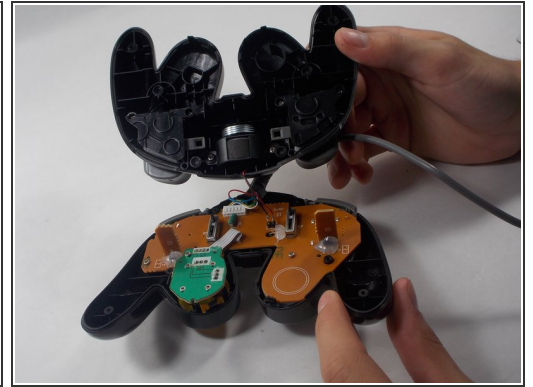
A guide for replacing the back panel on the G3 Gamecube Controller by gamestop.



TOOLS:

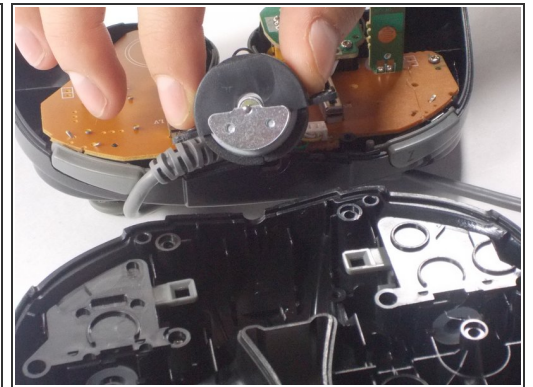
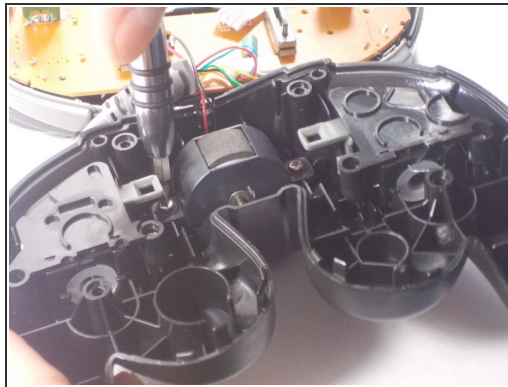
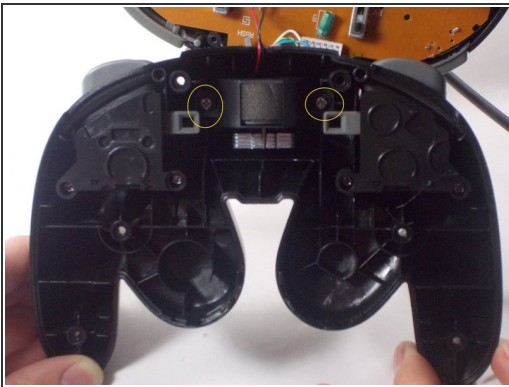
- [Mako Driver Kit - 64 Precision Bits](#) (1)
-

Step 1 — Back Panel



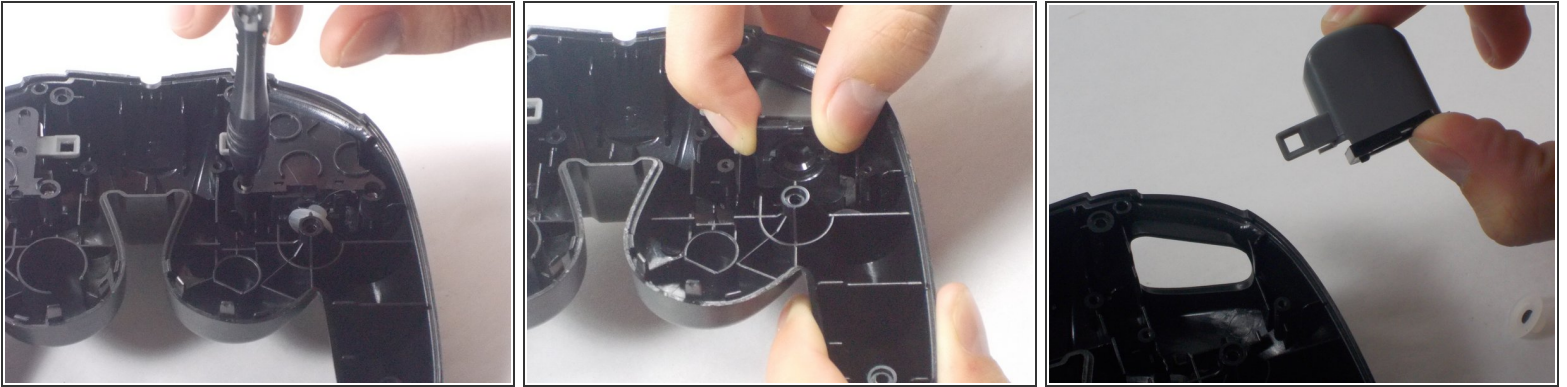
- First, remove the 6 screws in the back panel and pull the back panel off.

Step 2



- Next, remove the rumble motor by unscrewing the 2 screws connecting it.

Step 3



- Finally remove the screws holding in the right and left triggers. It's easiest to hold the trigger together as shown in the third picture. Remove both the left and right trigger, and then you have successfully removed your back panel.

To reassemble your device, follow these instructions in reverse order.