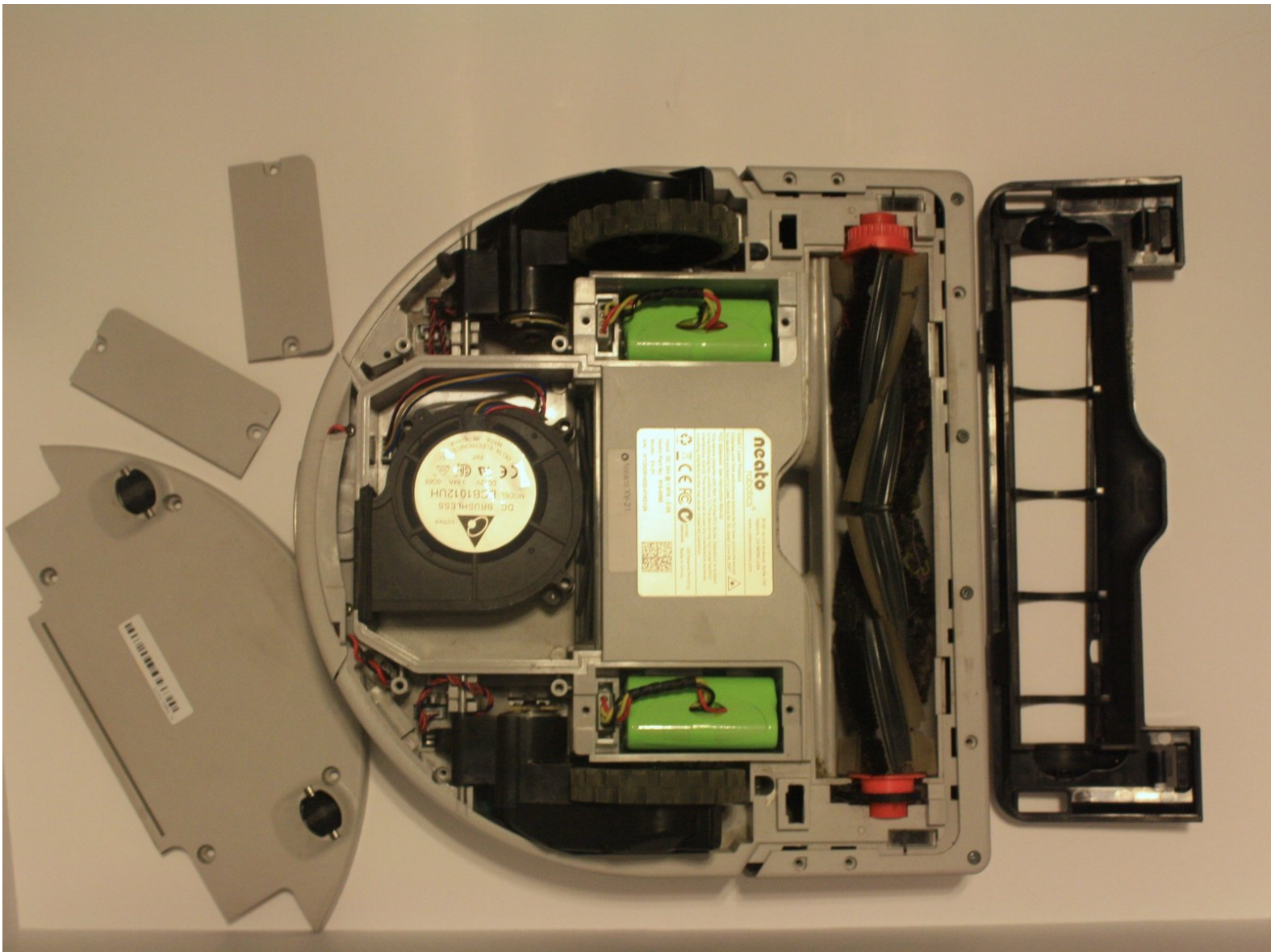




Back Panels

This guide is the main prerequisite for all the replacement guides related to the Neato XV-21

Written By: Nastassja Klipsch



INTRODUCTION

This guide will show how to expose all of the inner parts of the Neato robot so that the user can continue with the replacement guides.



TOOLS:

- [Phillips #0 Screwdriver](#) (1)
-

Step 1 — Back Panels of Neato XV-21



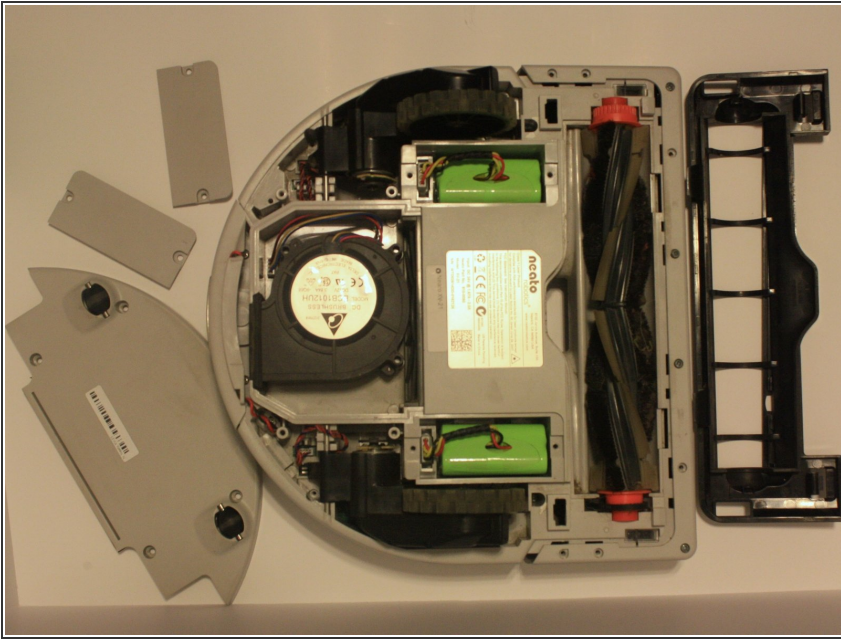
- Flip the Neato on its back so the bottom is exposed
- Unscrew the seven screws.

Step 2



- Lift the panels to reveal the batteries, brush and fan
- ⓘ There should be little to no resistance during this step, do not continue if the pieces do not separate easily

Step 3



- The Neato's core components are now exposed and ready to be cleaned and/or replaced.

To reassemble your device, follow these instructions in reverse order.