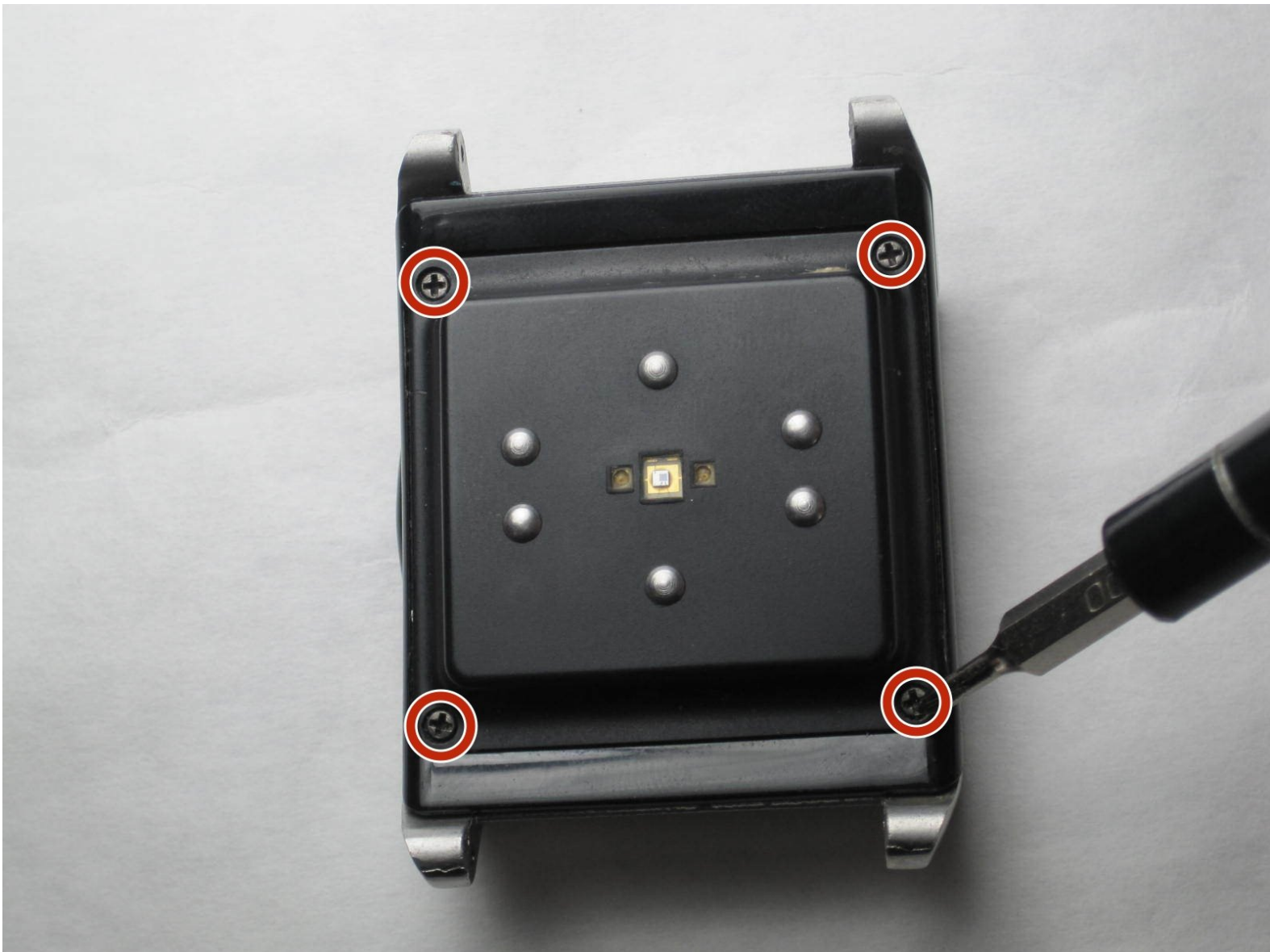




Basis B1 Band Back Plate Replacement

This guide shows how to replace the back plate on the Basis B1 Band.

Written By: Kaitlyn Lee



INTRODUCTION

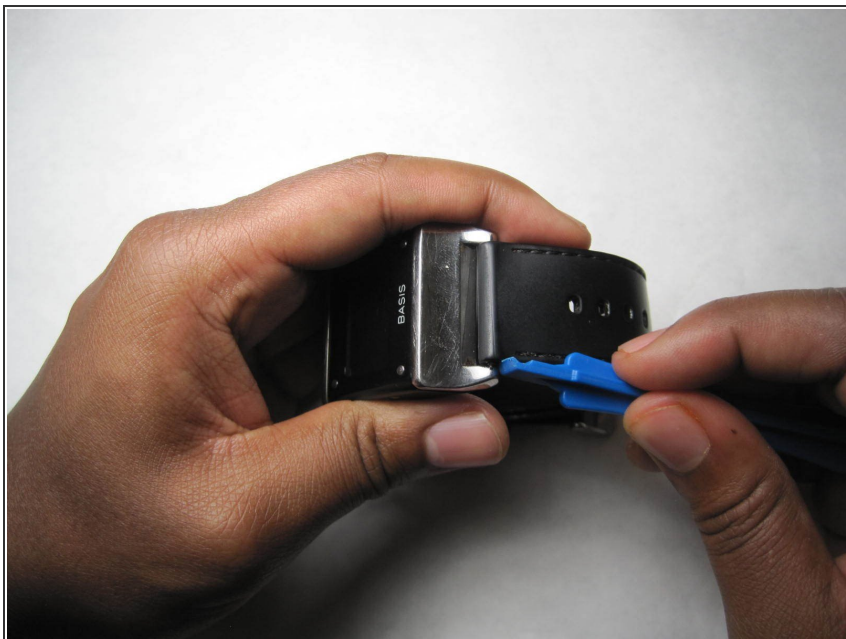
The back plate of this watch can be replaced if it becomes scratched or is broken. It is able to be replaced very easily. The process includes using a screwdriver to remove the four screws on the back plate. Then a new back plate can be added in place of the old one.



TOOLS:

- [iFixit Opening Tools](#) (1)
 - [Phillips #000 Screwdriver](#) (1)
 - [Tweezers](#) (1)
-

Step 1 — Watch Strap



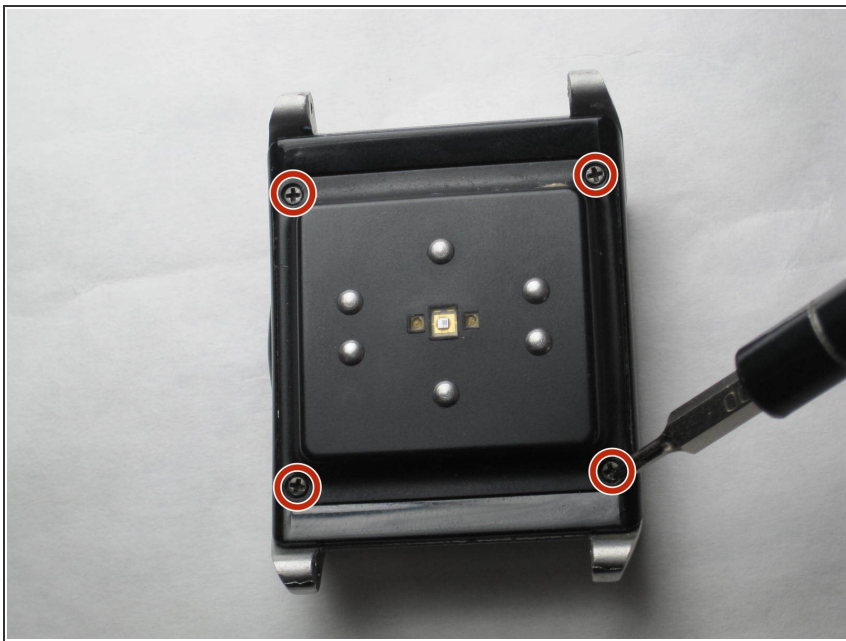
- Wedge a plastic opening tool between band contacts.

Step 2



- Push in plastic opening tool until the components click and pop out of the holder.
- Repeat steps for other band.

Step 3 — Back Plate



- Remove four 4mm screws using a PH000 screwdriver.
- Remove back plate.

To reassemble your device, follow these instructions in reverse order.