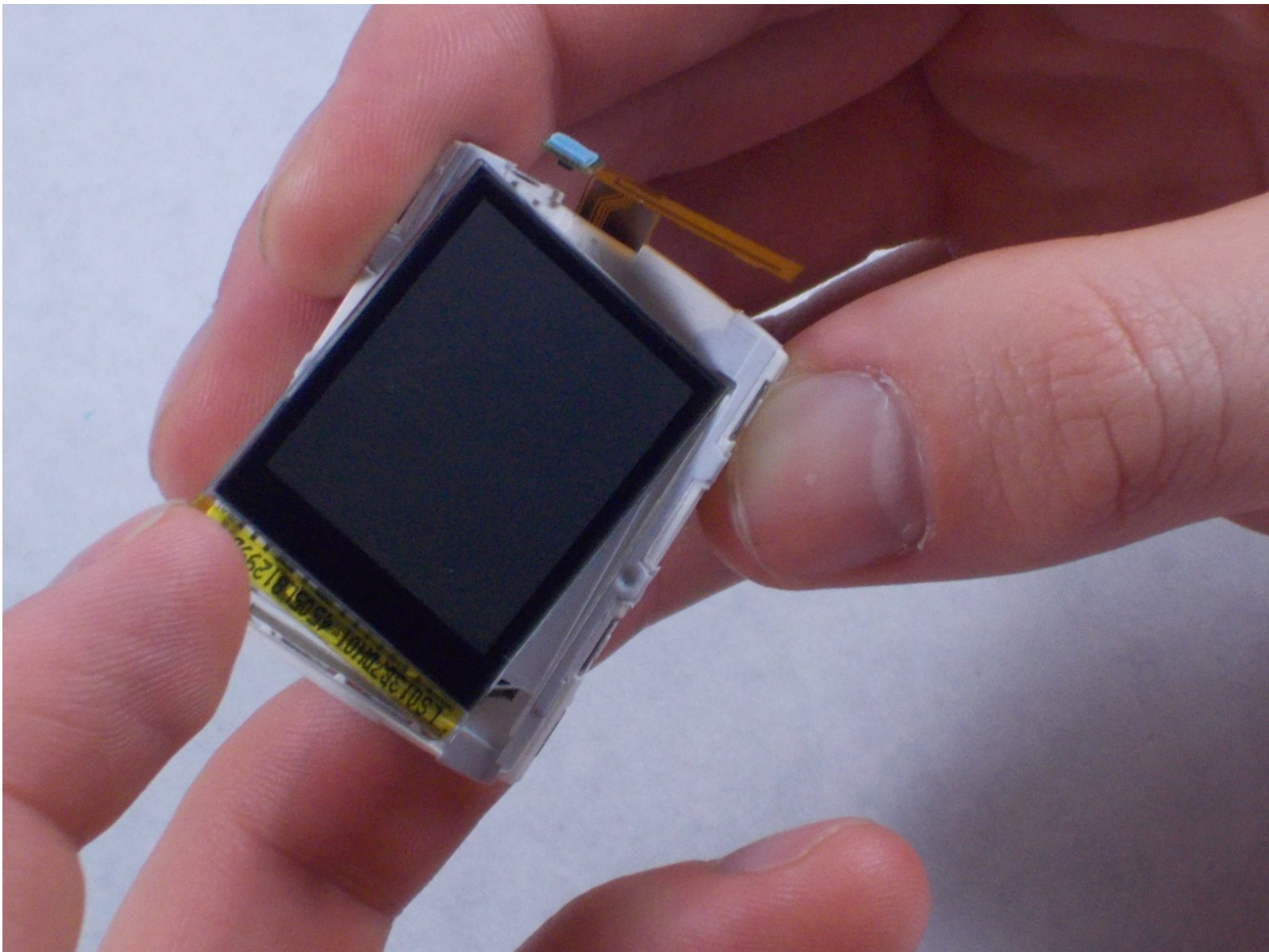




Basis Peak Screen Replacement

This guide will explain how to replace the screen of your Basis Peak.

Written By: Steph



INTRODUCTION

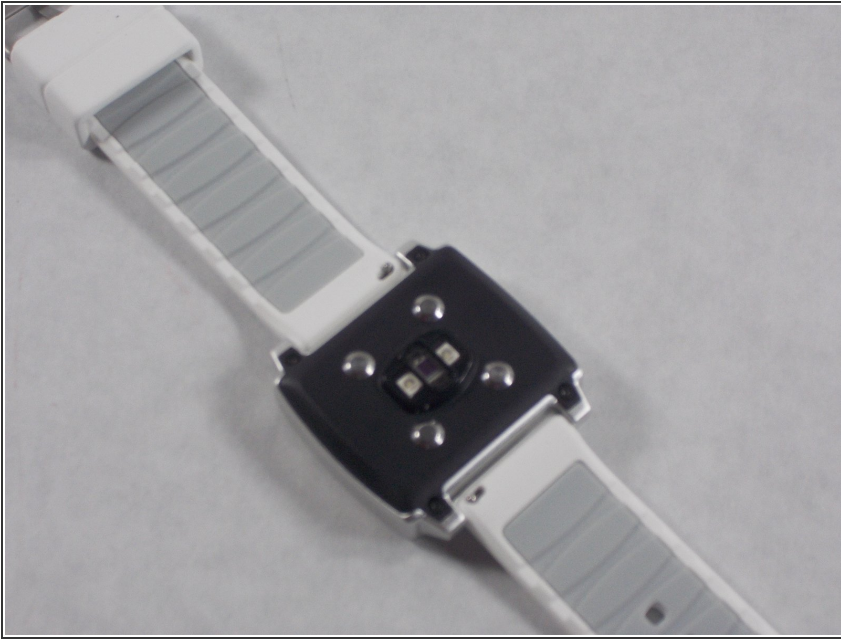
The screen on basis peak is essential to the functionality of this device. The screen displays all of the features available in the device. The screen of the Basis Peak can be replaced if there are any issues with the device's display by following this guide. The disassemble should not be a problem for there is only one way to remove the screen.



TOOLS:

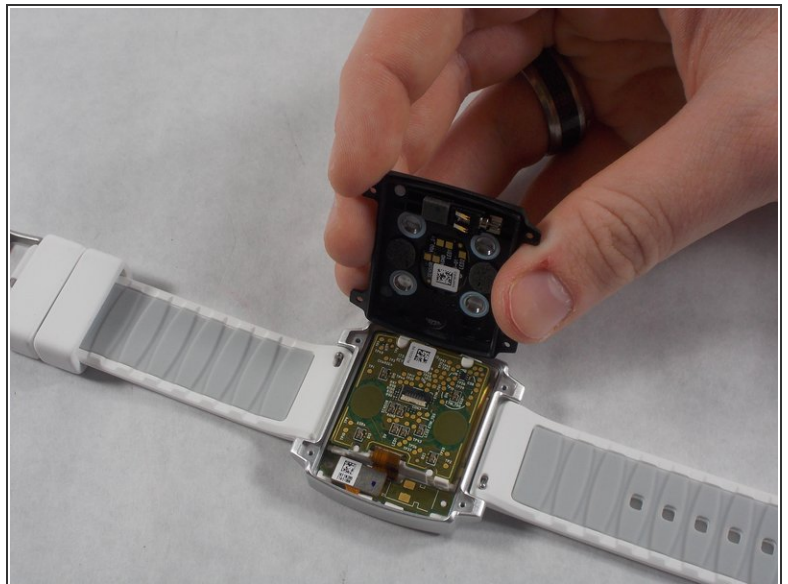
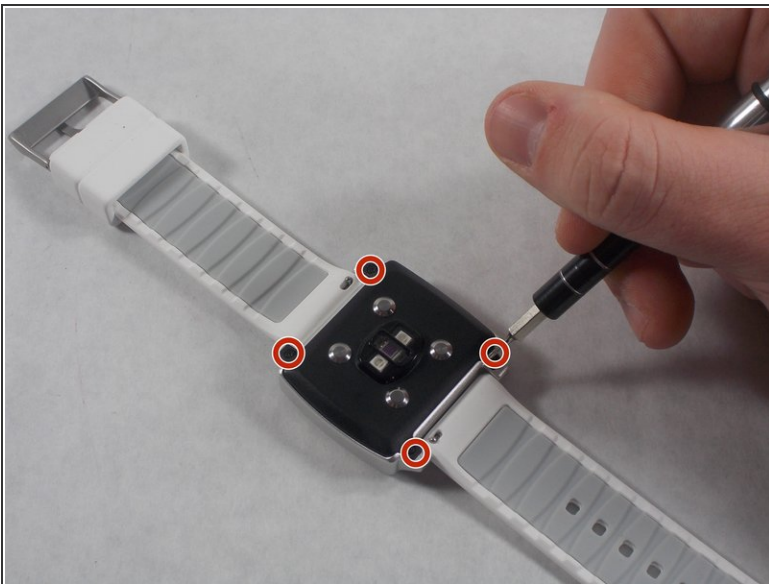
- [T2 Torx Screwdriver](#) (1)
 - [Heavy-Duty Spudger](#) (1)
-

Step 1 — Frame



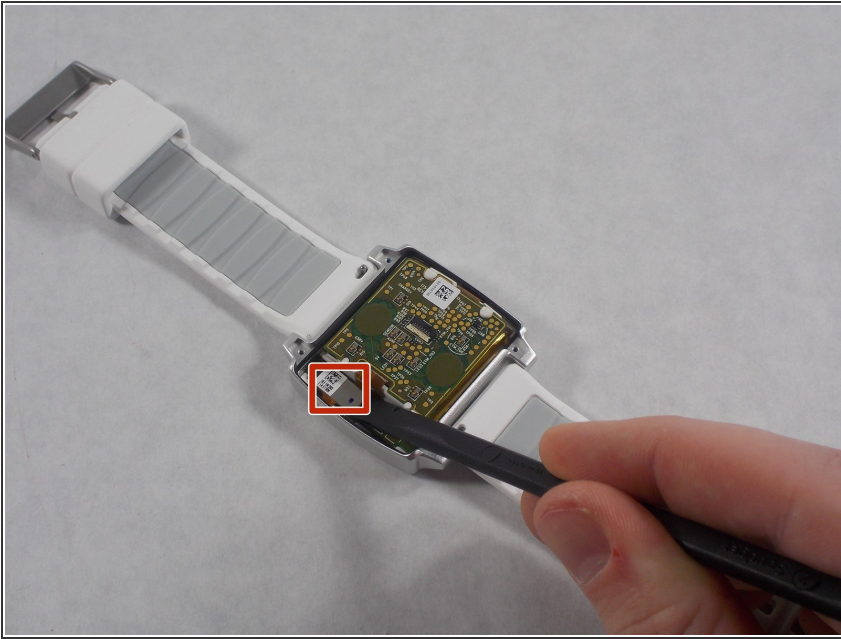
- Flip the watch over and orient it such that the buckle is away from you and the back panel is revealed.
- ⓘ Maintain this orientation to follow the guide.

Step 2



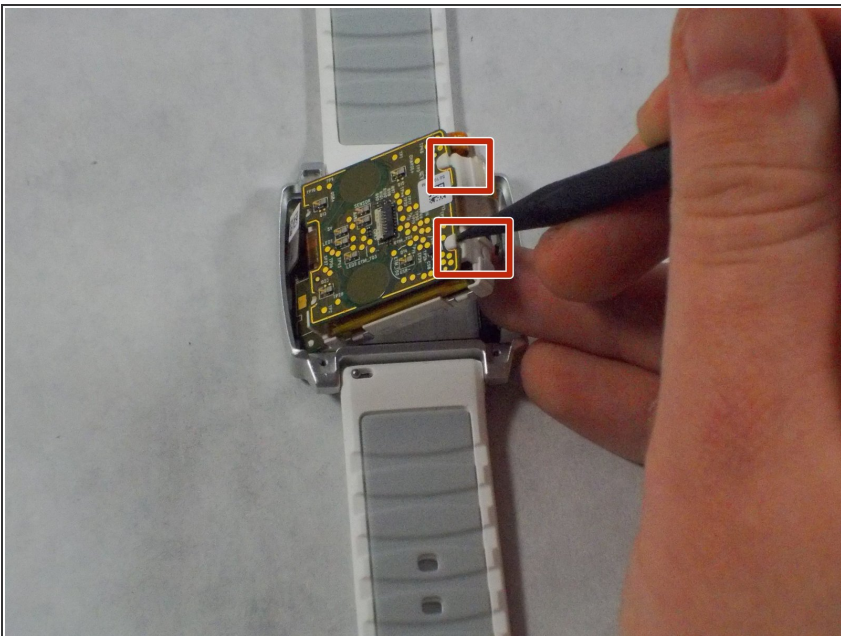
- Remove the four base screws using a size 2 TORX screwdriver to separate the back plate from the frame.

Step 3



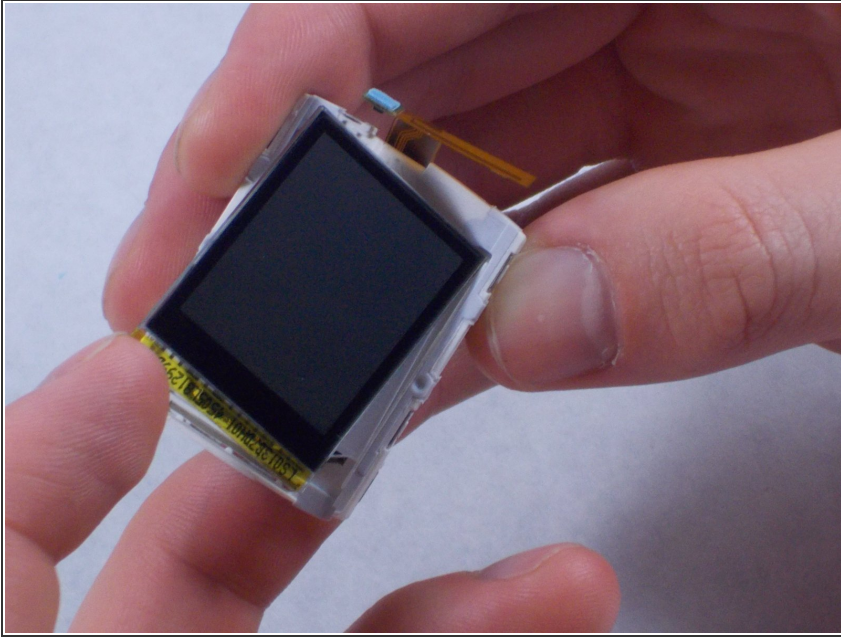
- Disconnect the ribbon cable on the left side of the motherboard by using a spudger.

Step 4



- Use a spudger and apply pressure to the white plastic wall to the right of the motherboard. Use this to lever the electronics out of the frame.
- ⓘ The clips have small lips that you can put the spudger under to get more leverage.
- ⚠ Using any of the metal to pry out the electronics may damage some of the wiring. It is crucial to only press on the plastic.

Step 5 — Screen



- Flip over the motherboard complex and gently remove the screen with your fingers.

To reassemble your device, follow these instructions in reverse order.