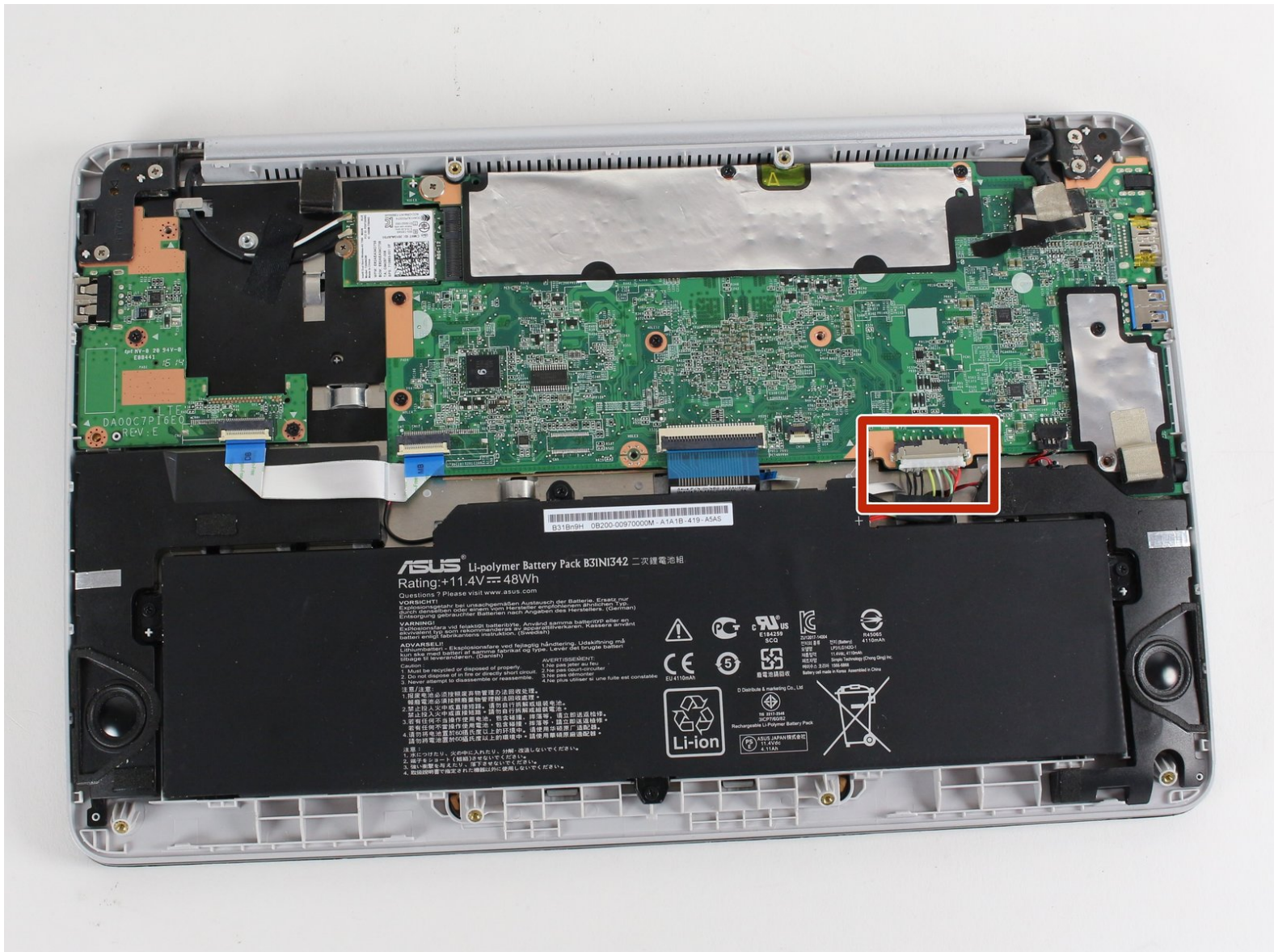




Battery Connection

Disconnect the battery of the ASUS Chromebook C200MA.

Written By: Jennifer Vang



INTRODUCTION

Use this guide to disconnect the battery of the ASUS Chromebook C200MA.

Step 1 — Battery Connection



- To disconnect the battery, pinch the multi-color bundle cable with your thumb and forefinger and pull directly back.

To reassemble your device, follow these instructions in reverse order.