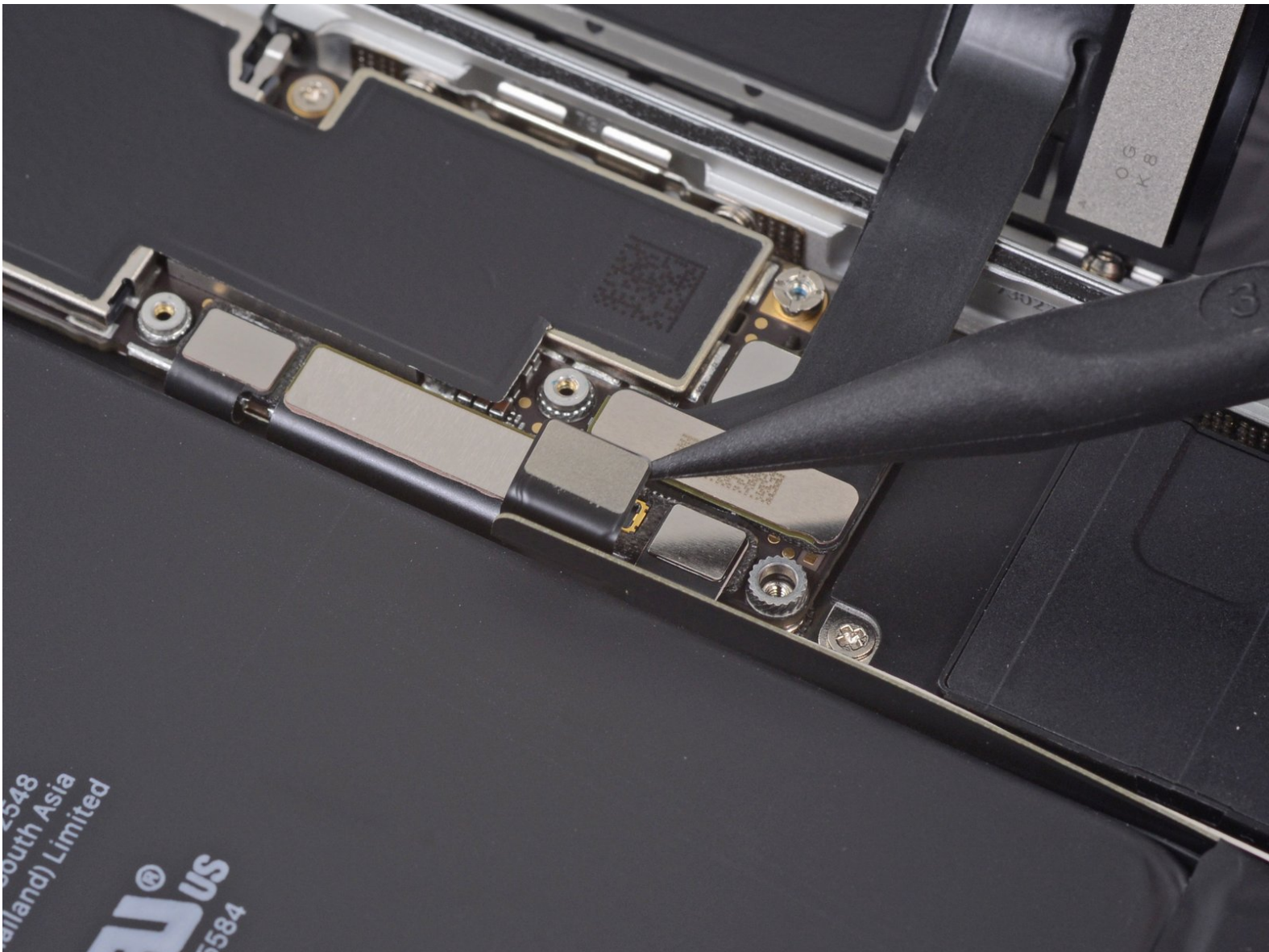




# Battery Disconnection

Prerequisite-only guide for disconnecting the iPhone 8 Plus battery in preparation for a repair.

Written By: Jeff Suovanen



---

# INTRODUCTION

Prerequisite-only guide to disconnect the battery on an iPhone 8 Plus. The battery should always be disconnected before servicing any internal components.



---

## TOOLS:

- [P2 Pentalobe Screwdriver iPhone](#) (1)
  - [iOpener](#) (1)
  - [Suction Handle](#) (1)
  - [iFixit Opening Picks set of 6](#) (1)
  - [Spudger](#) (1)
  - [Tweezers](#) (1)
  - [Phillips #000 Screwdriver](#) (1)
-

## Step 1 — Pentalobe Screws



-  Before you begin, discharge your iPhone battery below 25%. A charged lithium-ion battery can catch fire and/or explode if accidentally punctured.
- Power off your iPhone before beginning disassembly.
- Remove the two 3.5 mm pentalobe screws from the bottom edge of the iPhone.
-  Opening the iPhone's display will compromise its waterproof seals. Have [replacement seals](#) ready before you proceed past this step, or take care to avoid liquid exposure if you reassemble your iPhone without replacing the seals.

## Step 2 — Opening Procedure



- ① Heating the lower edge of the iPhone will help soften the adhesive securing the display, making it easier to open.
- Use a hairdryer or [prepare an iOpener](#) and apply it to the lower edge of the iPhone for about 90 seconds in order to soften up the adhesive underneath.

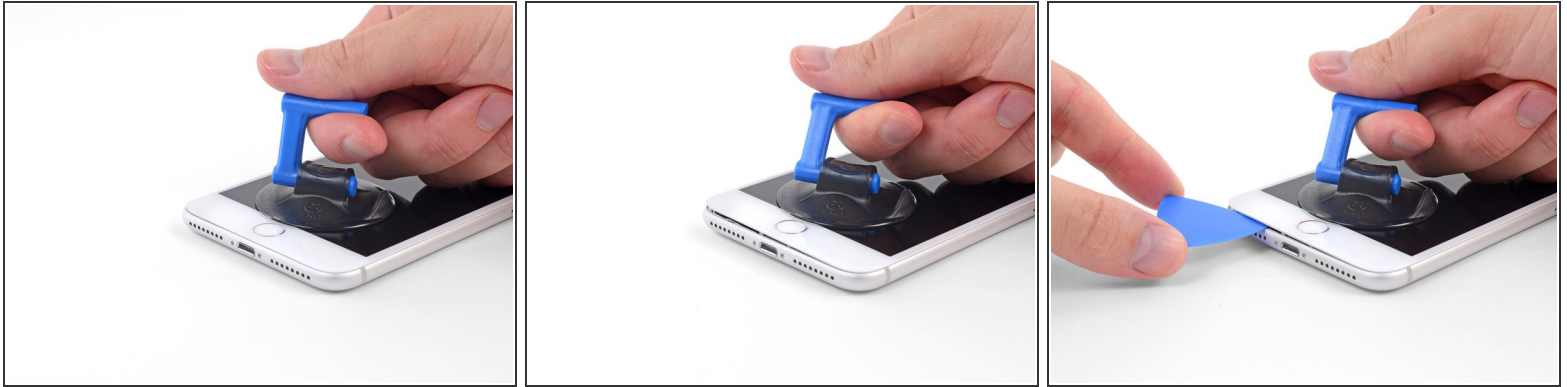
### Step 3



- Apply a suction cup to the lower half of the front panel, just above the home button.
  - ⓘ Be sure the suction cup does not overlap with the home button, as this will prevent a seal from forming between the suction cup and front glass.
  - ⓘ If your display is badly cracked, [covering it with a layer of clear packing tape](#) may allow the suction cup to adhere. Alternatively, very strong tape may be used instead of the suction cup. If all else fails, you can superglue the suction cup to the broken screen.



## Step 4



- Pull up on the suction cup with firm, constant pressure to create a slight gap between the front panel and rear case.
  - Insert an opening pick or other thin pry tool a few millimeters into the gap.
- i** The watertight adhesive holding the display in place is very strong; creating this initial gap takes a significant amount of force. If you're having a hard time opening a gap, apply more heat, and gently rock the screen up and down to weaken the adhesive until you create enough of a gap to insert your tool.

## Step 5




- Slide your pick around the corner and up the left edge of the phone, moving towards the volume control buttons and silent switch, breaking up the adhesive holding the display in place.
- Stop near the top left corner of the display.

## Step 6




- Re-insert your tool at the lower right corner of the iPhone, and slide it around the corner and up the right side of the phone to separate the adhesive.

 Don't insert the pick very far, or you may damage the display cables along this side of the iPhone. Insert it only a few millimeters, or about the width of the display bezel.

## Step 7



- Gently pull up on the suction cup to lift up the bottom edge of the display.
-  **Do not raise the display more than 15°** or you'll risk straining or tearing the ribbon cables connecting the display.

## Step 8



- Pull on the small nub on the suction cup to remove it from the front panel.

## Step 9



- Slide an opening pick underneath the display along the top edge of the phone to loosen the last of the adhesive.



## Step 10



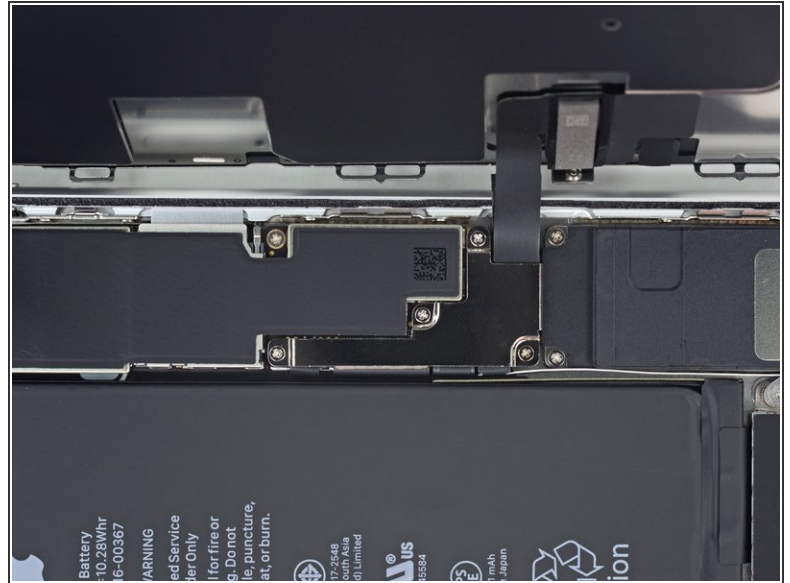
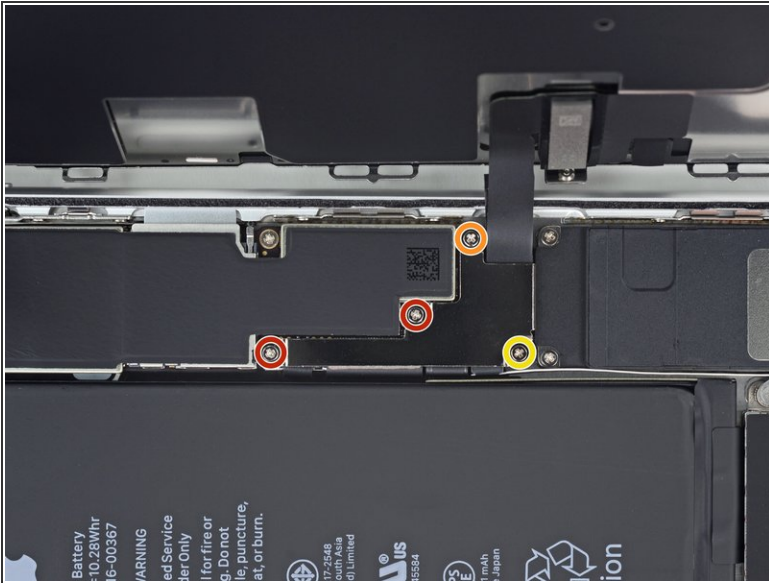
- Slide the display assembly slightly down (away from the top edge of the phone) to disengage the clips holding it to the rear case.

## Step 11



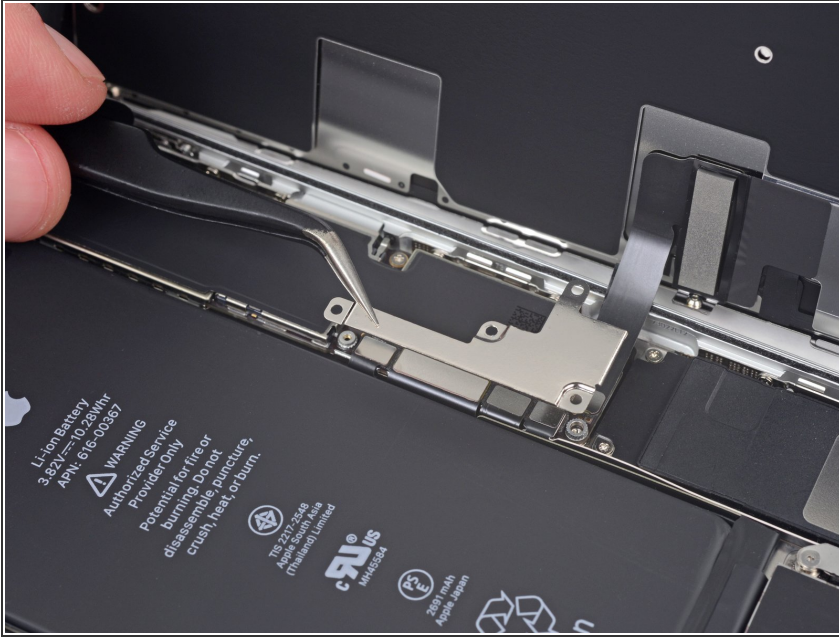
- Open the iPhone by swinging the display up from the left side, like the back cover of a book.
  - ⚠ Don't try to fully separate the display yet, as several fragile ribbon cables still connect it to the iPhone's logic board.
- Lean the display against something to keep it propped up while you're working on the phone.

## Step 12 — Battery Disconnection



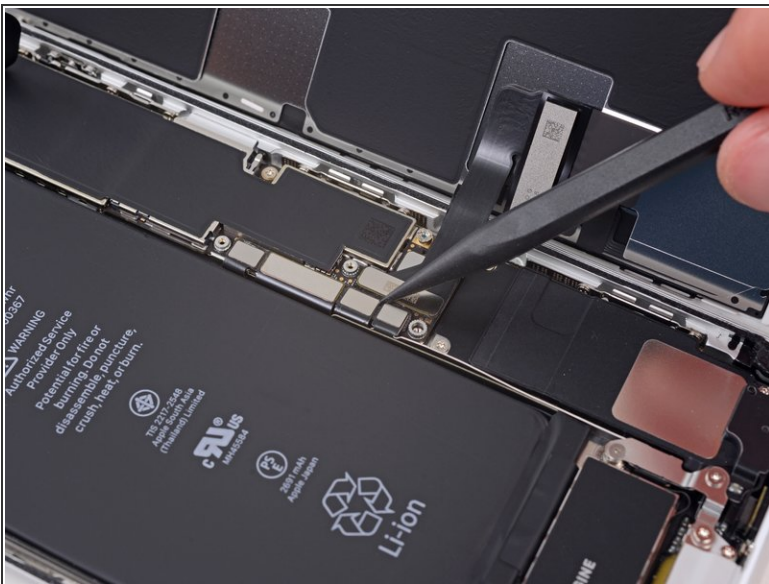
- Remove four Phillips (JIS) screws securing the lower display cable bracket to the logic board, of the following lengths:
    - Two 1.3 mm screws
    - One 1.4 mm screw
    - One 2.7 mm screw
- ☑ Throughout this guide, [keep careful track of your screws](#) so that each one goes back where it came from during reassembly. Installing a screw in the wrong place can cause permanent damage.

## Step 13



- Remove the lower display cable bracket.

## Step 14



- Use the point of a spudger to pry the battery connector up from its socket on the logic board.
- Bend the connector cable up slightly to prevent it from accidentally making contact with the socket and providing power to the phone during your repair.

To reassemble your device, follow these instructions in reverse order.