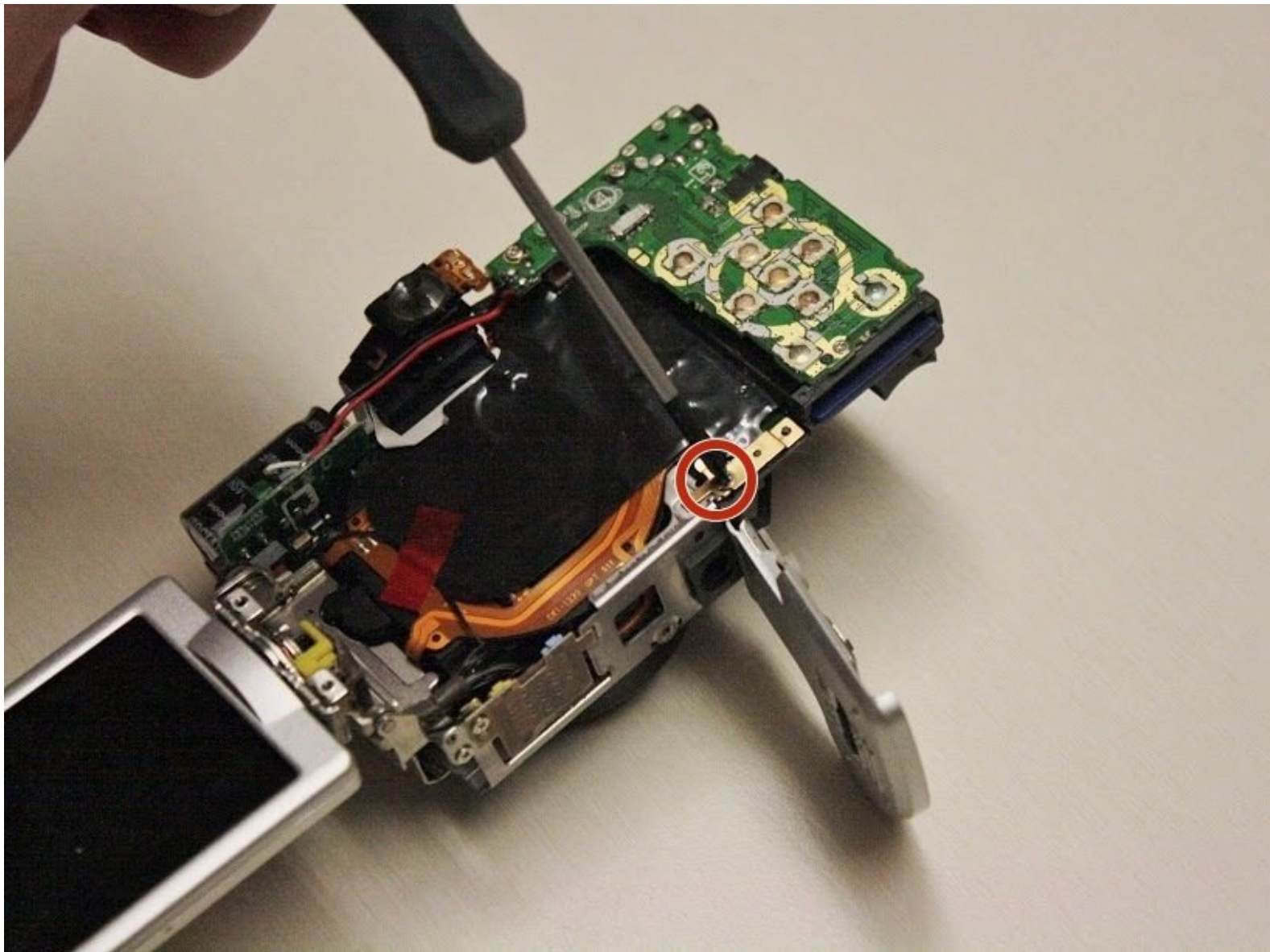




# Battery Door Replacement

If your battery door will not close or remain closed it may need to be replaced. This guide will show you how to replace your camera battery door.

Written By: Alicia Burns





## TOOLS:

- [Phillips #00 Screwdriver](#) (1)
- [Tweezers](#) (1)
- [Spudger](#) (1)

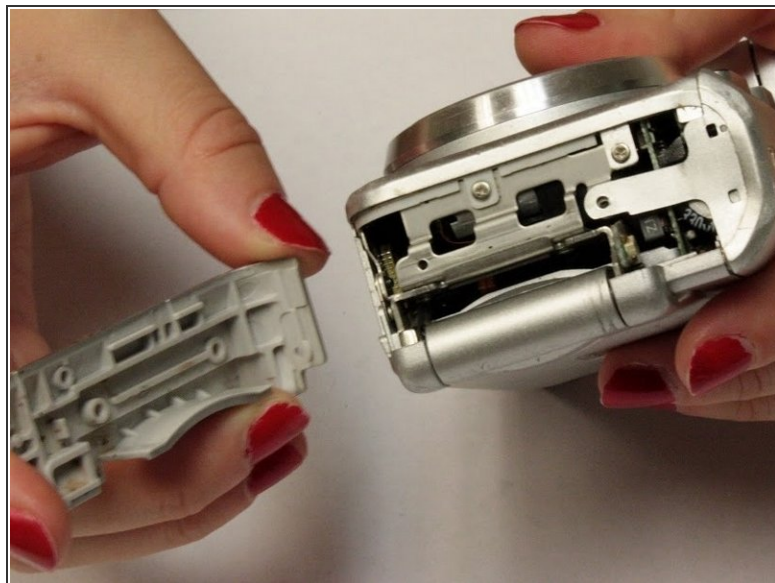
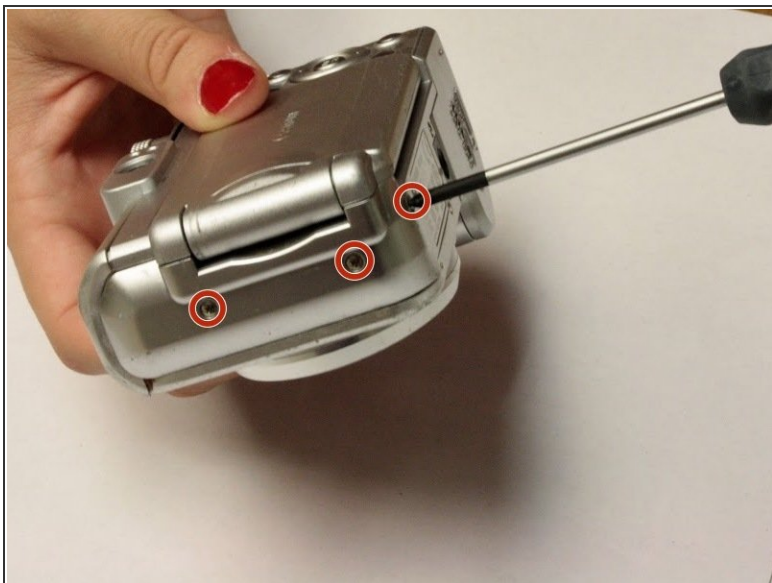
## Step 1 — Front Panel



- Open the battery door by sliding the tab on the battery door while pushing the battery door away from the camera.
- Remove batteries.

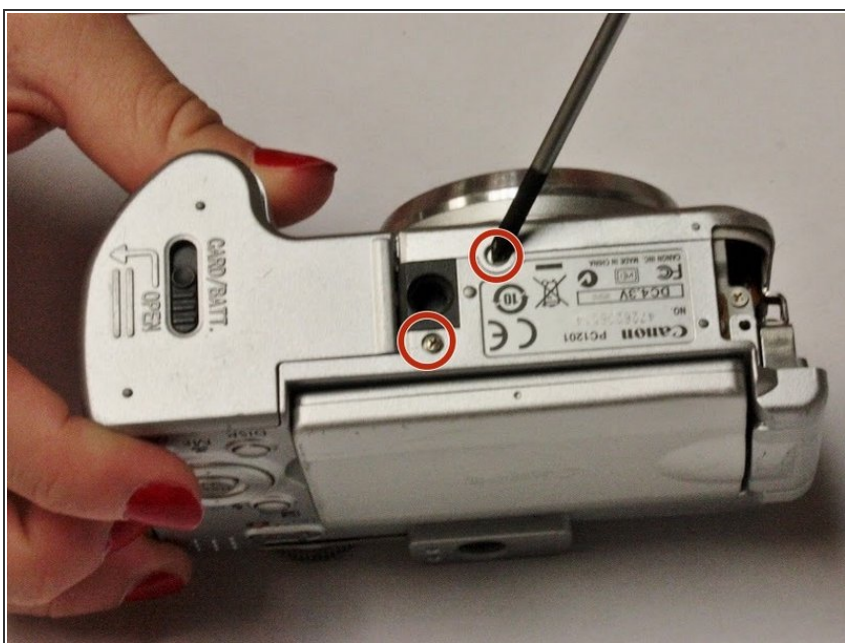


## Step 2



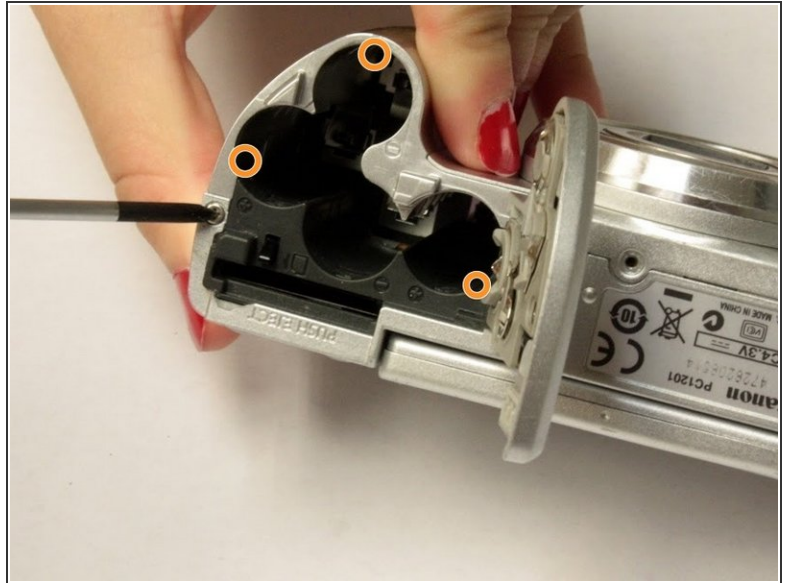
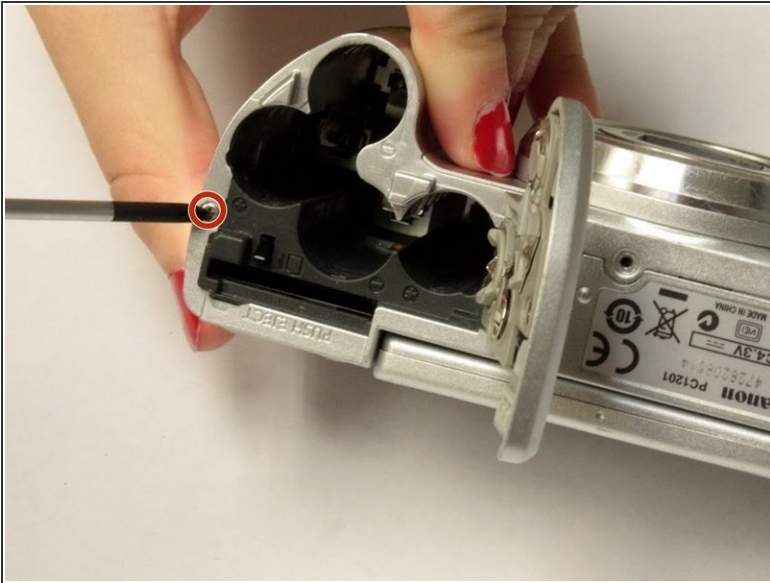
- Remove the three indicated .2mm screws using a Phillips #00 screwdriver.
- Gently pull off side-panel to remove it.

## Step 3



- Remove the two indicated .2mm screws using a Phillips #00 screwdriver.

## Step 4



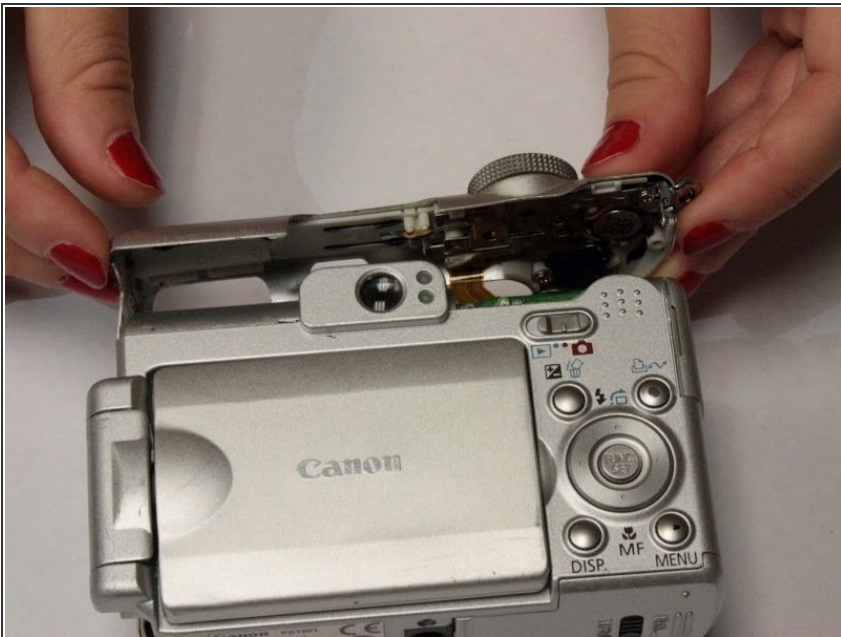
- Remove the indicated .2mm screw using a Phillips #00 screwdriver.
- Remove the three .2mm screws located on the internal side of the top panel within the battery chamber using a Phillips #00 screwdriver.

## Step 5



- Open 'DIGITAL A/V OUT' door on camera.
- Remove the two indicated .2mm screws using a Phillips #00 screwdriver.

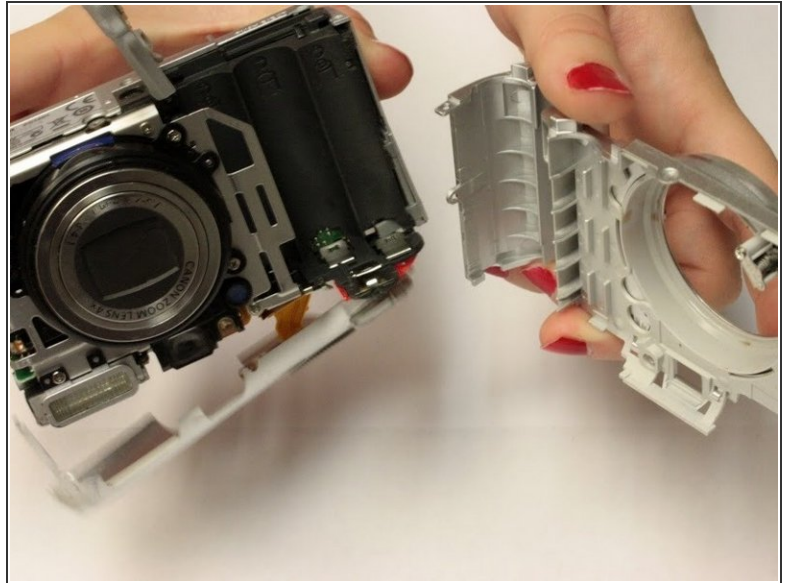
## Step 6



- Grip the sides of the top panel and gently pull to separate the top panel from the camera body.
- ⓘ The top panel will not completely detach.

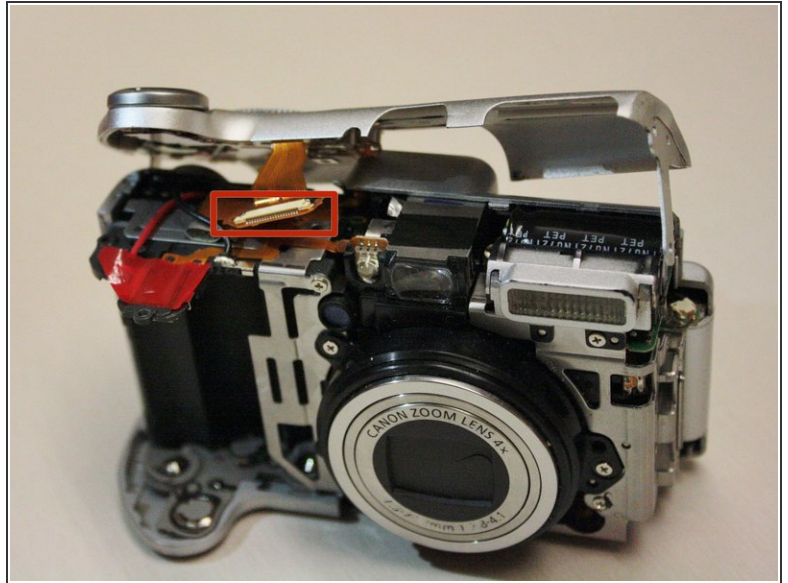
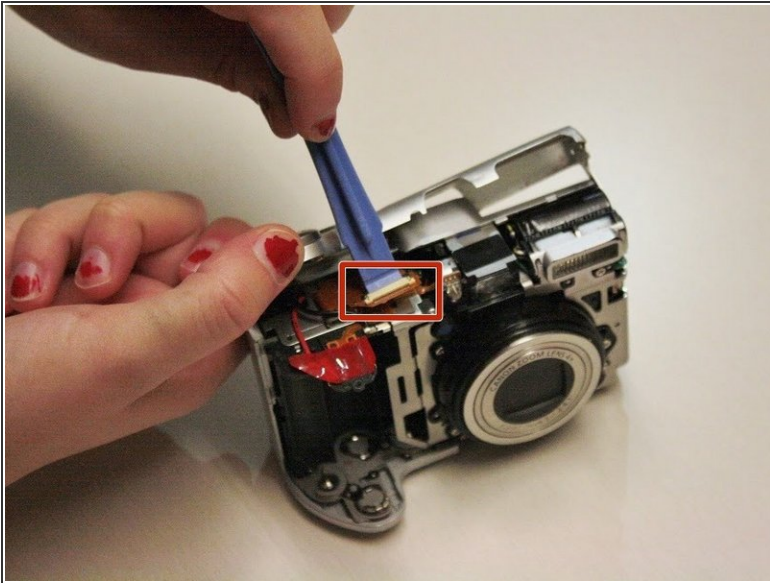


## Step 7



- Gently pull the front and back panels apart, and use a Phillips #00 screwdriver to remove the screw connecting the panels.
- Gripping the top and bottom, gently pull the front panel away from the camera body to remove it.

## Step 8 — Back Panel



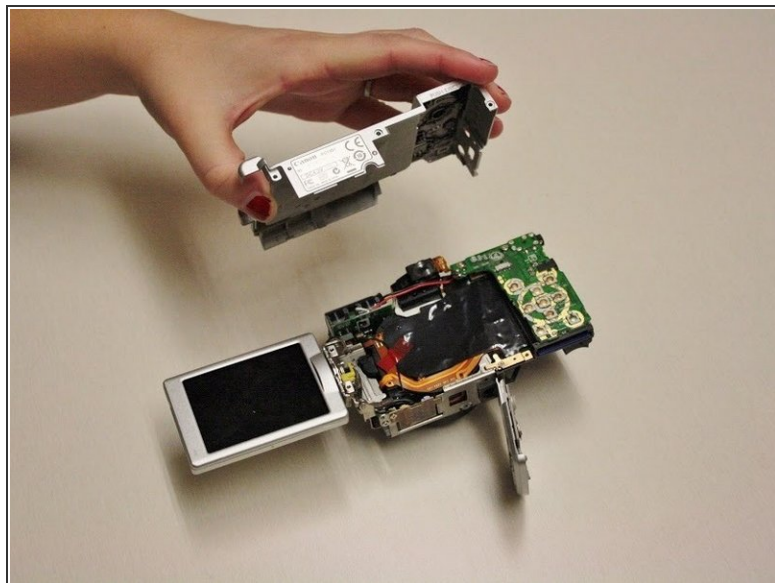
- Use the spudger to gently pull back the retaining clip and pull the ribbon out.

- The top panel should now be completely detached from the camera.

⚠ Applying too much force to the spudger may damage the retaining clip.

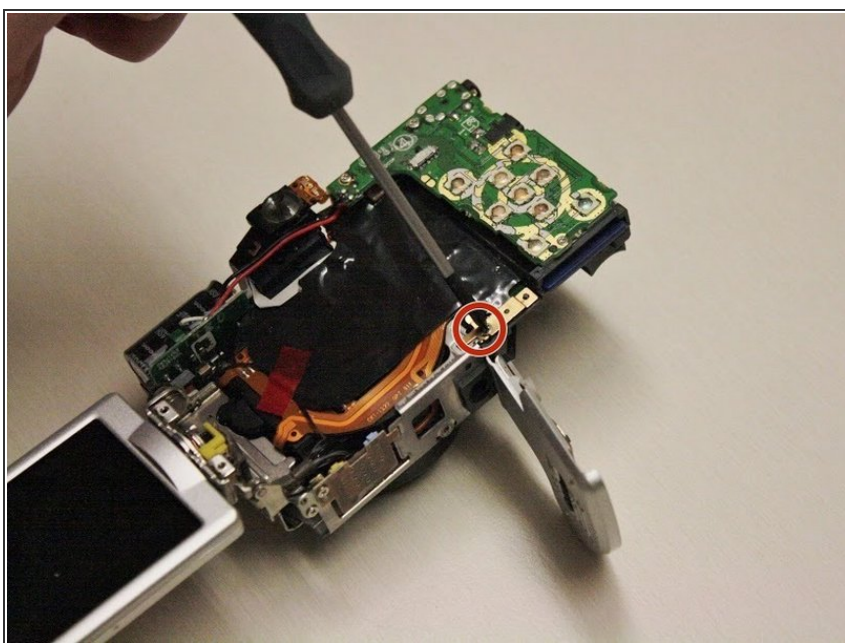


## Step 9



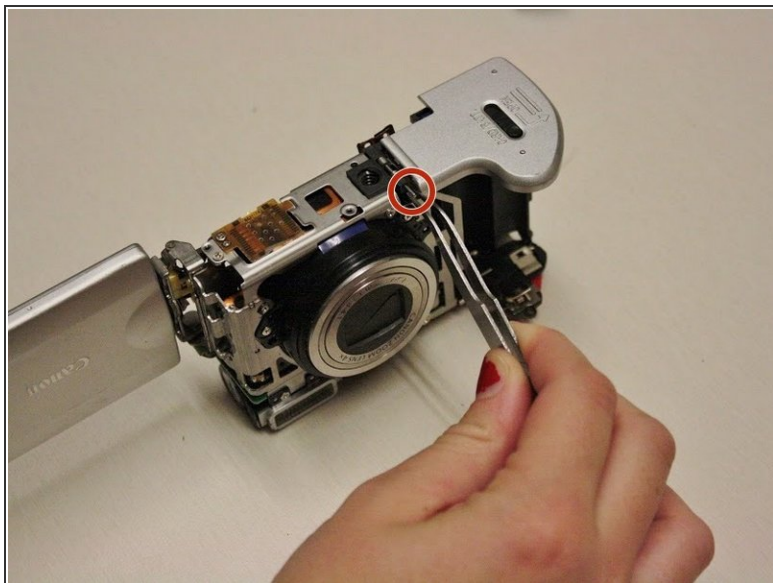
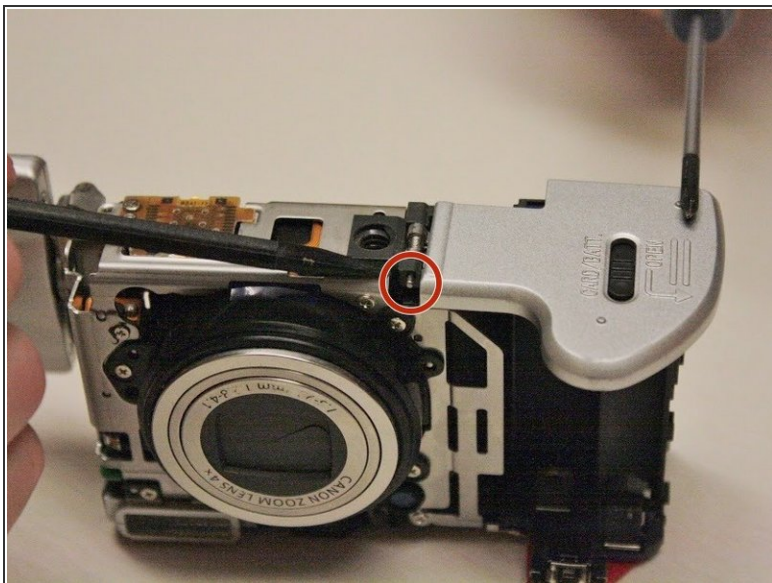
- Remove .2 mm screw using a #00 Philips screwdriver.
- Gently pry off back panel to remove it.

## Step 10 — Battery Door



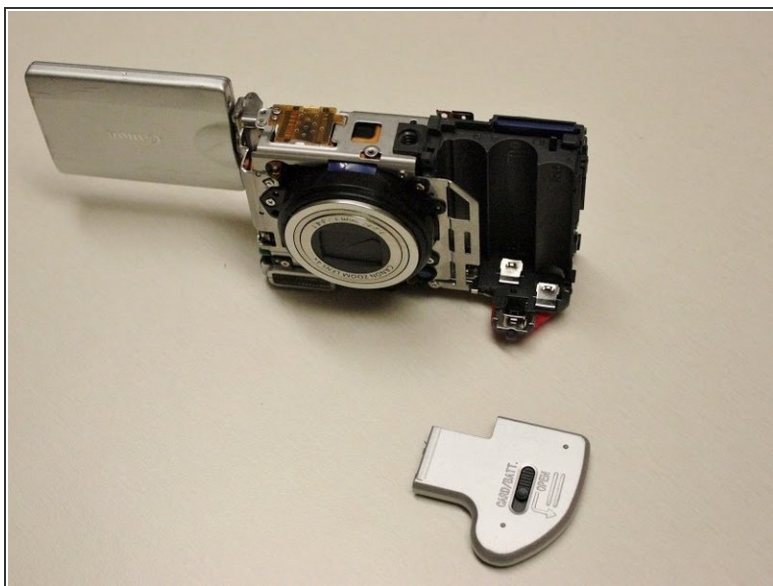
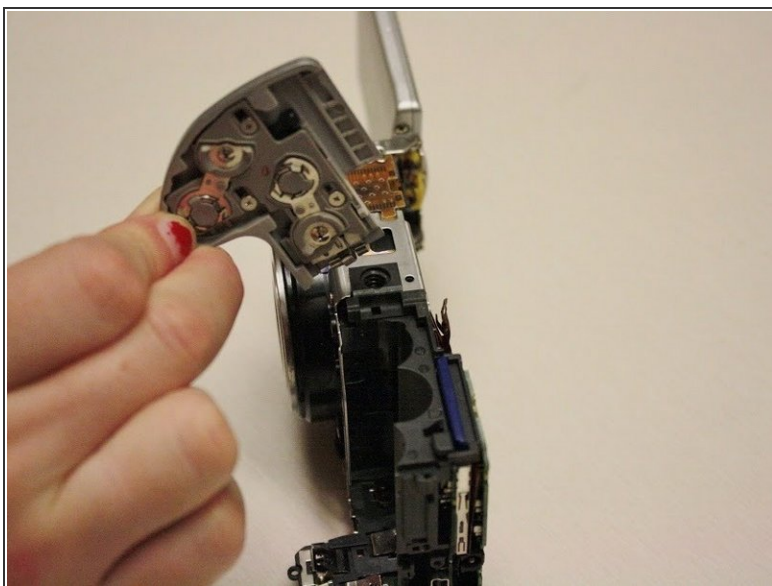
- Remove .2 mm screw using a #00 Philips screwdriver.

## Step 11



- Using tweezers, gently pull remove the small rod in the battery door hinge.

## Step 12



- Gently pull up on the battery door to remove it.

To reassemble your device, follow these instructions in reverse order.