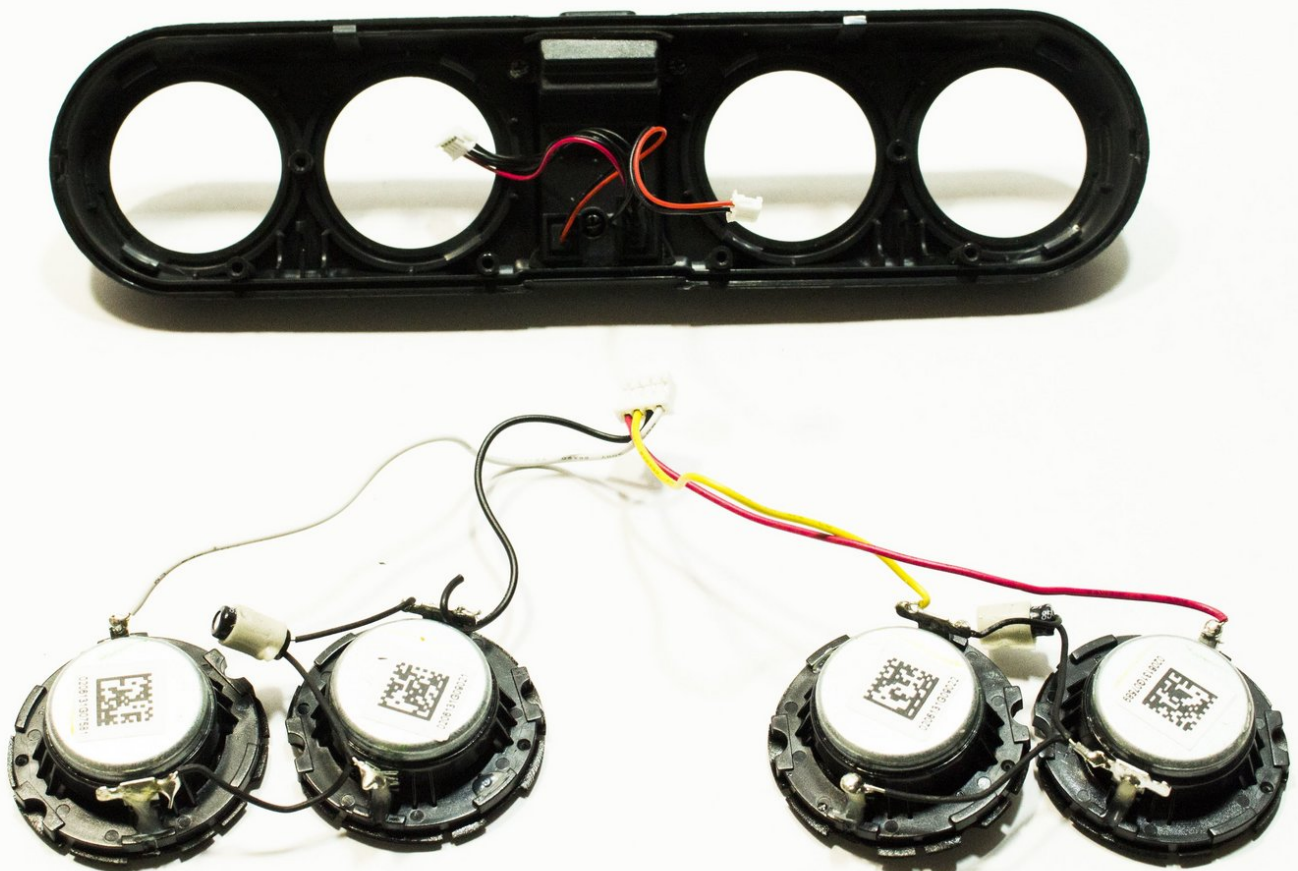




Beats Pill 1.0 Speaker Replacement

This guide will discuss the steps on how to replace the speakers on the Beats Pill 1.0.

Written By: Dylan Cooper Dalrymple



INTRODUCTION

This guide will serve as a reference on how to replace the speakers on the Beats Pill 1.0. In order to follow this guide, you will need to have the Beats Pill partially disassembled. We would recommend going through our [general disassembly guide](#) for guidance on how to disassemble the Pill. For this guide, we will assume that you have fully disassembled the product according to our general disassembly guide.



TOOLS:

- [Phillips #0 Screwdriver](#) (1)
 - [Phillips #00 Screwdriver](#) (1)
 - [Spudger](#) (1)
-

Step 1 — Removing the Case Screws



- Using the spudger, create space between the speaker covers and then remove.
- On the underside of the device, remove the rubber stand with the BeatsPill logo on it.
- Using a Philips #0 Screwdriver that is ESD-safe. Remove the four screws that were underneath the rubber stand.

Step 2 — Removing Center Cover



- Remove the two Philips #0 screws with the ESD-safe screwdriver.
- Slowly remove the center band and 2 clip rings until the adhesive separates as to prevent damage.

Step 3 — Separate the Device



- Using the spudger, starting in the middle, pry the device apart along it's seam as circled in pink.
- Open the device to separate the two main bodies of the device. The device should look as picture above.

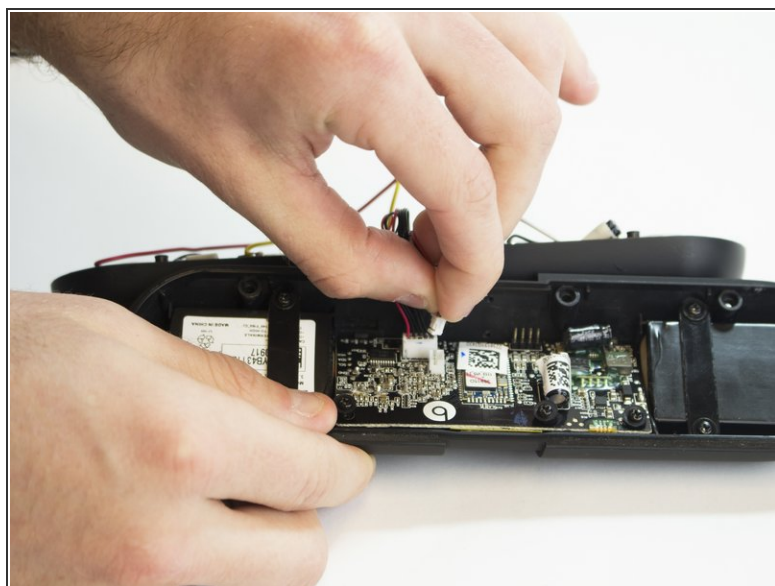
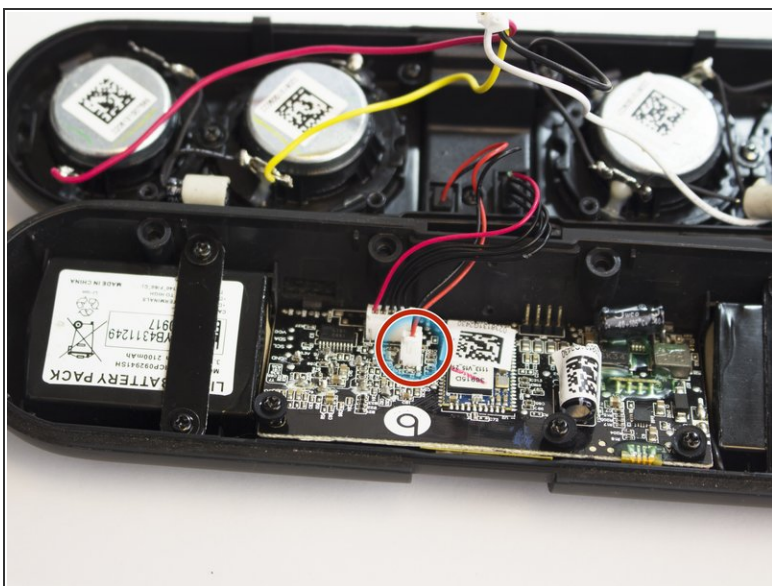
Step 4 — Disconnect Speaker Wiring



- Remove the speaker wire(yellow, red, black, white) from the mother board.

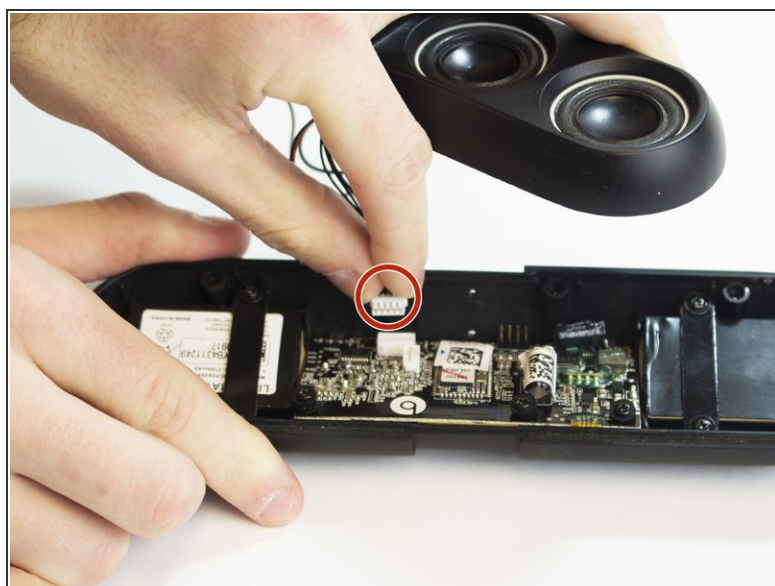
⚠ Ground yourself when touching the motherboard

Step 5 — Disconnect NFC Sensor Wiring



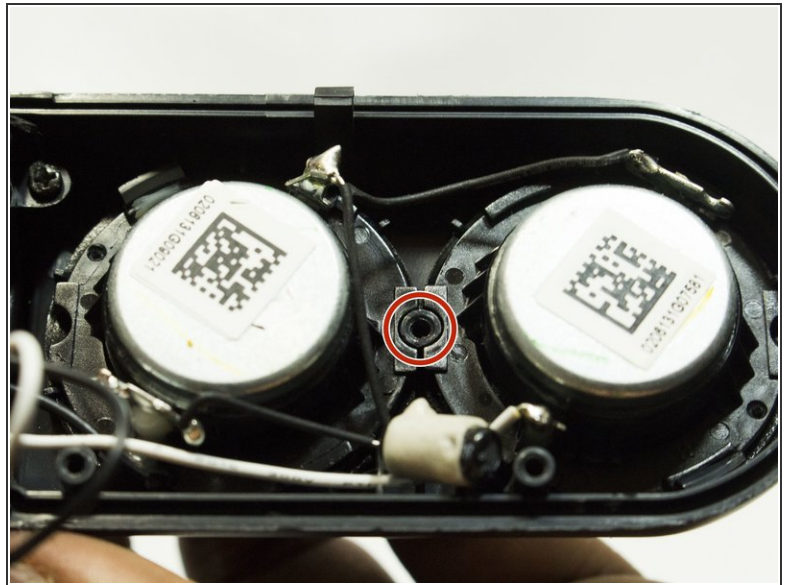
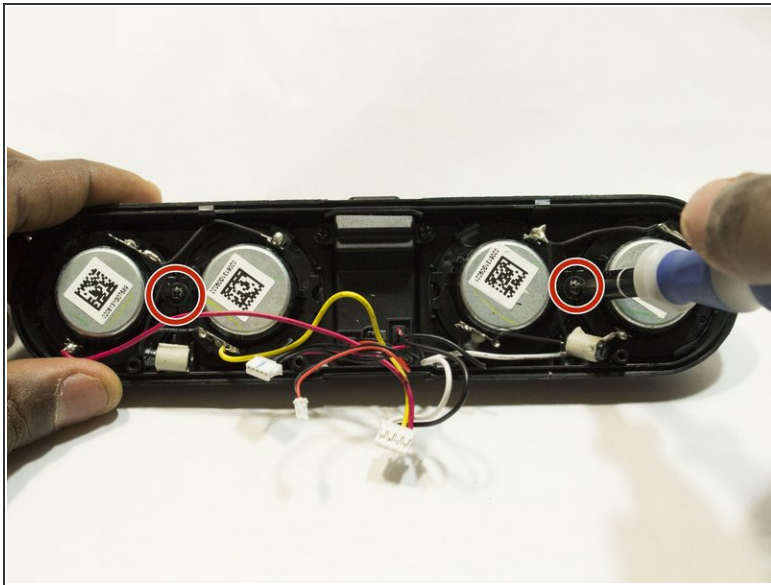
- Carefully remove the NFC sensor wire (black, red)

Step 6 — Disconnect Control Wiring



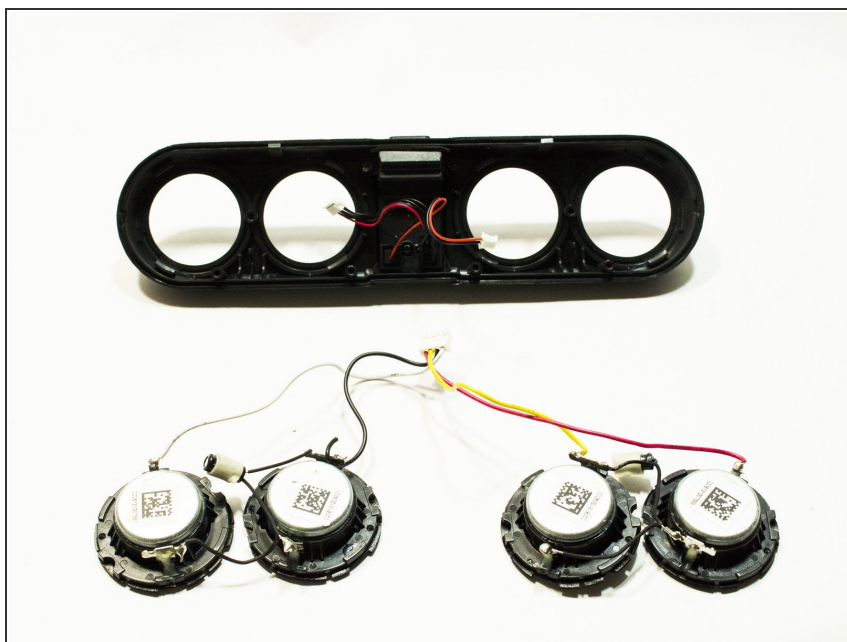
- Carefully remove the control cable(4 black, 1 red)

Step 7 — Speaker



- Using the PH0 Phillips Screwdriver, unscrew the two screws holding the speakers down.

Step 8



- Each speaker is held down by two clips. On the front face of the speaker, push the speaker outward while pushing one of the clips that holds it down to the side. The speaker should pop out

To reassemble your device, follow these instructions in reverse order.