



Beats Studio 2.0 Wireless Left Interior Side Panel Replacement

This guide will assist in replacing broken or damaged left side interior side panels of Beats By Dre Studio 2.0 Wireless Headphones.

Written By: Antares Cam



INTRODUCTION

The casing and structure of Beats by Dre Studio 2.0 over-ear headphones directly influence their sound quality. When the interior side panel is compromised, a proper seal (to one's ears) is not achievable, and ultimately sound quality is severely lessened. This guide will provide thorough instructions on how to replace the interior side paneling and restore optimal sound quality.



TOOLS:

- [Metal Spudger](#) (1)
- [Phillips #0 Screwdriver](#) (1)



PARTS:

- [Beats Studio 2.0 Wireless Left Interior Side panel](#) (1)

Step 1 — Left Interior Side Panel



- Use metal spudger to pry away ear cushion.

Step 2



- Remove ear cushion from headphones (attached by adhesive).

Step 3



- Remove two screws from the metal hinge using a Phillips head screwdriver to allow more motion from the speaker housing and more accessibility.

Step 4




- Remove five screws using a Phillips head screwdriver from speaker housing.

Step 5



- Pull speaker away to access second secondary housing.

 Be careful not to stress wires and break solder points.

Step 6



- Raise center cover.
- Remove screw from center of housing.

Step 7



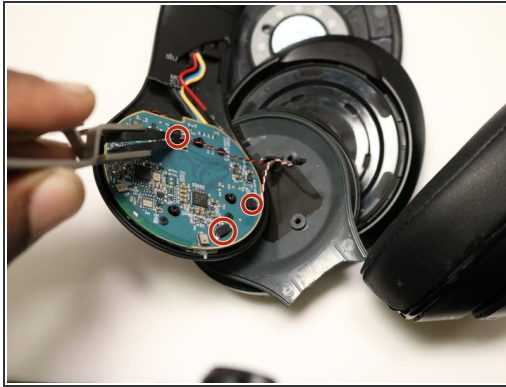
- Pull secondary housing away gently being careful not to damage the wires.

Step 8



- Remove four screws using a Phillips head screwdriver to remove the third housing.

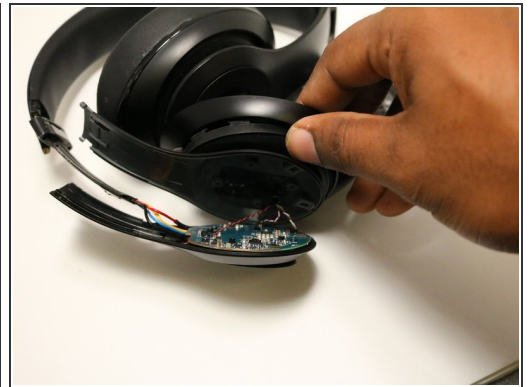
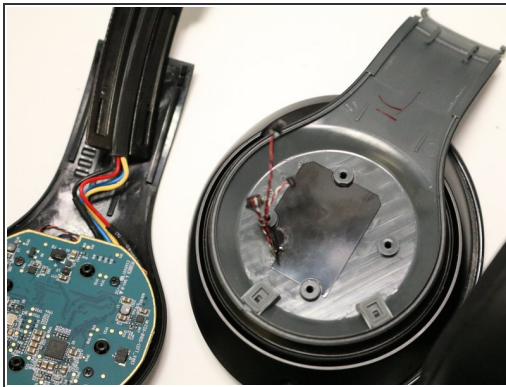
Step 9



- Disconnect wires gently.

⚠ Be gentle with the wires ensuring to pull them through with care to eliminate possible shortages.

Step 10



- Pass wire through new housing and reconnect wires.

Step 11



- Snap housing into place.

To reassemble your device, follow these instructions in reverse order.