



Beboncool Wireless Switch Pro Controller

Back Plate Replacement

A guide that will show how to replace the Beboncool Wireless Switch Pro Controller back plate.

Written By: Jackson Boisvert



INTRODUCTION

This guide will show you how to access the insides of your Beboncool Pro Switch Controller by removing the back plate.



TOOLS:

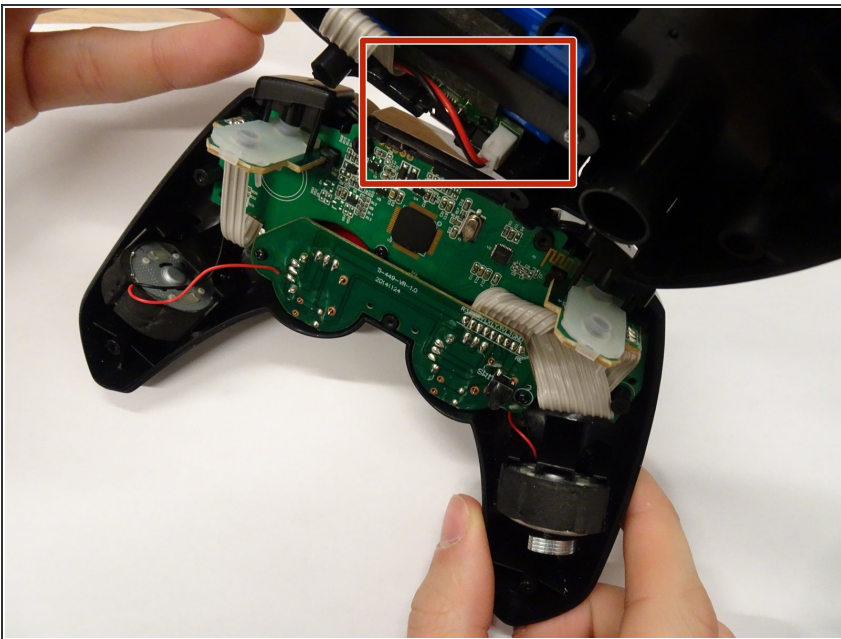
- [Phillips #0 Screwdriver](#) (1)
 - [iFixit Opening Tools](#) (1)
-

Step 1 — Back Plate



- Place the controller down with the back facing up.
- Remove the seven Phillips #00 screws from the back plate.

Step 2



- Separate the back plate from the rest of the controller using an opening tool.
- Detach the cable connecting the back plate to the rest of the controller.

To reassemble your device, follow these instructions in reverse order.